

# Customer Information Sheet

DRAWING No.: M30-110XX00

SHEET 2 OF 2

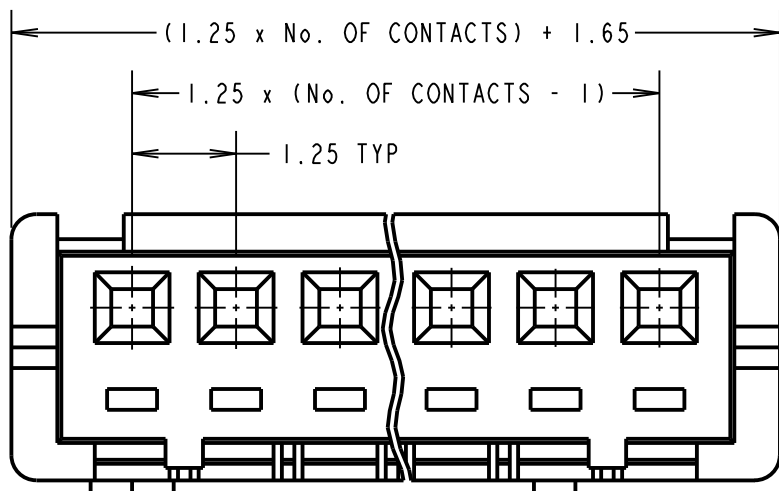
IF IN DOUBT - ASK

©

NOT TO SCALE

THIRD ANGLE PROJECTION

ALL DIMENSIONS IN mm



## SPECIFICATIONS:

### MATERIAL:

MOULDING = NYLON 66 NATURAL, UL94V-0

### ELECTRICAL:

CURRENT RATING = 1A AC/DC

VOLTAGE RATING = 150V AC/DC

CONTACT RESISTANCE = 30mΩ MAX

INSULATION RESISTANCE = 500MΩ MIN

DIELECTRIC WITHSTANDING VOLTAGE = 500V AC FOR ONE MINUTE

### ENVIRONMENTAL:

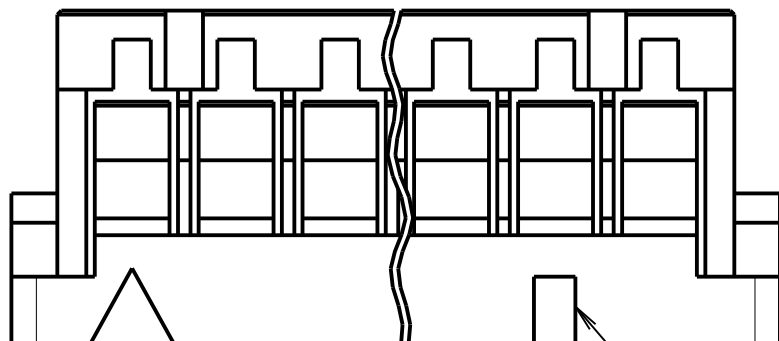
TEMPERATURE RANGE = -25° TO +85°C

PACKING: BAG

FOR COMPLETE SPECIFICATION, SEE COMPONENT SPECIFICATION C025XX (LATEST ISSUE)

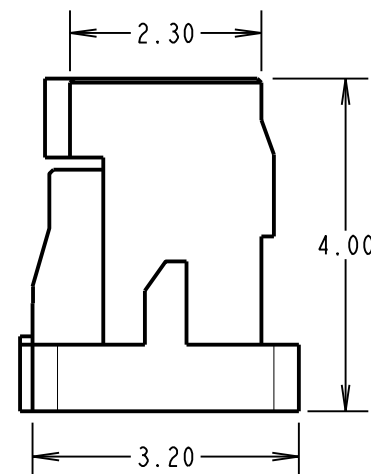
## NOTES:

1. TO BE USED IN CONJUNCTION WITH M30-1050046 OR M30-1060046 CRIMP CONTACTS. THE SPECIFICATIONS LISTED ARE APPROPRIATE WHEN USED WITH THESE CONTACTS.
2. MATES WITH M30-600X46 AND M30-610X46 PIN HEADERS.
3. ALL TOLERANCES ±0.25 UNLESS OTHERWISE STATED.



No. 1 POSITION

THIS FEATURE IS ON 05, 10 AND 15 SIZES ONLY.



ORDER CODE:

**M30-110XX00**

No. OF CONTACTS  
02 TO 15

SB	9	01.07.13	12134
NAME	ISS.	DATE	C/NOTE
APPROVED:		S. BENNETT	
CHECKED:		M. PLESTED	
DRAWN:		D. BECK	
CUSTOMER REF.:			
ASSEMBLY DRG:			

# HARWIN

www.harwin.com  
technical@harwin.com

THIS DRAWING AND ANY INFORMATION OR DESCRIPTIVE MATTER SET OUT HEREON ARE CONFIDENTIAL AND COPYRIGHT PROPERTY OF THE HARWIN GROUP AND MUST NOT BE DISCLOSED, LOANED, COPIED OR USED FOR MANUFACTURING, TENDERING OR FOR ANY OTHER PURPOSE WITHOUT THEIR WRITTEN PERMISSION.

## TOLERANCES

X = ±1mm  
X.X = ±0.25mm  
X.XX = ±0.10mm  
X.XXX = ±0.01mm  
ANGLES = ±5°  
UNLESS STATED

## MATERIAL:

NYLON 66 UL94V-0  
NATURAL

FINISH: CLEAN

S/AREA:

mm<sup>2</sup>

## TITLE:

1.25mm PITCH SIL  
CRIMP MOULDING

DRAWING NUMBER:

**M30-110XX00**

SHT  
2  
OF  
2

# Mouser Electronics

Authorized Distributor

Click to View Pricing, Inventory, Delivery & Lifecycle Information:

[Harwin:](#)

[M30-1100500](#) [M30-1100200](#) [M30-1100400](#) [M30-1100600](#) [M30-1100800](#) [M30-1100300](#) [M30-1101500](#) [M30-1100900](#) [M30-1101400](#) [M30-1101300](#) [M30-1101100](#) [M30-1101200](#) [M30-1101000](#) [M30-1100700](#)