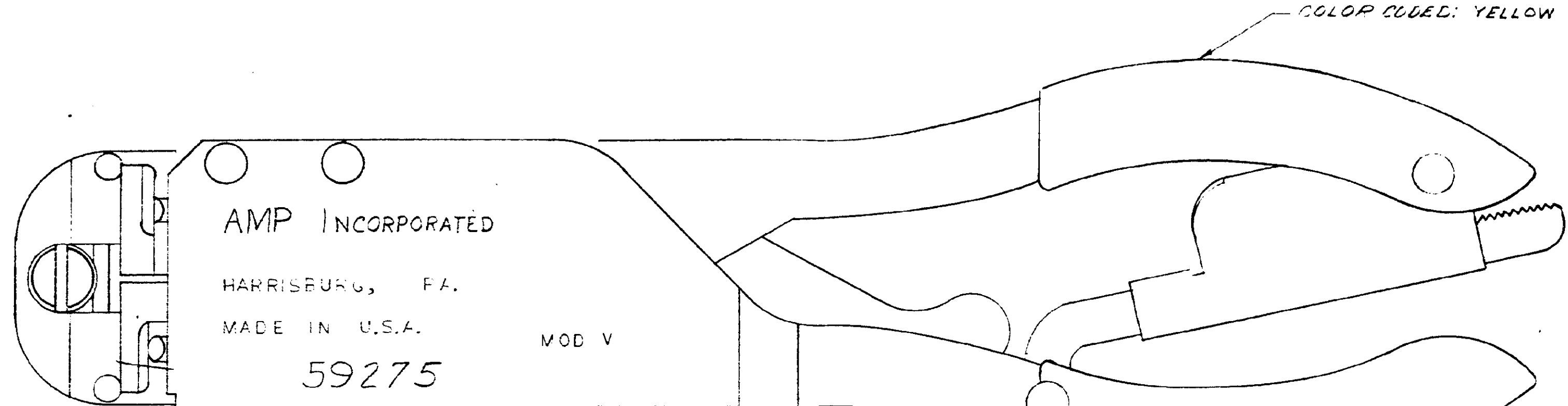
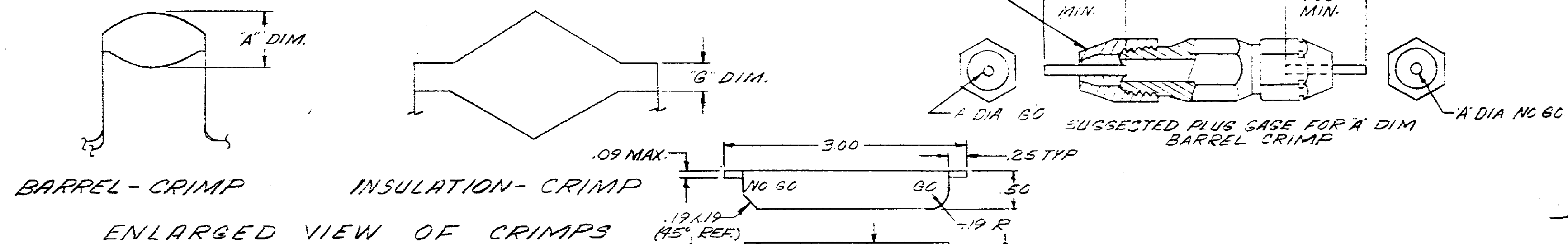


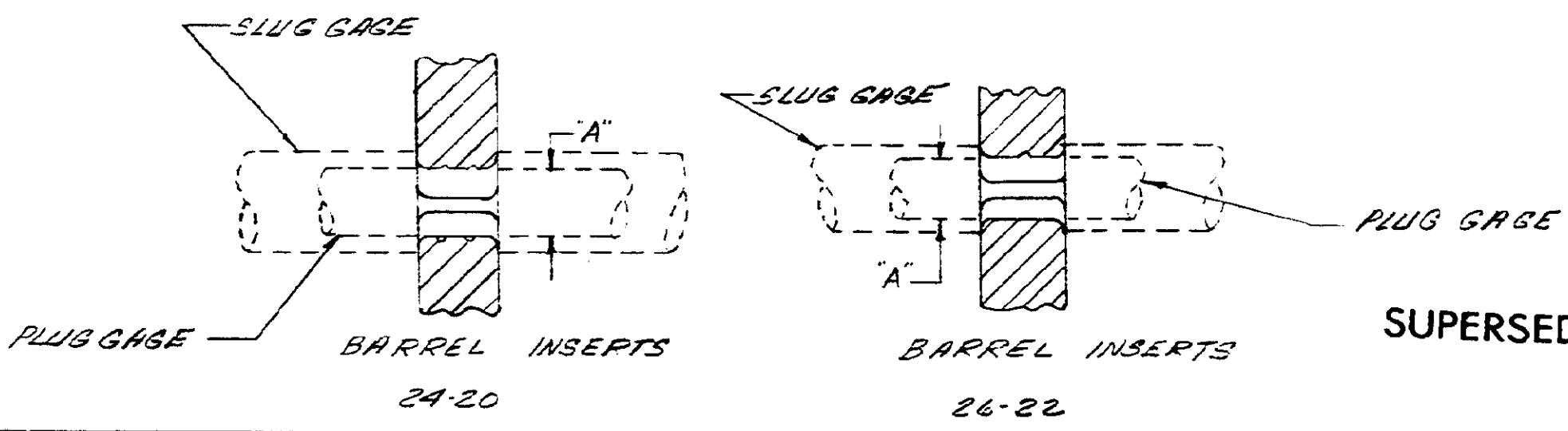
NUMBER 59275



NOTE:  
 1. WHEN PLUG OR SLUG GAGING OF BARREL CRIMP IT IS IMPORTANT TO NOTE THAT DIMENSION "A" IS THE FIGURE REQUIRED  
 PLUG GAGE DIMENSIONS APPLY WHEN TOOL IS BOTTOMED BUT NOT UNDER PRESSURE.



WIRE SIZE	"A" DIA. BARREL CRIMP		"G" DIM. INSUL. CRIMP	
	GO	NO GO	GO AT POS #1	NO GO AT POS #2
26-22	.063	.069	.025	.075
24-20	.089	.095	.035	.085



SUPERSEDED BY I.S. 1610

DIMENSIONS IN INCHES DO NOT SCALE PRINT

REV	DESCRIPTION	DATE
VI	SUB BY I.S. 1610	12-31-62
V	REVISED	12-31-62
LTR	REVISION RECORD	ECH

REQUIRED PER ASSEMBLY	QTY	NUMBER	NAME	REMARKS	ITEM NO.
<p>AMP 1740 REV 7/67</p> <p>AMP INCORPORATED ALL RIGHTS RESERVED. AMP PRODUCTS COVERED BY PATENTS AND/OR PATENTS PENDING.</p> <p>CUSTOMER COPY REFERENCE ONLY</p> <p>AMP INCORPORATED HARRISBURG, PENNA.</p>					
DR					
CHK					
DE					
APP					
DESCRIPTION		MATERIAL AND FINISH		CLASS	
		WIRE - RANGE - INSULATION		TYPE	
		TOLERANCE EXCEPT AS NOTED		SCALE	
		SCALE		LOC	
		NAME		REV	
		T HEAD ASSEMBLY MOD V		NO 59275 VI	

# Mouser Electronics

Authorized Distributor

Click to View Pricing, Inventory, Delivery & Lifecycle Information:

[TE Connectivity:](#)

[59275](#)