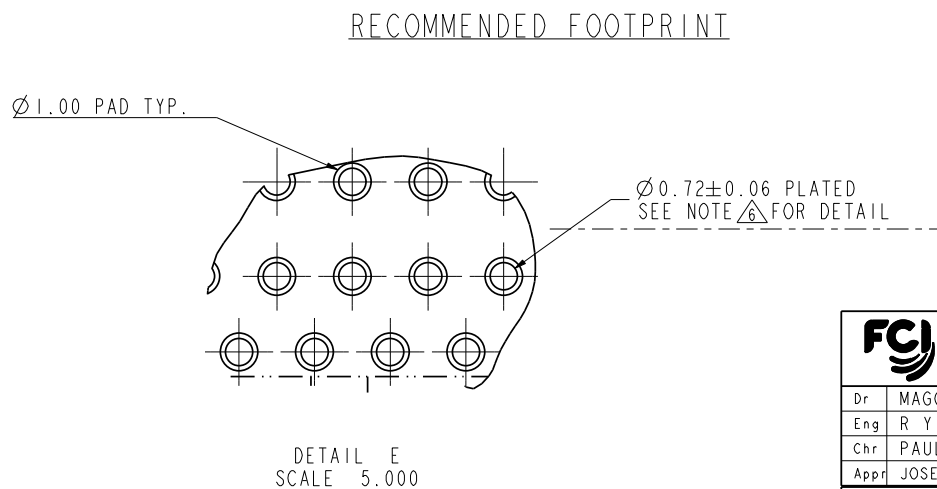
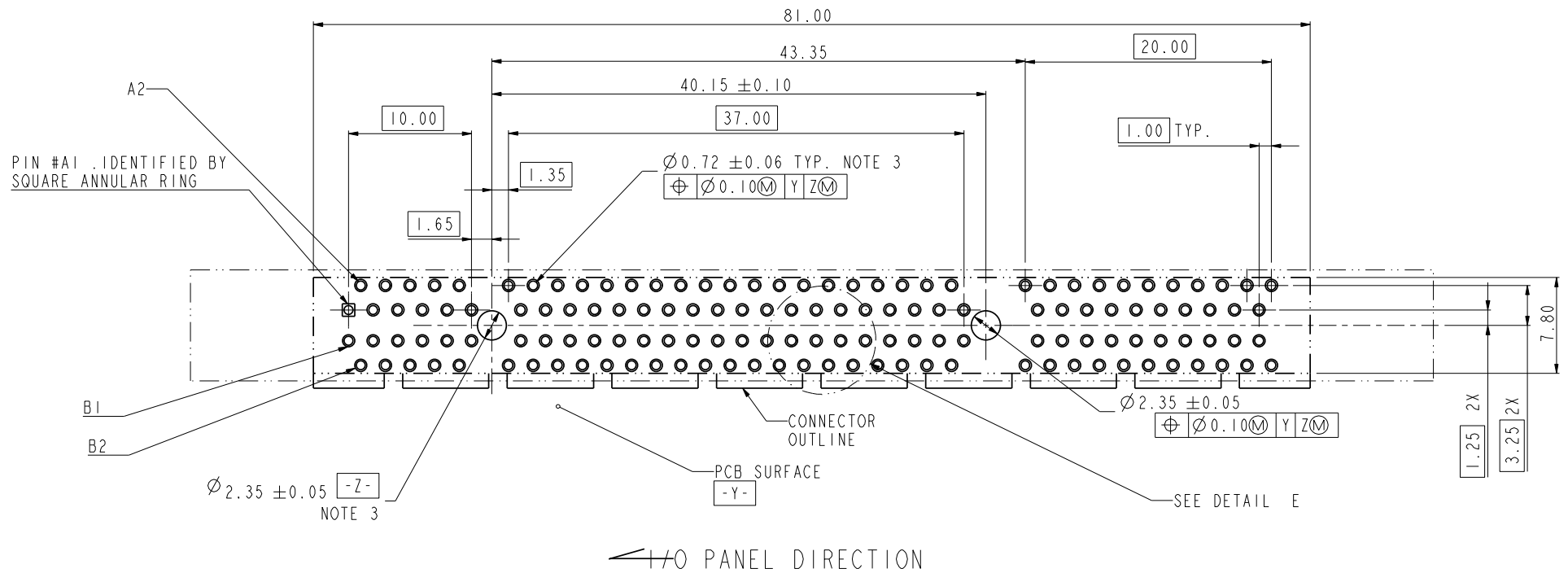

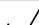




R DRAWING sheet 1 of 5
Printed: Mar 15, 2014

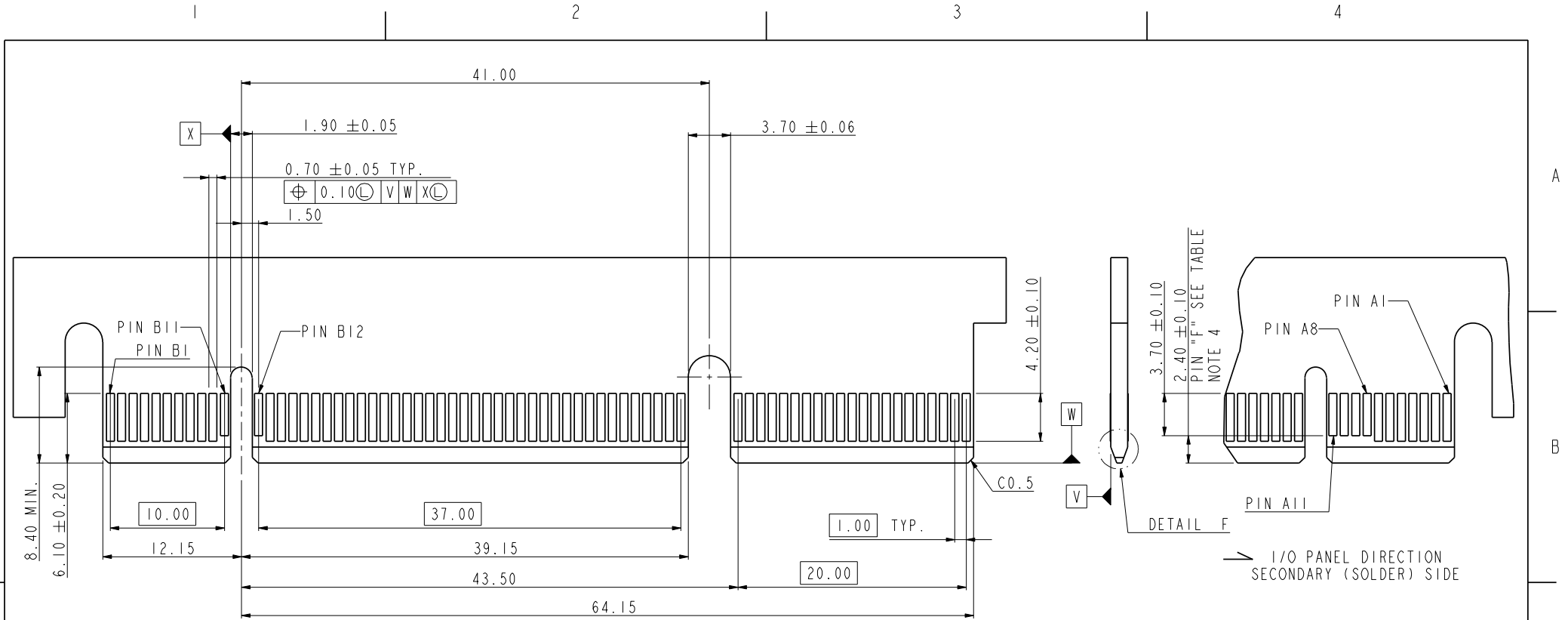


 www.fciconnect.com			 tolerance		projection 			
Dr	MAGGIE WU	04/20/05	Product family			size	Scale	
Eng	R Y LIU	04/20/05	Spec ref			A4	1.000	
Chr	PAUL WANG	04/20/05	Material			ECN	DG06-0249	
Appr	JOSEPH HSIA	04/20/05						
title PCI Express ExpressModule CARD EDGE 140P PRESS-FIT ASS'Y						dwg no 10055295		Rev. F
catalog no						CUSTOMER DRAWING		sheet 2 of 5

Tous droits strictement réservés. Reproduction ou communication à des tiers interdite sous quelque forme que ce soit sans autorisation écrite du propriétaire. Propriété de FCI. Droits de reproduction FCI.



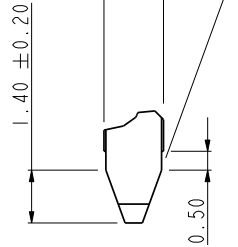
All rights strictly reserved. Reproduction or issue to third parties in any form whatever is not permitted without written authority from the proprietor. Property of FCI. Copyright FCI.



I/O PANEL DIRECTION
PRIMARY (COMPONENT) SIDE

I/O PANEL DIRECTION
SECONDARY (SOLDER) SIDE


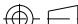

1.57 ± 0.13
ACROSS PADS



DETAIL F
SCALE 5.000

CONNECTOR LINK WIDE	#POS REF.	"F" NOTE 4
X8E	140	A8,A9,A10,A11 B11,B12

tolerance unless otherwise specified	
linear	.X ± .2 .XX ± .13 .XXX ± .05
angles	0° ± 2°

		www.fciconnect.com		✓		tolerance					
Dr	MAGGIE WU	04/20/05	Product family			size			Scale		
Eng	R Y LIU	04/20/05	Spec ref			A4			1.000		
Chr	PAUL WANG	04/20/05	Material			ECN			DG06-0249		
Appr	JOSEPH HSIA	04/20/05									
title		PCI Express ExpressModule CARD EDGE 140P PRESS-FIT ASS'Y					dwg no		10055295		Rev.
catalog no		PDM: Rev:F					CUSTOMER DRAWING		sheet 3 of 5		

STATUS: Released

Printed: Mar 15, 2011

NOTES:

1. MATERIAL:

HOUSING: HIGH TEMPERATURE NYLON, GLASS FILLED UL94V-0
RATED. SUITABLE FOR REFLOW SOLDERING.

TERMINAL: COPPER ALLOY

PLATING: 50u" NICKEL UNDERPLATE ALL OVER

CONTACT AREA PLATING - SEE PRODUCT NUMBER CODE

SOLDER TAIL: TIN - 100u" MIN. OVER 50u" NICKEL OR TIN/LEAD 100u" MIN.

SEE PRODUCT NUMBER CODE

2. PRODUCT SPECIFICATION: GS-12-319

THE HORIZONTAL AXIS FOR THE HOLE PATTERN IS ESTABLISHED BY

A LINE THROUGH THE CENTER OF THE TWO Ø2.35 HOLES.

THE VERTICAL AXIS IS 90° TO THE HORIZONTAL AXIS, THROUGH THE CENTER OF DATUM Z.

NO TIE BAR PERMITTED FROM CARD EDGE TO LEADING EDGE OF PAD FOR

PINS A1 AND PIN NUMBERS "F".

CHAMFER EDGES MUST BE FREE OF CUTTING BURRS.

ALL PLATED THRU HOLES SHOULD BE 0.76~0.83 mm DIA DRILLED AND 0.025mm ~ 0.05mm.

ELECTRO-DEPOSITED COPPER THK ON THROUGH HOLE WALL.

7. RoHS COMPATIBLE PRODUCT SPECIFICATIONS

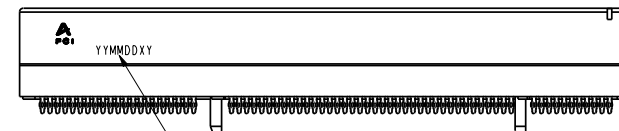
a-PLATING:

- "LF" MEANS THE PRODUCT IS LEAD-FREE, 2um MINIMUM MATTE TIN OVER 1.27um
MINIMUM NICKEL UNDERPLATE.

b-MANUFACTURING PROCESS COMPATIBILITY

- THE HOUSING WILL WITHSTAND EXPOSURE TO 260°C±5°C SOLDER BATH TEMPERATURE FOR

10 SECONDS IN A REFLOW SOLDER APPLICATION WITH A 2.36mm AND 4.19mm MIN THICK CIRCUIT BOARD.



Date code:

"YY" means year number

"MM" means month number

"DD" means day number

"X" means manufacture location

"D" means made in Dongguan site

"Y" means shift number

If date code is 060626D1, it means this part
is made by shift 1 in 2006/06/26 and manufactured
in Dongguan site

Date code should be laser mark

PRODUCT NUMBER CODE

10055295 - X X X X X X X X

HOUSING COLOR OPTIONS
1-BLACK

PEGS OPTIONS
0-PLASTIC PEGS

TERMINAL PLATING OPTIONS

0-50u" Ni UNDERPLATE

30u" Au CONTACT AREA

100u" TIN TAIL AREA -----COMPATIBLE RoHS

3-50u" Ni UNDERPLATE

30u" Au CONTACT AREA

100u" TIN/LEAD TAIL AREA -----RoHS COMPLIANT EXCEPT Pb

LEAD FREE OPTION

"LF" FOR TERMINAL PLATING OPTION 0

LEAVE BLANK FOR TERMINAL PLATING OPTION 3

PACKAGING OPTIONS
T-TRAY PACKAGING

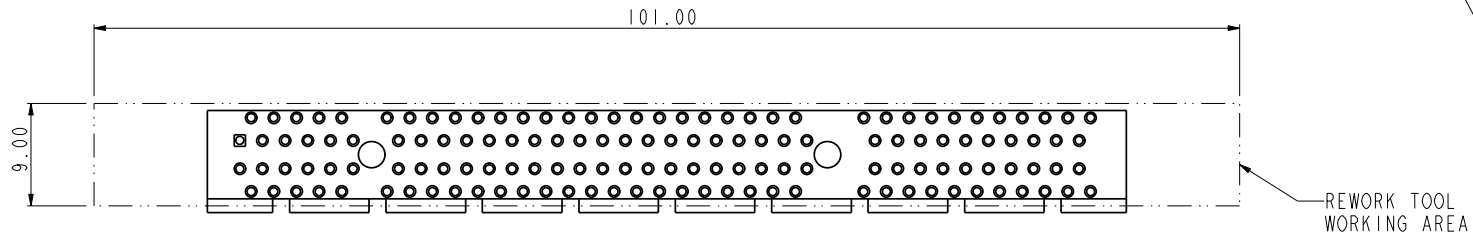
RESERVE
0

TAIL LENGTH OPTIONS

	DIM "D"	SUGGESTED PCB THICKNESS
0	2.00±0.20	2.36
1	3.25±0.20	4.19

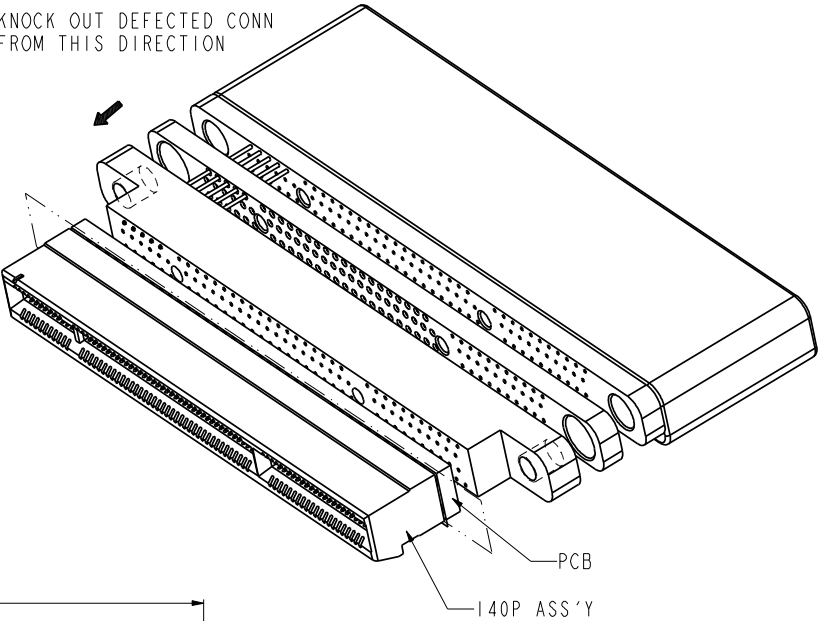
tolerance unless otherwise specified	
linear	.X ± .3
	.XX ± .2
	.XXX ± .1
angles	0° ± 2°





FCI www.fciconnect.com		✓	tolerance	projection	MM
Dr	MAGGIE WU	04/20/05	Product family	size	A4
Eng	R Y LIU	04/20/05	Spec ref	Scale	1.000
Chr	PAUL WANG	04/20/05	Material	ECN	DG06-0249
Appr	JOSEPH HSIA	04/20/05			
title			PCI Express ExpressModule CARD EDGE 140P PRESS-FIT ASS'Y		Rev.
catalog no			10055295		F
PDM: Rev:F			STATUS: Released		Printed: Mar 15, 2011



I40P
SCALE 1.500

KNOCK OUT DEFECTED CONN
FROM THIS DIRECTION



		www.fciconnect.com				tolerance	projection 	
Dr	MAGGIE WU	04/20/05	Product family			size A4	Scale 1.000	
Eng	R Y LIU	04/20/05	Spec ref					
Chr	PAUL WANG	04/20/05	Material			ECN	DG06-0249	
Appr	JOSEPH HSIA	04/20/05						
title	PCI Express ExpressModule CARD EDGE I40P PRESS FIT ASS'Y					dwg no 10055295	Rev. F	
	catalog no						CUSTOMER	
	PDM: Rev:F						sheet 5 of 5	
	STATUS: Released						Printed: Mar 15, 2011	

Mouser Electronics

Authorized Distributor

Click to View Pricing, Inventory, Delivery & Lifecycle Information:

[FCI / Amphenol:](#)

[10055295-10000TLF](#) [10055295-10010TLF](#) [10055295-10300T](#) [10055295-10310T](#)