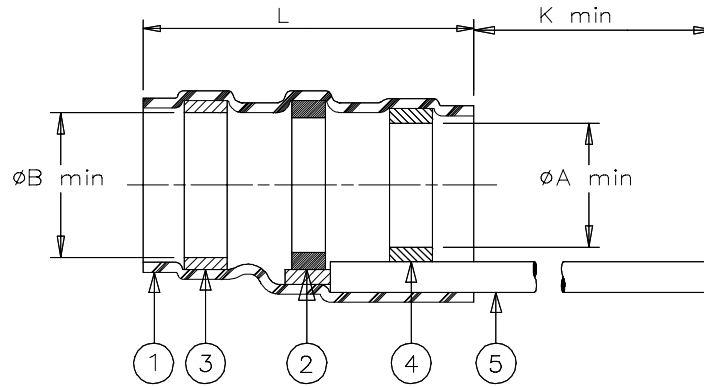


SPECIFICATION CONTROL DRAWING



Product Revisions		Product Dimensions				Cable Dimensions		
Product Name		L max	A min	B min	K min	D max	E min	J±0.5 (J±0.02)
D-142-84	E	17.25 (0.680)	2.70 (0.105)	3.10 (0.125)	150 (5.900)	2.70 (0.105)	0.9 (0.035)	7 (0.275)
D-142-85	E	17.25 (0.680)	4.30 (0.170)	5.00 (0.200)	150 (5.900)	4.30 (0.170)	1.9 (0.075)	7 (0.275)
D-142-86	H	20.5 (0.805)	6.90 (0.275)	7.60 (0.300)	150 (5.900)	6.90 (0.270)	3.56 (0.140)	7 (0.275)

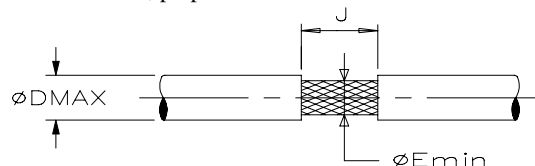
MATERIAL

- INSULATION SLEEVE: Heat-shrinkable, radiation cross-linked modified polyvinylidene fluoride. Transparent clear.
- SOLDER PREFORM WITH FLUX:
SOLDER: TYPE Cd18 per ANSI J-STD-006.
FLUX: TYPE ROL1 per ANSI J-STD-004.
- MELTABLE RING: Thermally stabilized thermoplastic. Color: blue black.
- MELTABLE RING: Thermally stabilized thermoplastic. Color: grey.
- GROUND LEAD: RAYCHEM 55A0111-20 in accordance with MIL-W-22759/32 AWG 20 stranded tin plated copper. Color: white.

APPLICATION

- These parts are designed to provide an environment protected shield termination on cables, rated for 105°C minimum, meeting the dimensional criteria listed and having tin or silver plated shields.
- Temperature range: -55°C to +125°C.
- Install using Raychem-approved convection or infrared heating tools in accordance with Raychem process standard RCPS-100-70.

For best results, prepare the cable as shown:



*A trademark of Raychem Corporation.

Raychem		THERMOFIT DEVICES		Raychem Corporation 300 Constitution Drive Menlo Park, CA 94025 USA		TITLE: SOLDERSLEEVE* DEVICE WITH PRE-INSTALLED LEAD LOW TEMPERATURE							
UNLESS OTHERWISE SPECIFIED DIMENSIONS ARE IN MILLIMETERS. INCHES DIMENSIONS ARE BETWEEN BRACKETS.						DOCUMENT NO D-142-8X							
TOLERANCES: 0.00 N/A 0.0 N/A 0 N/A		ANGLES: N/A ROUGHNESS IN MICRON		Raychem reserves the right to amend this drawing at any time. Users should evaluate the suitability of the product for their application.		DCR NUMBER: D980571		REPLACES: D1428X					
DRAWN BY: R. MAPALO		DATE: 06/01/98		REV. SEE TABLE		DOC ISSUE: 4		SCALE:: NONE		SIZE: A		SHEET: 1 of 1	

If this document is printed it becomes uncontrolled. Check for the latest revision.

Mouser Electronics

Authorized Distributor

Click to View Pricing, Inventory, Delivery & Lifecycle Information:

[TE Connectivity:](#)

[1-1194518-7](#) [1-1194938-9](#)