

LOC	DIST	REVISIONS					
		P	LTR	DESCRIPTION	DATE	DWN	APVD
AD	00		B	ECO 06 000585	09AUG06	BSV	MZ

SPECIFICATIONS:


MATERIALS:
CASE: HIGH TEMPERATURE POLYESTER.
ACTUATOR: POLYIMIDE. COLOR: SEE BELOW.
MOVING CONTACT: COPPER ALLOY: GOLD OVER NICKEL PLATE.
FIXED CONTACT: COPPER ALLOY. TIN/LEAD OVER NICKEL PLATE.
TERMINAL: COPPER ALLOY. TIN/LEAD OVER NICKEL PLATE.
TERMINAL SEAL: EPOXY.

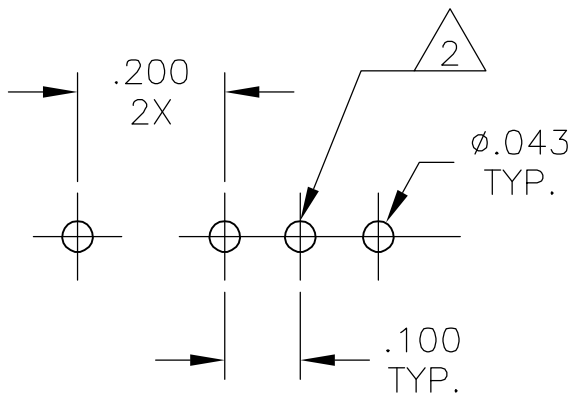
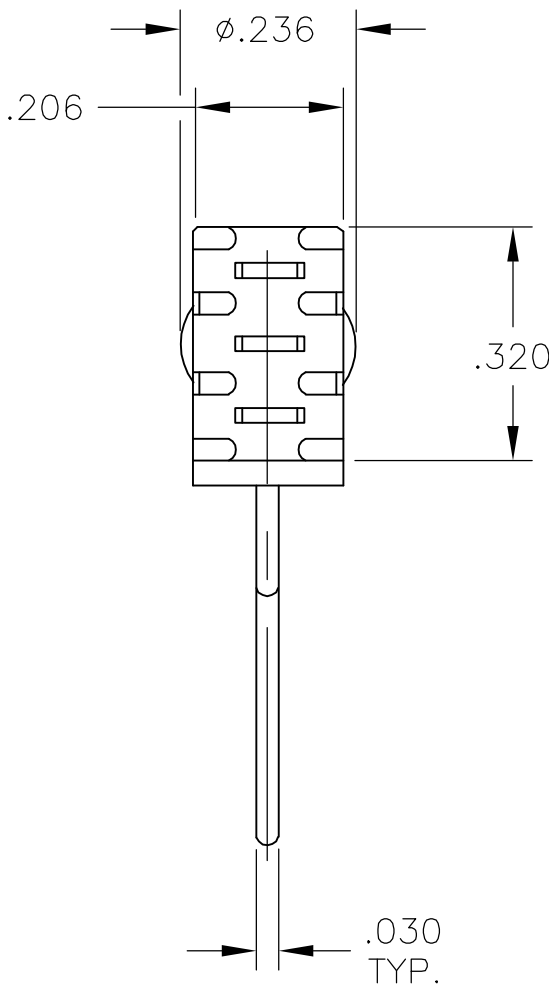
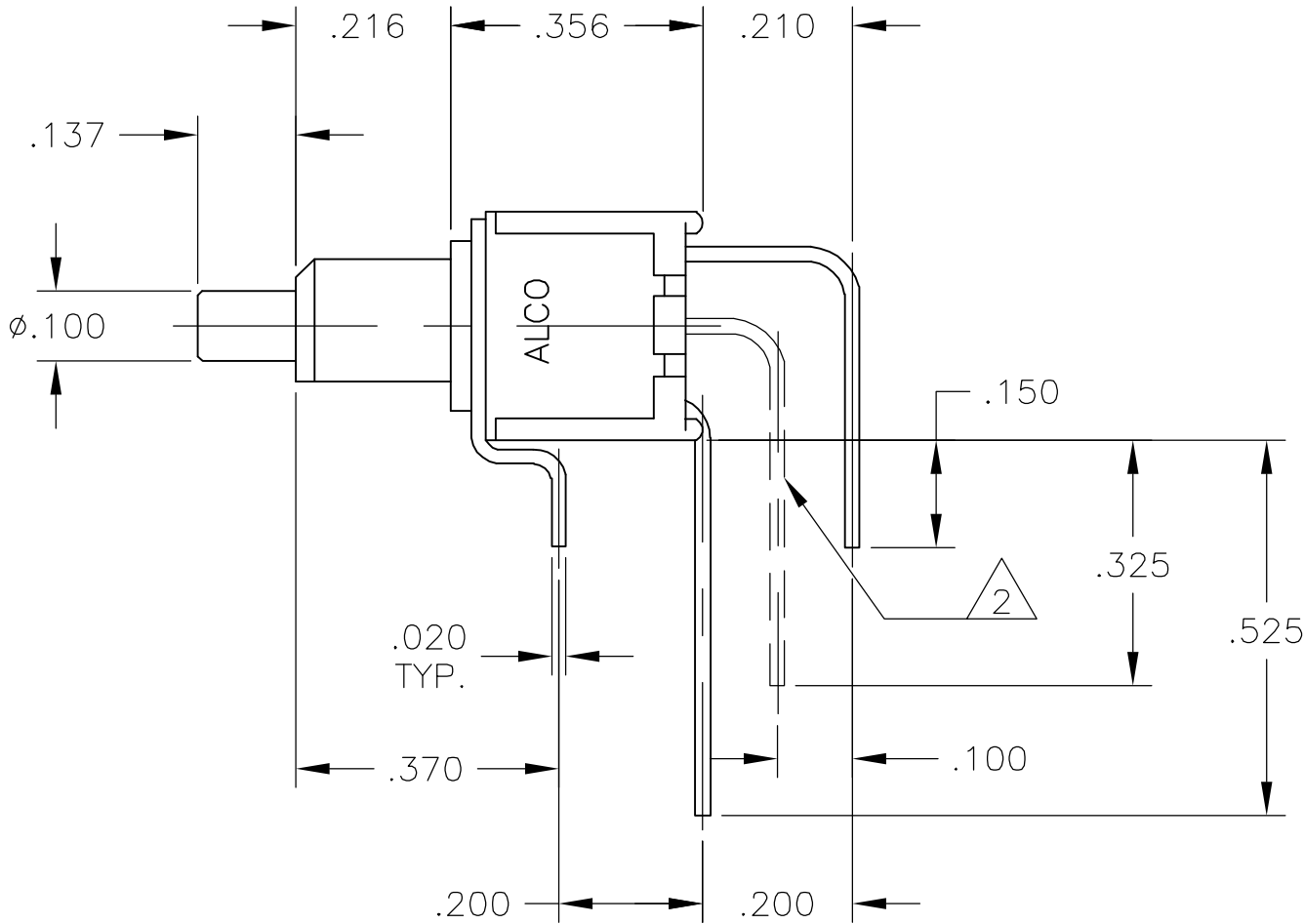
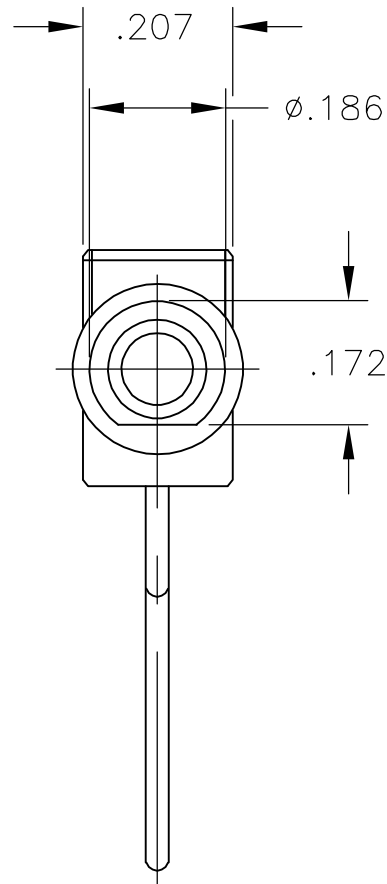
ELECTRICAL:
CONTACT RATING: 0.4 VA MAX. @ 20 VDC OR PEAK AC.
INITIAL CONTACT RESISTANCE: 20 MILLIOHMS MAX.
INSULATION RESISTANCE: 1,000 MEGHAOHMS @ 500 VDC MIN.
DIELECTRIC STRENGTH: 1,000 VOLTS @ SEA LEVEL.
LIFE EXPECTANCY: 60,000 CYCLES.

MECHANICAL:
ACTUATION FORCE: 50 TO 400 GRAMS.
ACTUIATION TRAVEL: .030" APPROX.

ENVIRNAMENTAL:
OPERATING TEMPARATURE: -22°F TO +149°F (-30°C TO +65°C)
STORAGE TEMPRATURE: -22°F TO +149°F (-30°C TO +65°C).

NOTES:

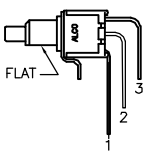
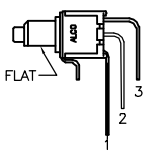
1. INTERPRET DRAWING PER ANSI Y14.5M-1982.
-  CENTER TERMINAL FOR "F" FUNCTION SWITCHES ONLY.



RECOMMENDED HOLE LAYOUT
TOLERANCE ±.002 UNLESS
OTHERWISE NOTED.

(*)	BUTTON COLOR
(0)	BLACK
(2)	RED
(6)	BLUE

TERMINALS CONNECTED WHEN BUTTON IS IN
POSITION SHOWN.

FUNCTION CODE		
	FLAT →	FLAT →
C	(1-3)	OFF
F	(2-3)	(2-1)

() - INDICATES A MOMENTARY CIRCUIT

TERMINAL DESIGNATIONS ARE FOR REFERENCE
ONLY AND DO NOT APPEAR IN THE SWITCHES.

THIS DRAWING IS A CONTROLLED DOCUMENT.			DWN	S.STARNES.	22FEB00	<div><div><div>tyco</div><div>Electronics</div></div><div>Tyco Electronics Corporation Harrisburg, Pa 17105-3608</div></div>						
DIMENSIONS: INCHES			CHK	S.STARNES.	22FEB00							
<div><div><div></div><div></div></div><div><div>0 PLC ± -</div><div>1 PLC ± -</div><div>2 PLC ± -</div><div>3 PLC ± .010</div><div>4 PLC ± -</div><div>ANGLES ± 1°</div></div></div>			APVD	-	NAME PUSH BUTTON SWITCH TPB11 *GVRA (*)							
			PRODUCT SPEC									
			APPLICATION SPEC									
			MATERIAL			FINISH		WEIGHT	-	SIZE	CAGE CODE	DRAWING NO
SEE SPECIFICATIONS			SEE SPECIFICATIONS		A2		00779	C=6-1437571-3		-		
CUSTOMER DRAWING							SCALE	4:1	SHEET	1 of 1	REV	B

Mouser Electronics

Authorized Distributor

Click to View Pricing, Inventory, Delivery & Lifecycle Information:

[TE Connectivity:](#)

[TPB11FGVRA0](#)