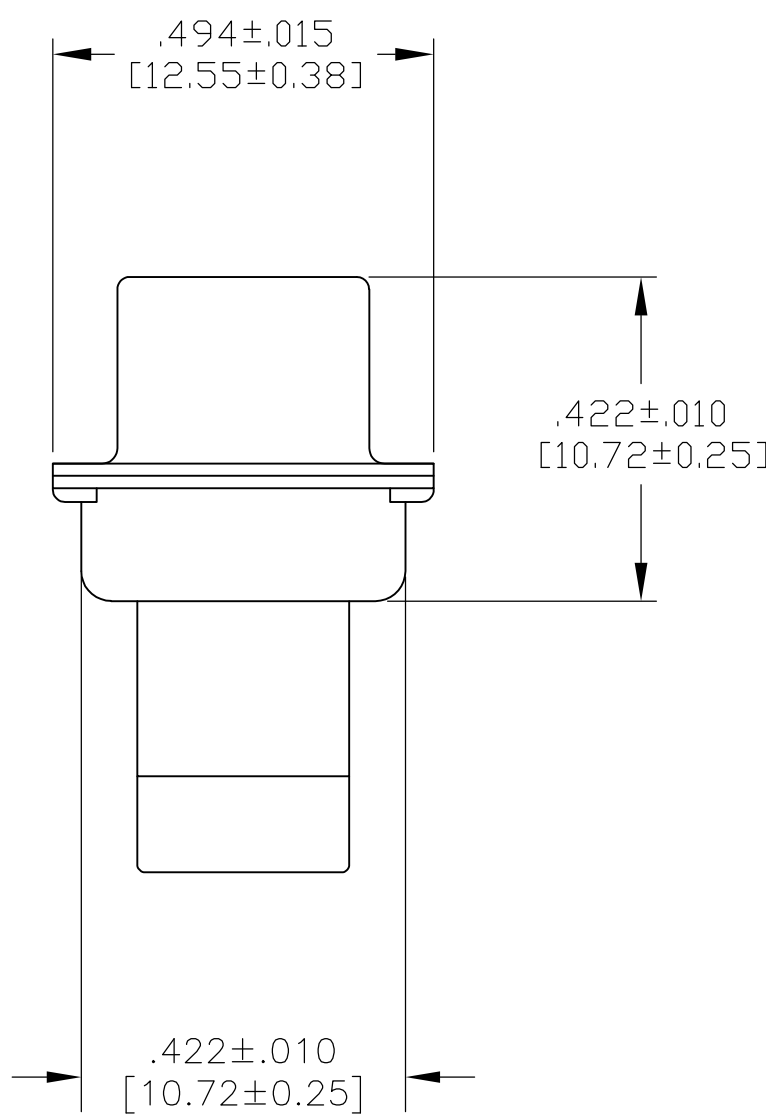
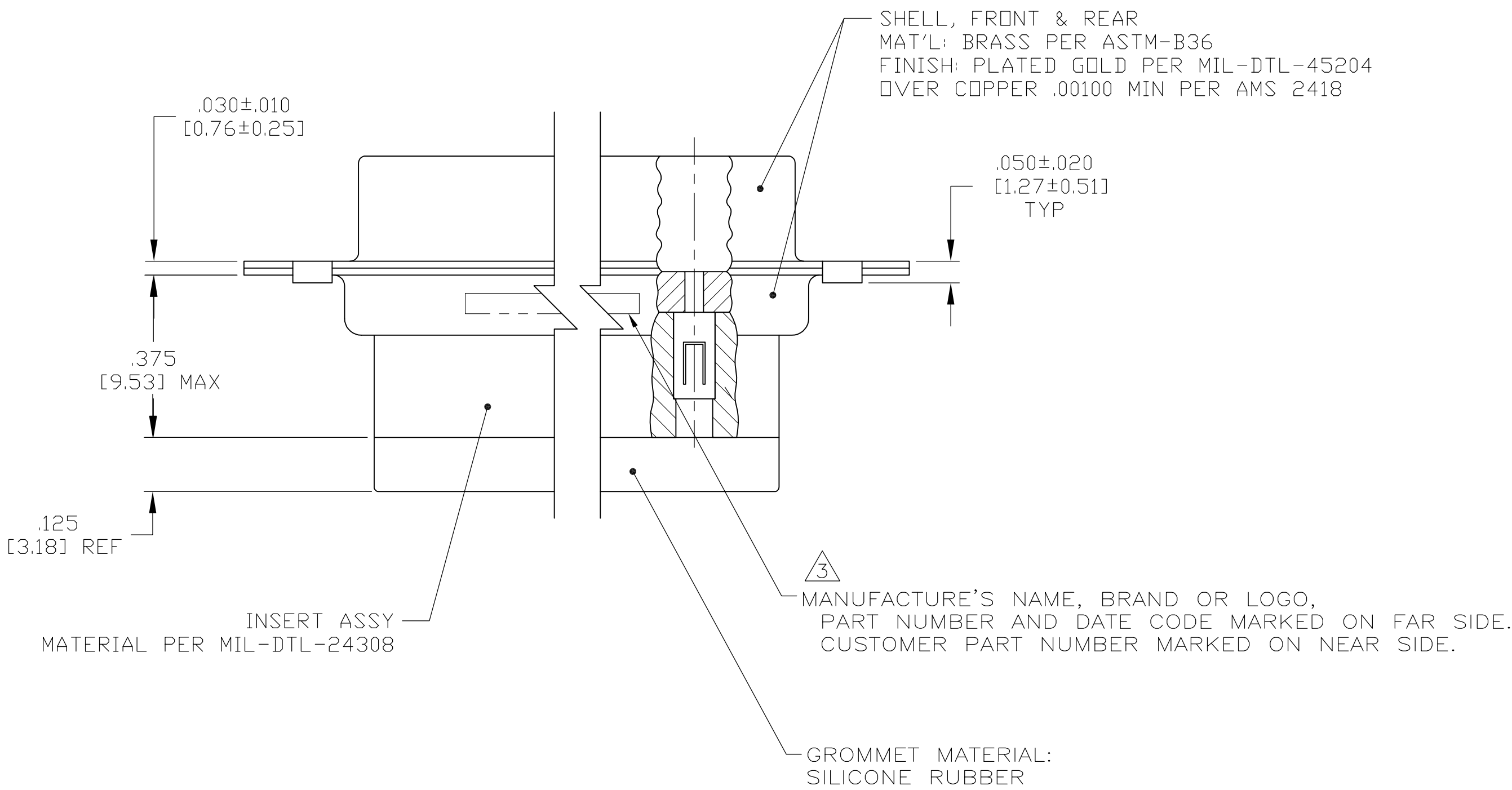


- THIS CONNECTOR ASSEMBLY IS SUPPLIED WITH Be Cu CONTACT RETENTION CLIPS INSTALLED IN THE INSERT ASSEMBLY.
- THIS CONNECTOR ASSEMBLY MATES WITH ANY PLUG CONNECTOR WITH THE SAME INSERT ARRANGEMENT AND DIMENSIONAL REQUIREMENTS PER MIL-C-24308.
- MARKED WITH .047 [1.19]-.062 [1.57] HIGH CHARACTERS. FAR SIDE REFERS TO THE WIDE SIDE OF THE KEYSTONE. NEAR SIDE REFERS TO THE NARROW SIDE OF THE KEYSTONE.
- MAXIMUM WIRE INSULATION TO BE USED WITH THIS CONNECTOR ASSEMBLY IS .068 [1.73] DIAMETER.
- SPECIAL REQUIREMENTS PER BOEING 1A01 DOCUMENT.
- BUILT TO ORDER, NO INVENTORY OF THIS PART NUMBER IS TO BE KEPT. SINGLE LOT DATE CODE REQUIRED.



| | | |
|---------|------------------|-------------|
| 6 | 1A01-O27PHW | 1-211639-1 |
| -- | --- | 211639-4 |
| 6 | 1A01-O27PHA | 211639-1 |
| REMARKS | CUSTOMER MARKING | PART NUMBER |

| | | | | | |
|--|--|--|-------------------------------|---|--|
| THIS DRAWING IS A CONTROLLED DOCUMENT. | | DWN P. YEAGER CHK R. LEASE REV R. LEASE | 13FEB09 13FEB09 13FEB09 | TE Connectivity | |
| DIMENSIONS: INCHES [mm] | | TOLERANCES UNLESS OTHERWISE SPECIFIED: | | NAME | |
| 0 PLC ± - | | 1 PLC ± - | | PLUG ASSY.,AMPLIMITE,15 POSN.,SIZE 2, SERIES 109 WITH GROMMET | |
| 2 PLC ± - | | 3 PLC ± .005 [0.13] | | APPLICATION SPEC | |
| 4 PLC ± - | | ANGLES ± - | | SIZE | |
| MATERIAL - | | FINISH - | | CAGE CODE | |
| | | | | DRAWING NO | |
| | | | | RESTRICTED TO | |
| | | | | A100779C211639 | |
| | | | | CUSTOMER DRAWING | |
| | | | | SCALE 4:1 | |
| | | | | SHEET 1 OF 1 | |
| | | | | REV J | |

Mouser Electronics

Authorized Distributor

Click to View Pricing, Inventory, Delivery & Lifecycle Information:

[TE Connectivity:](#)

[1-211639-1](#)