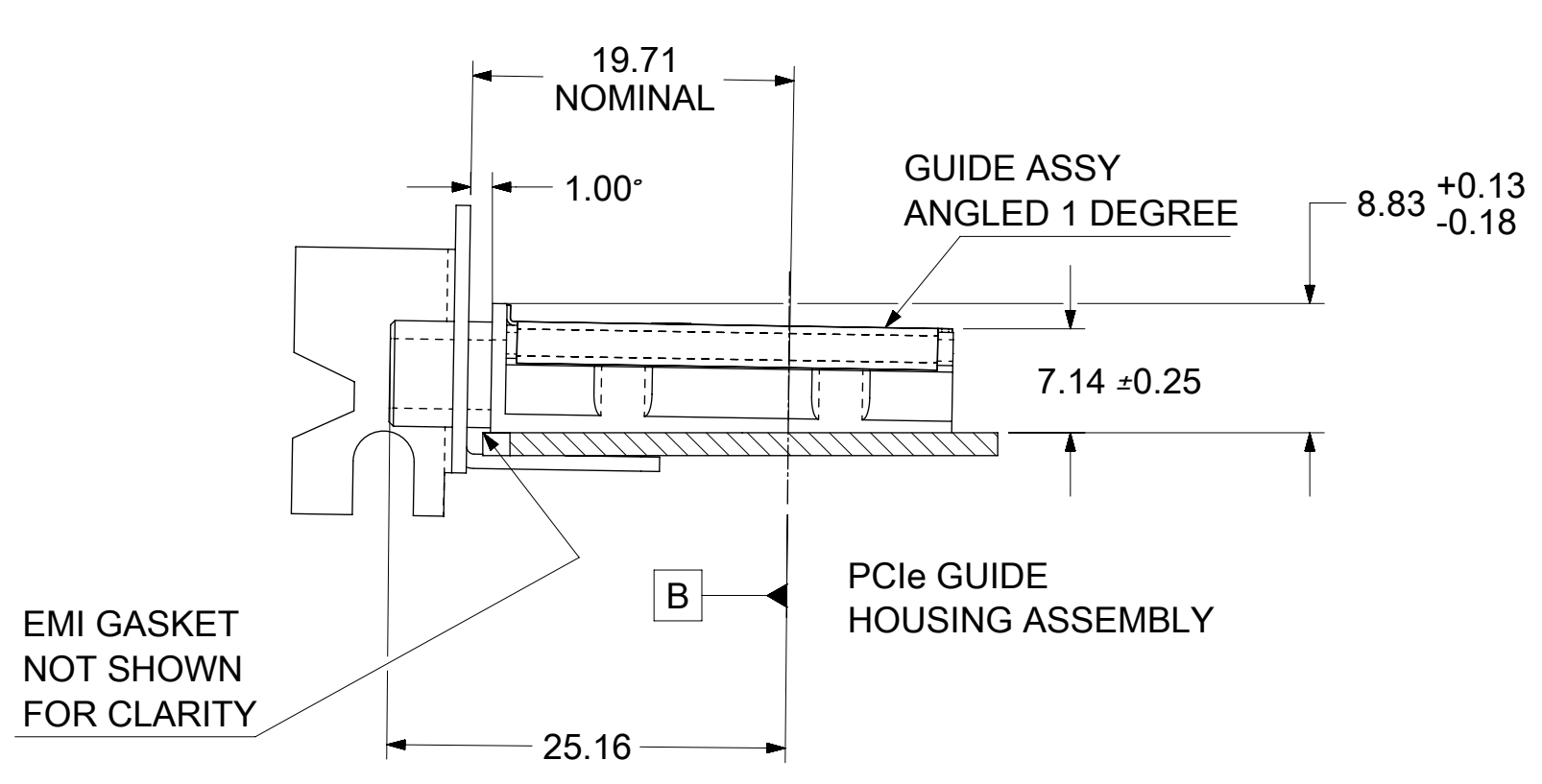


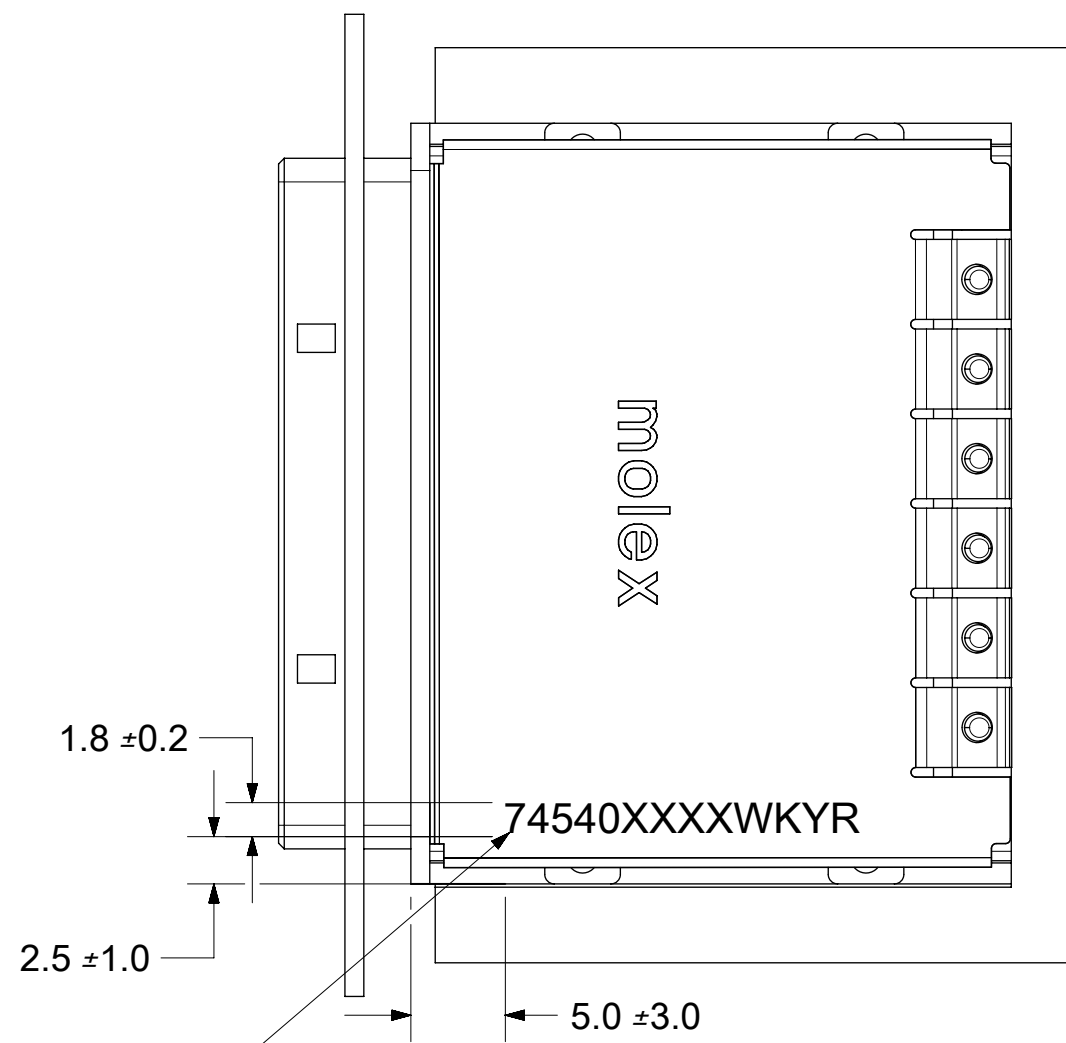
- NOTES:
- REF. PCI EXPRESS CARD ELECTROMECHANICAL SPECIFICATION, REV 1.0a FOR IO BRACKET WINDOW LOCATION.
  - PCB AND IO BRACKET SHOWN FOR REFERENCE ONLY.
  - REFER TO SHEET 2 FOR ATCA GUIDE HOUSING ASSY. SEE SHEET 3 FOR SCREEN LENGTH + TORQUE SPEC.
  - GUIDE HOUSING MOUNTING THREAD=M2 X 0.4
  - PCB NOTCH IS SHOWN FOR PCI COMPLIANT BOARD.
  - THIS PRODUCT MEETS THE RESTRICTIONS OF HAZARDOUS SUBSTANCES IN ELECTRICAL AND ELECTRONIC EQUIPMENT (RoHS) DIRECTIVE (2002/95/EC)
  - PLATE GROUND PAD WITH EMERSION SILVER OR GOLD.
  - MATES WITH MOLEX 8X CABLE SERIES 74546-080X.
  - GUIDE HOUSING PEGS FOR ALIGNMENT ONLY. "DO NOT SOLDER"

PCIe EXPANSION CARD APPLICATION SHOWN USING 1 DEGREE GUIDE HOUSING ASSEMBLY



iPass™ is a trademark of Molex

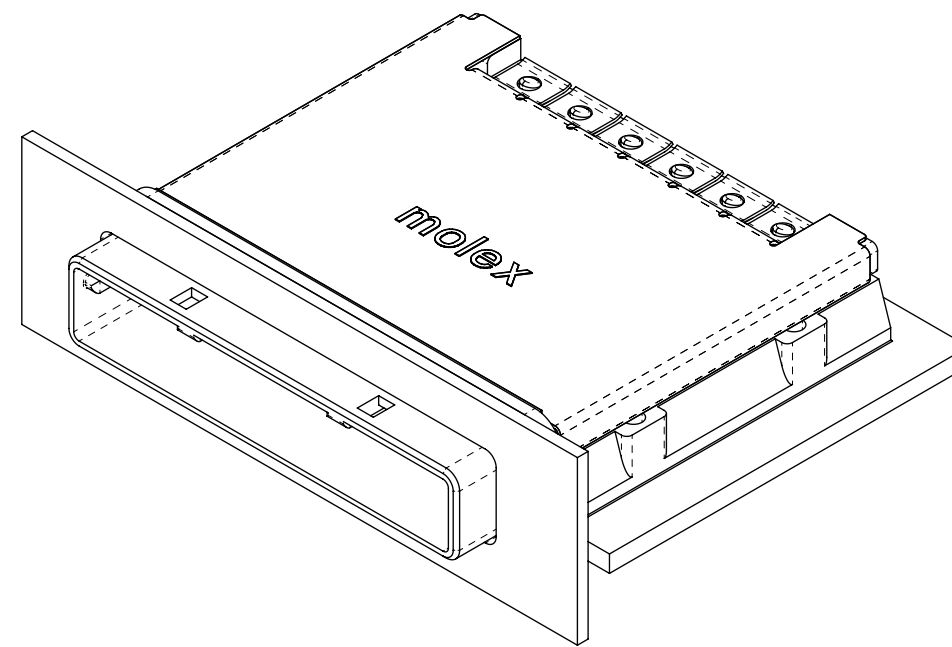
SYMBOLS										THIS DRAWING CONTAINS INFORMATION THAT IS PROPRIETARY TO MOLEX ELECTRONIC TECHNOLOGIES, LLC AND SHOULD NOT BE USED WITHOUT WRITTEN PERMISSION									
DIMENSION UNITS					SCALE					CURRENT REV DESC: SEE REVISION TABLE									
mm					2:1					EC NO: 610421 DRWN: NMUTHARAYAPP 2018/12/13 CHK'D: VK10 2019/01/15 APPR: RCHEN08 2019/01/15 INITIAL REVISION: DRWN: NMUTHARAYAPP 2018/12/13 APPR: RCHEN08 2019/01/15									
GENERAL TOLERANCES (UNLESS SPECIFIED)																			
ANGULAR TOL ± 0.5°										PRODUCT CUSTOMER DRAWING									
4 PLACES ±					2 PLACES ± 0.05					DOCUMENT NUMBER					DOC TYPE   DOC PART   REVISION				
3 PLACES ±					1 PLACE ± 0.1					745400100					PSD   ASY   R				
2 PLACES ±					0 PLACES ±					MATERIAL NUMBER					CUSTOMER				
DRAFT WHERE APPLICABLE MUST REMAIN WITHIN DIMENSIONS					THIRD ANGLE PROJECTION					DRAWING					SERIES				
					C-SIZE					74540					SEE TABLE				
DOCUMENT STATUS										SHEET NUMBER									
P1										1 OF 4									
RELEASE DATE										2019/01/15 05:53:02									



P/N AND WEEK/YEAR DATE CODE TO BE PRINTED ON THE TOP OF COMPLETED CAGE ASSEMBLY AS SHOWN. SEE TABLE BELOW FOR DATE CODE INFORMATION.

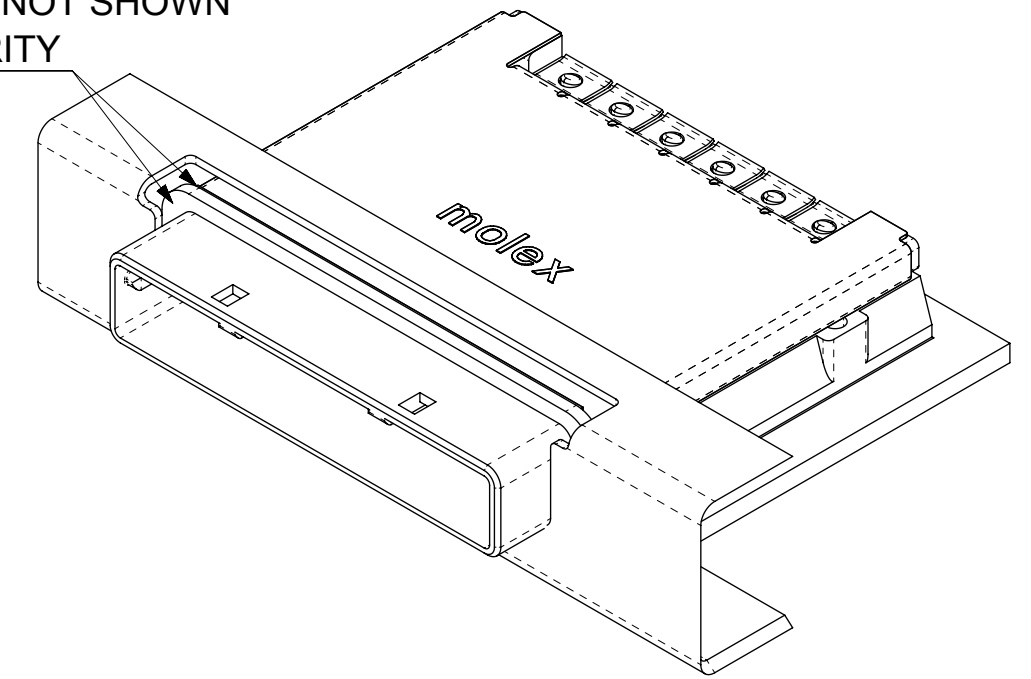
WEEK/YEAR DATE CODE TABLE

WK	WEEK OF THE YEAR 01 THRU 52 (EXAMPLE: 01= FIRST WEEK OF YEAR 52= LAST WEEK OF YEAR)
YR	19, 20, 21,, ETC.. (EXAMPLE: YEAR 2019= 19)

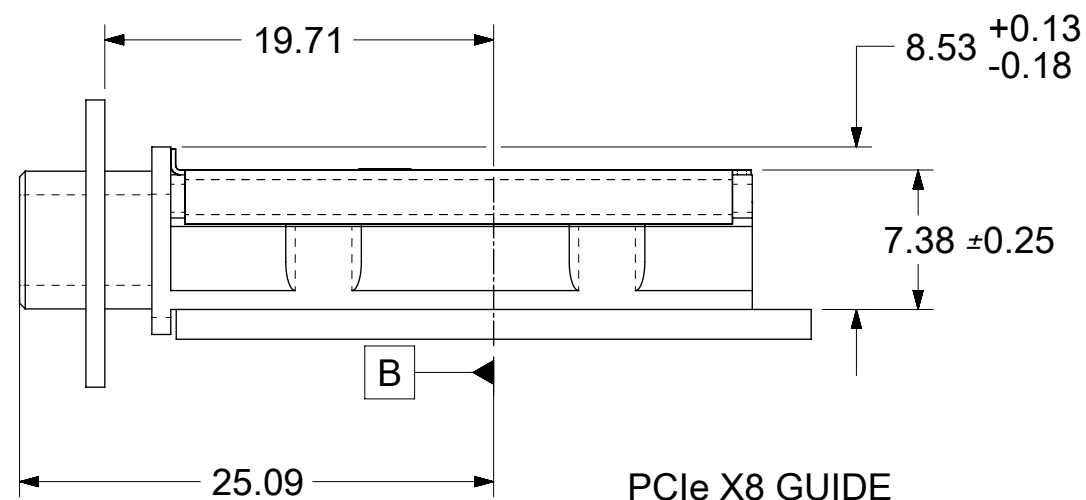
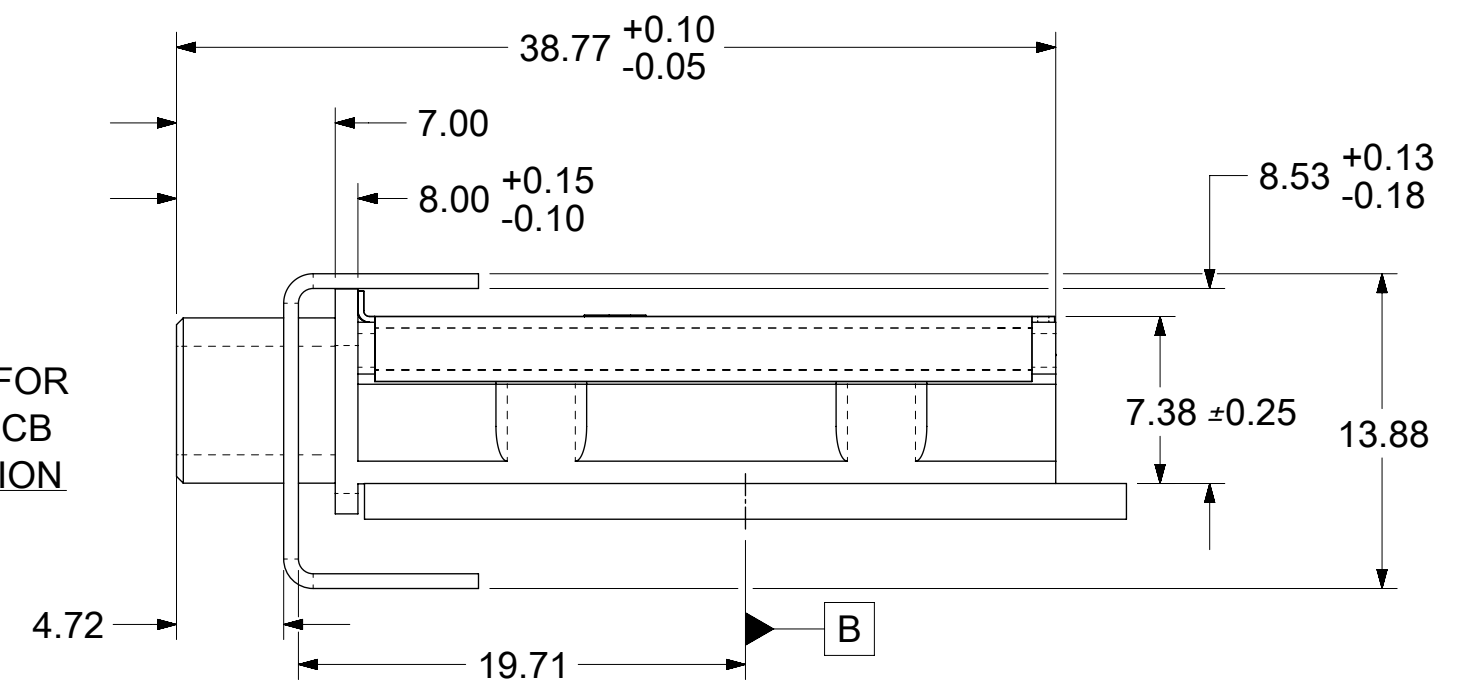
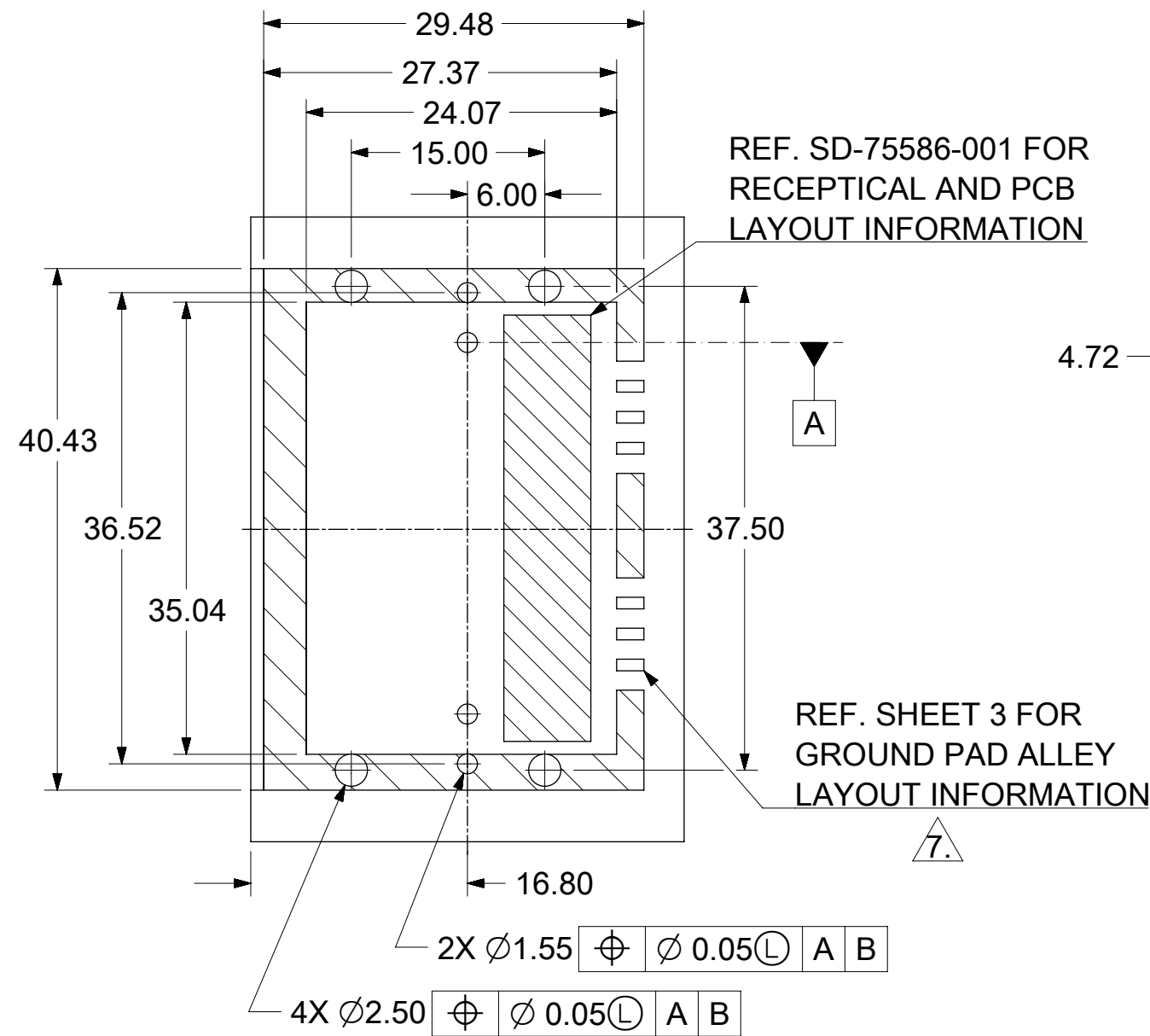


STANDARD APPLICATION SHOWN USING 0 DEG GUIDE HOUSING ASSEMBLY

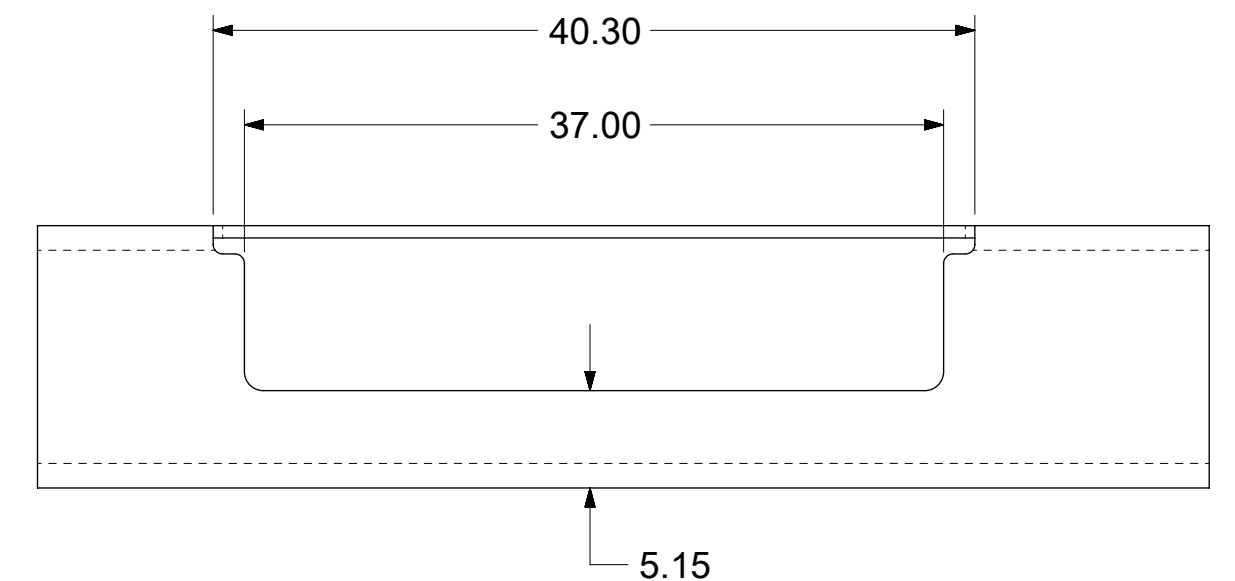
GASKETS NOT SHOWN FOR CLARITY



ADVANCED TCA APPLICATION USING 0 DEG GUIDE HOUSING ASSEMBLY



PCIe X8 GUIDE HOUSING ASSEMBLY

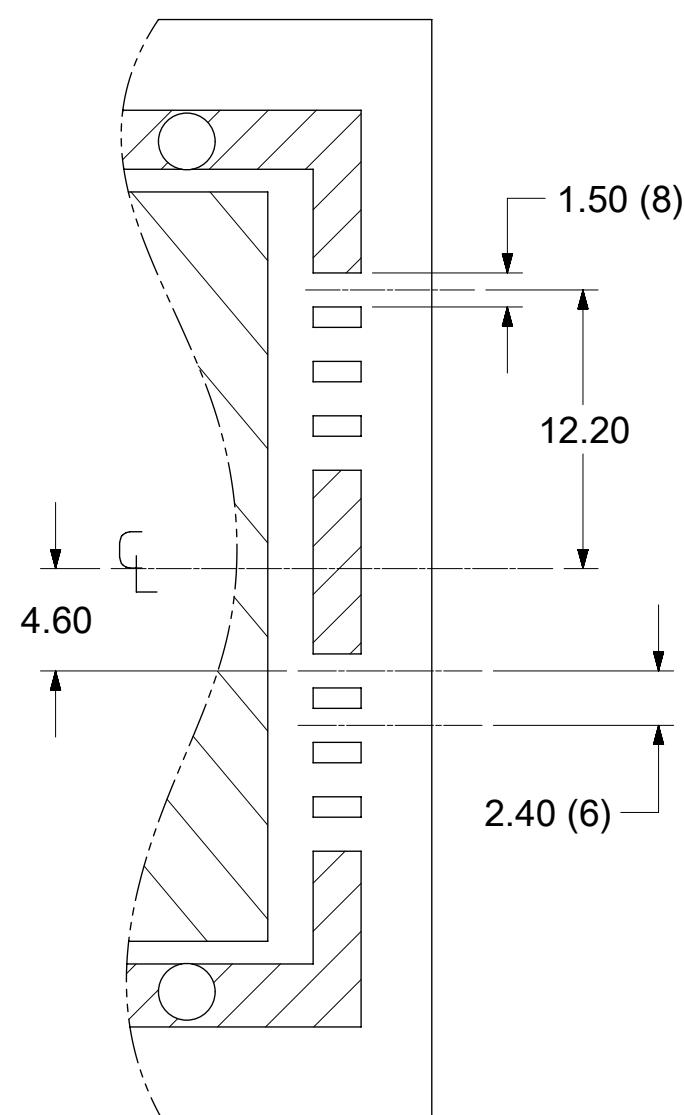


iPass™ is a trademark of Molex

SYMBOLS		THIS DRAWING CONTAINS INFORMATION THAT IS PROPRIETARY TO MOLEX ELECTRONIC TECHNOLOGIES, LLC AND SHOULD NOT BE USED WITHOUT WRITTEN PERMISSION		CURRENT REV DESC: SEE REVISION TABLE		molex	
▽ = 0	0	DIMENSION UNITS	SCALE	EC NO: 610421		I-PASS X8 EMI GUIDE HOUSING ASSEMBLY	
▽ = 0	0	mm	1:1	DRWN: NMUTHARAYAPP 2018/12/13		PRODUCT CUSTOMER DRAWING	
▽ = 0	0	GENERAL TOLERANCES (UNLESS SPECIFIED)		CHK'D: VK10 2019/01/15		DOCUMENT NUMBER	
▽ = 0	0	ANGULAR TOL ± 0.5°		APPR: RCHEN08 2019/01/15		745400100	
▽ = 0	0	4 PLACES ±		INITIAL REVISION:		DOC TYPE DOC PART REVISION	
▽ = 0	0	3 PLACES ±		DRWN: NMUTHARAYAPP 2018/12/13		PSD ASY R	
▽ = 0	0	2 PLACES ± 0.05		APPR: RCHEN08 2019/01/15		MATERIAL NUMBER CUSTOMER SHEET NUMBER	
▽ = 0	0	1 PLACE ± 0.1		THIRD ANGLE PROJECTION		SEE TABLE	
▽ = 0	0	0 PLACES ±		DRAWING SERIES		C-SIZE 74540	
▽ = 0	0	DRAFT WHERE APPLICABLE MUST REMAIN WITHIN DIMENSIONS		DRAWING SERIES		2 OF 4	

MOLEX P/N	DESCRIPTION	GEN
745400100	8x EMI Guide Housing Assembly - PCIe /1 Deg	Gen 1
745400200	8x EMI Guide Housing Assembly - ATCA /0 Deg	Gen 1
745400205	8x EMI Guide Housing Assembly - W/O Gasket - ATCA / 0 Deg	Gen 1

PCB THICKNESS	SCREW LENGTH	TORQUE(IN LBS)
1.6	5MM	2.3
2.38	6MM	2.3
3.2	6MM	2.3
	+4MM MAX	2.3

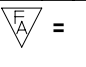
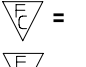
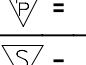
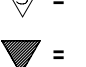
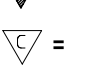
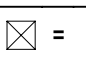

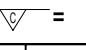



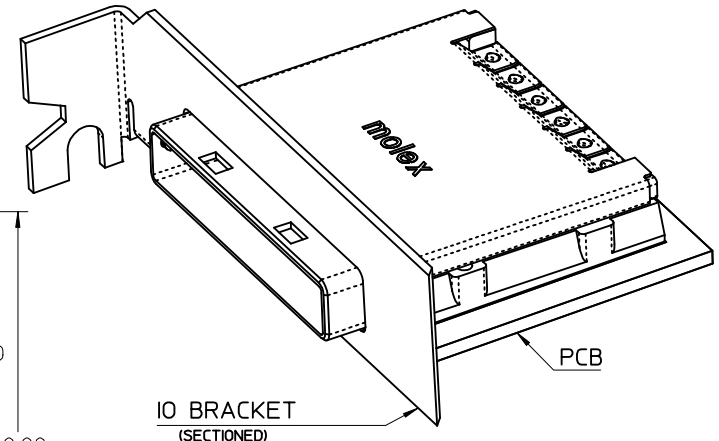
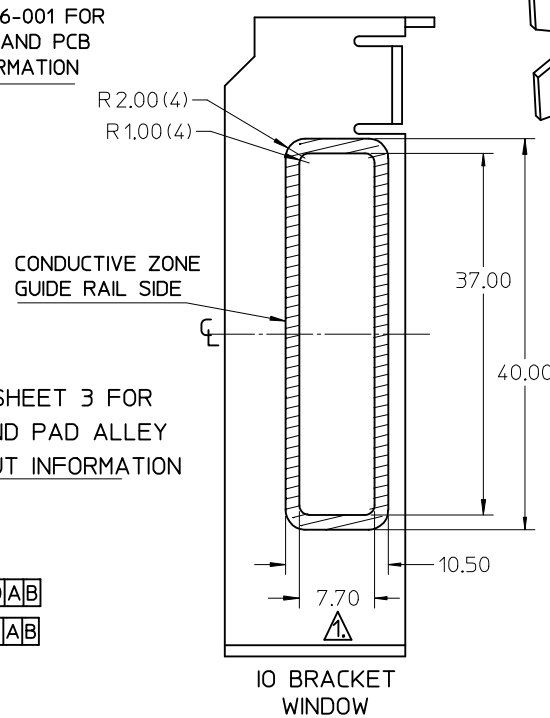
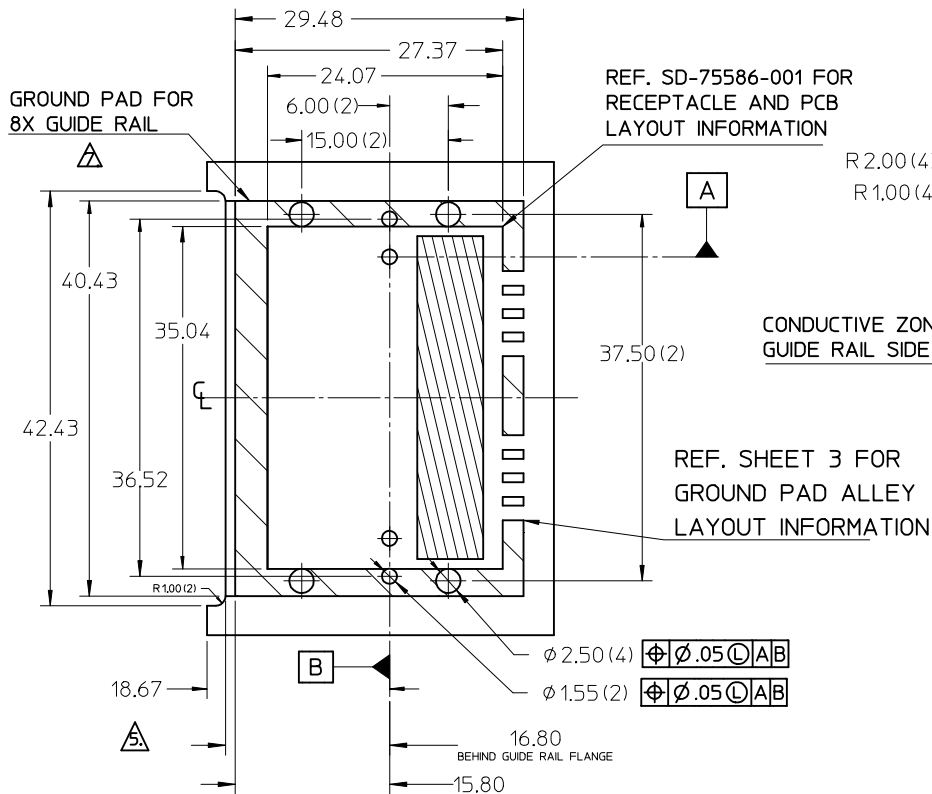
PARTIAL1  
SCALE 2:1  
GROUND PAD ALLEY  
LAYOUT INFORMATION



THIS DRAWING CONTAINS INFORMATION THAT IS PROPRIETARY TO MOLEX ELECTRONIC TECHNOLOGIES, LLC AND SHOULD NOT BE USED WITHOUT WRITTEN PERMISSION									
SYMBOLS	DIMENSION UNITS	SCALE	CURRENT REV DESC: SEE REVISION TABLE						
	mm	1:1	<b>molex</b> I-PASS X8 EMI GUIDE HOUSING ASSEMBLY PRODUCT CUSTOMER DRAWING						
	GENERAL TOLERANCES (UNLESS SPECIFIED)								
	ANGULAR TOL ± 0.5°		EC NO: 610421 DRWN: NMUTHARAYAPP 2018/12/13 CHK'D: VK10 2019/01/15 APPR: RCHEN08 2019/01/15						
	4 PLACES ±		INITIAL REVISION: DRWN: NMUTHARAYAPP 2018/12/13 APPR: RCHEN08 2019/01/15						
	3 PLACES ±								
	2 PLACES ± 0.05		DOCUMENT NUMBER		DOC TYPE	DOC PART	REVISION		
	1 PLACE ± 0.1		745400100		PSD	ASY	R		
	0 PLACES ±		MATERIAL NUMBER		CUSTOMER		SHEET NUMBER		
	DRAFT WHERE APPLICABLE MUST REMAIN WITHIN DIMENSIONS		SEE TABLE				3 OF 4		
	THIRD ANGLE PROJECTION		DRAWING		SERIES				
			C-SIZE		74540				

REV	DATE	DESCRIPTION
R	2019/01/15	1. REMASTERD FROM SD-74540-100 REV. Q TO 745400100 PSD ASY REV. R IN NX 2. SHEET 2: G10: ADDED TOP VIEW AND PLACED INK MARK IN TOP VIEW 3. SHEET 4: ADDED REVISION TABLE

<b>SYMBOLS</b>  = 0  = 0  = 0  = 0  = 0  = 0  = 0  = 0	THIS DRAWING CONTAINS INFORMATION THAT IS PROPRIETARY TO MOLEX ELECTRONIC TECHNOLOGIES, LLC AND SHOULD NOT BE USED WITHOUT WRITTEN PERMISSION		CURRENT REV DESC: SEE REVISION TABLE				 I-PASS X8 EMI GUIDE HOUSING ASSEMBLY		
	DIMENSION UNITS	SCALE	GENERAL TOLERANCES (UNLESS SPECIFIED)						
	mm	1:1	ANGULAR TOL ± 0.5°				DRWN: NMUTHARAYAPP 2018/12/13		
	4 PLACES ±		INITIAL REVISION:				CHK'D: VK10 2019/01/15		
	3 PLACES ±		DRWN: NMUTHARAYAPP 2018/12/13				APPR: RCHEN08 2019/01/15		
	2 PLACES ± 0.05		APPR: RCHEN08 2019/01/15				PRODUCT CUSTOMER DRAWING		
	1 PLACE ± 0.1		THIRD ANGLE PROJECTION				DOCUMENT NUMBER		
	0 PLACES ±		DRAWING				745400100		
	DRAFT WHERE APPLICABLE MUST REMAIN WITHIN DIMENSIONS		SERIES				DOC TYPE DOC PART REVISION		
			C-SIZE 74540				PSD ASY R		
		MATERIAL NUMBER				SEE TABLE			
		CUSTOMER				SHEET NUMBER			
						4 OF 4			



PCIe EXPANSION CARD APPLICATION SHOWN USING 1 DEGREE GUIDE HOUSING ASSEMBLY

- NOTES:
- REF. PCI EXPRESS CARD ELECTROMECHANICAL SPECIFICATION, REV 1.0a FOR IO BRACKET WINDOW LOCATION.
  - PCB AND IO BRACKET SHOWN FOR REFERENCE ONLY.
  - REFER TO SHEET 2 FOR ATCA GUIDE HOUSING ASSY. SEE SHEET 3 FOR SCREEN LENGTH + TORQUE SPEC.
  - GUIDE HOUSING MOUNTING THREAD= M2 X 0.4
  - PCB NOTCH IS SHOWN FOR PCI COMPLIANT BOARD.
  - THIS PRODUCT MEETS THE RESTRICTIONS OF HAZARDOUS SUBSTANCES IN ELECTRICAL AND ELECTRONIC EQUIPMENT (RoHS) DIRECTIVE (2002/95/EC)
  - PLATE GROUND PAD WITH EMERSON SILVER OR GOLD.
  - MATES WITH MOLEX 8X CABLE SERIES 74546-080X.
  - GUIDE HOUSING PEGS FOR ALIGNMENT ONLY. 'DO NOT SOLDER'

iPass™ is a trademark of Molex

I-PASS X8 EMI GUIDE HOUSING ASSEMBLY

MOLEX INCORPORATED

DOCUMENT NO. SD-74540-100

SHEET NO. 1 OF 3

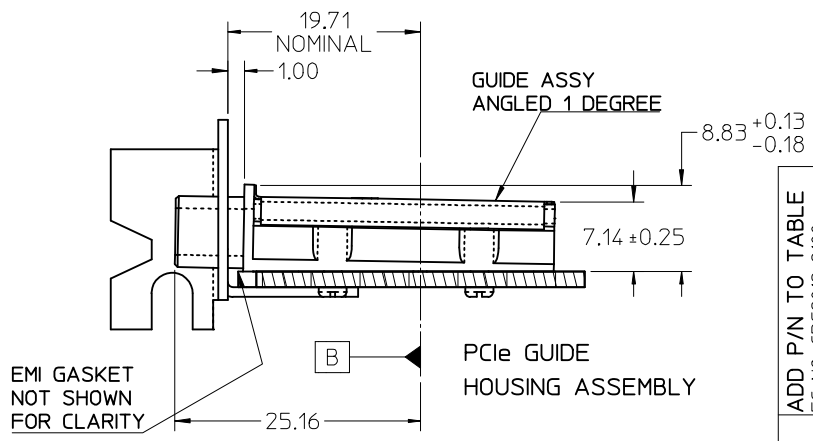
ADD P/N TO TABLE	EC NO: CPG2012-2100
	DRWN:TPRATT 2012/06/28
	CHKD:AJOHNSTON 2012/06/28
	APPR:KLLLOYD 2012/07/06
REV	DESCRIPTION

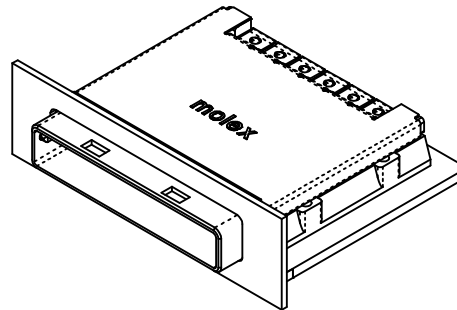
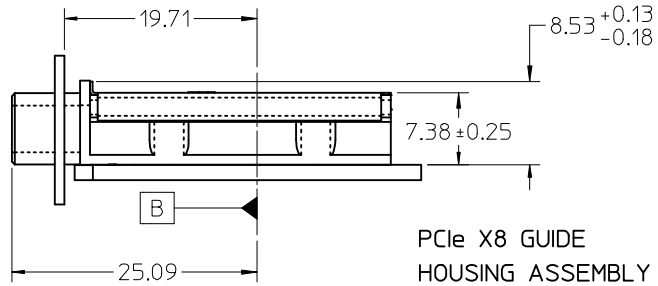
QUALITY SYMBOLS	▽=0
	▽=0

	GENERAL TOLERANCES (UNLESS SPECIFIED)	
	mm	INCH
4 PLACES	± ---	± ---
3 PLACES	± ---	± ---
2 PLACES	± 0.05	± ---
1 PLACE	± 0.10	± ---
ANGULAR		± 1/2°
DRAFT WHERE APPLICABLE MUST REMAIN WITHIN DIMENSIONS		

DIMENSION STYLE	
MM ONLY	
DRAWN BY	DATE
BREED	2004/11/11
CHECKED BY	DATE
DDOYE	2004/11/11
APPROVED BY	DATE
DDOYE	2004/11/11
MATERIAL NO.	SEE TABLE
SIZE	B

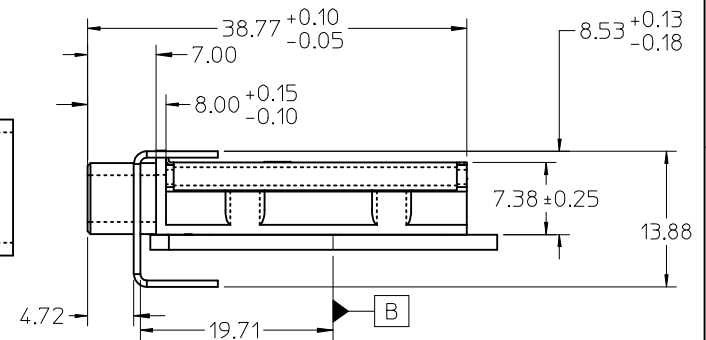
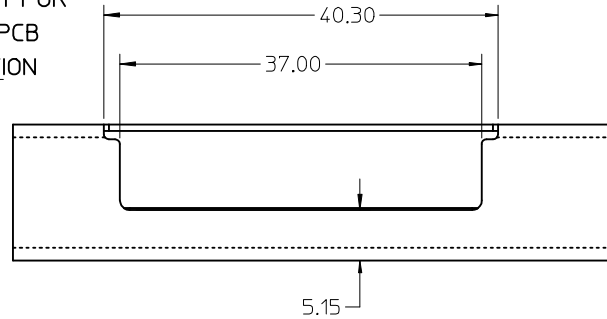
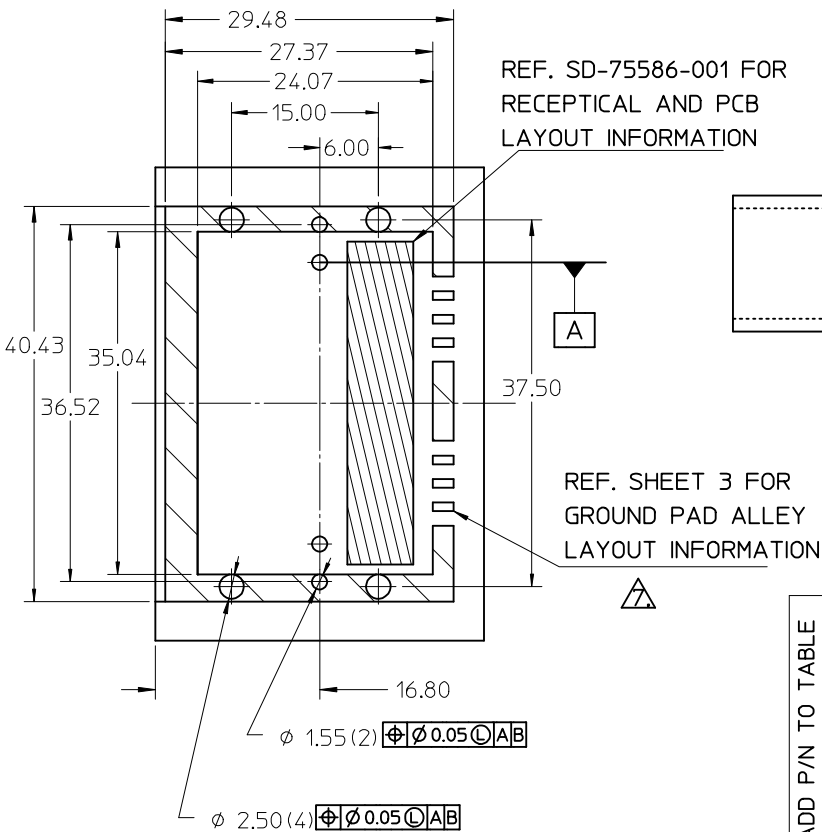
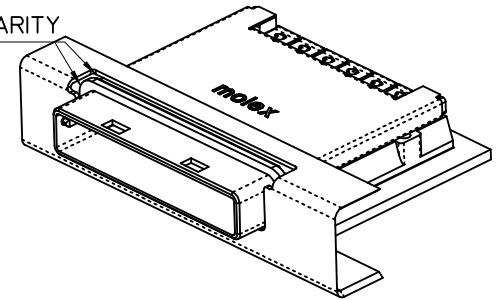
SCALE	2:1	DESIGN UNITS	METRIC	THIRD ANGLE PROJECTION
MOLEX INCORPORATED				
DOCUMENT NO. SD-74540-100				SHEET NO. 1 OF 3





STANDARD APPLICATION SHOWN USING 0 DEG GUIDE HOUSING ASSEMBLY

GASKETS NOT SHOWN FOR CLARITY

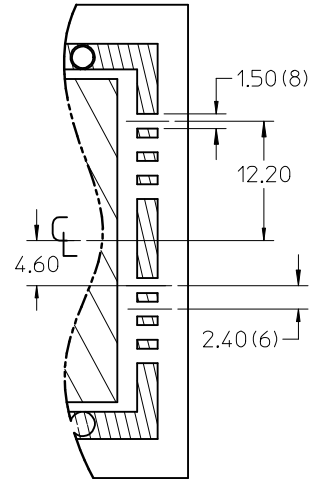


iPass™ is a trademark of Molex

ADD P/N TO TABLE EC NO: CPG2012-2100 DRAWN: TPRAATT 2012/06/28 CHKD: AJOHNSTON 2012/06/28 APPR: KLLOYD 2012/07/06	QUALITY SYMBOLS ▽=0 ▽=0	GENERAL TOLERANCES (UNLESS SPECIFIED)		DIMENSION STYLE		SCALE	DESIGN UNITS	THIRD ANGLE PROJECTION			
				MM ONLY		1:1	METRIC				
				mm	INCH	DRAWN BY	DATE	TITLE			
						BREED	2004/11/11	I-PASS X8 EMI GUIDE HOUSING ASSEMBLY			
				CHECKED BY	DATE	MATERIAL NO.					
				DDOYE	2004/11/11	DOCUMENT NO.		SHEET NO.			
				APPROVED BY	DATE	SD-74540-100		2 OF 3			
				DDOYE	2004/11/11	THIS DRAWING CONTAINS INFORMATION THAT IS PROPRIETARY TO MOLEX INCORPORATED AND SHOULD NOT BE USED WITHOUT WRITTEN PERMISSION					
				DRAFT WHERE APPLICABLE MUST REMAIN WITHIN DIMENSIONS		SEE TABLE					
				ANGULAR ±1/2°							

MOLEX P/N	DESCRIPTION	GEN
745400100	8x EMI Guide Housing Assembly - PCIe / 1 Deg	Gen 1
745400200	8x EMI Guide Housing Assembly - ATCA / 0 Deg	Gen 1
745400205	8x EMI Guide Housing Assembly - W/O Gasket - ATCA / 0 Deg	Gen 1

PCB THICKNESS	SCREW LENGTH	TORQUE (IN LBS)
1.6 (.063")	5MM	2.3
2.38 (.093")	6MM	2.3
3.2 (.125")	6MM	2.3
	+4MM MAX	2.3

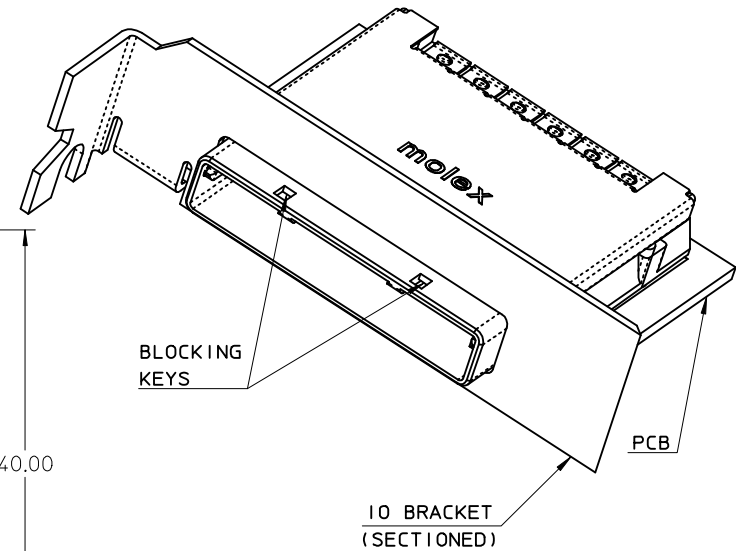
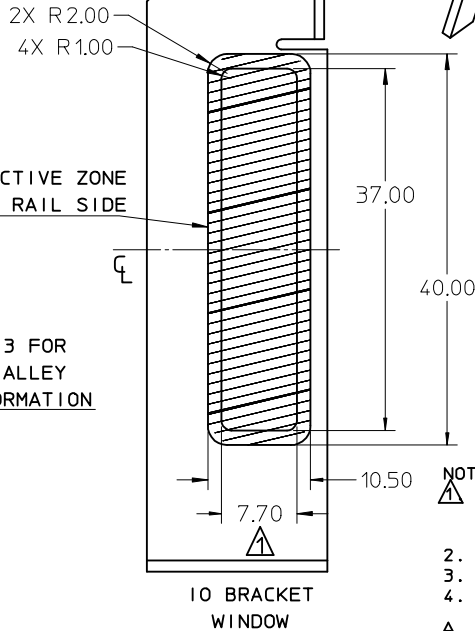
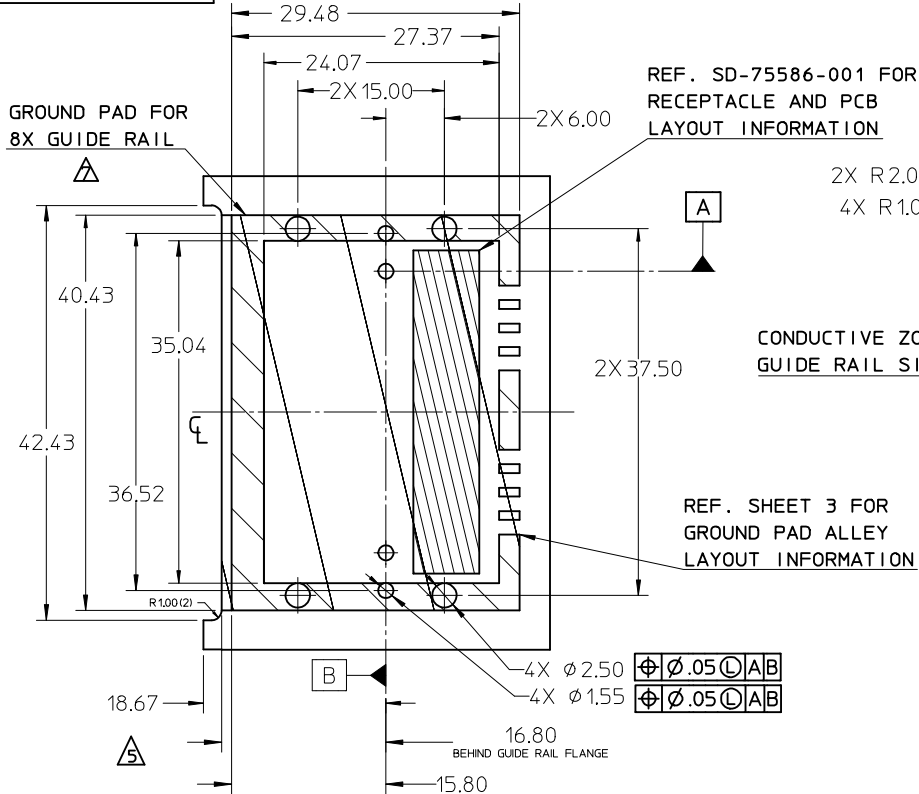


PARTIAL1  
SCALE 2:1  
GROUND PAD ALLEY  
LAYOUT INFORMATION



ADD P/N TO TABLE EC NO: CPG2012-2100 DRAWN: TPRAATT 2012/06/28 CHKD: A JOHNSTON 2012/06/28 APPR: K LLOYD 2012/07/06	QUALITY SYMBOLS ▽=0 ▽=0	GENERAL TOLERANCES (UNLESS SPECIFIED)		DIMENSION STYLE		SCALE	DESIGN UNITS	THIRD ANGLE PROJECTION			
				MM ONLY		1:1	METRIC				
				mm	INCH	DRAWN BY	DATE	TITLE			
				ANGULAR ±1/2°		BREED	2004/11/11	I-PASS X8 EMI GUIDE HOUSING ASSEMBLY			
		DRAFT WHERE APPLICABLE MUST REMAIN WITHIN DIMENSIONS		CHECKED BY	DATE	MOLEX INCORPORATED					
				DDOYE	2004/11/11					DOCUMENT NO. SD-74540-100 SHEET NO. 3 OF 3	
				APPROVED BY	DATE	THIS DRAWING CONTAINS INFORMATION THAT IS PROPRIETARY TO MOLEX INCORPORATED AND SHOULD NOT BE USED WITHOUT WRITTEN PERMISSION					
				DDOYE	2004/11/11						
				MATERIAL NO.							
				SEE TABLE							
				SIZE B							

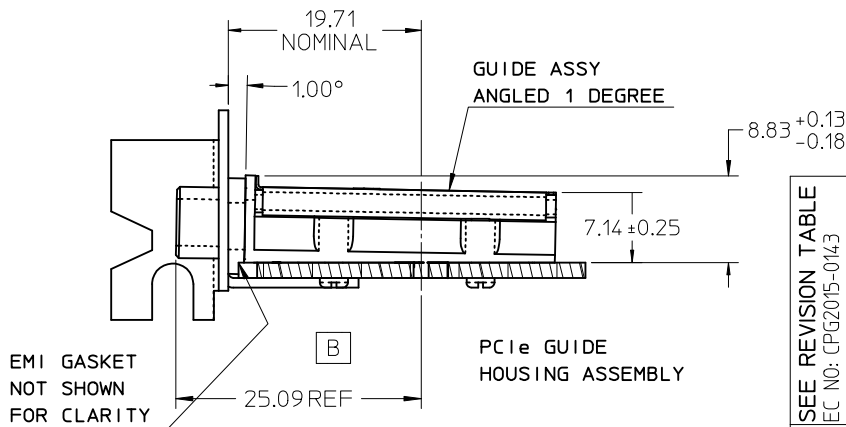
MM : TM-74540-0206



PCIe EXPANSION CARD APPLICATION SHOWN USING 1 DEGREE GUIDE HOUSING ASSEMBLY

- NOTES:
- REF. PCI EXPRESS CARD ELECTROMECHANICAL SPECIFICATION, REV 1.0a FOR 10 BRACKET WINDOW LOCATION.
  - PCB AND 10 BRACKET SHOWN FOR REFERENCE ONLY.
  - REFER TO SHEET 2 FOR ATCA GUIDE HOUSING ASSY.
  - GUIDE HOUSING MOUNTING THREAD= M2 X 0.4, SEE SHEET 3 FOR SCREW LENGTH + TORQUE SPEC.
  - PCB NOTCH IS SHOWN FOR PCI COMPLIANT BOARD.
  - THIS PRODUCT MEETS THE RESTRICTION OF HAZARDOUS SUBSTANCES IN ELECTRICAL AND ELECTRONIC EQUIPMENT (RoHS) DIRECTIVE (2002/95/EC).
  - PLATE GROUND PAD WITH EMERSION SILVER OR GOLD.
  - MATES WITH MOLEX 8X CABLE SERIES 74546-080X.
  - GUIDE HOUSING PEGS FOR ALIGNMENT ONLY, DO NOT SOLDER.
  - MATERIAL: NI PLATED ZINC DIECAST.

iPass™ is a trademark of Molex



SEE REVISION TABLE

EC NO: CPG2015-0143	2014/07/11
DRW:HEMANG07	2014/07/14
CHKD:SYANG16	2014/07/14
APPR:RCHEN08	2014/07/28

QUALITY SYMBOLS	DESCRIPTION
▽=0	
▽=0	
▽=0	

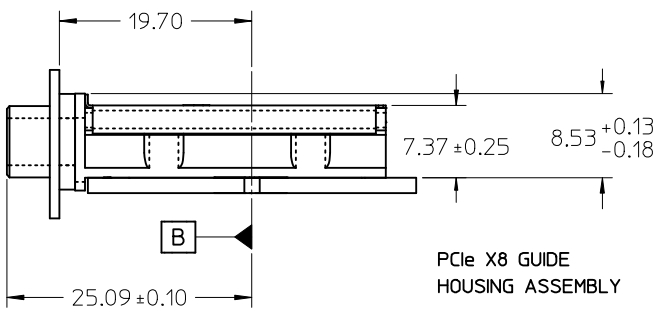
GENERAL TOLERANCES (UNLESS SPECIFIED)	
	mm INCH
4 PLACES	± --- ± ---
3 PLACES	± --- ± ---
2 PLACES	± 0.05 ± ---
1 PLACE	± 0.10 ± ---
0 PLACE	± ±
ANGULAR ± 1/2°	
DRAFT WHERE APPLICABLE MUST REMAIN WITHIN DIMENSIONS	

DIMENSION STYLE	
MM ONLY	
DRAWN BY	DATE
JERWIN	2006/05/25
CHECKED BY	DATE
BREED	2006/05/25
APPROVED BY	DATE
DDOYE	2006/05/25

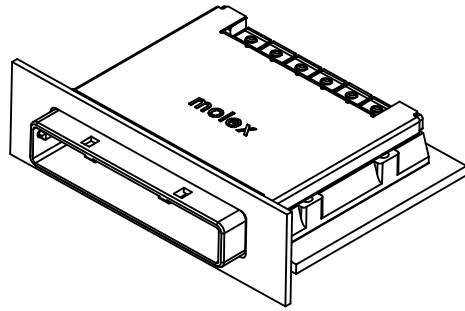
SCALE	DESIGN UNITS	THIRD ANGLE PROJECTION
2:1	METRIC	☉
TITLE		
I-PASS X8 EMI GUIDE HOUSING ASSEMBLY W/ KEYS		
molex		
MATERIAL NO.	DOCUMENT NO.	SHEET NO.
SEE P/N TABLE	SD-74540-101	1 OF 4



10 9 8 7 6 5 4 3 2 1

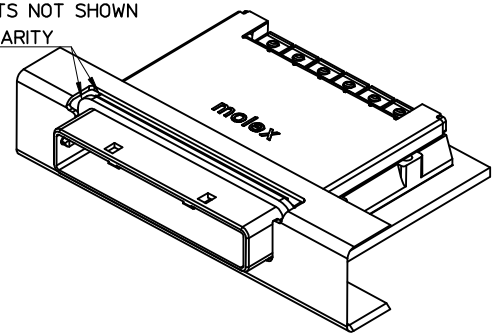


PCIe X8 GUIDE HOUSING ASSEMBLY

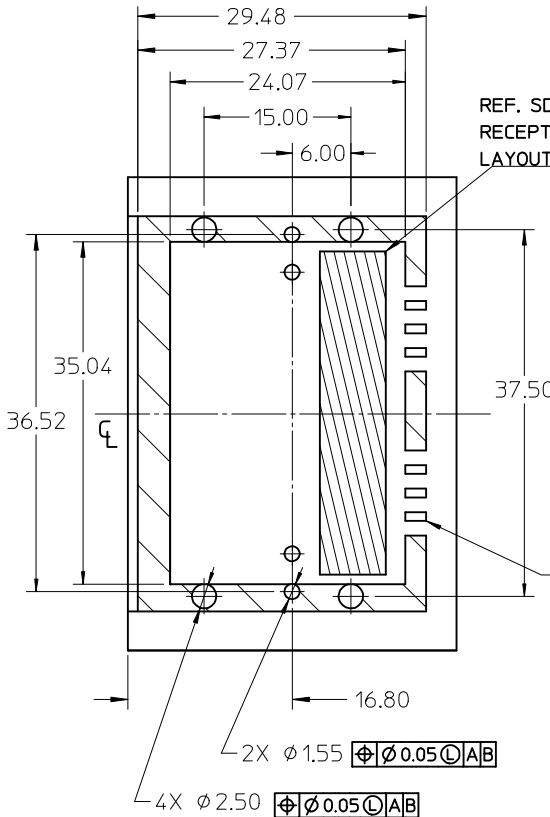


STANDARD APPLICATION SHOWN USING 0 DEG GUIDE HOUSING ASSEMBLY

GASKETS NOT SHOWN FOR CLARITY

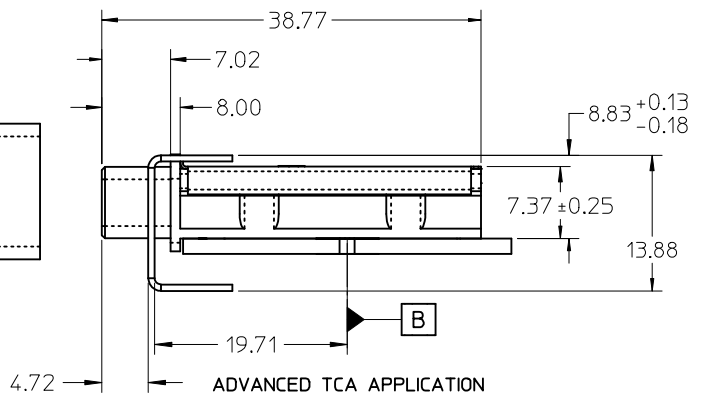
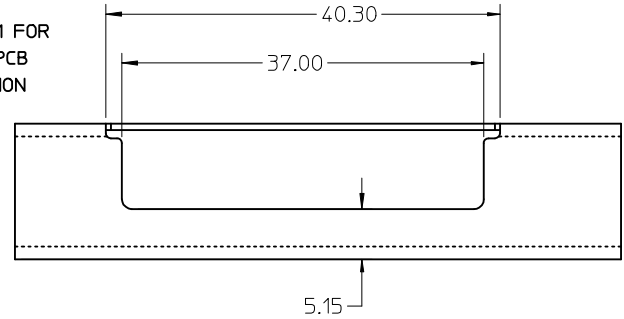


ADVANCED TCA APPLICATION USING 0 DEG GUIDE HOUSING ASSEMBLY



REF. SD-75586-001 FOR RECEPTAL AND PCB LAYOUT INFORMATION

REF. SHEET 3 FOR GROUND PAD ALLEY LAYOUT INFORMATION



iPass™ is a trademark of Molex

SEE REVISION TABLE

EC NO: CPG2015-0143	2014/07/11
DRW:NEWANG07	2014/07/14
CHKD:SYANG16	2014/07/28
APPR:RCHEN08	

REV	DESCRIPTION
1	QUALITY SYMBOLS
2	QUALITY SYMBOLS
3	QUALITY SYMBOLS

GENERAL TOLERANCES (UNLESS SPECIFIED)	
	mm
4 PLACES	± 0.10
3 PLACES	± 0.05
2 PLACES	± 0.05
1 PLACE	± 0.10
0 PLACE	± 0.10
ANGULAR ± 1/2°	
DRAFT WHERE APPLICABLE MUST REMAIN WITHIN DIMENSIONS	

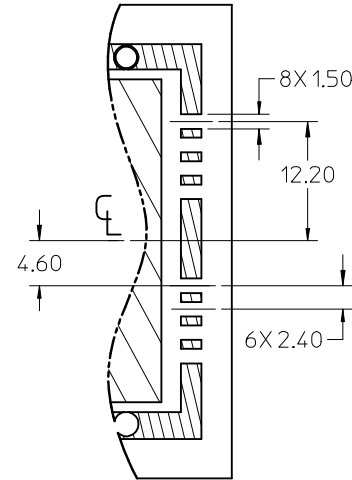
DIMENSION STYLE	
MM ONLY	
DRAWN BY	DATE
JERWIN	2006/05/25
CHECKED BY	DATE
BREED	2006/05/25
APPROVED BY	DATE
DDOYE	2006/05/25
MATERIAL NO.	
SEE P/N TABLE	

SCALE	DESIGN UNITS	THIRD ANGLE PROJECTION
2:1	METRIC	THIRD ANGLE PROJECTION
TITLE		
I-PASS X8 EMI GUIDE HOUSING ASSEMBLY W/ KEYS		
<b>molex</b>		
DOCUMENT NO.	SHEET NO.	
SD-74540-101	2 OF 4	

9 8 7 6 5 4 3 2 1

MOLEX P/N	DESCRIPTION	GEN
745400101	8x EMI Guide Housing Assembly - PCIe / 1 Deg	Gen 1
745400201	8x EMI Guide Housing Assembly - ATCA / 0 Deg	Gen 1

PCB THICKNESS	SCREW LENGTH	TORQUE (IN LBS)
1.6 (.063")	5MM	2.3
2.38 (.093")	6MM	2.3
3.2 (.125")	6MM	2.3
X	+4MM MAX	2.3



GROUND PAD ALLEY  
LAYOUT INFORMATION



SEE REVISION TABLE EC NO: CPG2015-0143 DRAWN BY: DRWAHEWANG07 2014/07/11 CHKD: SYANG16 2014/07/14 APPR: RCHEN08 2014/07/28	QUALITY SYMBOLS F=0 F=0 F=0	GENERAL TOLERANCES (UNLESS SPECIFIED)		DIMENSION STYLE MM ONLY		SCALE 2:1	DESIGN UNITS METRIC	THIRD ANGLE PROJECTION		
			mm	INCH	DRAWN BY JERWIN	DATE 2006/05/25	TITLE I-PASS X8 EMI GUIDE HOUSING ASSEMBLY W/ KEYS <b>molex</b>			
		4 PLACES	± ---	± ---	CHECKED BY BREED	DATE 2006/05/25				
		3 PLACES	± ---	± ---	APPROVED BY DDOYE	DATE 2006/05/25	DOCUMENT NO. SD-74540-101		SHEET NO. 3 OF 4	
2 PLACES	± 0.05	± ---	MATERIAL NO. SEE P/N TABLE		THIS DRAWING CONTAINS INFORMATION THAT IS PROPRIETARY TO MOLEX INCORPORATED AND SHOULD NOT BE USED WITHOUT WRITTEN PERMISSION					
1 PLACE	± 0.10	± ---	DRAFT WHERE APPLICABLE MUST REMAIN WITHIN DIMENSIONS							
0 PLACE	±	±	ANGULAR ± 1/2°							

REVISION HISTORY

DATE (YEAR/MONTH/DAY)	REV	DESCRIPTION
2013/12/18	H	1. ADDED NOTES 10. MATERIAL: Ni PLATED ZINC DIECAST. [SHT 1] 2. CHANGED W/ NEW MOLEX FORMAT
2014/07/11	J	1. CHANGED 25.16 TO 25.09REF TO MEET PCI EXPRESS EXTERNAL CABLING SPECIFICATION @A9 [SHEET 1] 2. ADDED MM 3D NO. @F10 [SHEET 1] 3. THE MOLEX CHARACTER FIGURE UPDATE @F2 [SHEET 1], @F2 F5 [SHEET 2] 4. CHANGED 25.09 TO 25.09+/-0.1 @E9 [SHEET 2]

SEE REVISION TABLE EC NO: CPG2015-0143 DRW: NEWANG07 2014/07/11 CHKD: SYANG16 2014/07/14 APPR: RCHEN08 2014/07/28	QUALITY SYMBOLS	GENERAL TOLERANCES (UNLESS SPECIFIED)	DIMENSION STYLE	SCALE	DESIGN UNITS	THIRD ANGLE PROJECTION
	▽F/0	mm INCH	MM ONLY	1:1	METRIC	
	▽F/0	4 PLACES ± --- ± ---	DRAWN BY DATE	TITLE I-PASS X8 EMI GUIDE HOUSING ASSEMBLY W/ KEYS		
	▽F/0	3 PLACES ± --- ± ---	JERWIN 2006/05/25			
	▽F/0	2 PLACES ± 0.05 ± ---	CHECKED BY DATE	DOCUMENT NO. SD-74540-101 SHEET NO. 4 OF 4		
▽F/0	1 PLACE ± 0.10 ± ---	BREED 2006/05/25				
▽F/0	0 PLACE ± ±	APPROVED BY DATE	MATERIAL NO. THIS DRAWING CONTAINS INFORMATION THAT IS PROPRIETARY TO MOLEX INCORPORATED AND SHOULD NOT BE USED WITHOUT WRITTEN PERMISSION			
	ANGULAR ±1/2°	DDOYE 2006/05/25				
	DRAFT WHERE APPLICABLE MUST REMAIN WITHIN DIMENSIONS	SEE P/N TABLE				