

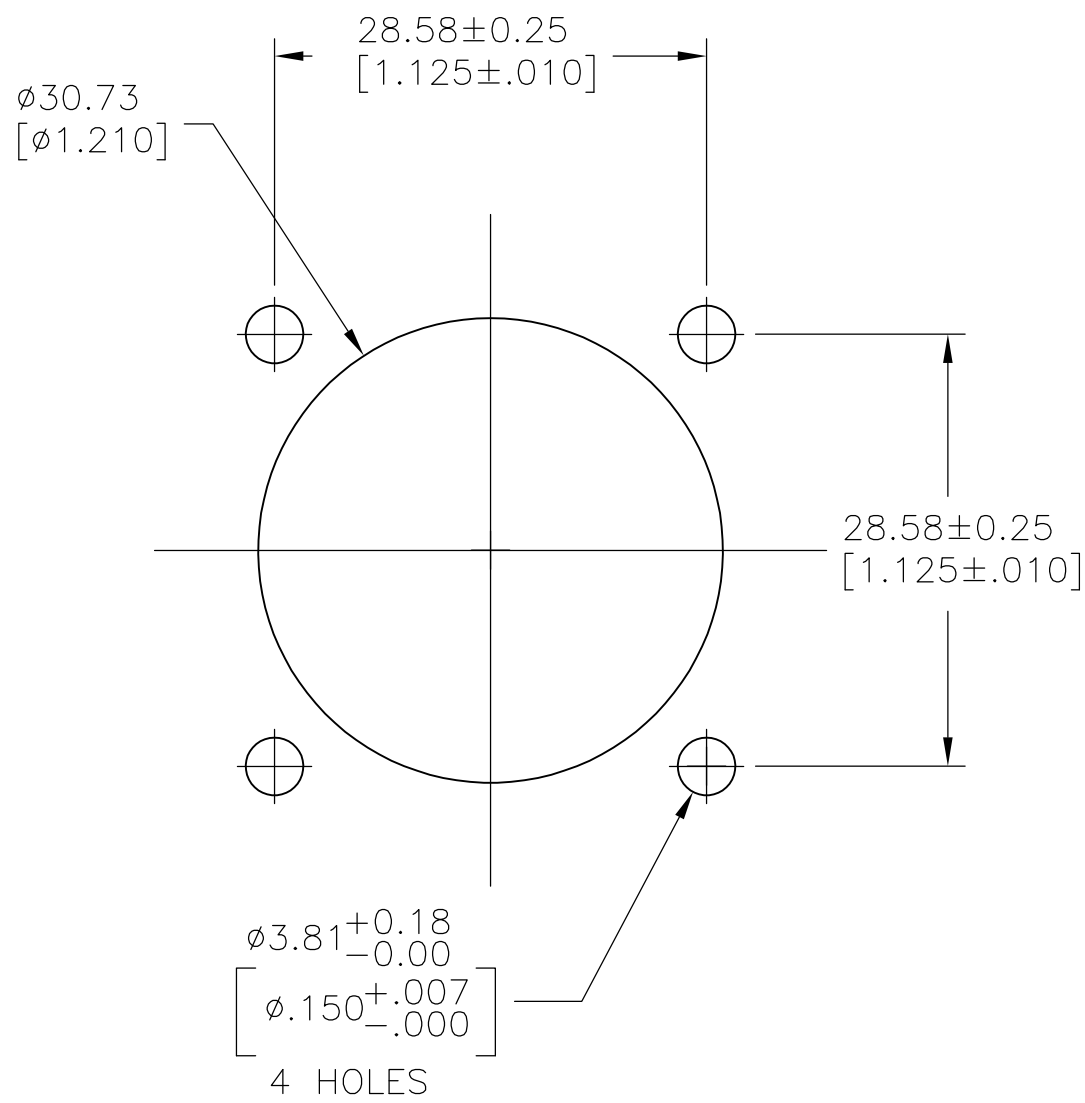
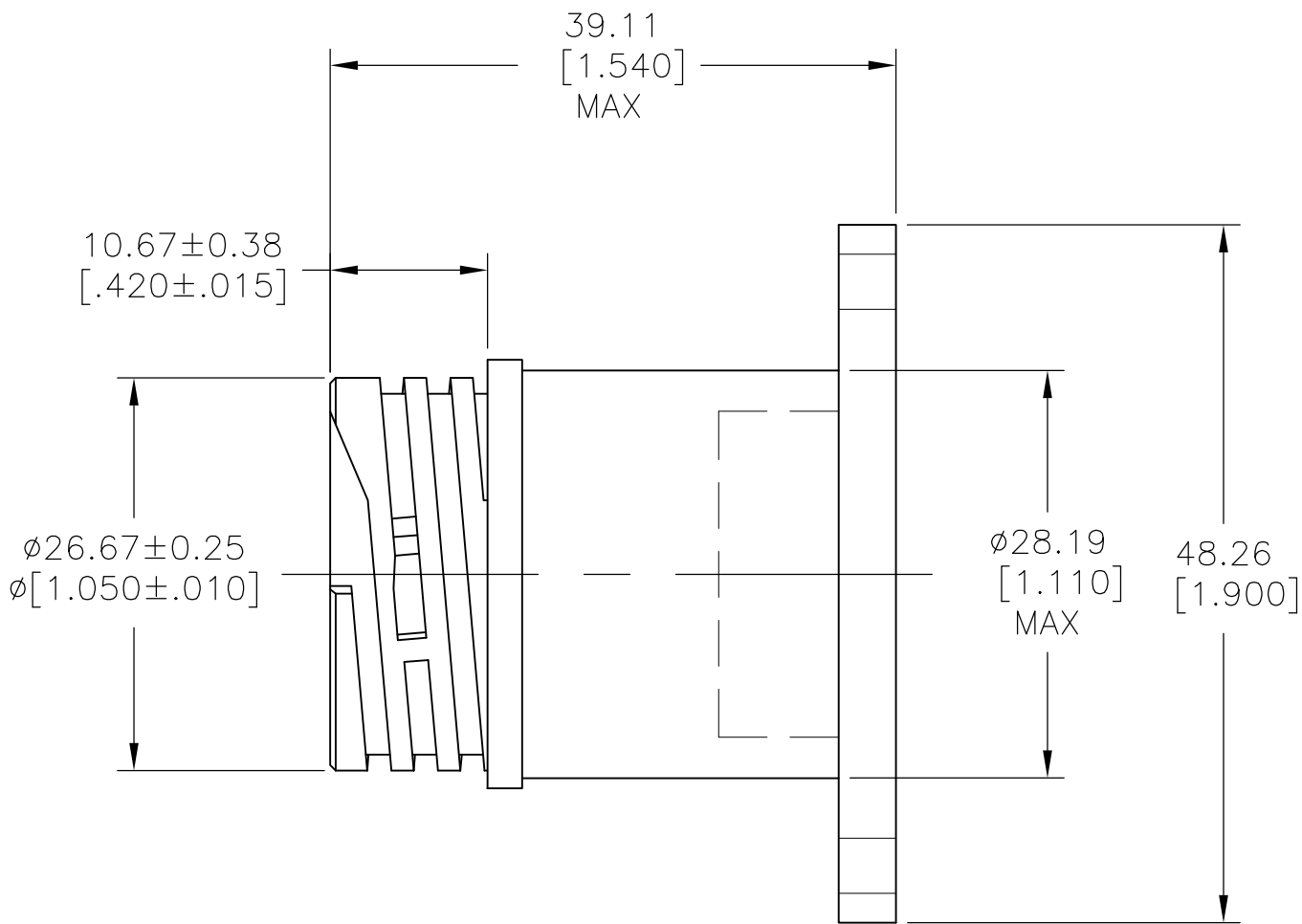
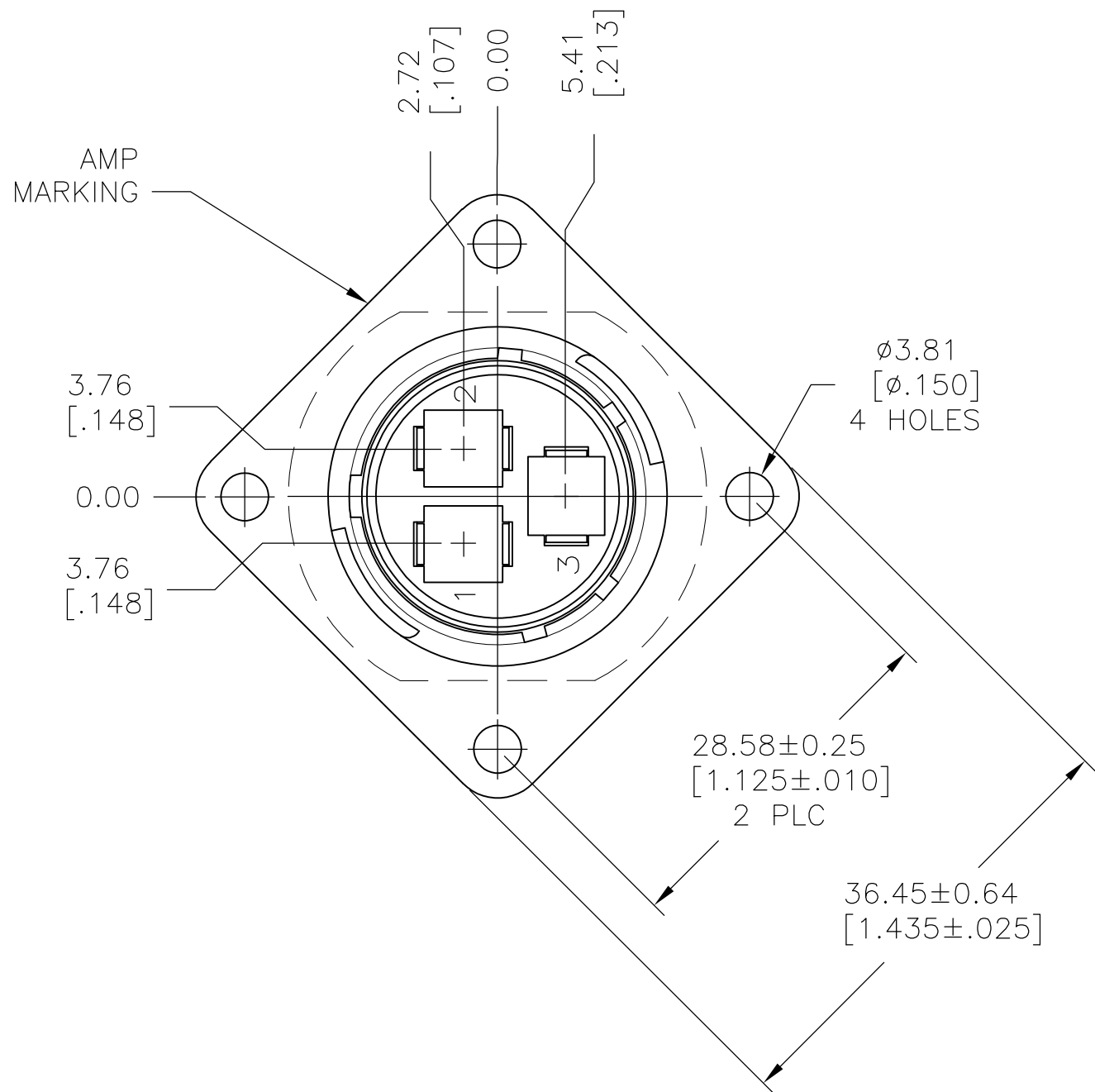
THIS DRAWING IS UNPUBLISHED.

RELEASED FOR PUBLICATION

© COPYRIGHT BY TYCO ELECTRONICS CORPORATION. ALL INTERNATIONAL RIGHTS RESERVED.

LOC	DIST	REVISIONS					
		P	LTR	DESCRIPTION	DATE	DWN	APVD
BD	35		A1	REVISED PER ECO-09-018998	18AUG09	HMR	MS

- 1 CAVITY IDENTIFICATION ON FRONT AND REAR FACE.
- 2 WILL ACCEPT THREE (3) TYPE XII PIN CONTACTS.



RECOMMENDED PANEL CUTOUT

1986519-1

PART NO

THIS DRAWING IS A CONTROLLED DOCUMENT.		DWN	12FEB09	Tyco Electronics Corporation Harrisburg, PA 17105-3608			
		CHK	12FEB09				
DIMENSIONS: mm [INCHES]	TOLERANCES UNLESS OTHERWISE SPECIFIED:	APVD	12FEB09	NAME EXTENDED CPC RECEPTACLE ASSY SIZE 17-3			
		PRODUCT SPEC					
	0 PLC ± - 1 PLC ± - 2 PLC ± 0.13 [.005] 3 PLC ± - 4 PLC ± - ANGLES ± -	APPLICATION SPEC		SIZE	CAGE CODE	DRAWING NO	RESTRICTED TO
				A2	00779	C=1986519	-
MATERIAL	FINISH	WEIGHT		SCALE		SHEET	REV
NYLON, BLACK	-	CUSTOMER DRAWING		2:1		1 of 1	A1

Mouser Electronics

Authorized Distributor

Click to View Pricing, Inventory, Delivery & Lifecycle Information:

[TE Connectivity:](#)

[1986519-1](#)