

1. MATERIAL:
OUTER SHELL: COPPER ALLOY
BACK SHELL: STEEL
INNER SHELL: COPPER ALLOY
CONTACTS: COPPER ALLOY
PLASTIC MOLDINGS: THERMOPLASTIC, COLOR: BLACK

PLATED DEPOSITS TO CONFORM TO THE REQUIREMENTS OF IEEE1394B:

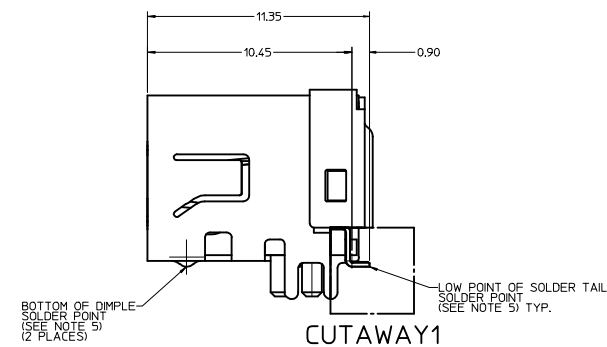
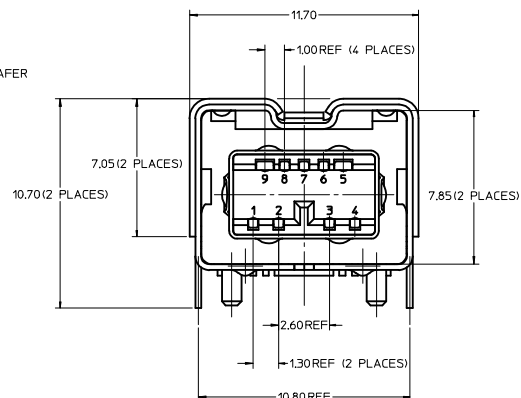
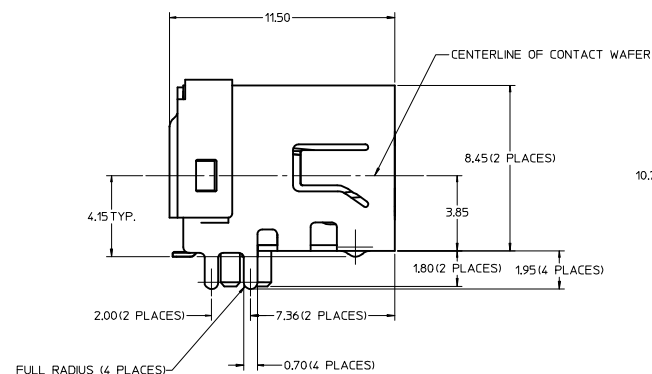
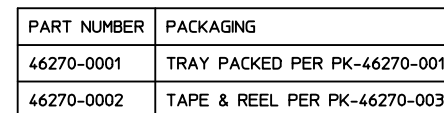
*OUTER SHELL: EXCEPTION: 0.00076 MIN. PLATABLE NICKEL (NICKEL SULFATE) OVER 0.00305 MIN. COPPER
*BACK SHELL: EXCEPTION: 0.00076 MIN. PLATABLE NICKEL (NICKEL SULFATE) OVER 0.00305 MIN. COPPER
*INNER SHELL: EXCEPTION: 0.00076 MIN. PLATABLE NICKEL (NICKEL SULFATE) OVER 0.00305 MIN. COPPER
*CONTACTS: 0.00076 MIN. SELECT GOLD AND 0.00305 MIN. SELECT TIN OVER 0.00127 MIN. NICKEL OVERALL

3. PRODUCT SPECIFICATION: PS-45240-001

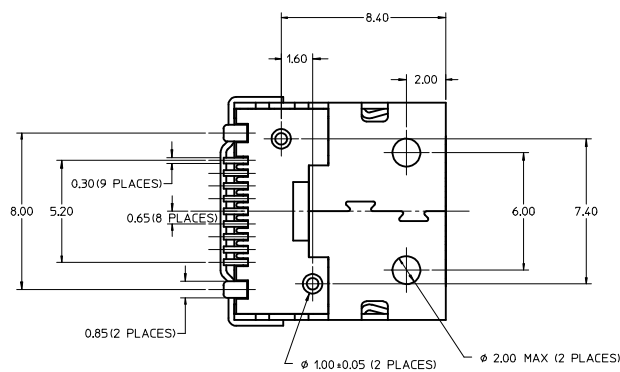
4. PACKAGING: SEE CHART



5. COPLANARITY OF SOLDER POINTS = 0.10mm TOTAL.

6. THE KEYING PEGS ONLY DISTINGUISH THIS BILINGUAL SOCKET FROM A BETA SOCKET. THE KEYING PEGS AND THE FOUR THRU-HOLE SOLDER TAILS DO NOT ALIGN THE SOCKET TO THE PCB FOOTPRINT WITH SUFFICIENT PRECISION TO ASSURE CORRECT SOLDERING.



BILINGUAL



ADD TAPE & REEL EC NO.: UC27009-2151 DRAWING PER 2009/04/03 CHKD32503/SEK 2009/04/05 APPR32511/TH 2009/04/15	QUALITY SYMBOLS ▽=0 ▽=0	GENERAL TOLERANCES (UNLESS SPECIFIED)	DIMENSION STYLE		SCALE		DESIGN UNITS	TRIMD ANGLE PROJECTION			
			MM ONLY		8:1		METRIC	 THIRD ANGLE PROJECTION			
			DRAWN BY DATE		TITLE		BILINGUAL SOCKET ASS'Y RIGHT ANGLE THRU HOLE				
			PELOZA 2006/08/02								
REV	DESCRIPTION	4 PLACES ±.mm ±.INCH 3 PLACES ±.mm ±.INCH 2 PLACES ±.05 ±.INCH 1 PLACE ±.025 ±.INCH ANGULAR ±1/2°	CHECKED BY DATE		DATE		 MOLEX MOLEX INCORPORATED				
			PELOZA 2006/08/02								
			APPROVED BY DATE		DOCUMENT NO.		SHEET NO. 1 OF 1				
			COMERC I 2006/08/02		SD-46270-001						
DRAFT WHERE APPLICABLE MUST REMAIN WITHIN DIMENSIONS			MATERIAL NO.		SEE CHART						
			SIZE		THIS DRAWING CONTAINS INFORMATION THAT IS PROPRIETARY TO MOLEX INCORPORATED AND SHOULD NOT BE USED WITHOUT WRITTEN PERMISSION						

NOTES:

1. MATERIAL:

OUTER SHELL: COPPER ALLOY
BACK SHELL: STEEL
INNER SHELL: COPPER ALLOY
CONTACTS: COPPER ALLOY
PLASTIC MOLDINGS: THERMOPLASTIC, COLOR: BLACK

2. FINISH:

PLATED DEPOSITS TO CONFORM TO THE REQUIREMENTS OF IEEE1394B:

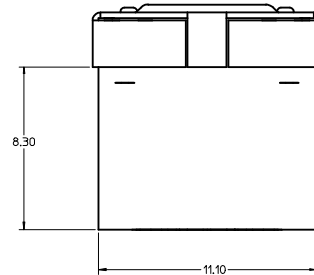
■ OUTER SHELL: EXCEPTION: 0.00076 MIN. PLATABLE NICKEL (NICKEL SULFATE) OVER 0.00305 MIN. COPPER
■ BACK SHELL: EXCEPTION: 0.00076 MIN. PLATABLE NICKEL (NICKEL SULFATE) OVER 0.00305 MIN. COPPER
■ INNER SHELL: EXCEPTION: 0.00076 MIN. PLATABLE NICKEL (NICKEL SULFATE) OVER 0.00305 MIN. COPPER
■ CONTACTS: 0.00076 MIN. SELECT GOLD AND 0.00305 MIN. SELECT TIN OVER 0.00127 MIN. NICKEL OVERALL

3. PRODUCT SPECIFICATION: PS-45240-001

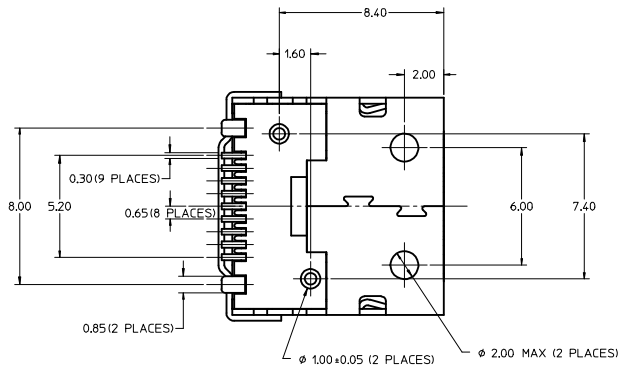
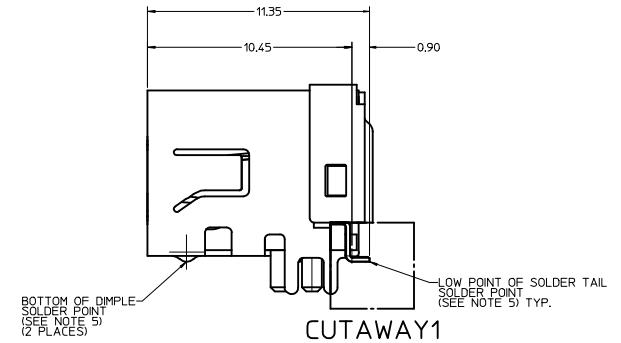
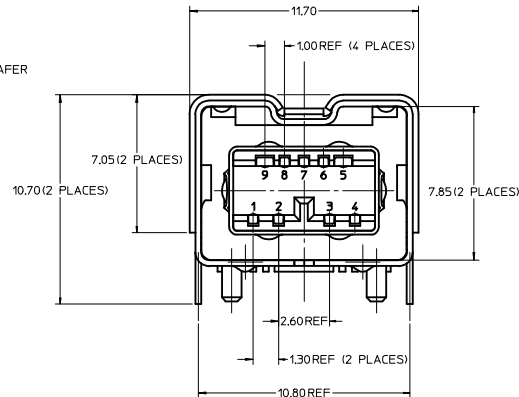
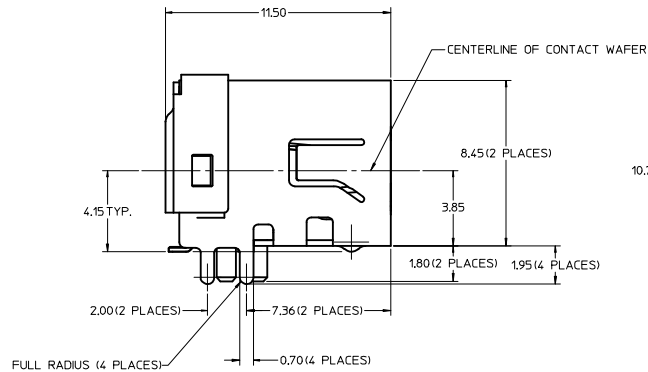
4. PACKAGING: SEE CHART

5. COPLANARITY OF SOLDER POINTS = 0.10mm TOTAL.

6. THE KEYING PEGS ONLY DISTINGUISH THIS BILINGUAL SOCKET FROM A BETA SOCKET. THE KEYING PEGS AND THE FOUR THRU-HOLE SOLDER TAILS DO NOT ALIGN THE SOCKET TO THE PCB FOOTPRINT WITH SUFFICIENT PRECISION TO ASSURE CORRECT SOLDERING.



PART NUMBER	PACKAGING
46270-0001	TRAY PACKED PER PK-46270-001
46270-0002	TAPE & REEL PER PK-46270-003



BILINGUAL

ADD TAPE & REEL EC NO.: UCP2009-2451 DRAWN BY: CHYKSSOUSEK CHECKED BY: APPR:FSM TH 2009/06/03 2009/06/05 2009/06/15	QUALITY SYMBOLS ▽=0 ▽=0	GENERAL TOLERANCES (UNLESS SPECIFIED)		DIMENSION STYLE MM ONLY		SCALE 8:1	DESIGN UNITS METRIC	THIRD ANGLE PROJECTION	
				DRAWN BY DATE PELOZA 2006/08/02		TITLE BILINGUAL SOCKET ASS'Y			
				CHECKED BY DATE PELOZA 2006/08/02		RIGHT ANGLE			
				APPROVED BY DATE COMERC I 2006/08/02		THRU HOLE			
				MOLEX INCORPORATED					
				MATERIAL NO. SEE CHART		DOCUMENT NO. SD-46270-001		SHEET NO. 1 OF 1	
				SIZE D		THIS DRAWING CONTAINS INFORMATION THAT IS PROPRIETARY TO MOLEX INCORPORATED AND SHOULD NOT BE USED WITHOUT WRITTEN PERMISSION			
				DRAFT WHERE APPLICABLE MUST REMAIN WITHIN DIMENSIONS					

Mouser Electronics

Authorized Distributor

Click to View Pricing, Inventory, Delivery & Lifecycle Information:

Molex:

46270-0001