

REV.	DATE	ECR NO	DESCRIPTION
A	11/24/10	--	RELEASE TO MFG.

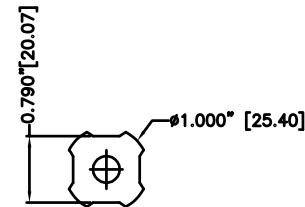
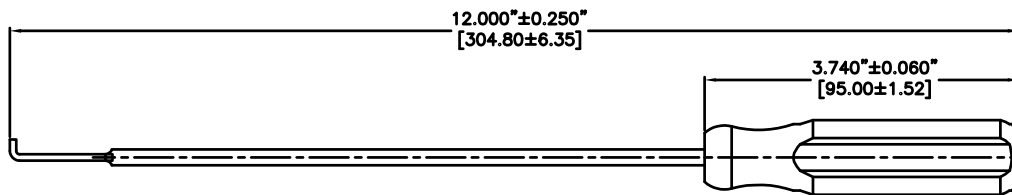
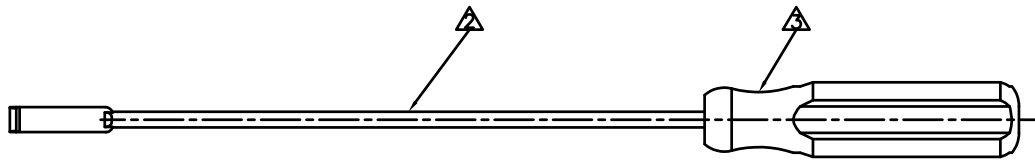
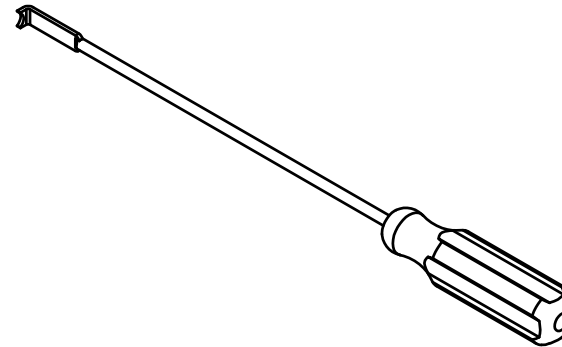
NOTES: UNLESS OTHERWISE SPECIFIED

1. PARTS TO BE FREE OF BURRS AND SHARP EDGES.

⚠ METAL COMPONENTS TO BE CLEAR ZINC PLATED.

⚠ HANDLE TO BE TRANSLUCENT RED PLASTIC.

4. DIMENSIONS IN [ ] ARE IN MILLIMETERS.



				UNLESS OTHERWISE SPECIFIED DIMENSIONS ARE IN INCHES. DIMENSIONS IN [ ] ARE IN MILLIMETERS AND FOR CUSTOMER REFERENCE ONLY.	APPROVALS	DATE	<b>Amphenol Connex</b>							
				UNLESS OTHERWISE SPECIFIED TOLERANCES FOR MILLIMETERS ARE: 0.5 - 8mm ± 0.20mm 8 - 30mm ± 0.40mm 30 - 120mm ± 0.50mm	DRAWN	CLEMENT					11/24/10	PART DESCRIPTION		
				UNLESS OTHERWISE SPECIFIED TOLERANCES FOR INCHES ARE: .020 - .315 = ± 0.007" .315 - 1.180 = ± 0.015" 1.180 - 4.724 = ± 0.020"	CHECKED			1.0/2.3 REMOVAL TOOL						
				DO NOT SCALE DRAWING	ISSUED			PART NO.						
					SHEET	1 OF 1		47019						
DESCRIPTION	MATERIAL	FINISH	QTY		CAD FILE	C:/470/47019.DWG	DWG. NO.	47019.DWG	REV.	A	SIZE	A	SCALE	NA

# Mouser Electronics

Authorized Distributor

Click to View Pricing, Inventory, Delivery & Lifecycle Information:

[Amphenol:](#)

[47019](#)