
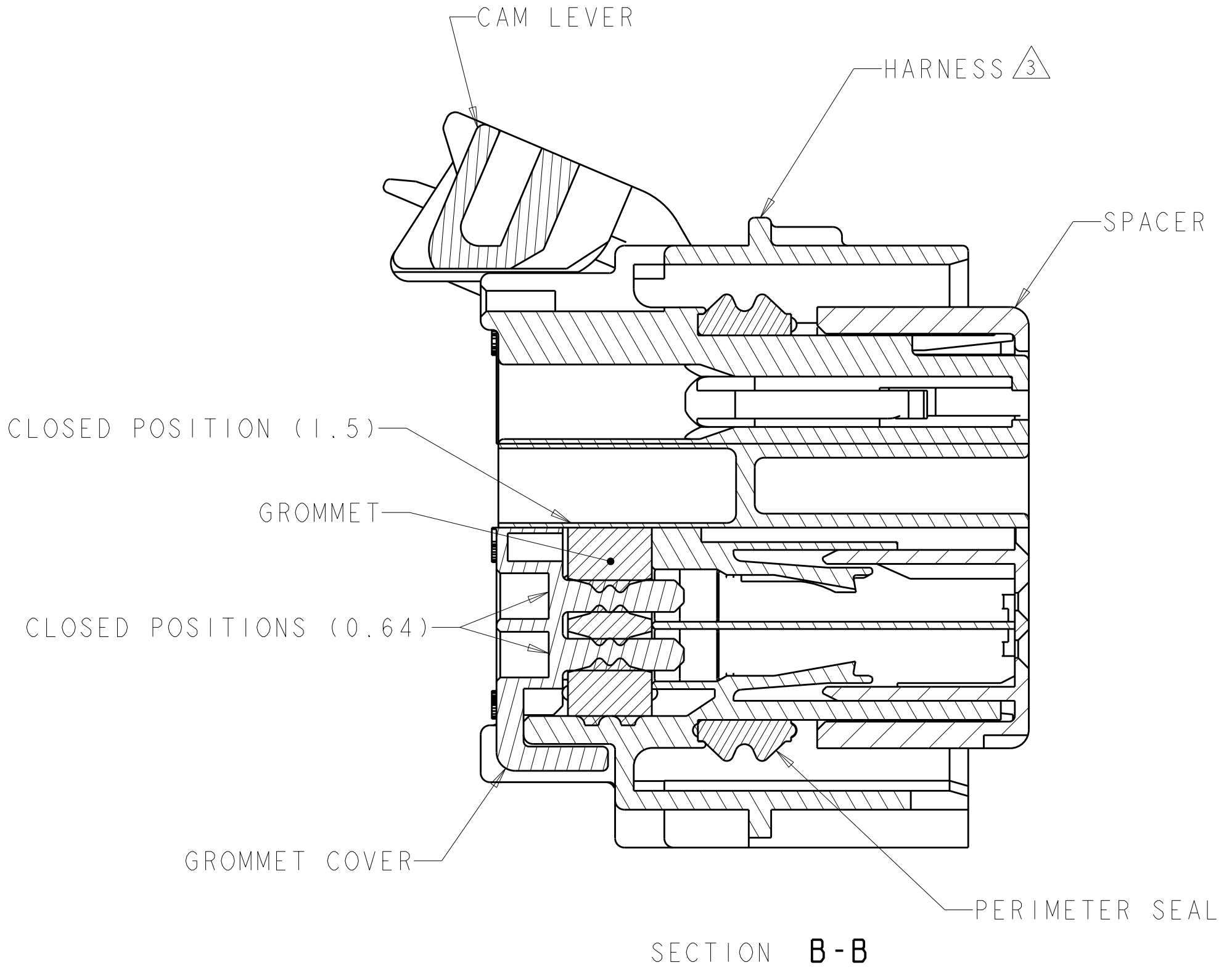
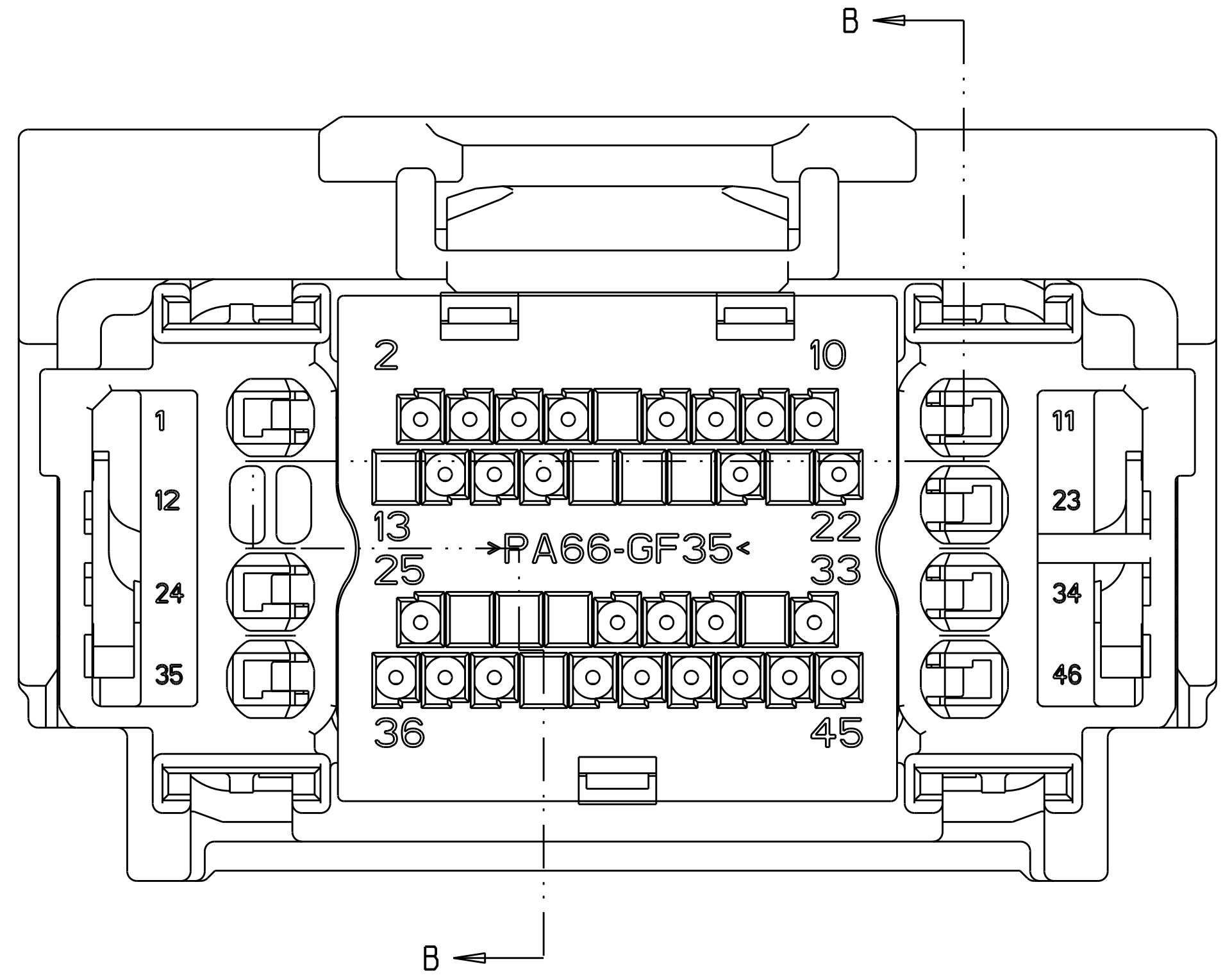
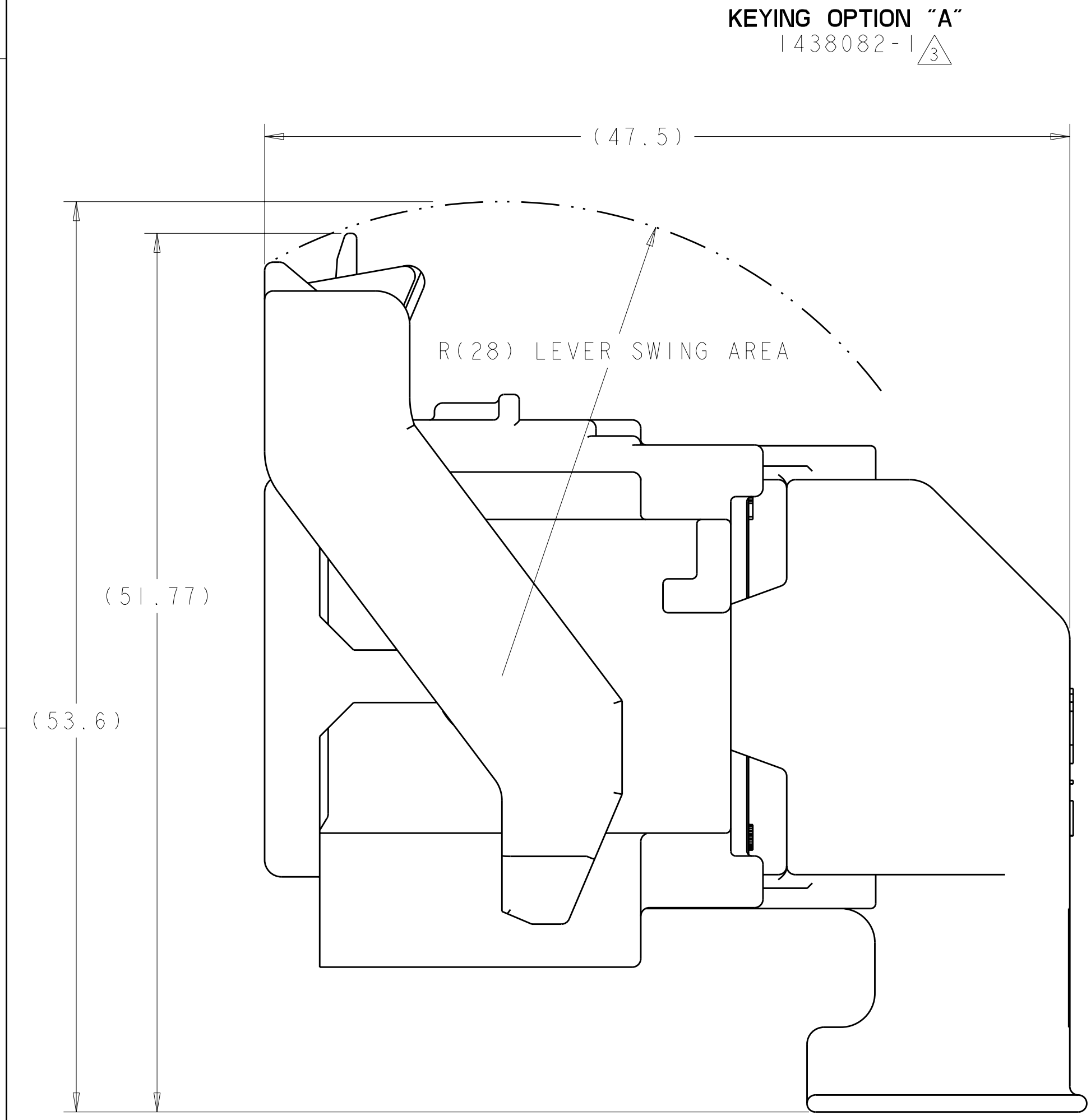


SCALE 1 : 1

KEYING OPTION "B"
1438082-2 




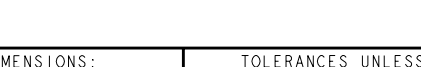
△ MATERIAL:
HARNES - 35% GLASS FILLED PA66, BLACK
ALT MAT'L: HARNES - 30% GLASS FILLED sPS, BLACK
SPACER - 40% GLASS FILLED PPS+PA66, RED
ALT MAT'L: 30% GLASS FILLED sPS, RED
ALT MAT'L: 35% GLASS FILLED PA66, RED
COVER - 35% GLASS FILLED PA66, BLACK
ALT MAT'L: COVER - 30% GLASS FILLED LCP, BLACK
CAM LEVER - 35% GLASS FILLED NYLON, GRAY
GROMMET - SILICONE, BROWN
PERIMETER SEAL - SILICONE, GREEN

2. CAM LEVER AND SPACER ARE SHIPPED IN PRE-LATCH POSITION.

③ SEE PINOUT CHART ON SHEETS 2, 3 AND 4 FOR CLOSED CIRCUIT CONFIGURATIONS.

④ CAVITIES WITH A NUMERIC SYMBOL INDICATES CLOSED TERMINAL LOCATIONS.
BLANK CAVITIES INDICATE OPEN TERMINAL HOLE LOCATIONS.

SHOWN WITH CAM LEVER AND SPACER
IN LOADED POSITION WITH
OPTIONAL WIRESHIELD

<small>THIS DRAWING IS A CONTROLLED DOCUMENT FOR Tyco Electronics Corporation IT IS SUBJECT TO A CHANGE ORDER AND THE CREATING ORGANIZATION SHOULD BE CONTACTED FOR THE LATEST REVISION.</small>		DWN: 01AUG2003 R. VESTAL ECH: 01AUG2003 D. STRAUSSER APD: 01AUG2003 D. STRAUSSER		 Tyco Electronics Harrisburg, PA 17105-3608	
DIMENSIONS: mm		TOLERANCES UNLESS OTHERWISE SPECIFIED:		NAME:	
		0 PLC ±. 1 PLC ±0.3 2 PLC ±0.10 3 PLC ±. 4 PLC ±. ANGLES ±°		PRODUCT SPEC: - APPLICATION SPEC: -	
MATERIAL: SEE TABLE		FINISH: SEE TABLE		46 Way PCM CONNECTOR HARNESS ASSEMBLY	
		WEIGHT: -		SIZE: CAGE CODE: DRAWING NO: RESTRICTED TO:	
		A 00779 C = 1438082		-	
CUSTOMER DRAWING				SCALE: 4:1 SHEET 1 OF 5 REV: 1	

Mouser Electronics

Authorized Distributor

Click to View Pricing, Inventory, Delivery & Lifecycle Information:

[TE Connectivity:](#)

[3-1438082-3](#)