

# Printed-circuit board connector - DFK-IPC 35 HC/ 4-GF-15,00 - 1784981

Please be informed that the data shown in this PDF Document is generated from our Online Catalog. Please find the complete data in the user's documentation. Our General Terms of Use for Downloads are valid (<http://phoenixcontact.com/download>)

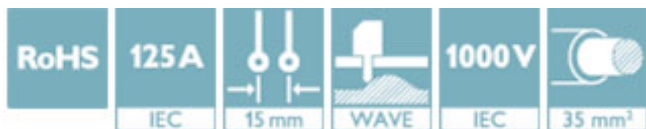
Feed-through header, nominal current: 125 A, rated voltage (III/2): 1000 V, number of positions: 4, pitch: 15 mm, color: green, contact surface: Silver, mounting: Wave soldering



The figure shows a 5-pos. version of the product

## Why buy this product

- Well-known mounting principle allows worldwide use
- Double flange for space-optimized screw connection on the housing panel and with the connector
- Inverted header with socket contacts for touch-proof device outputs or PCB/PCB connections
- Integrated double steel spring provides additional safety in the event of temperature and power fluctuations



## Key Commercial Data

|              |               |
|--------------|---------------|
| Packing unit | 25 pc         |
| GTIN         |               |
| GTIN         | 4046356561297 |

## Technical data

### Dimensions

|                       |         |
|-----------------------|---------|
| Length [ l ]          | 44.9 mm |
| Width                 | 92.4 mm |
| Pitch                 | 15 mm   |
| Dimension a           | 45 mm   |
| Width [ w ]           | 92.4 mm |
| Height [ h ]          | 31.7 mm |
| Constructional height | 31.7 mm |
| Length                | 44.9 mm |

### General

|                           |                     |
|---------------------------|---------------------|
| Range of articles         | DFK-IPC 35 HC/..-GF |
| Insulating material group | IIIa                |

# Printed-circuit board connector - DFK-IPC 35 HC/ 4-GF-15,00 - 1784981

## Technical data

### General

|  |        |
|--|--------|
| Rated surge voltage (III/3)            | 8 kV   |
| Rated surge voltage (III/2)            | 8 kV   |
| Rated surge voltage (II/2)             | 8 kV   |
| Rated voltage (III/3)                  | 1000 V |
| Rated voltage (III/2)                  | 1000 V |
| Rated voltage (II/2)                   | 1000 V |
| Connection in acc. with standard       | EN-VDE |
| Nominal current $I_N$                  | 125 A  |
| Maximum load current                   | 125 A  |
| Insulating material                    | PBT    |
| Flammability rating according to UL 94 | V0     |
| Color                                  | green  |
| Number of positions                    | 4      |

### Standards and Regulations

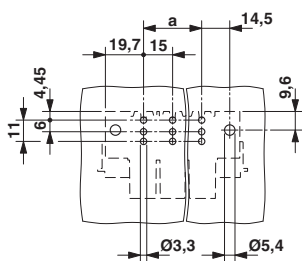
|  |        |
|--|--------|
| Connection in acc. with standard       | EN-VDE |
|  | UL     |
| Flammability rating according to UL 94 | V0     |

### Environmental Product Compliance

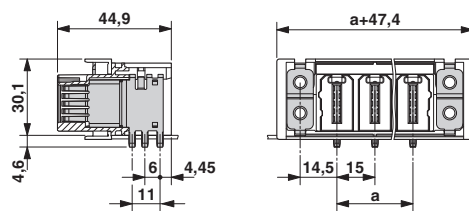
|            |   |
|------------|---|
| China RoHS | Environmentally friendly use period: unlimited = EFUP-e |
|            | No hazardous substances above threshold values          |

## Drawings

Drilling diagram

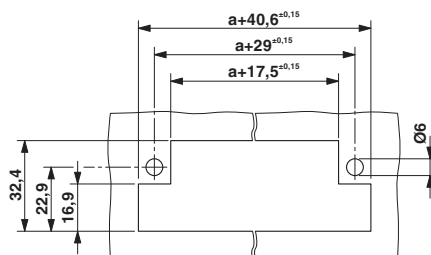


Dimensional drawing



# Printed-circuit board connector - DFK-IPC 35 HC/ 4-GF-15,00 - 1784981

Dimensional drawing



## Approvals

### Approvals

#### Approvals

CCA / IECCE CB Scheme / VDE Gutachten mit Fertigungsüberwachung / EAC / UL Recognized

#### Ex Approvals

### Approval details

|     |                |
|-----|----------------|
| CCA | CCA/ DE1 34354 |
|-----|----------------|


|                    |        |   |              |
|--------------------|--------|---|--------------|
| IECEE CB Scheme    |        | <a href="http://www.iecee.org/">http://www.iecee.org/</a> | CB DE1-60040 |
| Nominal voltage UN | 1000 V |   |              |
| Nominal current IN | 125 A  |   |              |

|   |        |   |          |
|---|--------|---|----------|
| VDE Gutachten mit Fertigungsüberwachung |        | <a href="http://www2.vde.com/de/Institut/Online-Service/VDE-gepruefteProdukte/Seiten/Online-Suche.aspx">http://www2.vde.com/de/Institut/Online-Service/VDE-gepruefteProdukte/Seiten/Online-Suche.aspx</a> | 40039053 |
| Nominal voltage UN                      | 1000 V |   |          |
| Nominal current IN                      | 125 A  |   |          |

|     |  |         |
|-----|--|---------|
| EAC |  | B.01742 |
|-----|--|---------|

# Printed-circuit board connector - DFK-IPC 35 HC/ 4-GF-15,00 - 1784981

## Approvals

|                    |   |   |                 |
|--------------------|---|---|-----------------|
| UL Recognized      |  | <a href="http://database.ul.com/cgi-bin/XYV/template/LISEXT/1FRAME/index.htm">http://database.ul.com/cgi-bin/XYV/template/LISEXT/1FRAME/index.htm</a> | E60425-20101007 |
|                    | B   | C   |                 |
| Nominal voltage UN | 600 V   | 600 V   |                 |
| Nominal current IN | 115 A   | 115 A   |                 |

Phoenix Contact 2018 © - all rights reserved  
<http://www.phoenixcontact.com>

PHOENIX CONTACT GmbH & Co. KG  
Flachsmarktstr. 8  
32825 Blomberg  
Germany  
Tel. +49 5235 300  
Fax +49 5235 3 41200  
<http://www.phoenixcontact.com>

# Mouser Electronics

Authorized Distributor

Click to View Pricing, Inventory, Delivery & Lifecycle Information:

[Phoenix Contact:](#)

[1784981](#)