

4

3

2

1

THIS DRAWING IS UNPUBLISHED.

RELEASED FOR PUBLICATION

© COPYRIGHT

ALL RIGHTS RESERVED.

LOC

DIST

REVISIONS

P	LTR	DESCRIPTION	DATE	DWN	APVD
	A1	ECR-14-005483	15MAY2014	GK	HMR

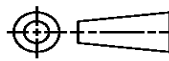
REPLACED BY OCEAN STYLE APPLICATOR PART
NUMBER 2150085-2

FOR REPLACEMENT PARTS FOR APPLICATOR 1855353
REFER TO ADDITIONAL PAGE(S). SPARE PARTS KIT (IF LISTED)
WILL REMAIN AVAILABLE.

THE REPLACEMENT OCEAN STYLE APPLICATOR HAS THE
SAME TERMINATOR/PRESS INTERFACE AS APPLICATOR
1855353

THIS DRAWING IS A CONTROLLED DOCUMENT.		DWN	GOPALAKRISHNA HV			
		CHK	RAGHAVENDRA			
		APVD	RAGHAVENDRA			
		PRODUCT SPEC				
		APPLICATION SPEC				
		WEIGHT				
		CUSTOMER DRAWING		SCALE	SHEET 1 OF 2	
				REV	A1	

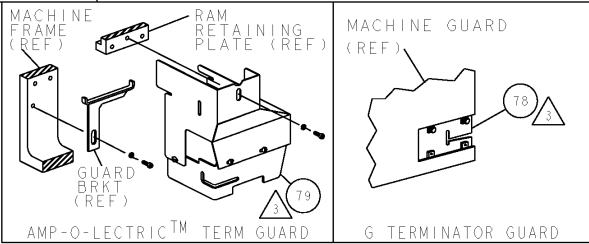
TE Connectivity	
NAME	
FINE ADJUST END FEED HDM APPLICATOR	
SIZE	CAGE CODE
DRAWING NO	RESTRICTED TO
A3	©- 1855353

DIMENSIONS:	TOLERANCES UNLESS OTHERWISE SPECIFIED:
	0 PLC ±
	1 PLC ±
	2 PLC ±
	3 PLC ±
	4 PLC ±
ANGLES ±	
MATERIAL	FINISH

PART NUMBER		REV	FIRST USED	POWER UNIT	FEED TYPE
1855353-1		A	122500-1	LEADMAKER & BENCH MODEL G	POST FEED
1855353-2		A	565435-5	BENCH MODEL K	POST FEED
7-1855353-7		A	-	SPARE PARTS	-

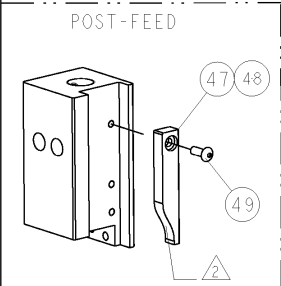
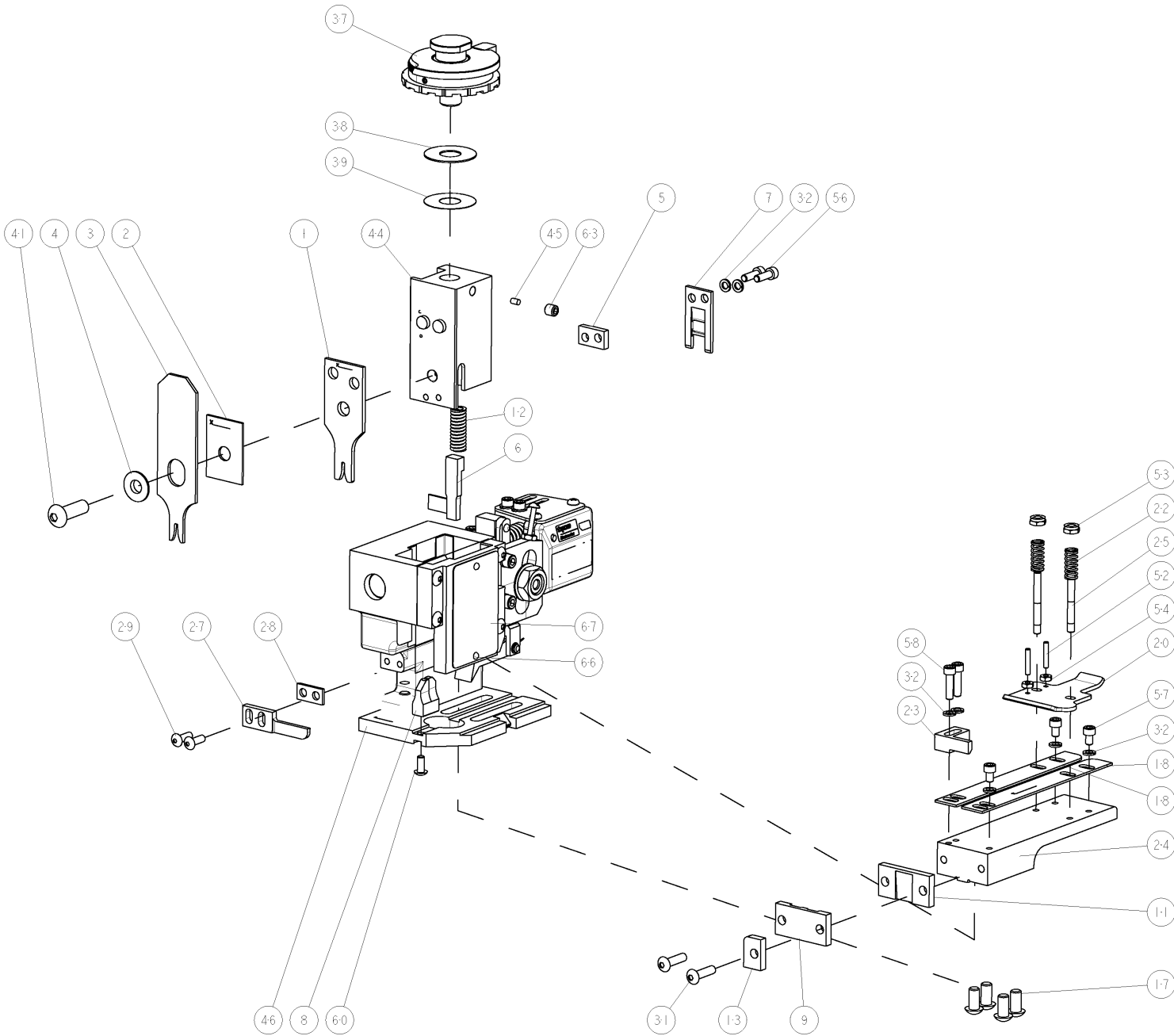
- 1 RECOMMENDED SPARE PARTS
2 GREASE LIGHTLY
3 GUARD MUST BE IN PLACE WHEN OPERATING APPLICATOR IN A BENCH MACHINE

***WARNING:**
ON INSTALLATION, SET WIRE DISC TO LARGEST WIRE SIZE SETTING. USE OF SETTINGS BELOW MIN REQUIRED CRIMP HEIGHT SETTING WILL CAUSE DAMAGE TO CRIMP TOOLING.



TERMINAL NAME: 110 SERIES POSITIVE LOCK REC CONYACT					
TE PN		TE TERMINAL - TE CRIMP SPECS		REF SETTING*	
175411		CRIMP HEIGHT		WIRE SIZE	
-		1.02±0.05mm[.040±.002]		20AWG or 0.5mm2	
-		.91±0.05mm[.036±.002]		22AWG or 0.3mm2	
-		.84±0.05mm[.033±.002]		24AWG or 0.2mm2	
-		-		-	
CRIMP		SIZE	TYPE	RANGE	
-		WIRE	1.57mm [.062]	F	
-		INSUL	2.29mm [.090]	F	
-		WIRE STRIP LENGTH	3.5-4.5mm	TERM APPL SPEC	
-		FEED	18.9mm	APPL INSTRUCTIONS	
-		SET UP GAGE	458638-1	-	

LOC		DIST		REVISIONS			
A		66		REV	DESCRIPTION	DATE	OWN
-		-		1	DEVELOPMENT	12042007	C,C
-		-		A	RELEASED	03JAN2008	MEH



REF	REV	LOC	DIST	REV	DESCRIPTION	DATE	OWN
-	-	REF	...	455745-1	GUARD WINDOW	79	
-	-	REF	...	679532-1	INSERT, GUARD	78	
-	1	1	-	217238-1	GENERAL INSTRUCTION PKG	72	
-	1	1	-	4088039	EF APPL INST 408-8039	71	
-	1	1	-	461264-5	PLATE, IDENTIFICATION	67	
-	2	2	-	21017-2	SCREW, DRIVE	66	
-	1	1	-	21009-2	SCR, SET, SELF LOCKING 1/4-20 X .250	63	
-	1	1	-	22733-8	SCR, BHSC, SELF-LOCKING, 8-32 X .375	60	
-	2	2	-	2-21000-8	SCR, SKT HD CAP 8-32 X .625	58	
-	3	3	-	2-21000-5	SCR, SKT HD CAP 8-32 X .250	57	
-	2	2	-	2-21000-7	SCR, SKT HD CAP 8-32 X .500	56	
-	2	2	-	21018-4	NUT, HEX, REG 4-40	54	
-	2	2	-	21022-2	NUT, LOCK, HEX, TORQUE, 8-32	53	
-	2	2	-	2-21006-6	SCR, SET, CUP POINT 4-40 X .625	52	
-	1	1	...	1-21002-7	SCR, BTN SKT CAP 6-32 X .375	49	
-	1	1	...	690501-3	CAM, POST FEED, 1 1/8	48	
-	-	1	-	690501-4	CAM, POST FEED, 1 5/8	47	
-	1	1	-	458980-7	SUB ASSY, APPLICATOR FRAME	46	
-	1	1	-	690191-1	PLUG,NYLON	45	
-	1	1	-	455674-1	RAM	44	
-	1	1	-	7-21002-9	SCR, BTN SKT HD CAP 5/16-24 X 1.00	41	
-	1	1	-	690125-1	SHIM SUB-ASSY	39	
-	1	1	-	469367-8	SHIM	38	
-	1	1	-	879103-3	FINE ADJUST HEAD ASSEMBLY	37	
-	7	7	-	21024-4	WASHER, SPRG LOCK, REG NO 8	32	
-	2	2	-	2-21002-9	SCR, BTN SKT HD CAP 10-32 X .750	31	
-	2	2	-	2-21002-2	SCR, BTN SKT HD CAP 8-32 X .500	29	
-	1	1	-	3-690451-2	SPACER, STRIPPER	28	
-	1	1	-	240639-1	STRIPPER (MACHINING)	27	
-	2	2	-	22354-8	STUD, THREADED	25	
-	1	1	-	455678-1	PLATE, STRIP GUIDE	24	
-	1	1	-	240825-7	PLATE, STRIP HOLD DOWN	23	
-	2	2	-	4-22281-1	SPRING, DRAG	22	
-	1	1	-	454177-1	DRAG	20	
-	2	2	-	454204-6	GUIDE, LOWER STRIP	18	
-	4	4	-	3-21002-3	SCR, BTN SKT HD CAP 1/4-20 X .500	17	
-	1	1	-	690481-2	SPACER, HOLD DOWN	13	
-	1	1	-	23846-1	SPRING, DIE	12	
-	1	1	-	240644-1	PLATE, REAR SHEAR	11	
-	-	-	...	-	-	10	
-	1	1	-	690482-5	PLATE, FRONT SHEAR	9	
-	1	1	-	356038-3	ANVIL, COMBINATION	8	
-	1	1	-	1-690474-5	BLADE, SLUG	7	
-	1	1	-	1-455892-9	HOLD DOWN, TERMINAL	6	
-	1	1	-	6-240641-9	SPACER	5	
-	1	1	-	1-238009-2	BLOCK, FL CRIMPER SPACER	4	
-	1	1	-	8-456134-8	CRIMPER, INSULATION F PREMIUM	3	
-	1	1	-	1-455888-1	SPACER, CRIMPER	2	
-	1	1	-	3-456403-2	CRIMPER, WIRE PREMIUM	1	

DIMENSIONS:		TOLERANCES UNLESS OTHERWISE SPECIFIED:		APPROVED		NAME	
INCHES		0.001		C. CHEN		03-JAN-08	
0.001		0.001		M. HERR		18DEC2007	
0.001		0.001		N. DEMING		18DEC2007	
0.001		0.001		APPROVED		NAME	
0.001		0.001		APPLICATION SPEC		FINE ADJUST END FEED	
0.001		0.001		WEIGHT		HDM APPLICATOR	
0.001		0.001		CUSTOMER DRAWING		SCALE 3:5	
0.001		0.001		SHEET 1 OF 1		REV A	

CUSTOMER VIEWABLE ASSEMBLY

Mouser Electronics

Authorized Distributor

Click to View Pricing, Inventory, Delivery & Lifecycle Information:

[TE Connectivity:](#)

[1855353-2](#)