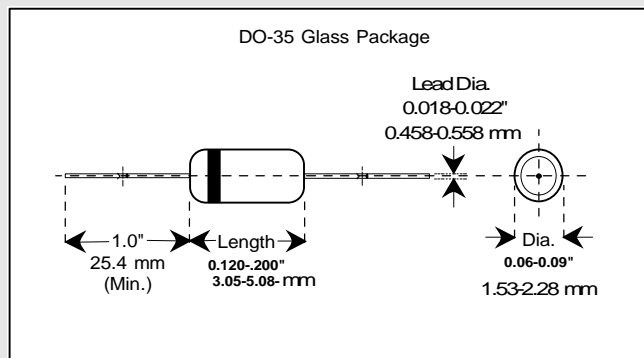


## Applications

Used in general purpose applications, where a controlled forward characteristic and fast switching speed are important.

## Features

- Six sigma quality
- Metallurgically bonded
- BKC's Sigma Bond™ plating for problem free solderability



Maximum Ratings	Symbol	Value	Unit	
Peak Inverse Voltage	PIV	85 (Min).	Volts	
Average Rectified Current	I <sub>avg</sub>	200	mAmps	
Continuous Forward Current	I <sub>Fdc</sub>	200	mAmps	
Peak Surge Current (t <sub>peak</sub> = 1 sec.)	I <sub>peak</sub>	1.0	Amp	
BKC Power Dissipation T <sub>L</sub> =50 °C, L = 3/8" from body	P <sub>tot</sub>	500	mWatts	
Operating Temperature Range	T <sub>Op</sub>	-65 to +200	° C	
Storage Temperature Range	T <sub>St</sub>	-65 to +200	° C	
Electrical Characteristics @ 25 °C*	Symbol	Minimum	Maximum	Unit
Forward Voltage Drop @ I <sub>F</sub> = 400 mA	V <sub>F</sub>	***	1.10	Volts
Breakdown Voltage @ I <sub>R</sub> = 25 μA	PIV	85		Volts
Reverse Leakage Current @ V <sub>R</sub> = 50 V	I <sub>R</sub>		100	μA
Reverse Recovery time (note 1)	t <sub>rr</sub>		10	nSecs

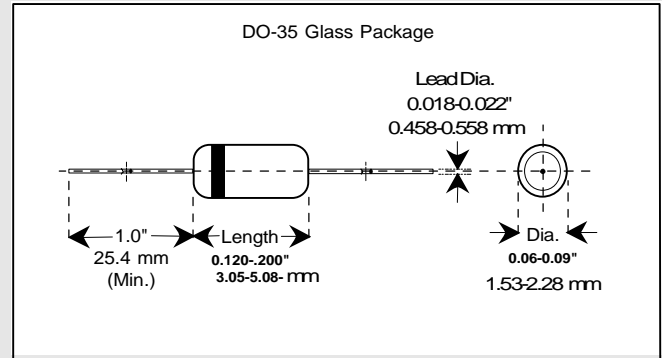
Note 1: Per Method 4031-A with I<sub>F</sub> = 10 mA, V<sub>r</sub> = 6 V, R<sub>L</sub> = 100 Ohms. \* UNLESS OTHERWISE SPECIFIED

## Applications

Used in general purpose applications, where a controlled forward characteristic and fast switching speed are important.

## Features

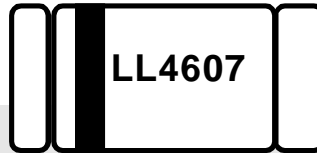
- Six sigma quality
- Metallurgically bonded
- BKC's Sigma Bond™ plating for problem free solderability



Maximum Ratings	Symbol	Value	Unit	
Peak Inverse Voltage	PIV	85 (Min).	Volts	
Average Rectified Current	I <sub>avg</sub>	200	mAmps	
Continuous Forward Current	I <sub>Fdc</sub>	500	mAmps	
Peak Surge Current (t <sub>peak</sub> = 1 sec.)	I <sub>peak</sub>	1.0	Amp	
BKC Power Dissipation T <sub>L</sub> =50 °C, L = 3/8" from body	P <sub>tot</sub>	500	mWatts	
Operating Temperature Range	T <sub>Op</sub>	-65 to +150	° C	
Storage Temperature Range	T <sub>St</sub>	-65 to +150	° C	
Electrical Characteristics @ 25 °C*	Symbol	Minimum	Maximum	Unit
Forward Voltage Drop @ I <sub>F</sub> = 400 mA	V <sub>F</sub>	***	1.10	Volts
Breakdown Voltage @ I <sub>R</sub> = 25 μA	PIV	85		Volts
Reverse Leakage Current @ V <sub>R</sub> = 50 V	I <sub>R</sub>		100	μA
Reverse Recovery time (note 1)	t <sub>rr</sub>		10	nSecs

Note 1: Per Method 4031-A with I<sub>F</sub> = 10 mA, V<sub>r</sub> = 6 V, R<sub>L</sub> = 100 Ohms. \* UNLESS OTHERWISE SPECIFIED

# Silicon Switching Diode



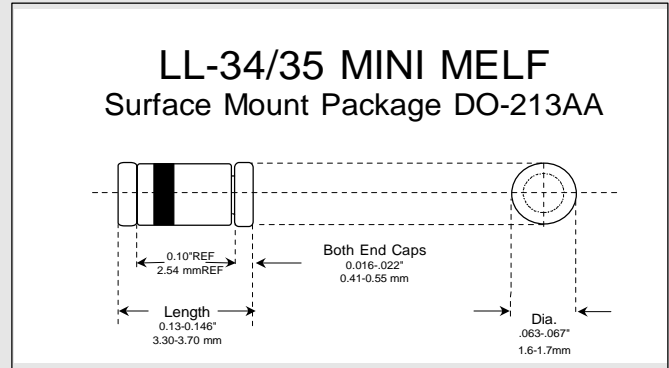
# L-35 Glass Package

## Applications

Used in general purpose applications, where a controlled forward characteristic and fast switching speed are important.

## Features

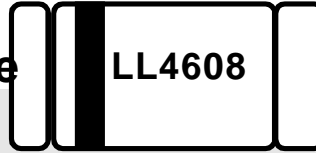
- Six sigma quality
- Metallurgically bonded
- BKC's Sigma Bond™ plating for problem free solderability



Maximum Ratings	Symbol	Value	Unit	
Peak Inverse Voltage	PIV	85 (Min).	Volts	
Average Rectified Current	I <sub>avg</sub>	200	mAmps	
Continuous Forward Current	I <sub>Fdc</sub>	200	mAmps	
Peak Surge Current (t <sub>peak</sub> = 1 sec.)	I <sub>peak</sub>	1.0	Amp	
BKC Power Dissipation	P <sub>tot</sub>	500	mWatts	
Operating Temperature Range	T <sub>Op</sub>	-65 to +200	°C	
Storage Temperature Range	T <sub>St</sub>	-65 to +200	°C	
Electrical Characteristics @ 25 °C*	Symbol	Minimum	Maximum	Unit
Forward Voltage Drop @ I <sub>F</sub> = 400 mA	V <sub>F</sub>	***	1.10	Volts
Breakdown Voltage @ I <sub>R</sub> = 25 μA	PIV	85		Volts
Reverse Leakage Current @ V <sub>R</sub> = 50 V	I <sub>R</sub>		100	μA
Reverse Recovery time (note 1)	t <sub>rr</sub>		10	nSecs

Note 1: Per Method 4031-A with I<sub>F</sub> = 10 mA, V<sub>R</sub> = 6 V, R<sub>L</sub> = 100 Ohms. \* UNLESS OTHERWISE SPECIFIED

# Silicon Switching Diode



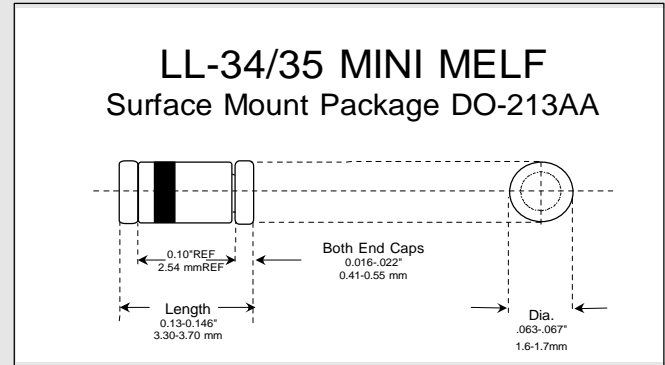
# LL-35 Glass Package

## Applications

Used in general purpose applications, where a controlled forward characteristic and fast switching speed are important.

## Features

- Six sigma quality
- Metallurgically bonded
- BKC's Sigma Bond™ plating for problem free solderability



Maximum Ratings	Symbol	Value	Unit	
Peak Inverse Voltage	PIV	85 (Min).	Volts	
Average Rectified Current	I <sub>avg</sub>	200	mAmps	
Continuous Forward Current	I <sub>Fdc</sub>	500	mAmps	
Peak Surge Current (t <sub>peak</sub> = 1 sec.)	I <sub>peak</sub>	1.0	Amp	
BKC Power Dissipation T <sub>L</sub> =50 °C, L = 3/8" from body	P <sub>tot</sub>	500	mWatts	
Operating Temperature Range	T <sub>Op</sub>	-65 to +150	°C	
Storage Temperature Range	T <sub>St</sub>	-65 to +150	°C	
Electrical Characteristics @ 25 °C*	Symbol	Minimum	Maximum	Unit
Forward Voltage Drop @ I <sub>F</sub> = 400 mA	V <sub>F</sub>	***	1.10	Volts
Breakdown Voltage @ I <sub>R</sub> = 25 µA	PIV	85		Volts
Reverse Leakage Current @ V <sub>R</sub> = 50 V	I <sub>R</sub>		100	µA
Reverse Recovery time (note 1)	t <sub>rr</sub>		10	nSecs

Note 1: Per Method 4031-A with I<sub>F</sub> = 10 mA, V<sub>r</sub> = 6 V, R<sub>L</sub> = 100 Ohms. \* UNLESS OTHERWISE SPECIFIED



**Microsemi**

6 Lake Street - Lawrence, MA 01841

Tel: 978-681-0392 - Fax: 978-681-9135

# Mouser Electronics

Authorized Distributor

Click to View Pricing, Inventory, Delivery & Lifecycle Information:

[Microsemi:](#)

[1N4608](#) [1N4607](#)