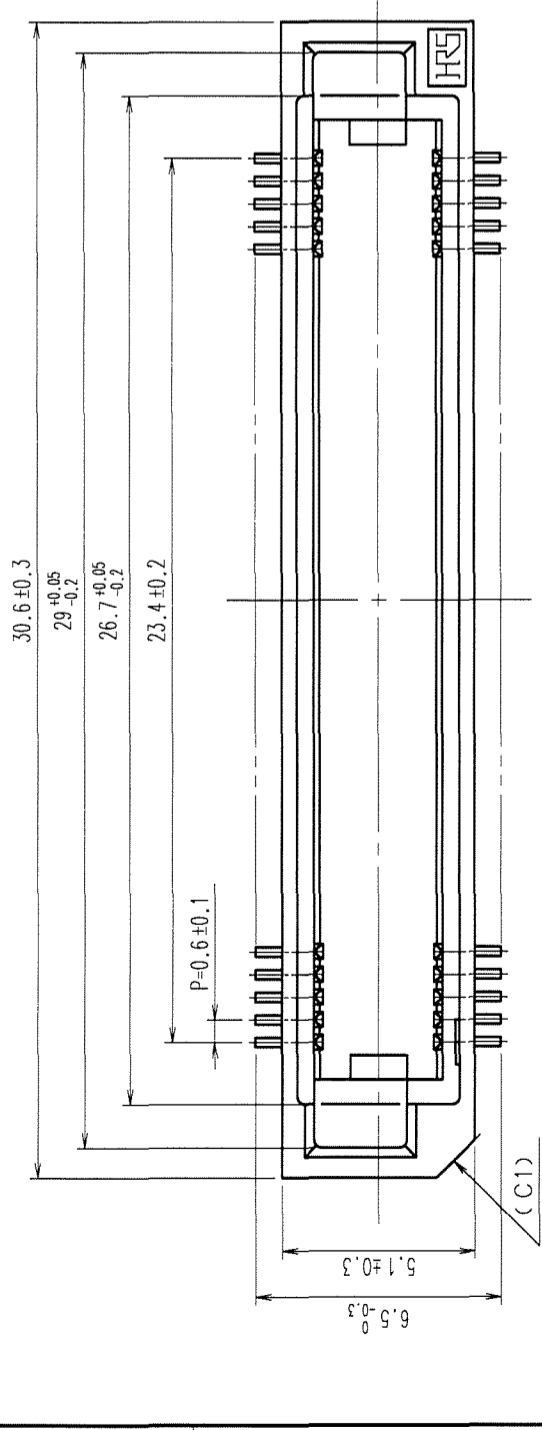
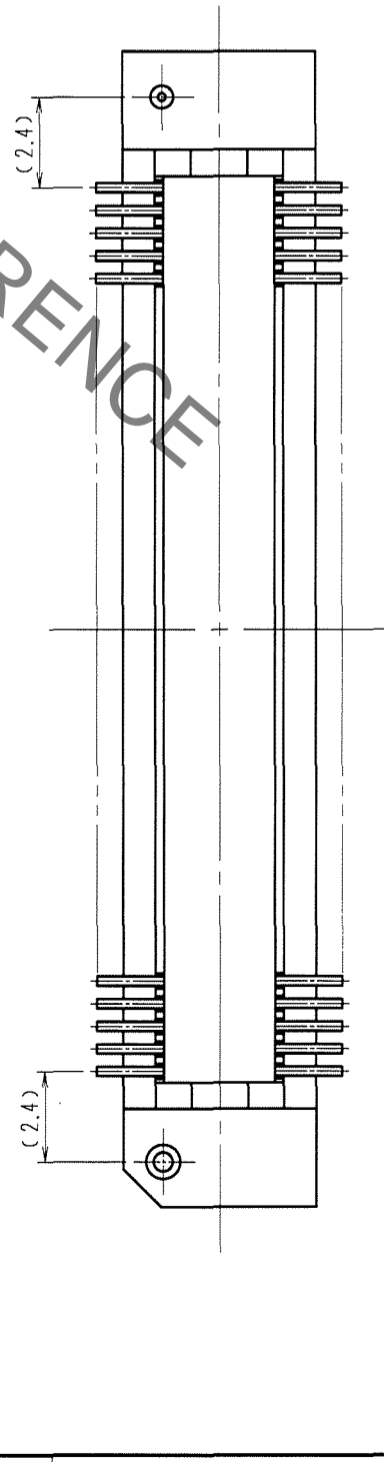
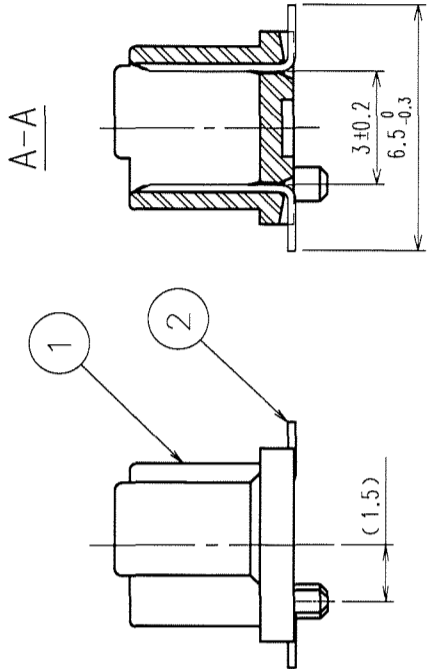
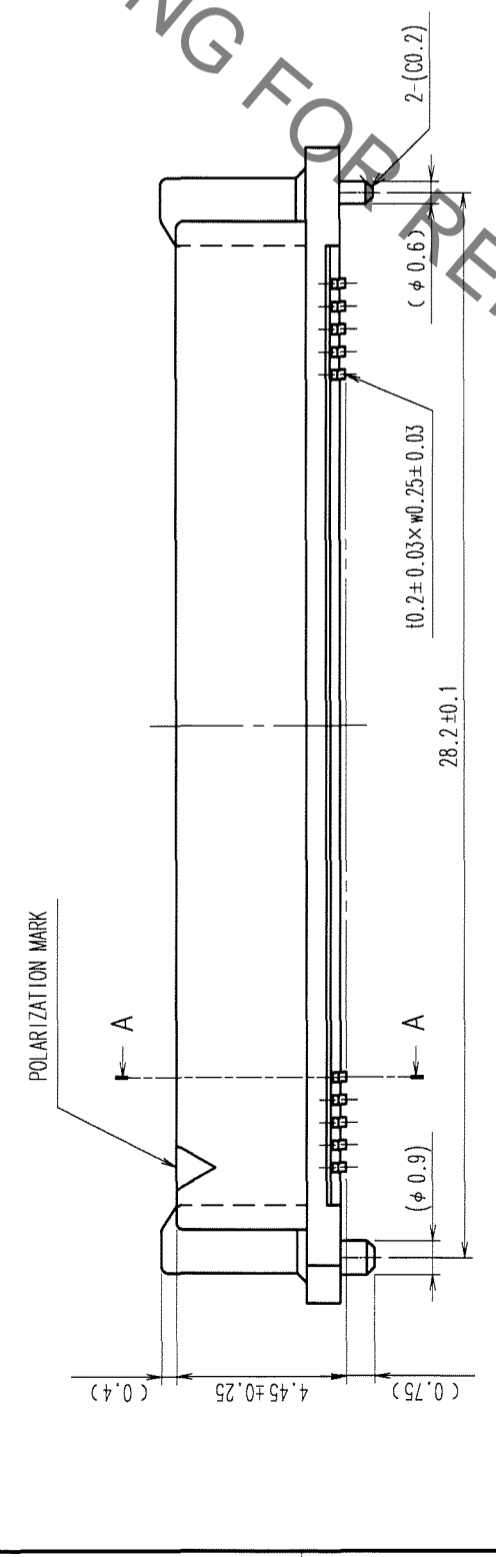
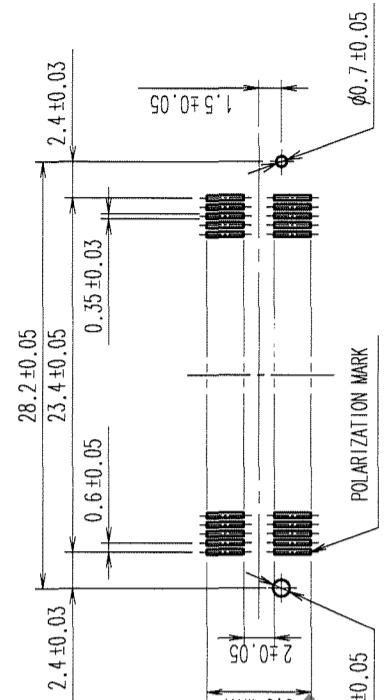


Aug.1.2020 Copyright 2020 HIROSE ELECTRIC CO., LTD. All Rights Reserved.
 In case of consideration for using Automotive equipment / device which demand high reliability, kindly contact our sales window correspondents.



RECOMMENDED LAND PATTERN DIMENSION OF PCB (MOUNTING SIDE) (2:1)



- NOTE 1. LEAD CO-PLANARITY SHALL BE 0.1mm MAX.
 2. FOR MODIFICATION, ETC., PREVENTIVE HOLE FOR SINK MARK MAY BE ADDED ACCORDING TO CIRCUMSTANCES.
 3. THE DIMENSIONS IN PARENTHESES ARE FOR REFERENCE.

1	PPS	LIGHT BROWN (UL94V-0)	2	PHOSPHOR BRONZE	CONTACT AREA: GOLD 0.1μm min. LEAD AREA: GOLD FLASH UNDER PLATING: NICKEL 0.5μm min.
NO.		MATERIAL		FINISH, REMARKS	
CODE NO. (COLD)		CL			
DRAWING NO.		EDC3-150822-25		PART NO. FX8C-80P-SV(71)	
SCALE		5:1		CODE NO. CL578-0503-4-71	
UNITS		mm		1	
DRAWN		K. NAKAMURA		DESIGNED	
FINISH, REMARKS		05.11.15		CHECKED	
		05.11.16		APPROVED	
		H. Okawa		RELEASED	

TO PCK