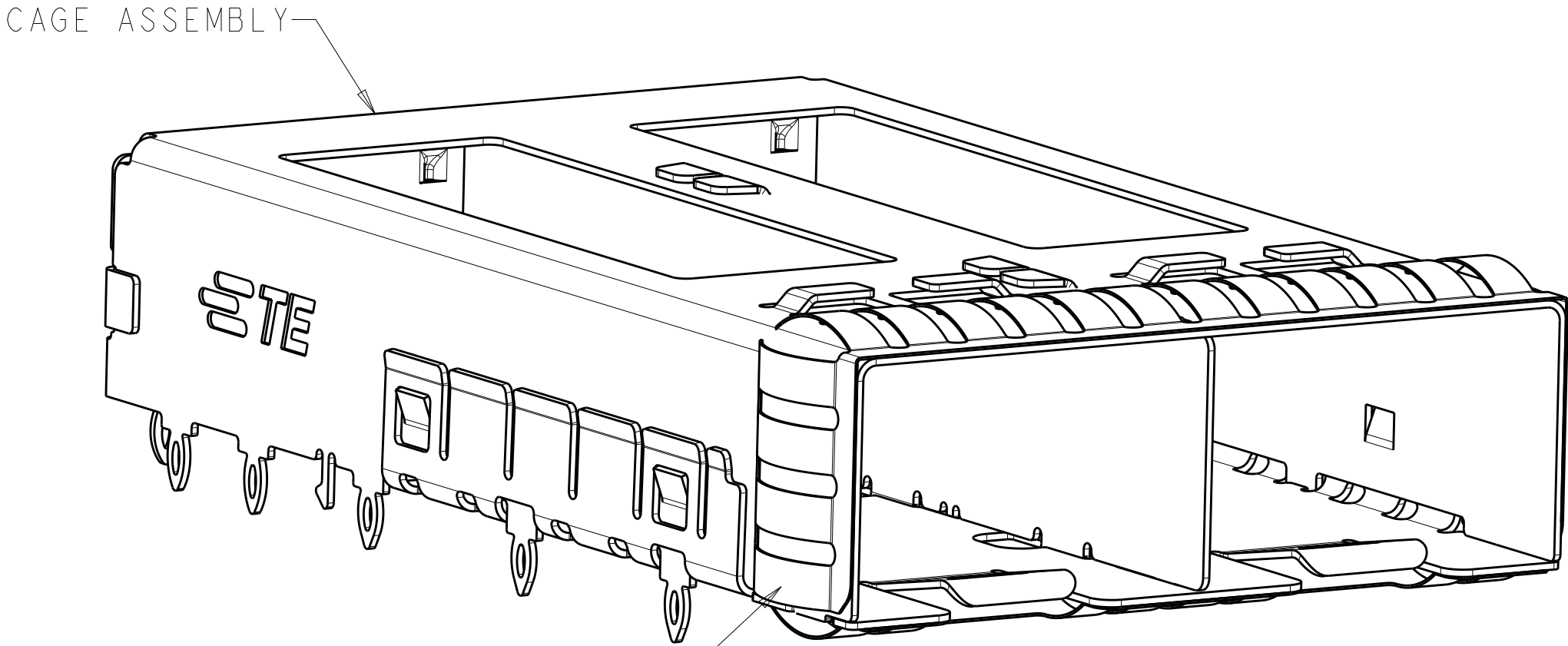
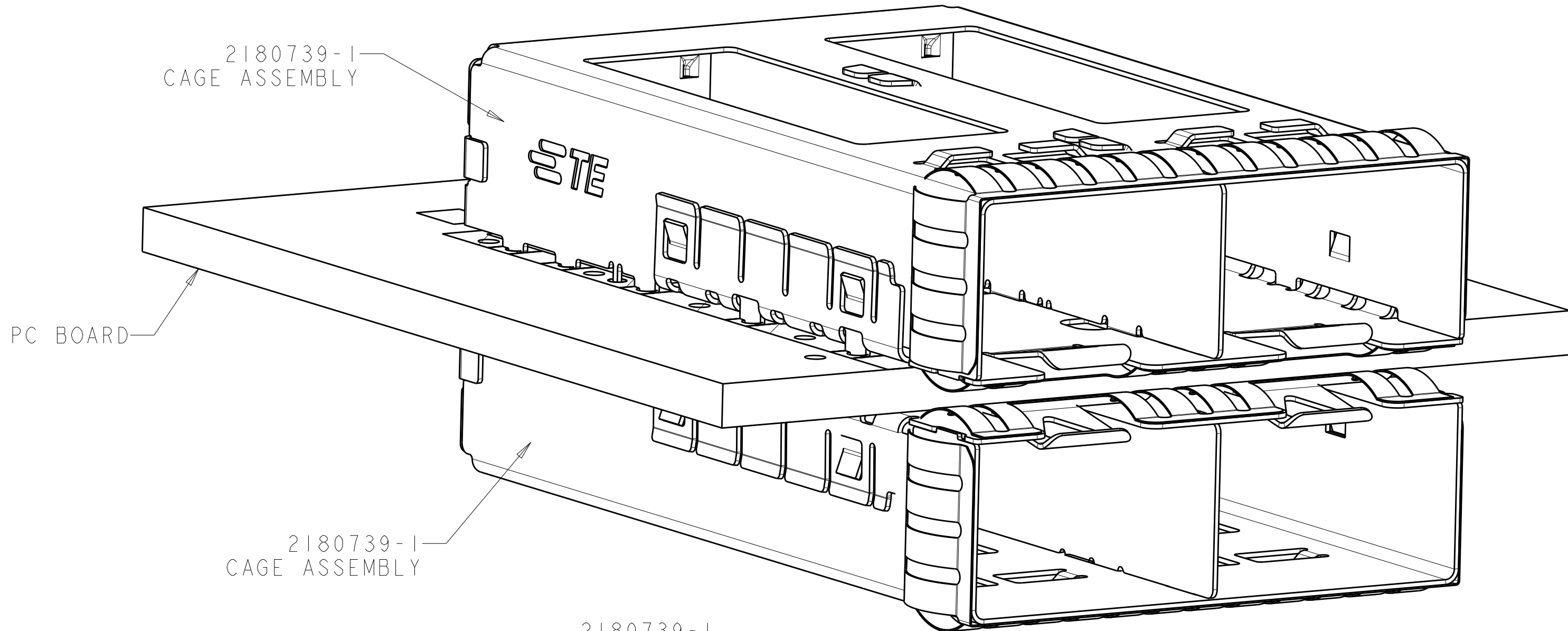
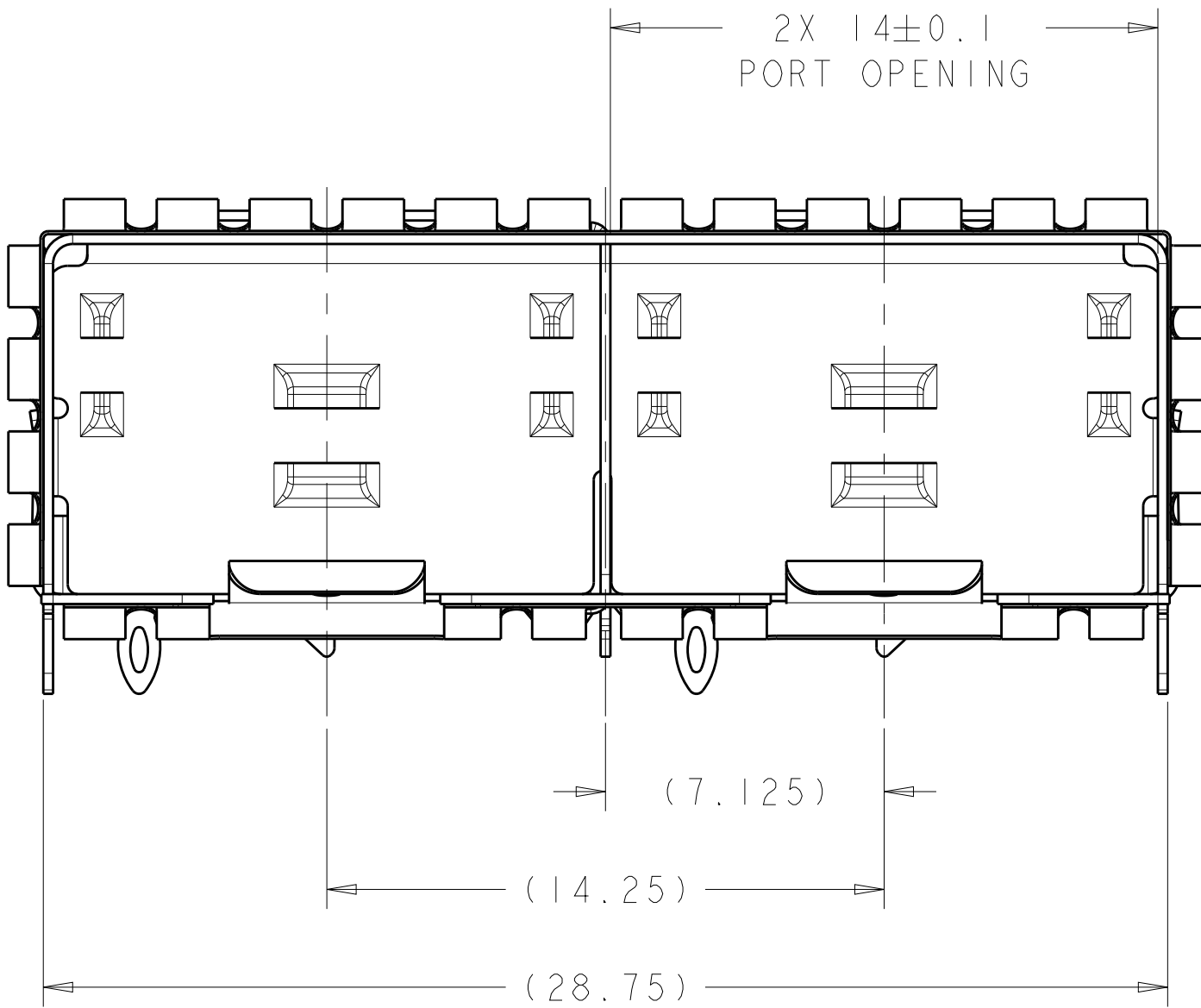


LOC	DIST	REVISIONS						
		P	LTR	DESCRIPTION	DATE	DWN	APVD	
GP	00		A	RELEASED PER ECO-12-013192	09OCT2012	BMM	MRS	
			A1	RELEASED PER ECO-14-005063	16DEC2013	JZ	SH	

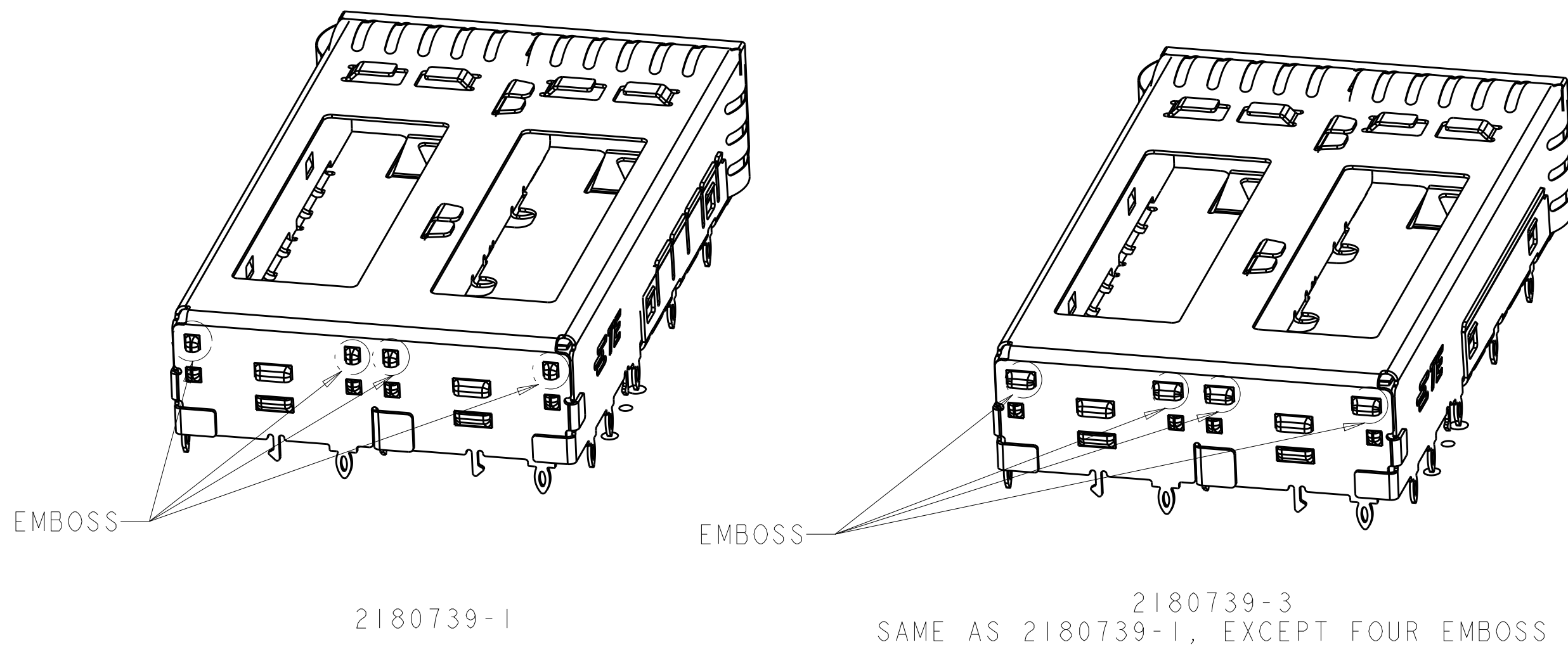
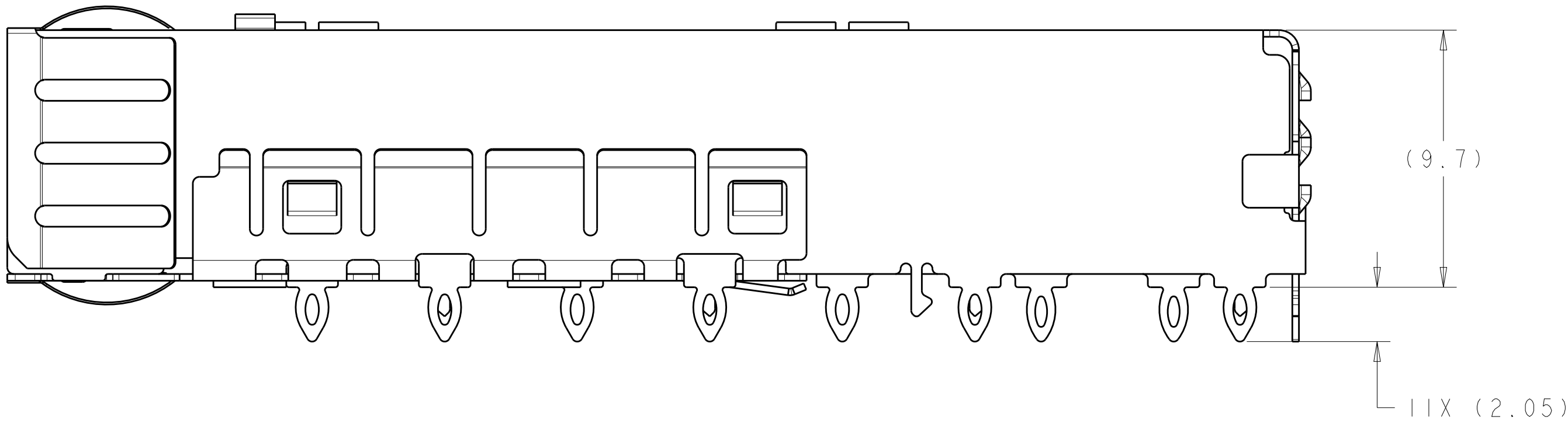


2180739-1
SCALE 5:1



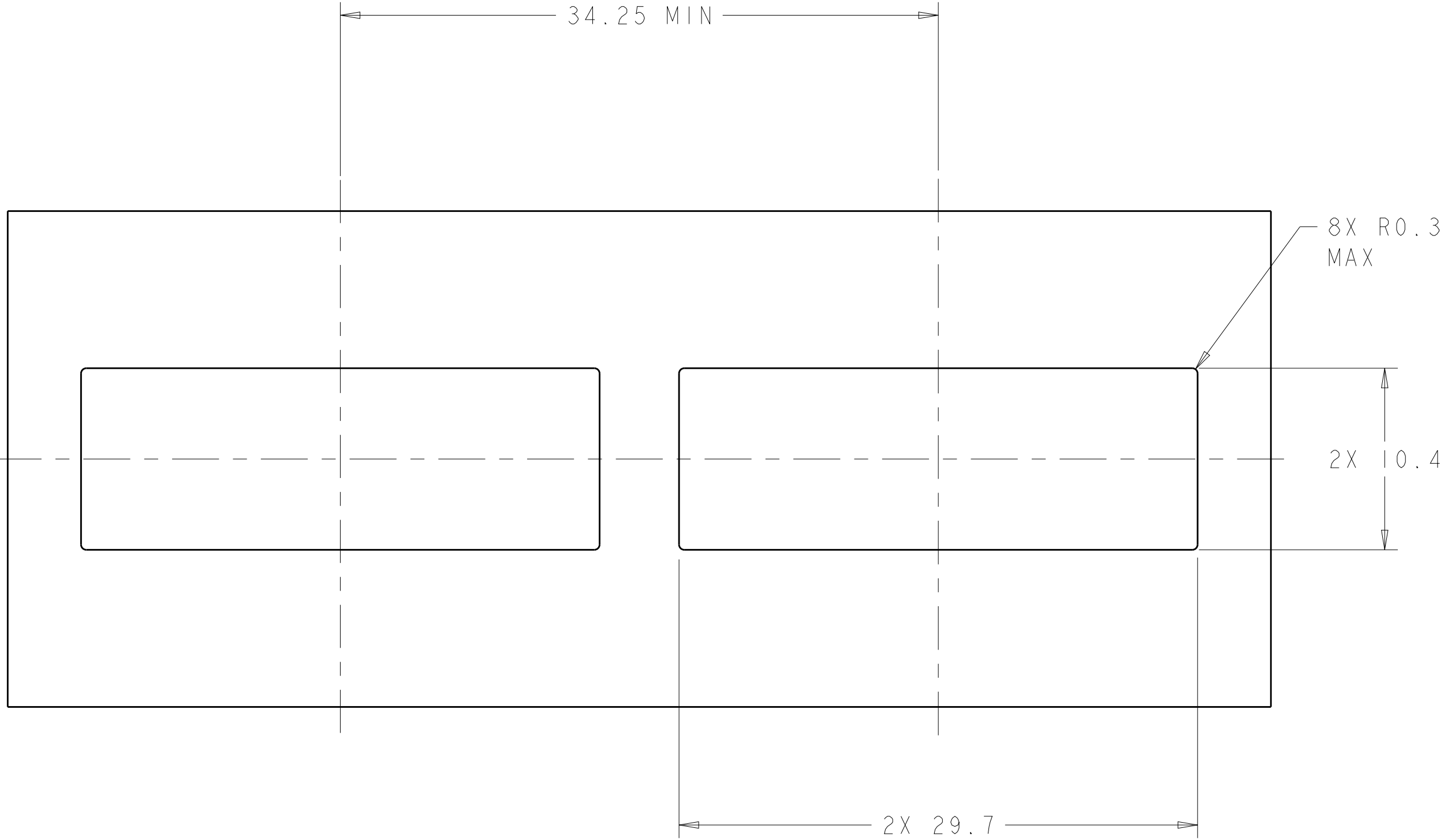
2180739-1
MOUNTED BELLY TO BELLY
SCALE 5:1

1. MATERIAL:
CAGE ASSEMBLY: 0.25mm THICK NICKEL SILVER ALLOY
EMI SPRINGS: COPPER ALLOY
2. FINISH:
SPRINGS: MINIMUM OF 0.8mm MATTE TIN PLATED OVER MINIMUM OF 0.8um NICKEL UNDERPLATE.
NON-PLATED EDGES PERMISSIBLE.
3. DATUM AND BASIC DIMENSIONS ESTABLISHED BY CUSTOMER.
4. MATES WITH SFP MSA COMPLIANT RECIEVERS.
5. PADS AND VIAS CHASSIS GROUND.
6. INTERPRETATION OF DATUM REFERENCE FRAME IN ACCORDANCE WITH SECT 4.4.1.1 OR ASME Y14.5M-1994.
7. MINIMUM PC BOARD THICKNESS:
SINGLE SIDED: 1.5mm
DOUBLE SIDED: 2.25mm
8. HOLE PATTERN REPEATS FOR EACH PORT, SPACING BETWEEN PORTS IS 14.25mm.
9. REFERENCE APPLICATION SPEC. 114-13120, HOLE A, FOR RECOMMENDED DRILL HOLE DIAMETER AND PLATING THICKNESS.
10. REFERENCE APPLICATION SPEC. 114-13120, HOLE B, FOR RECOMMENDED DRILL HOLE DIAMETER AND PLATING THICKNESS.
11. CERTAIN MATING TRANCEIVERS MAY REQUIRE ADDITIONAL PCB THICKNESS THAT WOULD NEED TO BE DETERMINED BY THE CUSTOMER.
12. PRODUCT COMPLIES WITH SPECIFICATION SFF-8433, IMPROVED PLUGGABLE FORM FACTOR FOR SFP+ GANGED CAGES.

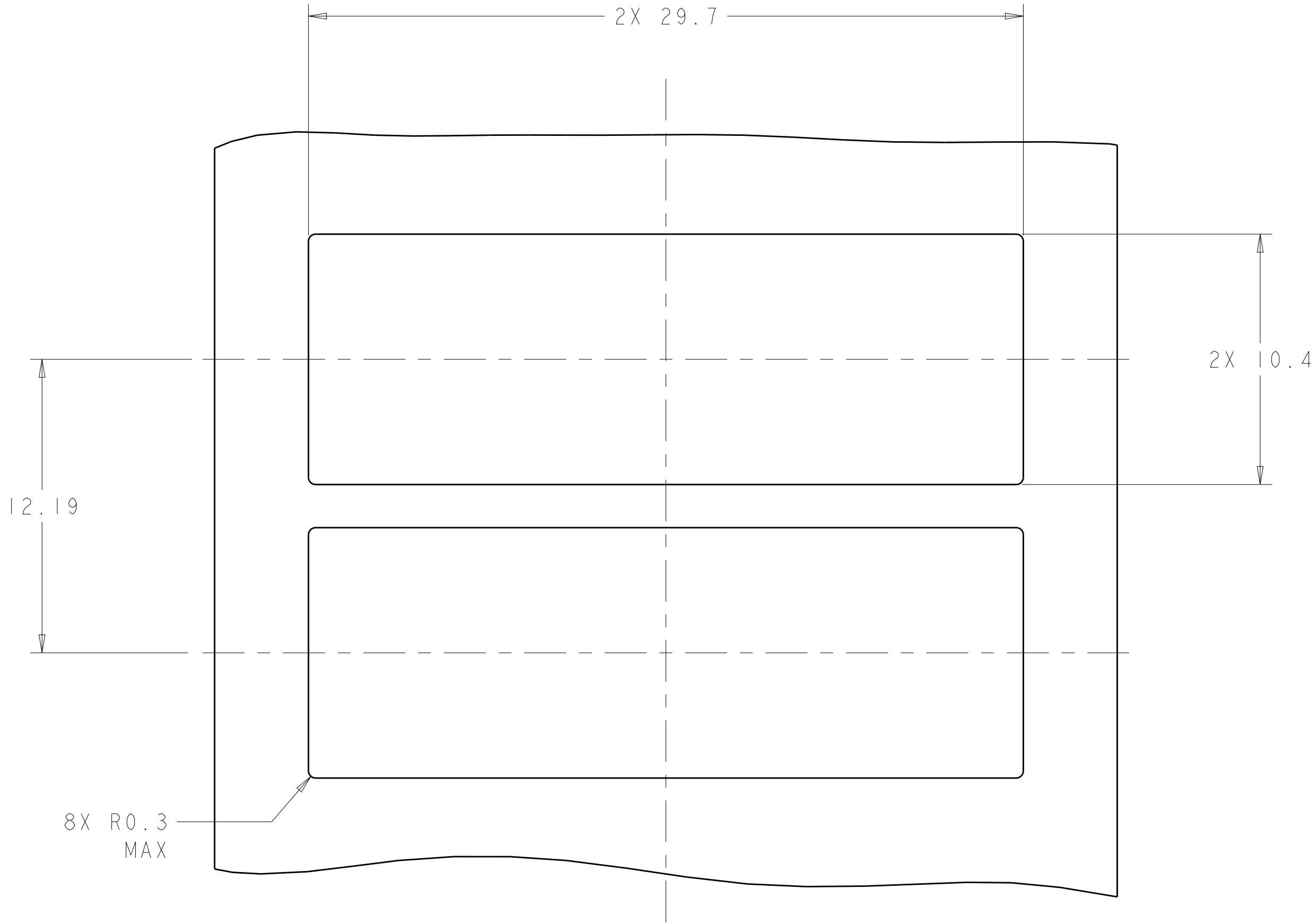


THIS DRAWING IS A CONTROLLED DOCUMENT.		DWN B. MATTHEWS CHK M. SCHMITT APVD M. SCHMITT	24MAY2011 24MAY2011 24MAY2011	TE Connectivity	
DIMENSIONS:	TOLERANCES UNLESS OTHERWISE SPECIFIED:	PRODUCT SPEC	NAME	SFP+ ENHANCED 1X2 CAGE ASSEMBLY, PRESS-FIT, EMI SPRINGS	
mm	0 PLC ±0.13 1 PLC ±0.1 2 PLC ±0.08 3 PLC ±.05 4 PLC ±.05 ANGLES ±.1	108-2364	SIZE	CAGE CODE	DRAWING NO
		114-13120	A1	00779	2180739
MATERIAL	FINISH	WEIGHT	Customer Drawing		RESTRICTED TO
			SCALE 6:1		SHEET 1 OF 4
					REV A1

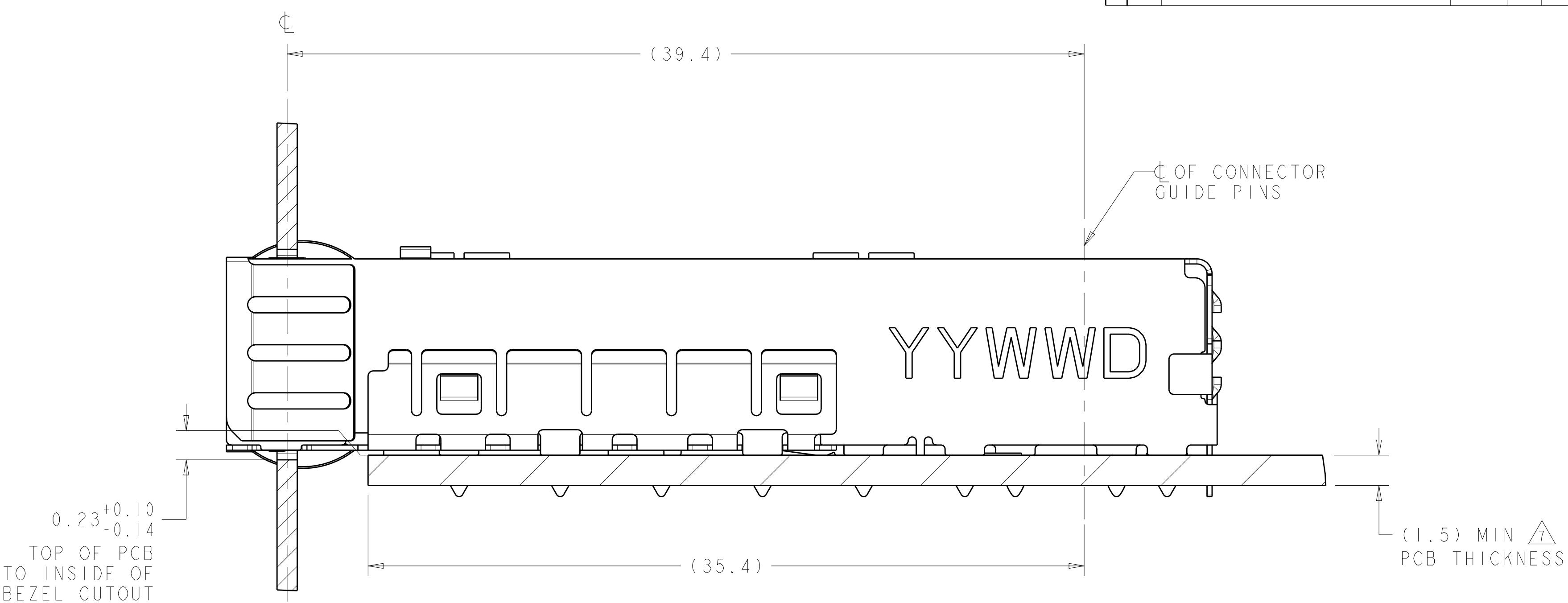
LOC		DIST		REVISIONS				
GP		00		P	LYR	DESCRIPTION		DATE
						SEE SHEET 1		



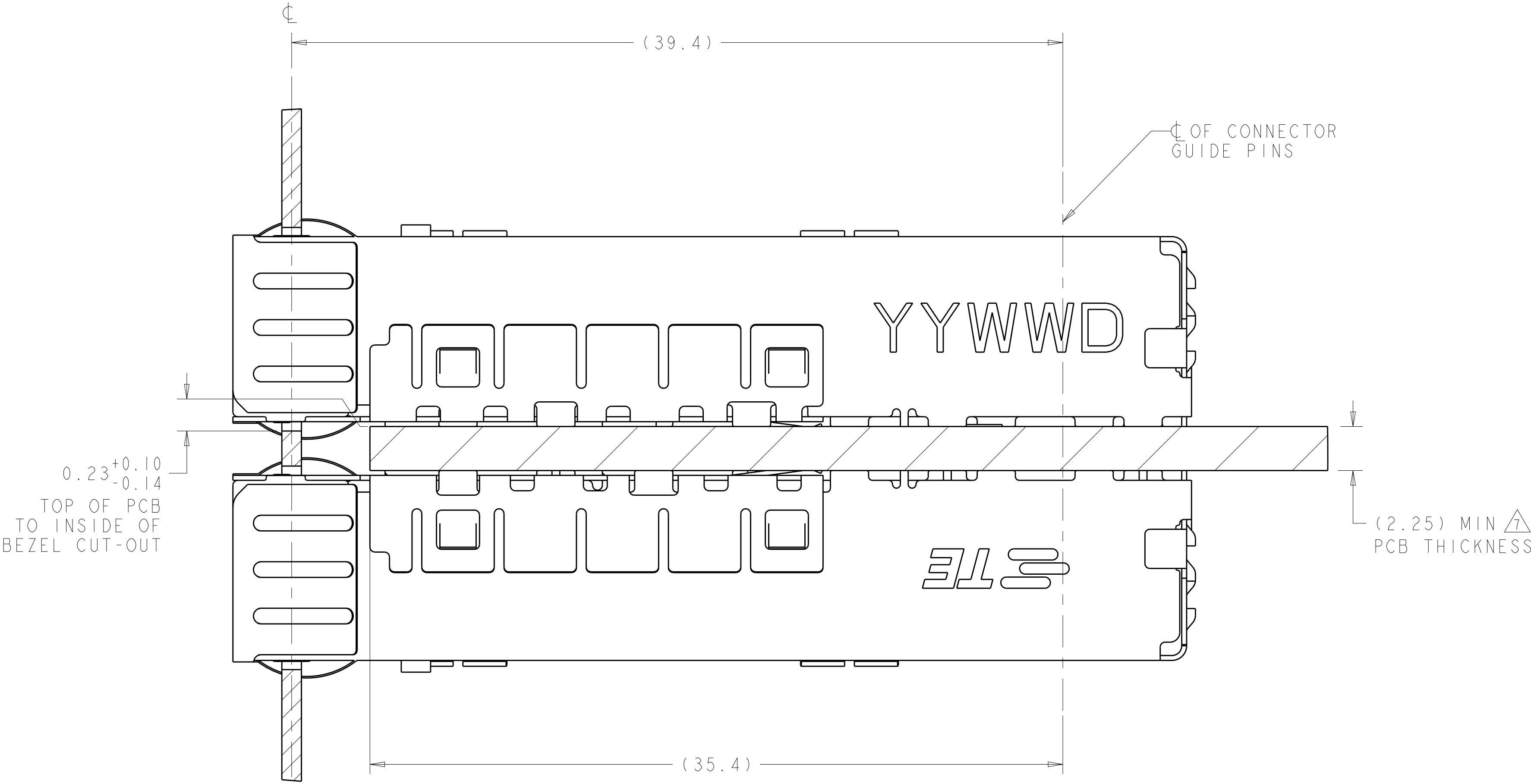
RECOMMENDED BEZEL CUT-OUT
SINGLE SIDED APPLICATIONS
SCALE 4:1



RECOMMENDED BEZEL CUT-OUT
BELLY TO BELLY APPLICATIONS

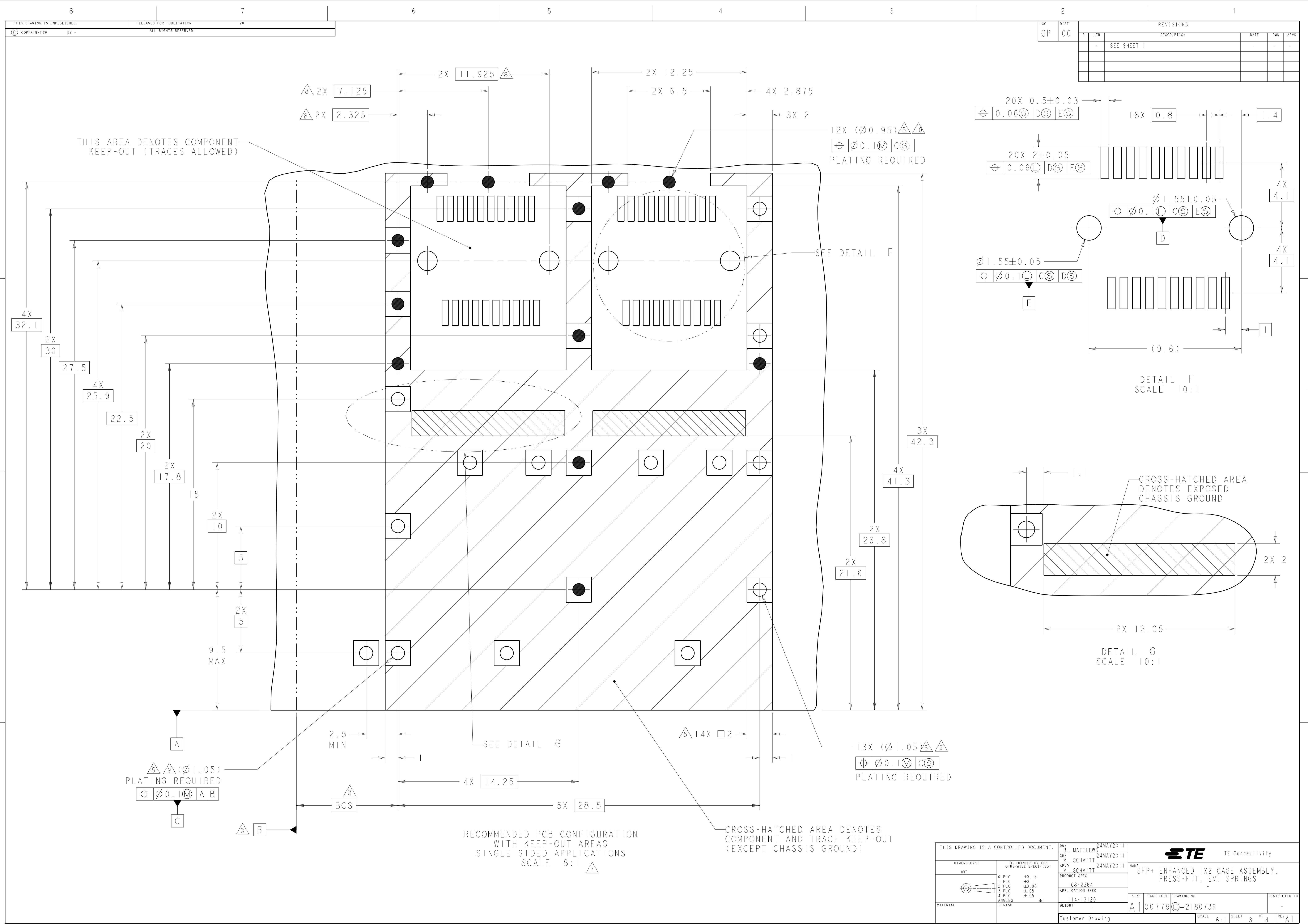


2180739-1
MOUNTED ON PC BOARD
SHOWN THRU RECOMMENDED BEZEL



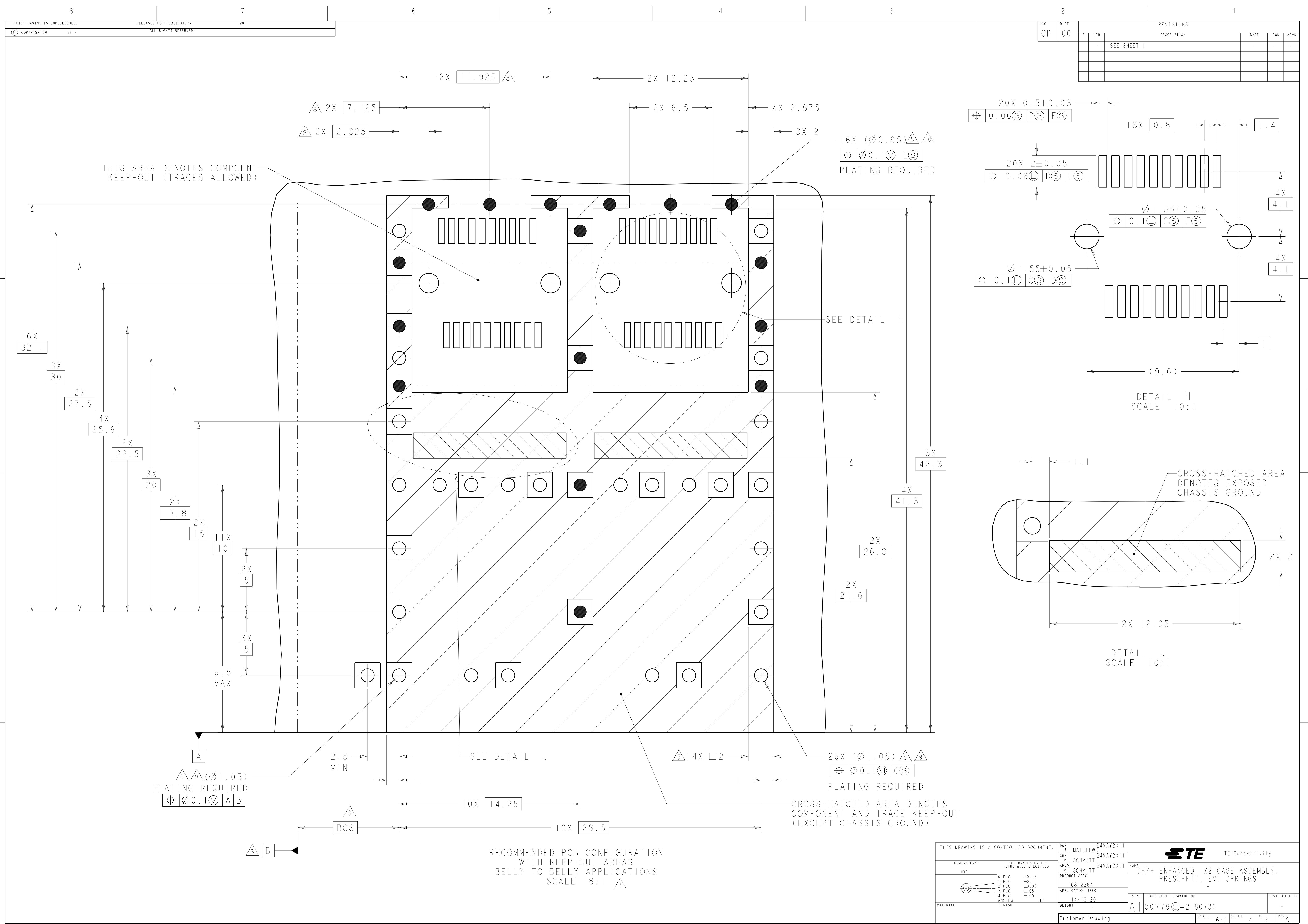
2180739-1
MOUNTED BELLY TO BELLY ON PC BOARD
SHOWN THRU RECOMMENDED BEZEL

THIS DRAWING IS A CONTROLLED DOCUMENT.				OWN B. MATTHEWS 24MAY2011				TE Connectivity			
DIMENSIONS:				CHK M. SCHMITT 24MAY2011				NAME SFP+ ENHANCED 1X2 CAGE ASSEMBLY, PRESS-FIT, EMI SPRINGS			
mm				APVD M. SCHMITT 24MAY2011				SIZE CAGE CODE DRAWING NO			
TOLERANCES UNLESS OTHERWISE SPECIFIED:				PRODUCT SPEC				RESTRICTED TO			
0 PLC ±0.13				108-2364				A100779C=2180739			
1 PLC ±0.1				APPLICATION SPEC				SCALE 6:1			
2 PLC ±0.08				114-13120				SHEET 2 OF 4			
3 PLC ±0.05				WEIGHT				REV A1			
4 PLC ±0.05				Customer Drawing							
ANGLES											
FINISH											

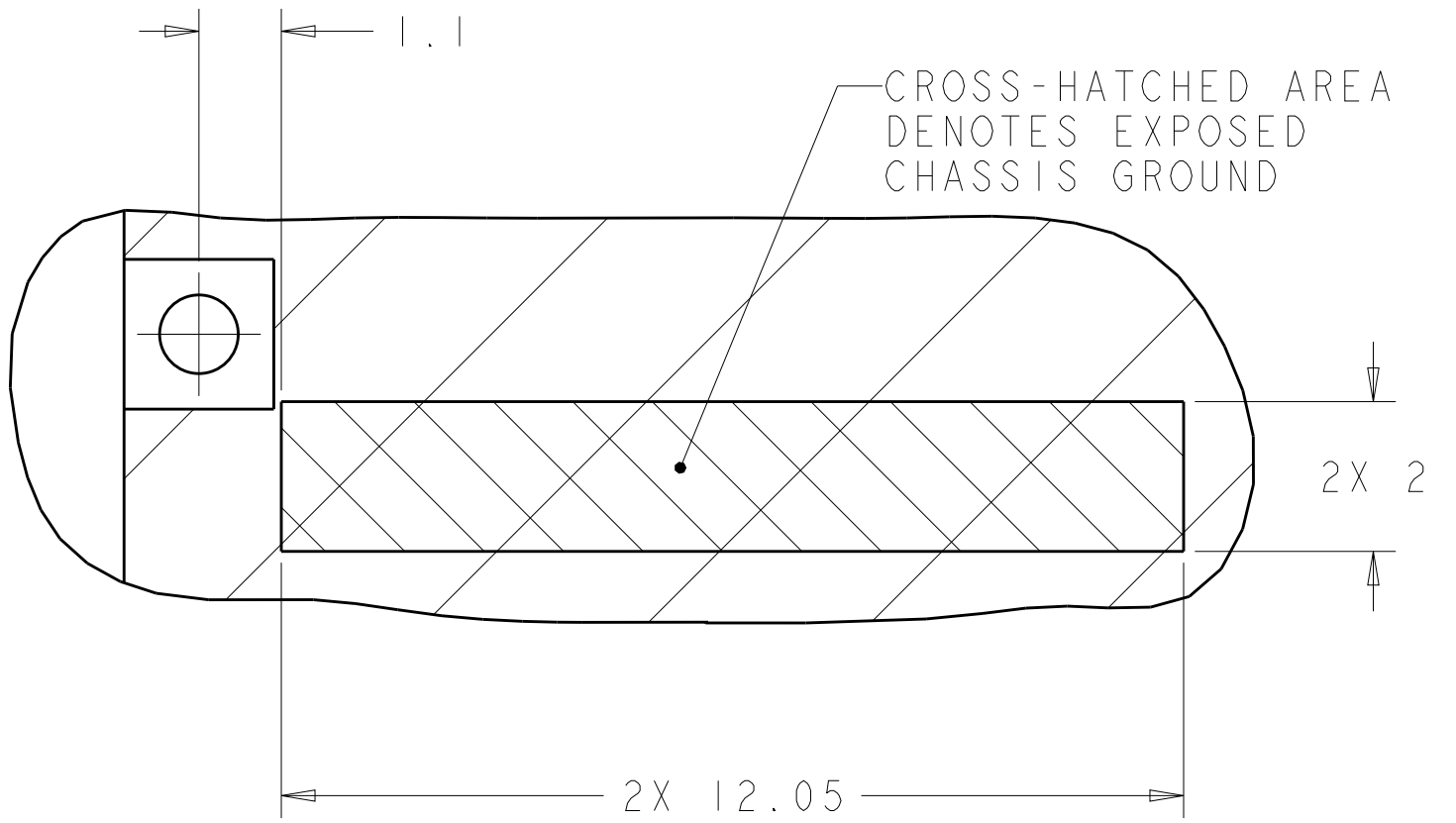
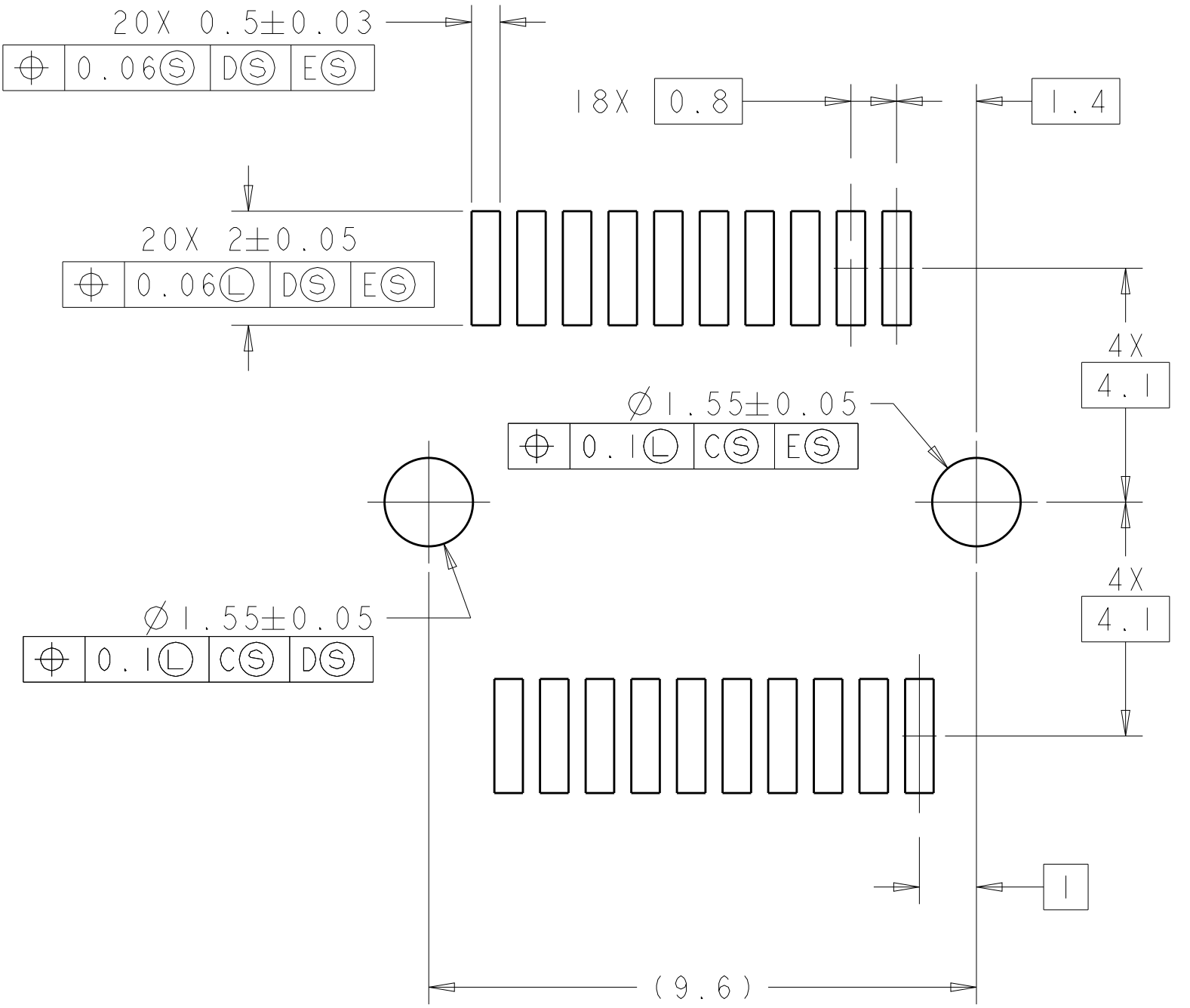


LOC		DIST		REVISONS			
GP		00		DATE	OWN	APVD	
				DESCRIPTION	DATE	OWN	APVD
				SEE SHEET 1	-	-	-

THIS DRAWING IS A CONTROLLED DOCUMENT.				OWN	B. MATTHEWS	24MAY2011	NAME		SFP+ ENHANCED 1X2 CAGE ASSEMBLY, PRESS-FIT, EMI SPRINGS	
				CHK	M. SCHMITT	24MAY2011				
				APVD	M. SCHMITT	24MAY2011	PRODUCT SPEC		SIZE	
							108-2364		CAGE CODE	
							APPLICATION SPEC		DRAWING NO	
							114-13120		RESTRICTED TO	
							WEIGHT		A100779	
							Customer Drawing		C=2180739	
							SCALE		SHEET	
							6:1		3 OF 4	
									REV	
									A1	



LOC		DIST		REVISONS			
GP		00		P	LTR	DESCRIPTION	DATE
						SEE SHEET 1	



Mouser Electronics

Authorized Distributor

Click to View Pricing, Inventory, Delivery & Lifecycle Information:

[TE Connectivity:](#)

[2180739-1](#)