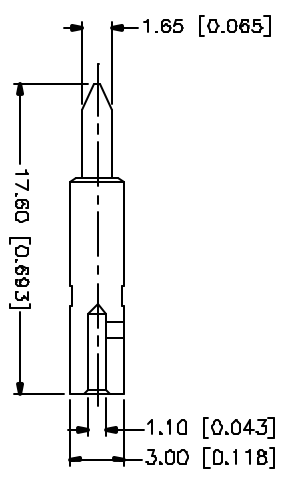
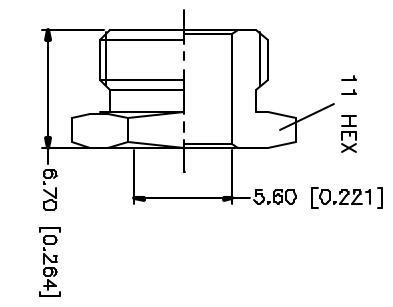
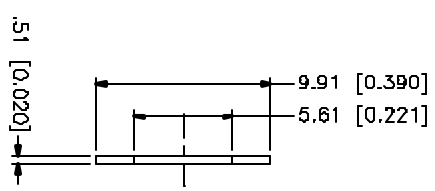
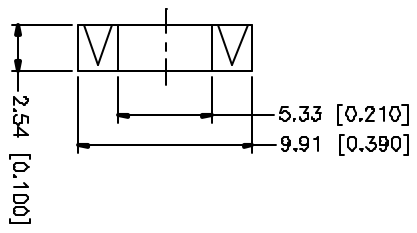
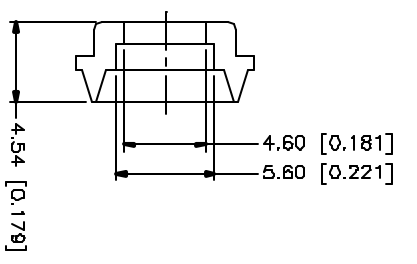
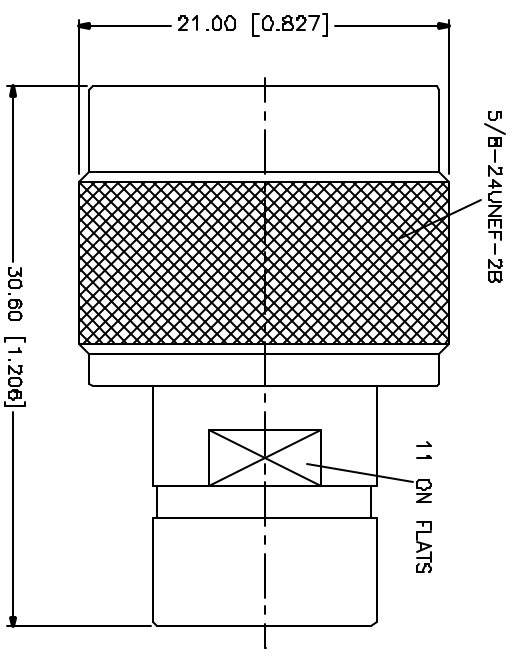
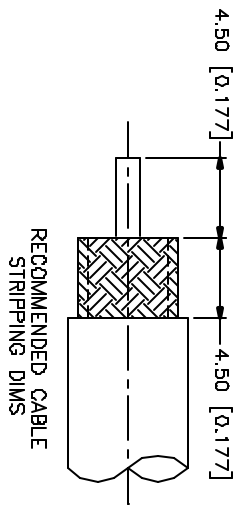


REV.	DATE	DESCRIPTION
A	08/28/00	REVISE OLD PRINT
B	05/30/04	UPDATE DRAWING FORMAT



NOTE:
1. CRIMPED CONTACT PIN*
HEX CRIMP SIZE .100*
OR SOLDER.

QTY	FINISH	MATERIAL	DESCRIPTION
1	NEXCOTE	BRASS	HEX NUT
1	NEXCOTE	BRASS	WASHER
1	RED	SILKZONE	GASKET
1	NEXCOTE	BRASS	BRAID CLAMP
1	NATURAL	TEFLON	INSULATOR
1	NEXCOTE	BRASS	BODY/SHELL

UNLESS OTHERWISE SPECIFIED, DIMENSIONS ARE IN INCHES AND FOR DIMENSIONS IN MILLIMETERS, TOLERANCES FOR MILLIMETERS ARE: A - .05 - .81mm ± 0.20mm B - .81mm - 1.27mm ± 0.25mm C - 1.27mm - 2.54mm ± 0.30mm UNLESS OTHERWISE SPECIFIED, DIMENSIONS FOR INCHES ARE: .020 - .125 ± 0.0075 .125 - .1875 ± 0.010 .1875 - .3125 ± 0.015 .3125 - 1.1875 ± 0.020 1.1875 - 4.750 ± 0.030
DO NOT SCALE DRAWING

APPROVALS	DATE
DRAWN G.R.S.	05/30/04
CHECKED	
REBLEN	
SHEET 1 OF 1	

PART DESCRIPTION	PART NO.
N CLAMP PLUG (FOR RG-58C/U, 58/U, 142A/U, 223/U CABLE)	172111

DWG. NO.	REV.	SIZE	SCALE
C:/172/172111.DWG	B	A	NA

Amphenol Connex

Mouser Electronics

Authorized Distributor

Click to View Pricing, Inventory, Delivery & Lifecycle Information:

[Amphenol:](#)

[172111](#)