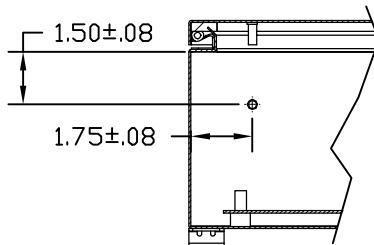
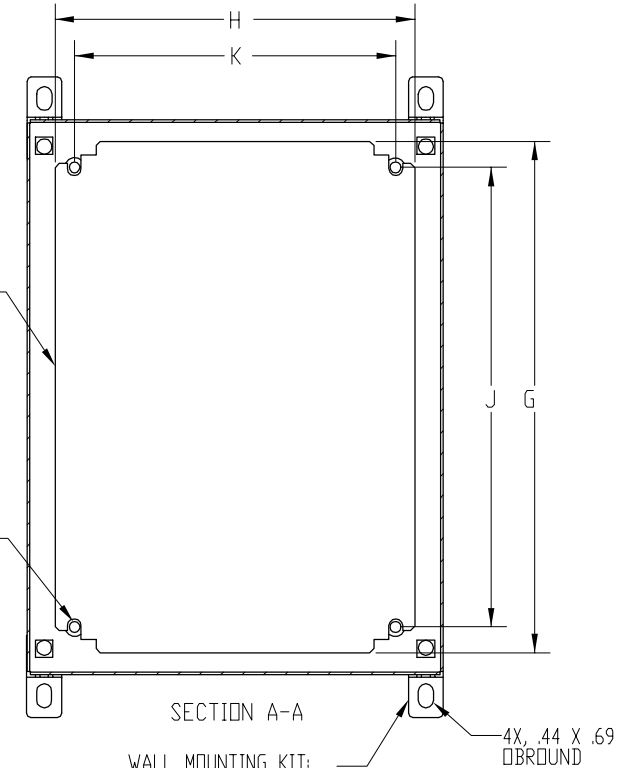
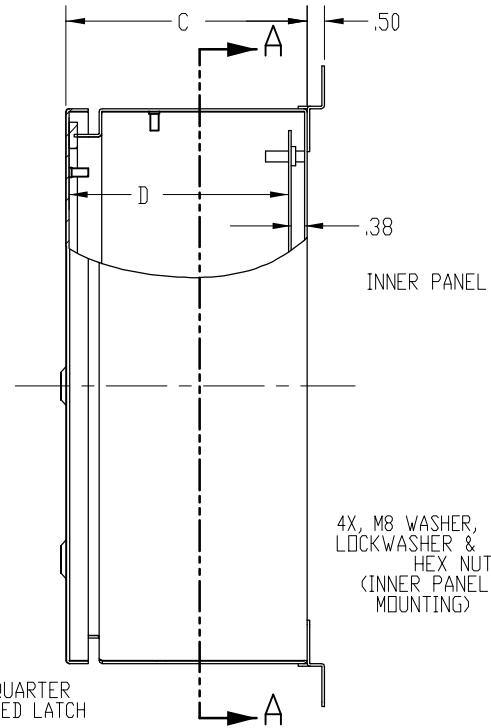
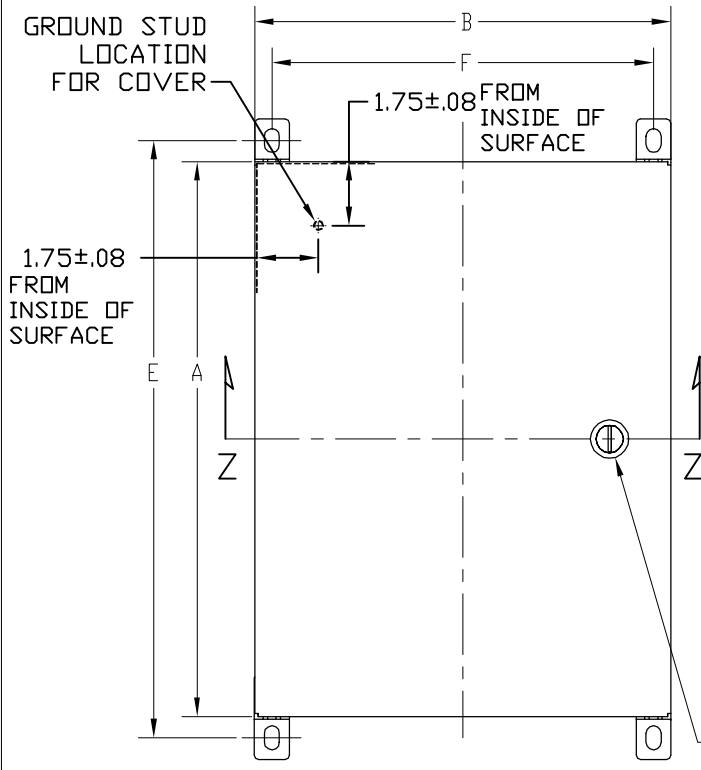


PART NAME	NEMA SHEET METAL BOX- STYLE B	PART No.	SNB-3738 THRU SNB-3741	REVISION DATE	9-07-10
-----------	-------------------------------	----------	------------------------	---------------	---------



SECTION Z-Z
SHOWING BOX
GROUND STUD
LOCATION

ITEM NUMBER	A	B	C	D	E	F	G	H	J	K
SNB-3738	7.87	5.91	5.91	5.33	9.17	4.46	6.49	3.94	4.92	2.96
SNB-3739	7.87	7.87	3.98	3.40	9.17	6.42	6.49	5.91	4.92	4.92
SNB-3740	9.84	9.84	5.91	5.33	11.14	8.39	8.46	7.87	6.89	6.89
SNB-3741	9.84	7.87	3.98	3.40	11.14	6.42	8.46	5.91	6.89	4.92

MATERIAL:

BODY & COVER - 16 GA. [.062" (1.5mm)] COLD ROLLED STEEL
 PANEL - 14 GA. [.078" (2mm)] THK. COLD ROLLED STEEL
 MOUNTING BRACKETS AND HARDWARE - 14 GA. [.078" (2mm)] STAINLESS STEEL
 GASKET - NEOPRENE

FINISH:

BODY & COVER - LIGHT GRAY POWDER COAT PAINT
 PANEL - ZINC CHROMATE
 MOUNTING BRACKETS - NATURAL

DIMENSIONS ARE IN INCHES

Mouser Electronics

Authorized Distributor

Click to View Pricing, Inventory, Delivery & Lifecycle Information:

[Bud Industries:](#)

[SNB-3738-SS](#)