

THIS DRAWING IS UNPUBLISHED. RELEASED FOR PUBLICATION  
 © COPYRIGHT - BY TYCO ELECTRONICS CORPORATION. ALL RIGHTS RESERVED.

LOC	DIST	REVISIONS					
AJ	16	P	LTR	DESCRIPTION	DATE	DWN	APVD
			Z	REVISED PER ECO-10-008433	24APR10	HMR	KW

- 1 COPPER ALLOY
- 2 TIN-LEAD PL PER ASTM-B-545  
2.54  $\mu\text{m}$  [.000100] MIN THK, WITH SUPPLEMENTAL ANTI-FRETTING LUBRICANT.
- 3 SILVER PL PER QQ-S-365  
5.08  $\mu\text{m}$  [.000200] MIN THK
- 4 TIN PLATE PER ASTM-B-545  
2.54  $\mu\text{m}$  [.000100] MIN THK, WITH SUPPLEMENTAL ANTI-FRETTING LUBRICANT.

SUPERSEDED BY  
9-221132-4

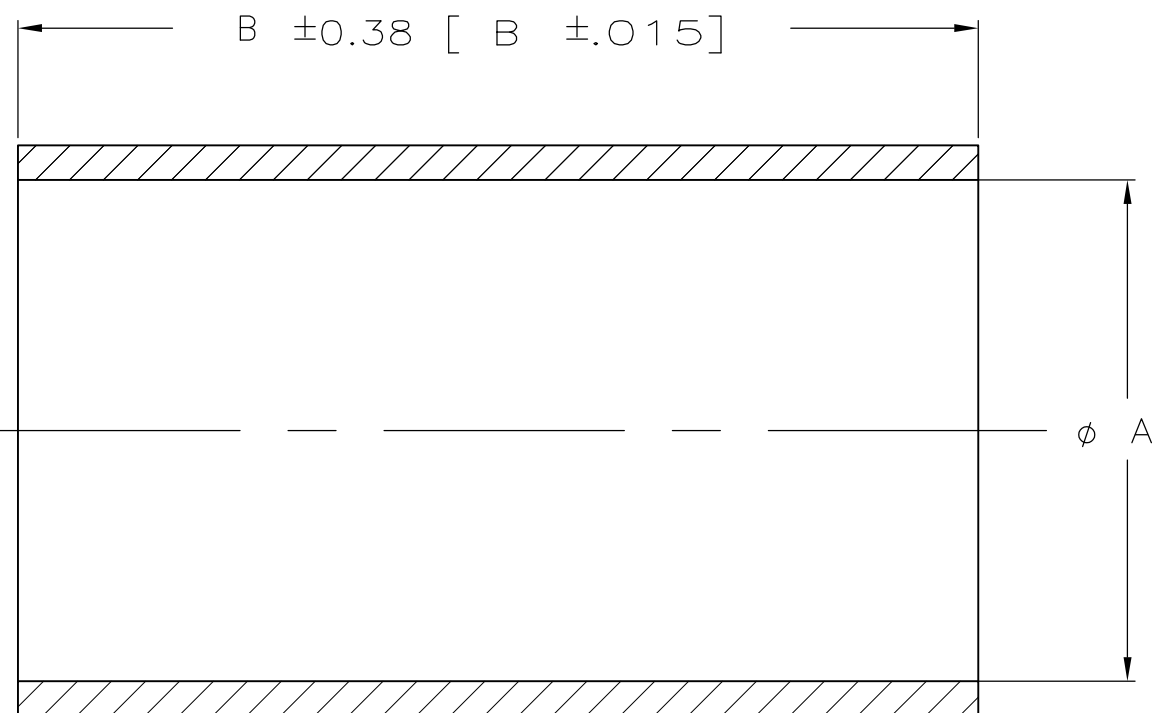
OBSOLETE

OBSOLETE

OBSOLETE

OBSOLETE

OBSOLETE



12.70 [.500]	6.81 [.268]	4	1	9-221132-9
15.24 [.600]	10.67 [.420]	4	1	9-221132-8
12.70 [.500]	5.84 [.230]	4	1	9-221132-7
12.70 [.500]	4.47 [.176]	4	1	9-221132-6
15.24 [.600]	11.30 [.445]	4	1	9-221132-5
12.70 [.500]	5.84 [.230]	4	1	9-221132-4
12.70 [.500]	6.63 [.261]	4	1	9-221132-3
12.70 [.500]	8.46 [.333]	4	1	9-221132-2
12.70 [.500]	6.55 [.258]	4	1	9-221132-1
12.70 [.500]	5.36 [.211]	4	1	9-221132-0
12.70 [.500]	5.61 [.221]	4	1	8-221132-9
15.24 [.600]	10.67 [.420]	3	1	3-221132-7
12.70 [.500]	6.81 [.268]	2	1	3-221132-6
12.70 [.500]	4.47 [.176]	2	1	3-221132-3
12.70 [.500]	5.61 [.221]	2	1	3-221132-0
15.24 [.600]	11.30 [.445]	2	1	2-221132-9
12.70 [.500]	5.84 [.230]	2	1	2-221132-6
15.24 [.600]	10.67 [.420]	2	1	2-221132-3
12.70 [.500]	6.63 [.261]	2	1	2-221132-0
12.70 [.500]	3.43 [.135]	3	1	1-221132-7
12.70 [.500]	6.55 [.258]	3	1	1-221132-4
12.70 [.500]	5.61 [.221]	3	1	1-221132-3
12.70 [.500]	5.36 [.211]	3	1	1-221132-0
12.70 [.500]	8.46 [.333]	2	1	221132-9
12.70 [.500]	6.55 [.258]	2	1	221132-6
12.70 [.500]	5.36 [.211]	2	1	221132-3
B	A	FINISH	MATERIAL	PART NUMBER

THIS DRAWING IS A CONTROLLED DOCUMENT.		DWN J.L.GROFT 1-5-90	Tyco Electronics Corporation Harrisburg, PA 17105-3608	
DIMENSIONS: MM [INCHES]		CHK R.E.RUTH 1/12/90	NAME	
TOLERANCES UNLESS OTHERWISE SPECIFIED: 0 PLC ± - 1 PLC ± - 2 PLC ± 0.13 [.005] 3 PLC ± - 4 PLC ± - ANGLES ± -		APVD -	FERRULE	
MATERIAL SEE NOTES		PRODUCT SPEC -	SIZE A3	CAGE CODE 00779
FINISH SEE NOTES		APPLICATION SPEC -	DRAWING NO G-221132	RESTRICTED TO -
CUSTOMER DRAWING		WEIGHT -	SCALE 10:1	SHEET 1 OF 1
		REV Z		

# Mouser Electronics

Authorized Distributor

Click to View Pricing, Inventory, Delivery & Lifecycle Information:

[TE Connectivity:](#)

[9-221132-3](#)