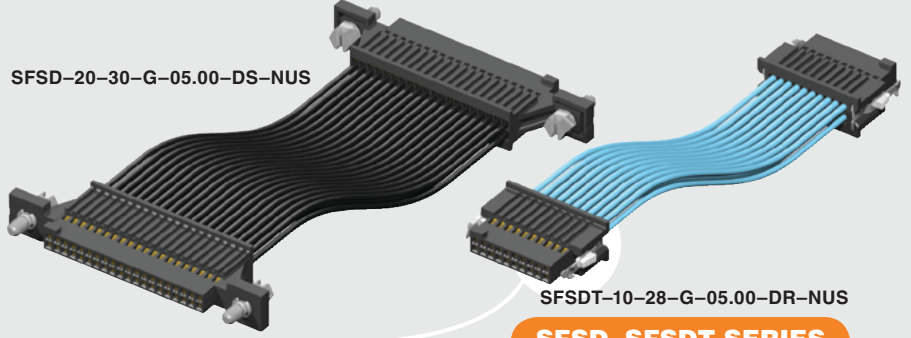


SFSD-20-30-G-05.00-DS-NUS



SFSDT-10-28-G-05.00-DR-NUS

SFSD, SFSDT SERIES

(1.27 mm) .050"

TIGER EYE™ DISCRETE CABLE ASSEMBLY

SPECIFICATIONS

For complete specifications see www.samtec.com?SFSD or www.samtec.com?SFSDT

Insulator Material:
Black LCP

Contact Material:
BeCu

Plating:

Au over 50 μ" (1.27 μm) Ni
Current Rating (SFSD/TFC):
2.9 A per pin
(2 pins powered)

Operating Temp Range:
-10 °C to +80 °C (PVC)
-40 °C to +125 °C (*Teflon®)

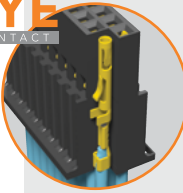
Voltage Rating:
275 VAC (PVC)
235 VAC (*Teflon®)

Wire: 28 or 30 AWG

RoHS Compliant:
Yes

*DuPont™ Teflon® is a registered trademark of the E.I. du Pont de Nemours and Company or its affiliates.

Mates with:
TFM, TFC
(-SR & -DR requires
-WT option)



-SR/-DR APPLICATIONS

When Mated to TFM-WT

Terminal/Housing Retention	
Min	(22.25 N) 5.0 lb
Max	(26.52 N) 5.96 lb
Avg	(24.34 N) 5.47 lb

Wire/Crimp Retention	
Min	(20.47 N) 4.6 lb
Max	(36.49 N) 8.2 lb
Avg	(29.95 N) 6.73 lb

ALSO AVAILABLE (MOQ Required)

- Other sizes
- Locking feature for mating to the TFML Series
- Color coded cable (*Teflon® N/A)
- Other plating options

Single or double ended

Retention latch and screw down options

28 or 30 AWG

RECOGNITIONS

For complete scope of recognitions see www.samtec.com/quality



FILE NO. E111594

COMPONENTS

- For body, see www.samtec.com?ISDF
- For contacts, see www.samtec.com?CC03R
www.samtec.com?CC03M

APPLICATION

-28C CABLE COLOR CODING	
PIN	COLOR
1	BROWN
2	RED
3	ORANGE
4	YELLOW
5	GREEN
6	VIOLET
7	GRAY
8	WHITE
9	BLACK
10	BLUE
ETC	REPEAT

Notes:
For wiring option and pin position location information, refer to drawings on web.

Some lengths, styles and options are non-standard, non-returnable.

TYPE STRIP	POSITIONS PER ROW	WIRE GAUGE	PLATING OPTION	ASSEMBLED LENGTH	END OPTION	END 2 OPTION
SFSD = Double Row PVC Cable SFSDT = Double Row *Teflon® Cable	-03, -04, -05, -07, -10, -15, -20, -25, -40, -50 (Standard sizes)	-28 = 28 AWG -28C = Color Coded Cable (SFSD only) -30 = 30 AWG	-G = 10 μ" (0.25 μm) Gold on contact, Gold Flash on balance	-"XX.XX" = Assembled Length in Inches (76.20 mm) 03.00" min. for -S end option (82.60 mm) 03.25" min. for -D end option	-S = Single Ended -D = Double Ended For -(X) specify "S" for single ended and "D" for double ended. -(X)R = Retention Latch (TFM-WT option required for mating) -(X)S = Screw Down (Not available in -03, -04 & -50 positions) (Mates with TFM-DS option)	Requires -D, -DS, -DR (End 1 Notch Up) -NUS = Notch up, straight (Pin 1 to Pin N-1) -NDS = Notch down, straight (Pin 1 to Pin 2) -NUS = Notch up, crossed (Pin 1 to Pin N) -NDX = Notch down, crossed (Pin 1 to Pin 1)

Note: Teflon® cable is intended for crimp only. Contact Samtec for solderable cable applicators.

Due to technical progress, all designs, specifications and components are subject to change without notice.

WWW.SAMTEC.COM

All parts within this catalog are built to Samtec's specifications. Customer specific requirements must be approved by Samtec and identified in a Samtec customer-specific drawing to apply.

Mouser Electronics

Authorized Distributor

Click to View Pricing, Inventory, Delivery & Lifecycle Information:

Samtec:

[SFSD-30-28-G-09.00-DR-NDX](#) [SFSD-30-28-G-10.00-D-NDS](#) [SFSD-30-28-G-13.00-DR-NDX](#) [SFSD-30-28-G-13.20-DR-NDX](#) [SFSD-30-28-G-24.02-D-NDX](#) [SFSD-30-28-G-31.50-DR-NDX](#) [SFSD-20-28C-G-03.26-D-NDS](#) [SFSD-20-28C-G-24.00-D-NDS](#) [SFSD-20-28C-G-36.00-D-NUS](#) [SFSD-20-28-F-03.94-DR-NDX](#) [SFSD-20-28-F-04.75-D-NUS](#) [SFSD-20-28-G-03.26-S](#) [SFSD-20-28-G-05.50-DR-NDX](#) [SFSD-20-28-G-11.00-D-NDX](#) [SFSD-20-28-G-11.50-DR-NDS](#) [SFSD-20-28-G-18.00-D-NDX](#) [SFSD-20-28-G-40.00-SR](#) [SFSD-20-28-G-80.00-DS-NDX](#) [SFSD-20-28-G-82.60-S](#) [SFSD-20-28-G-99.00-DL-NDX](#) [SFSD-20-30C-G-05.50-DR-NDX](#) [SFSD-20-30-G-03.25-DR-NDS](#) [SFSD-20-30-G-24.00-D-NDX](#) [SFSD-20-30-G-36.00-S](#) [SFSD-20-30-H-10.00-DR-NUS](#) [SFSD-25-28C-G-03.25-D-NDS](#) [SFSD-25-28-F-08.00-D-NUS](#) [SFSD-25-28-F-10.00-SR](#) [SFSD-25-28-G-04.72-DS-NDX](#) [SFSD-25-28-G-05.00-DL-NUS](#) [SFSD-25-28-G-17.70-D-NDX](#) [SFSD-25-28-G-40.00-SR](#) [SFSD-25-28-G-47.25-DR-NDX](#) [SFSD-25-28-G-48.00-S](#) [SFSD-25-30-F-24.00-DL-NDX](#) [SFSD-20-28-G-03.94-DR-NUS](#) [SFSD-20-28-G-05.00-DS-NDX](#) [SFSD-20-28-G-05.91-D-NDX](#) [SFSD-20-28-G-11.60-SR](#) [SFSD-20-28-G-12.00-DL-NDX](#) [SFSD-20-28-G-32.00-SR](#) [SFSD-20-28-G-60.00-D-NDX](#) [SFSD-20-28-G-72.00-D-NDX](#) [SFSD-20-28-H-03.50-D-NDX](#) [SFSD-20-30C-G-07.50-DR-NDX](#) [SFSD-20-30C-G-13.00-DR-NDX](#) [SFSD-20-30-G-03.50-DR-NDX](#) [SFSD-20-30-G-05.00-D-NDX](#) [SFSD-25-28C-H-18.00-SR](#) [SFSD-25-28-G-05.12-DL-NDX](#) [SFSD-25-28-G-07.00-D-NUS](#) [SFSD-25-28-G-07.50-S](#) [SFSD-25-28-G-16.00-D-NDX](#) [SFSD-25-30-F-03.26-D-NDS](#) [SFSD-25-30-G-04.00-D-NUS](#) [SFSD-25-30-G-04.50-SS](#) [SFSD-25-30-G-06.00-DR-NDX](#) [SFSD-30-28-G-10.00-DL-NDX](#) [SFSD-30-28-G-30.00-S](#) [SFSD-30-28-G-48.00-DR-NDX](#) [SFSD-30-28-H-11.00-S](#) [SFSD-30-30-G-12.00-DL-NDX](#) [SFSD-30-30-G-12.00-DR-NDX](#) [SFSD-32-28-G-40.00-DS-NUS](#) [SFSD-20-30C-G-14.00-DR-NDS](#) [SFSD-20-30C-G-14.50-DR-NDX](#) [SFSD-20-30-G-03.25-D-NDX](#) [SFSD-20-30-G-03.25-DS-NUS](#) [SFSD-20-30-G-05.91-D-NDS](#) [SFSD-20-30-G-07.80-SR](#) [SFSD-20-30-G-24.00-D-NUS](#) [SFSD-25-28C-F-48.00-S](#) [SFSD-25-28C-G-09.84-DS-NDX](#) [SFSD-25-28-F-05.00-SR](#) [SFSD-25-28-G-05.00-D-NDX](#) [SFSD-25-28-G-08.00-D-NUS](#) [SFSD-25-28-G-08.00-SS](#) [SFSD-25-28-G-10.00-SS](#) [SFSD-25-28-G-11.81-DR-NUS](#) [SFSD-25-28-G-19.69-DR-NUS](#) [SFSD-25-28-G-19.70-SR](#) [SFSD-25-28-G-80.00-DR-NDX](#) [SFSD-25-30-F-24.00-S](#) [SFSD-25-30-G-25.00-DR-NDS](#) [SFSD-25-30-G-31.50-SR](#) [SFSD-30-28-G-08.00-D-NUS](#) [SFSD-30-28-G-15.00-D-NUS](#) [SFSD-30-28-G-16.00-D-NDX](#) [SFSD-07-30-G-10.00-DR-NDX](#) [SFSD-07-30-G-11.00-D-NUS](#) [SFSD-07-30-G-18.00-S](#) [SFSD-07-30-G-19.69-SR](#) [SFSD-08-28-G-06.00-SR](#) [SFSD-10-28C-G-12.00-DR-NDX](#) [SFSD-10-28C-G-14.00-SL](#) [SFSD-10-28-F-03.94-DR-NDX](#) [SFSD-10-28-F-04.00-D-NUS](#) [SFSD-10-28-F-19.70-DR-NUS](#) [SFSD-10-28-G-03.94-D-NUS](#) [SFSD-10-28-G-09.85-DR-NDX](#)