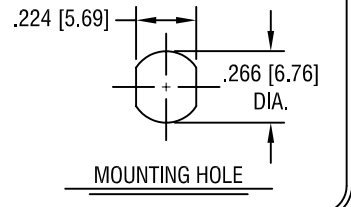
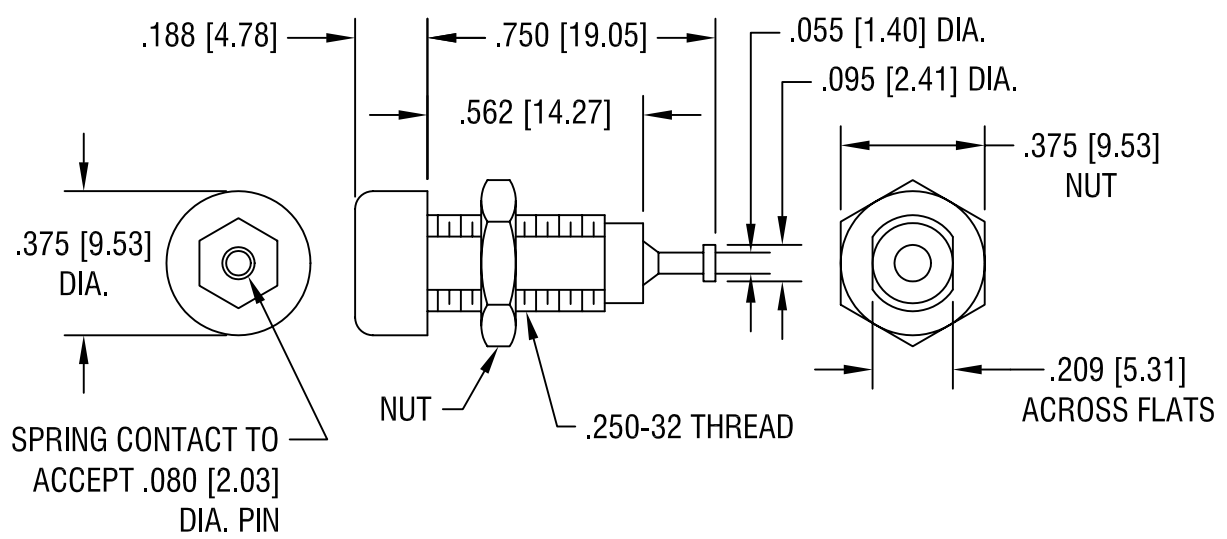


THIS DOCUMENT IS THE PROPERTY OF KEYSTONE ELECTRONICS CORP. AND SHALL NOT BE REPRODUCED, DISTRIBUTED OR USED AS A BASIS FOR MANUFACTURE WITHOUT PRIOR WRITTEN PERMISSION FROM KEYSTONE ELECTRONICS CORP.



**RATINGS:**

CURRENT: 10 AMPS  
 BREAKDOWN VOLTAGE: 5700 V RMS  
 CONTACT RESISTANCE: 0.010 OHMS MAX.  
 CONTACT-TO-PANEL C: 2 pF NOMINAL



**NOTES:**

1. CONTACT:  
 MAT'L - BRASS BODY WITH WRAP AROUND BERYLLIUM COPPER SILVER PLATED SPRING.  
 BODY:  
 MAT'L - NYLON 6/6 PER ASTM D4066
2. NUT: BRASS, NICKEL PLATED, SUPPLIED UNASSEMBLED.

PART NO.	COLOR
6030	WHITE
6031	RED
6032	BLACK
6033	GREEN
6034	YELLOW
6035	BLUE

<b>KEYSTONE ELECTRONICS CORP.</b>			
ASTORIA, N.Y. 11105-2017			
PART NAME		INSULATED TIP JACK	
MATERIAL		AS NOTED	
FINISH		DRN BY	DATE
AS NOTED		BOONE	12.10.82
		APPD	SCALE
		LN	2X
TOLERANCES	INCH [MM]	CODE	DWG NO.
DECIMAL	± .010 [± 0.25]	C/M	<b>6030-6035</b>
ANGULAR	± 1°		
UNLESS OTHERWISE SPECIFIED			

2.5.03	CHANGE AS PER ECN 03-009	A
DATE	DESCRIPTION	REV.

# Mouser Electronics

Authorized Distributor

Click to View Pricing, Inventory, Delivery & Lifecycle Information:

[Keystone Electronics:](#)

[6031](#)