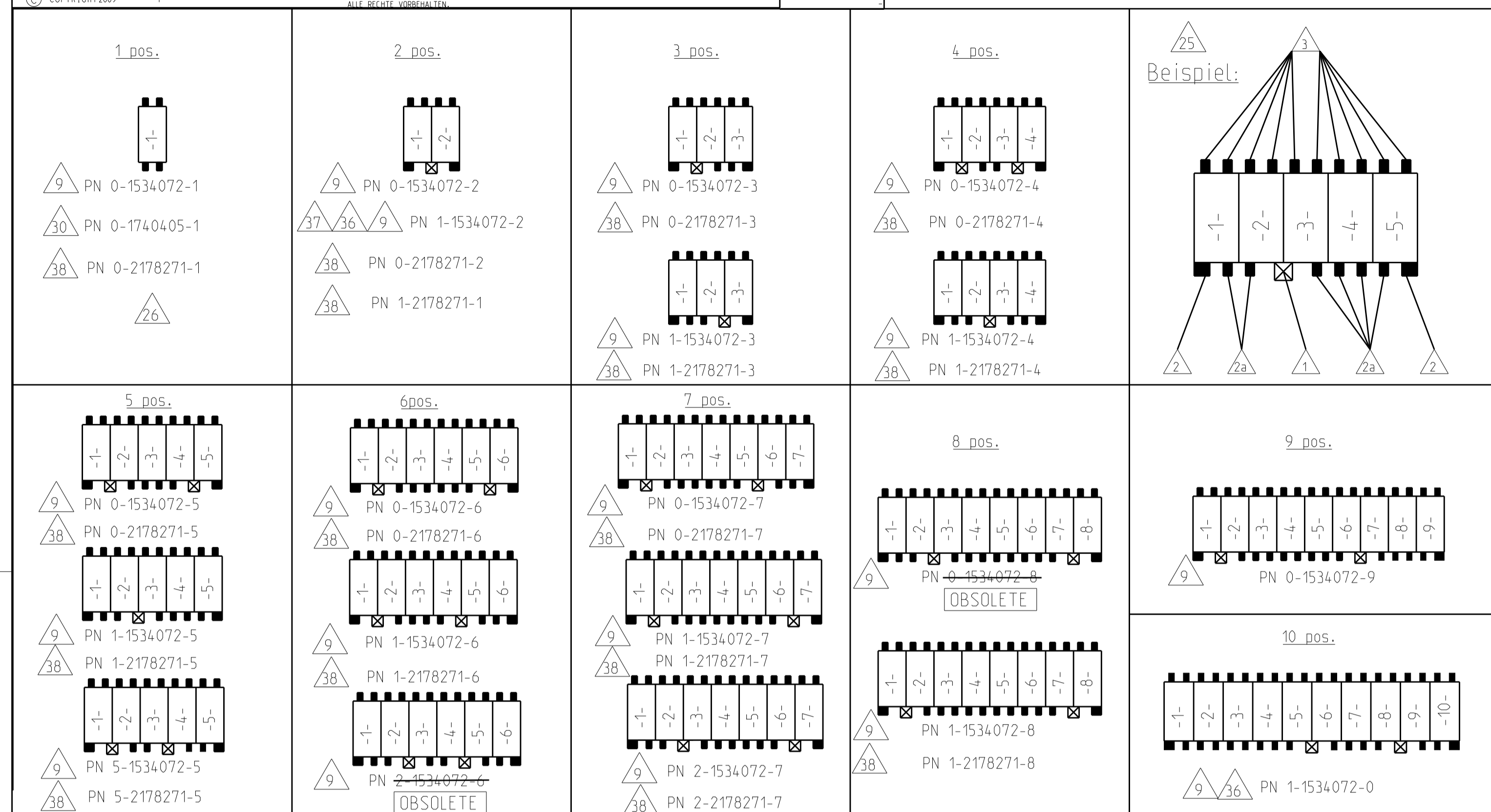
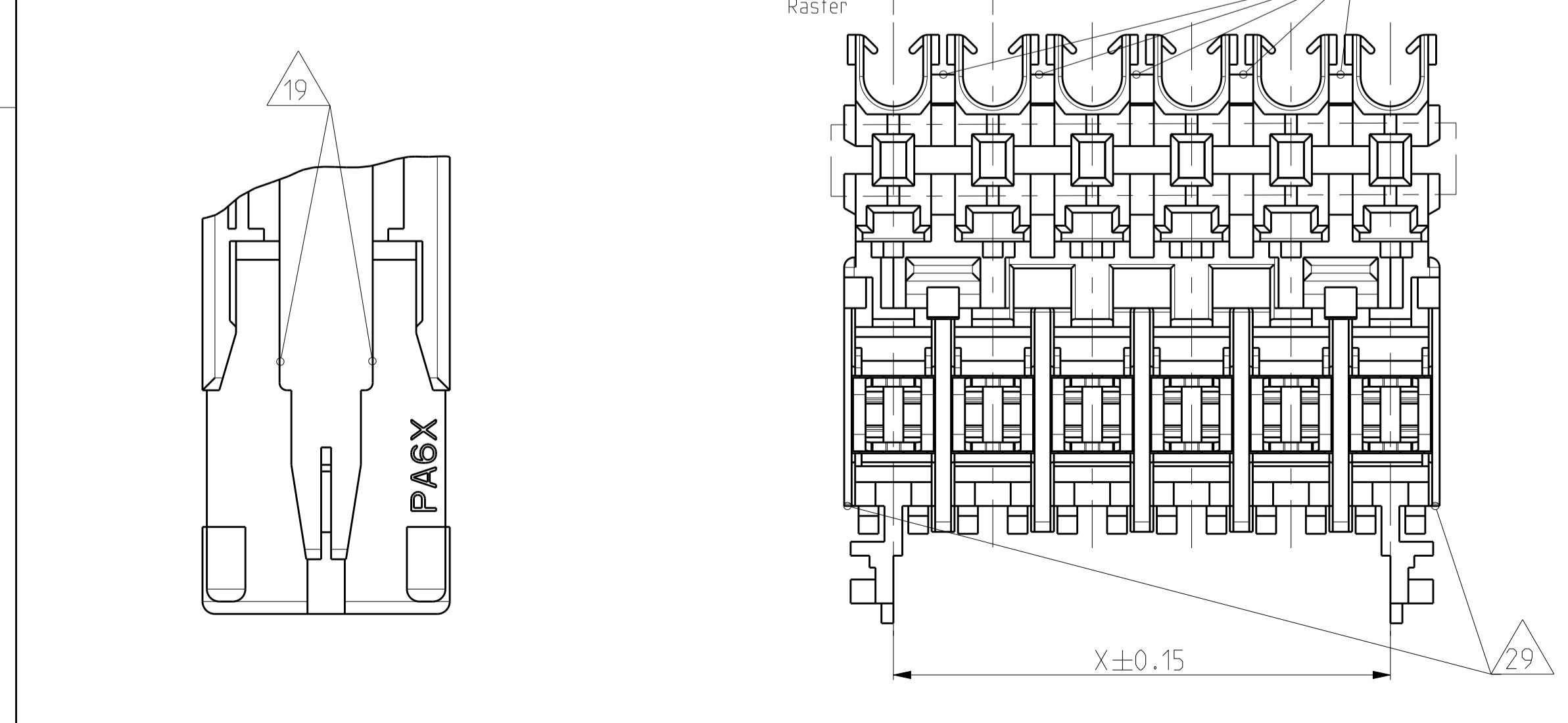
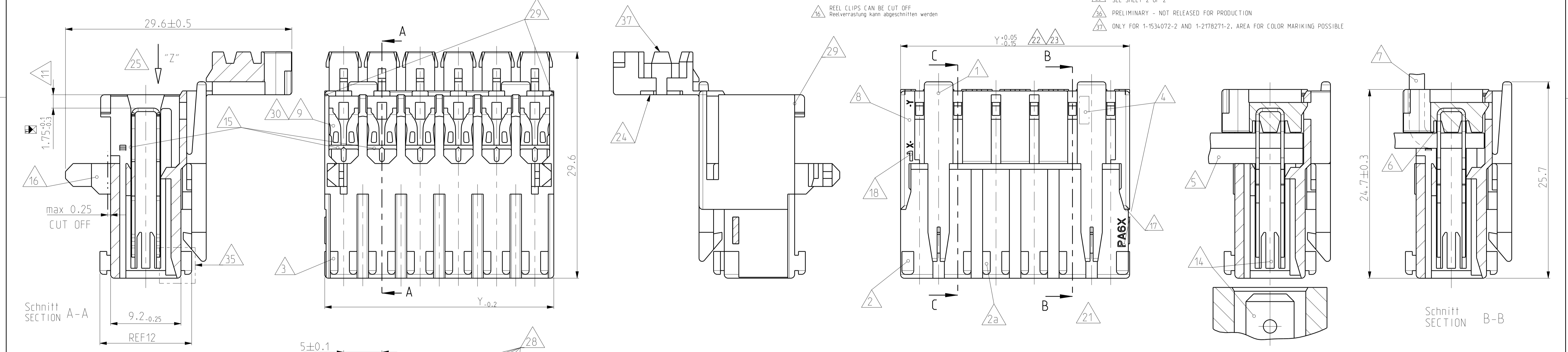


LOC	DIST	REVISIONS	DATE	DWN	APVD
A1	-	REVISIONS AENDERNEN			
		DESCRIPTION BESCHREIBUNG			
			29NOV2016	KD	RR
			06JUL2017	LZ	RR
			16OCT2017	KD	RR



- LOCKING DEVICE BETWEEN CAVITY-NO. Verrastung zwischen Kammer-Nr.
- KEYING RIB ON FIRST AND LAST CAVITY Kodierrippen bei erster und letzter Kammer SEE 31
- TYPICAL KEYING RIB Typische Kodierrippen SEE 19
- POLARIZATION RIB (ALL) Polarisierungsrippen (alle) SEE 19
- TE LOGO, MATERIAL DESCRIPTION (PA6) TE LOGO, Materialbezeichnung (PA6)
- CONNECTOR WITH DOUBLE WIRE FOR WIRE RANGE: (ONLY 1) 0.5-0.5, 0.5-0.75. ISEE APPL.SPEC.ND.114-18288 Connector mit Doppelanschlag fuer Litze: 0.35-1.5mm² (siehe Appl.-Spec.Nr.114-18288)
- CONNECTOR WITH SINGLE WIRE FOR WIRE RANGE: (ONLY 1) 0.35-1.5mm² ISEE APPL.SPEC.ND.114-18288, 0.35-1.0mm² SEE 21 Connector mit Einzelanschlag fuer Litze: 0.35-1.5mm² (siehe Appl.-Spec.Nr.114-18288), 0.35-1.0mm² siehe 21
- STRANDED WIRE BENT TO 90° (ONLY FOR SINGLE WIRE POSSIBLE) Litze 90° gebogen (nur bei Einzelanschlag moeglich)
- TE NO. (HOUSING PN), PRE- AND SUFFIX ONLY TE Nr. (Gehaeuse PN), nur Vor- und Nachstrichzahl
- CAVITY LOADED WITH CONTACT FOR DGB 0.35-1.0mm² (CuZn30 POSTFINNED) Kammer bestueckt mit kontakt fuer DGB 0.35-1.0mm² (CuZn30 posttinnend)
- PACKAGING SEE SPEC. 107-18008 Verpackung siehe Verpackungsanweisung 107-18008
- CONTACT POSITION IN CAVITY Kontaktlage in Kammer
- ASSY PN, ONLY PRE- AND SUFFIX; ATTENTION: IDENTIFICATION OF THE COMPLETE ASSY PN ONLY POSSIBLE WITH PRE-, SUFFIX, MATERIAL AND CHART. THE COMPLETE ASSY PN IS VISIBLE ON PACKAGING. Ass'y PN, nur Vor- und Nachstrichzahl. Achtung: Identifizierung der kompletten Ass'y PN nur mit Vor-, Nachstrichzahl, Material und Tabelle moeglich. Die komplette Ass'y PN ist auf der Verpackung ersichtlich.
- NOTE 2, 2a, 3 IN PROCESS CUT OFF INDIVIDUAL Im Prozess beliebig abschneidbar
- SLOT ACCEPT TAB 6.3x0.8, 4.8x0.8 AT DIN e.g. 46244 Kontaktbereich geeignet fuer Tab 6.3x0.8, 4.8x0.8 nach DIN z.B. 46244
- WIRE SUPPORT Drahtunterstuetzung
- REEL CLIPS CAN BE CUT OFF Reelverrastung kann abgeschnitten werden
- MATING STOP Tiefenanschlag
- HSG. CAVITY NO.1 Gehaeuse Kammer Nr.1
- SPECIAL LOCKING DEVICE ONLY 2POS. HOUSING Besondere Haengegeometrie nur bei 2pot. Gehaeuse
- MAX. 4 STRANDED WIRE 1.0mm² IF USING CONTACT 21 Max. 4 Litzen 1.0mm² bei Bestueckung mit Kontakt 21
- VIEW WITH CLOSED COVER Ansicht mit geschlossenem Deckel gezeichnet
- EXPANSION OF DIMENSION "Y" AFTER TERMINATION BY USING 4 POS. CONNECTORS WITH 1.5mm² STRANDED WIRE AND 8 POS. CONNECTORS WITH 0.75mm² STRANDED WIRE SEE APPL. SPEC. Aufweitung Mass "Y" nach dem Anschlag bei 4pot. Connectoren mit 1.5mm² Litze und bei 8pot. Connectoren mit 0.75mm² Litze siehe Appl. Spec.
- FOR DOUBLE WIRE SEE APPL. SPEC. Bei Doppelanschlag siehe Appl. Spec.
- AREA FOR COLOUR MARKING POSSIBLE Platz fuer farbige Markierung moeglich
- KEYING, VIEW AT DIRECTION "Z" Kodierschema: Ansicht in Richtung "Z"
- CAVITY LOADED WITH CONTACT FOR DGB 0.35-1.0mm² (CuZn30 POSTFINNED) 38
- LOCKING DEVICE INSIDE OF THE HOUSING (ONLY 1POS. HOUSING) Verrastung innerhalb des Gehaeuses (nur bei 1pot. Gehaeuses) 39
- MATERIAL PA6 (GW T 750°C WITHOUT FLAME) Material PA6 (Guehrahrtueftung 750°C ohne Flamme) 40
- EXTENSION OF WALL, EXCLUDING 1POS. HOUSING ATTENTION: CHANGES TO BE IMPLEMENTED ON ALL TOOLS (10A AND 16A) Verl.ueberung der Zwischenwand, betrifft nicht 1pot. Variante Achtung: Aenderung in allen Werkzeugen, direkt und indirekt (10A und 16A) 41
- EXTERNAL WALLS FOR SNAPPING COVER TO BE REMOVED ON 2POS., 9POS. HOUSINGS Aeusere Waende an 2pot., 9pot. Varianten, um Deckel einzurasten, k.foennen entfernen
- CAVITY LOADED WITH CONTACT FOR DGB 0.35-1.0mm² (CuNiSi POSTSILVERED) Kammer bestueckt mit Kontakt fuer DGB 0.35-1.0mm² (CuNiSi versilbert)
- ATTENTION! NOTE 2, 2a, 3 ARE CURRENTLY BEING CHANGED IN THE TOOLS Achtung! Note 2, 2a, 3 werden zur Zeit im Werkzeug geaendert
- CONNECTION WITH TAB HEADER, SEE PN C97-52824-1000 Verbindung mit Tab Waenne, siehe PN C97-52824-1000
- ELASTIC DEFORMATION OUTWARDS IS ACCEPTABLE IN THE MARKED AREA (EXCLUDING 1 POS. CONNECTOR). WORKABILITY AND MODULARITY IS GRANTED. Elastische Verformung nach auessen ist im markierten Bereich zul.assig (ausser 1 pot. Connector). Verarbeitbarkeit bzw. Anreihbarkeit ist nicht gef.ordert.
- CONCERNS ONLY 2POS. VERSIONS 1 CHAMFER AT MIDDLE WALL ADDED) Betrifft nur 2 pot. Variante (Fase an mittlerer Rippe hinzu)
- ALTERNATE GEOMETRY IN HOUSING CAVITY IS PERMITTED FOR ALL VERSIONS UNTIL FURTHER NOTICE. SEE SHEET 2 OF 2
- PRELIMINARY - NOT RELEASED FOR PRODUCTION
- ONLY FOR 1-1534072-2 AND 1-2178271-2. AREA FOR COLOR MARKING POSSIBLE



POS.-NO. Polzahl	COLOR Farbe	HOUSING-NO. Gehaeuse-Nr.	ASSY NO. Assy Nr.	ASSY NO. Assy Nr.	DIM "X" Mass "X"	DIM "Y" Mass "Y"	
10	Natur	1-1534071-0	1-1534072-0	36	-	45	49.95
9	Natur	0-1534071-9	0-1534072-9	36	-	40	44.95
8	Natur	1-1534071-8	1-1534072-8	36	1-2178271-8	35	39.95
OBSOLETE							
8	Natur	0-1534071-8	0-1534072-8	36	-	35	39.95
7	Natur	2-1534071-7	2-1534072-7	36	2-2178271-7	30	34.95
7	Natur	1-1534071-7	1-1534072-7	36	1-2178271-7	30	34.95
7	Natur	0-1534071-7	0-1534072-7	36	0-2178271-7	30	34.95
OBSOLETE							
6	Natur	2-1534071-6	2-1534072-6	36	-	25	29.95
6	Natur	1-1534071-6	1-1534072-6	36	1-2178271-6	25	29.95
6	Natur	0-1534071-6	0-1534072-6	36	0-2178271-6	25	29.95
5	Natur	5-1534071-5	5-1534072-5	36	5-2178271-5	20	24.95
5	Natur	1-1534071-5	1-1534072-5	36	1-2178271-5	20	24.95
5	Natur	0-1534071-5	0-1534072-5	36	0-2178271-5	20	24.95
4	Natur	1-1534071-4	1-1534072-4	36	1-2178271-4	15	19.95
4	Natur	0-1534071-4	0-1534072-4	36	0-2178271-4	15	19.95
3	Natur	1-1534071-3	1-1534072-3	36	1-2178271-3	10	14.95
3	Natur	0-1534071-3	0-1534072-3	36	0-2178271-3	10	14.95
PRELIMINARY							
2	Black	0-1534071-2	1-1534072-2	36	1-2178271-2	5	9.95
2	Natur	0-1534071-2	0-1534072-2	36	0-2178271-2	5	9.95
1	Natur	0-1534071-1	0-1534072-1	36	0-2178271-1	-	4.95
1	Natur	0-1534071-1	0-1740405-1	36	-	-	4.95

Schnitt SECTION C-C

THIS DRAWING IS A CONTROLLED DOCUMENT. DATE OF MANUFACTURE IS TO BE OBTAINED FROM THE DRAWING. THIS DRAWING IS THE PROPERTY OF STP AND IS NOT TO BE REPRODUCED OR TRANSMITTED IN ANY FORM OR BY ANY MEANS, ELECTRONIC OR MECHANICAL, INCLUDING PHOTOCOPYING, RECORDING, OR BY ANY INFORMATION STORAGE AND RETRIEVAL SYSTEM.

MASSINGEN (mm)

TOLERANCES UNLESS OTHERWISE SPECIFIED: ALLE DIMENSIONEN

PL ±0.2
P ±0.2
P ±0.2
P ±0.2

FINISHES UNLESS OTHERWISE SPECIFIED: ALLE FINISIERUNGEN

FINISHES UNLESS OTHERWISE SPECIFIED: ALLE FINISIERUNGEN

MATERIAL: PA6

FINISHES UNLESS OTHERWISE SPECIFIED: ALLE FINISIERUNGEN

DWN: M. Ottenloch, ZBNOV01
CHK: G. Bartosch, ZBNOV01
APPV: T. Klenner, ZBNOV01

NAME: 1-10pos. AMP multifitting Mark II ASSEMBLY PITCH 5mm TAB VERSION

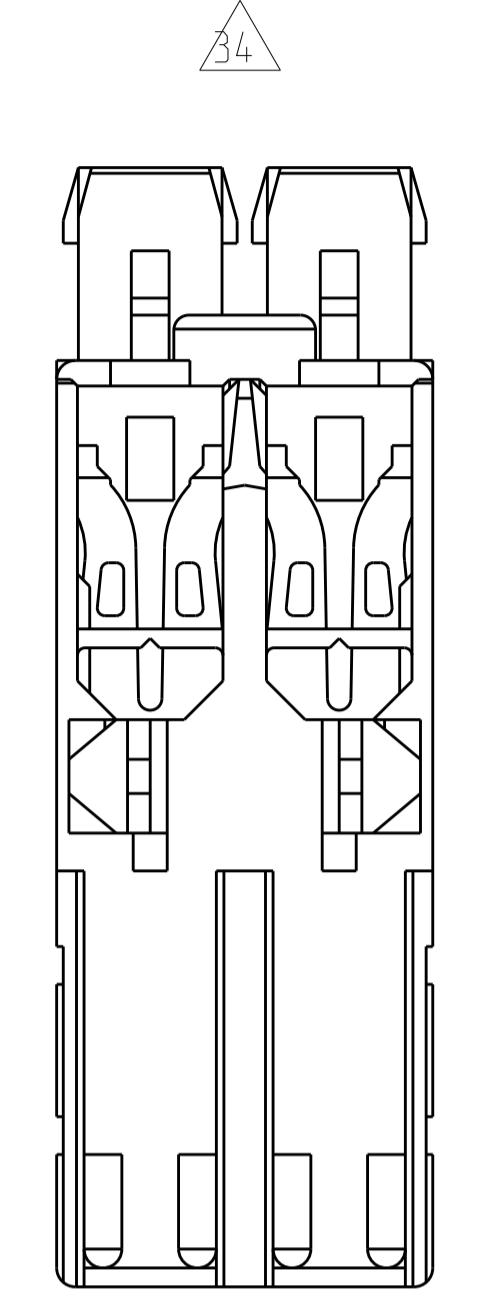
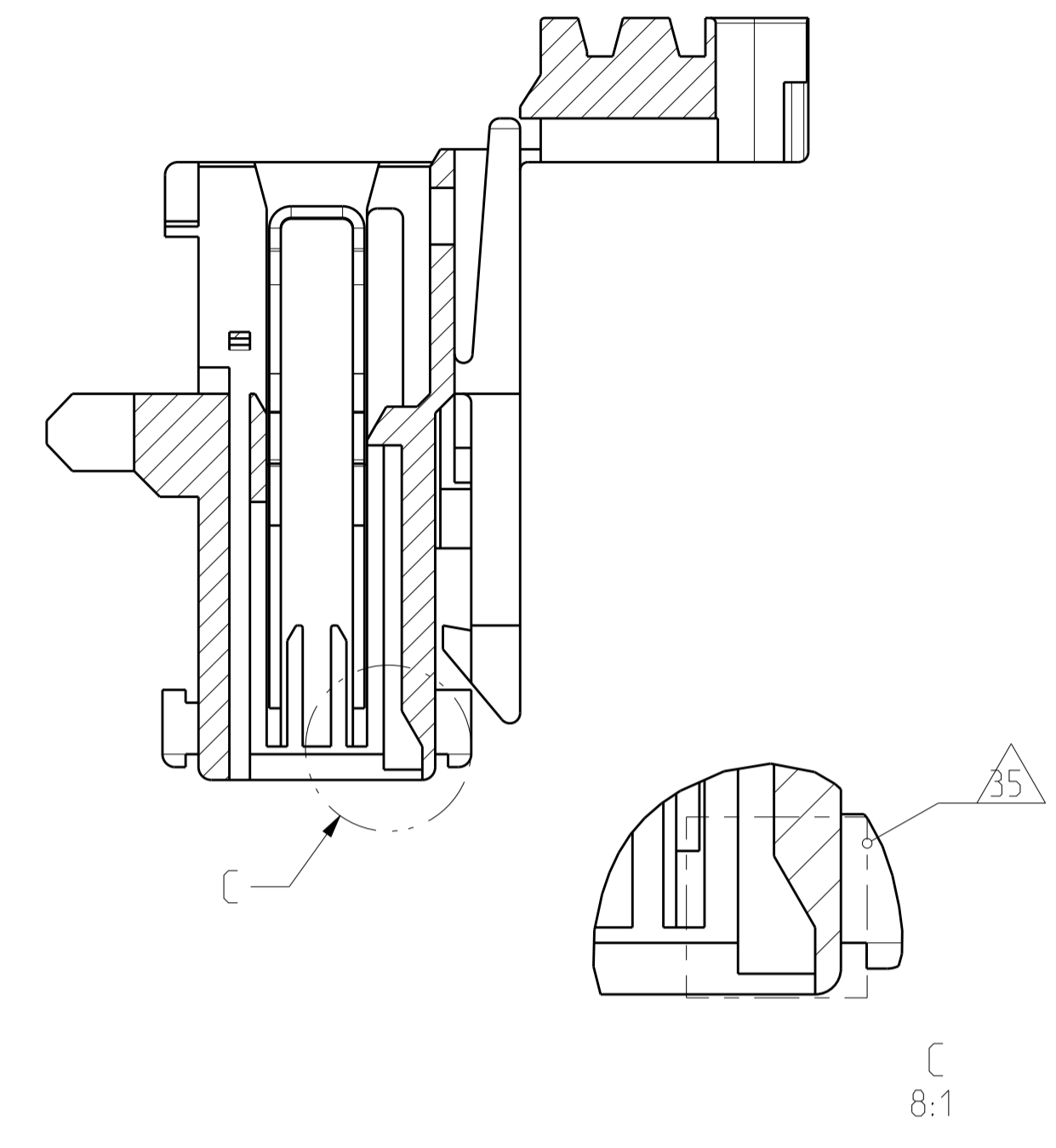
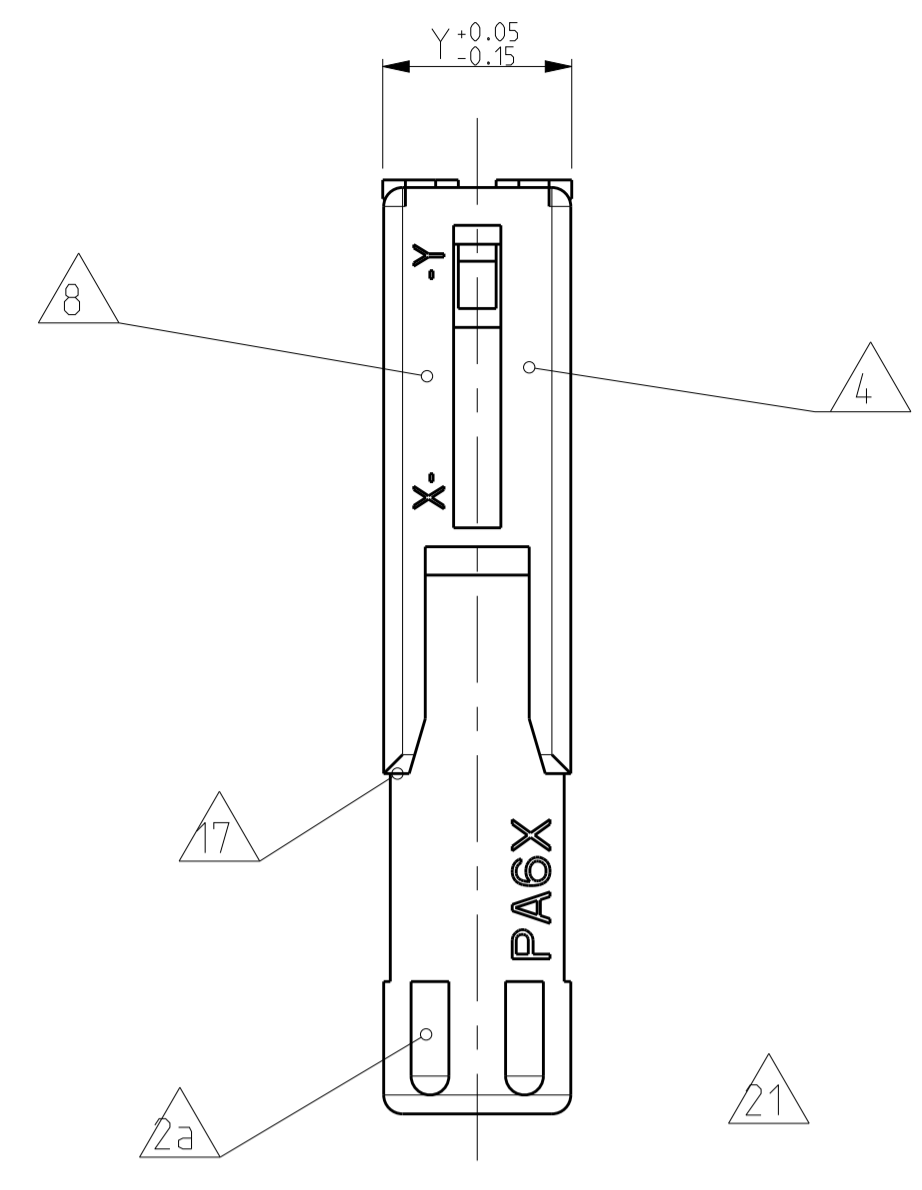
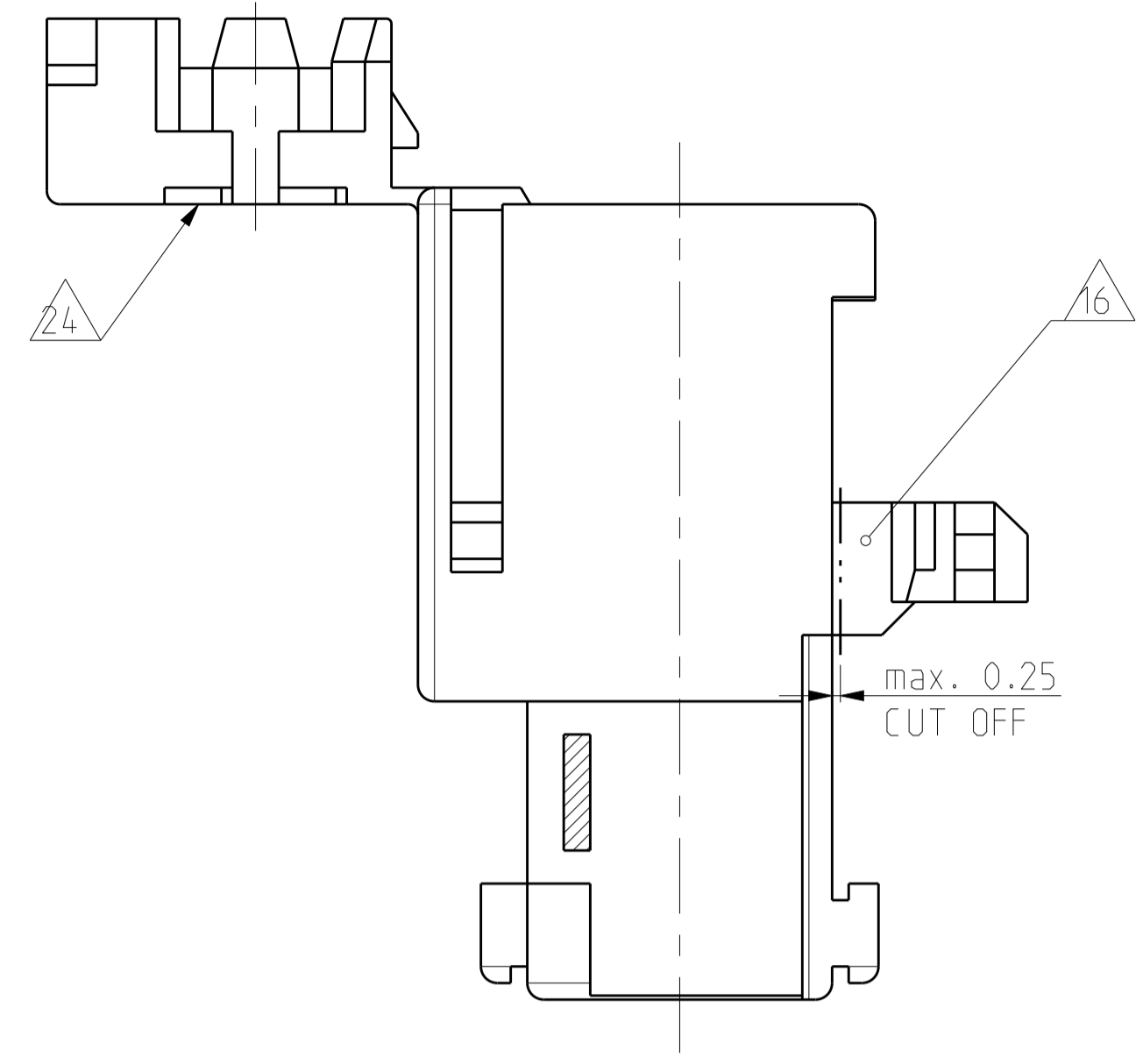
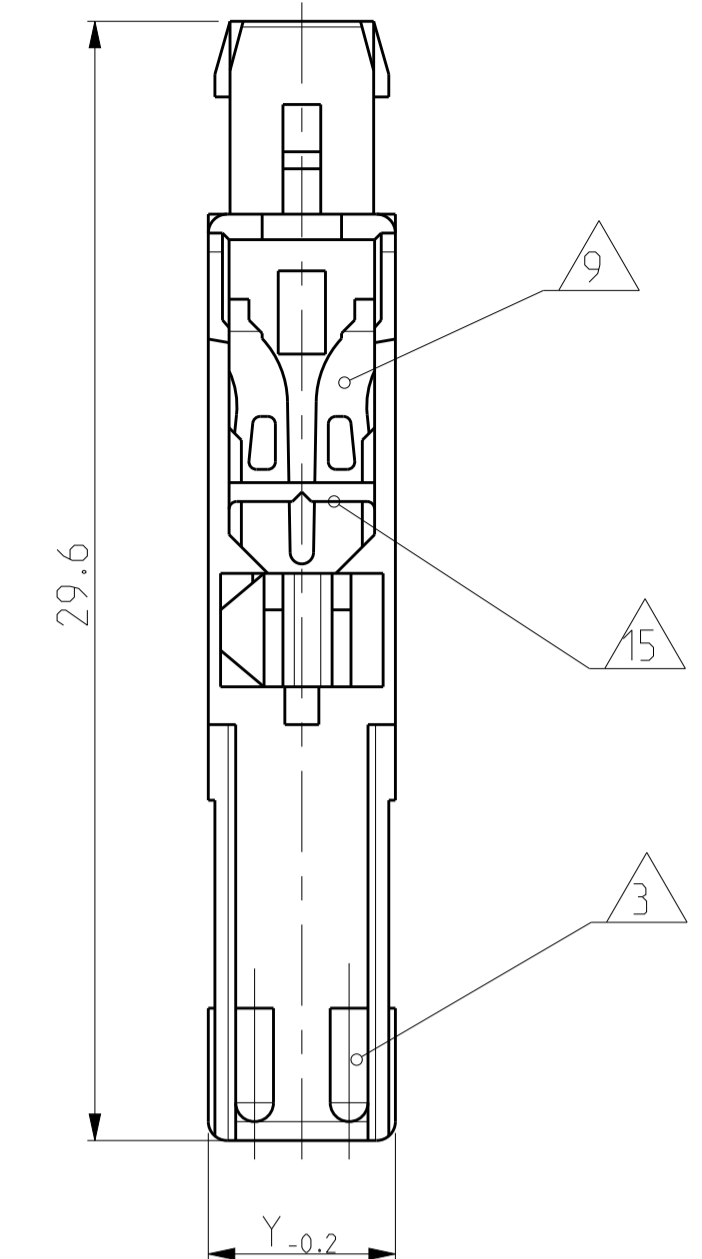
SIZE: A1, CAGE CODE: 00779, DRAWING NO: 1534072, DATE: 29NOV2016, SHEET: 1 OF 2, REV: K14

RESTRICTED TO: NUR FÜR: -

CUSTOMER DRAWING: /KUNDENZEICHNUNG, SCALE: MASSSTAB 4:1, SHEET: BLATT 1 OF 2, REV: K14

LOC	DIST	REV	DATE	APVD
A1	-	1	-	-
PRODUCT NO.:		SEE SHEET 1		

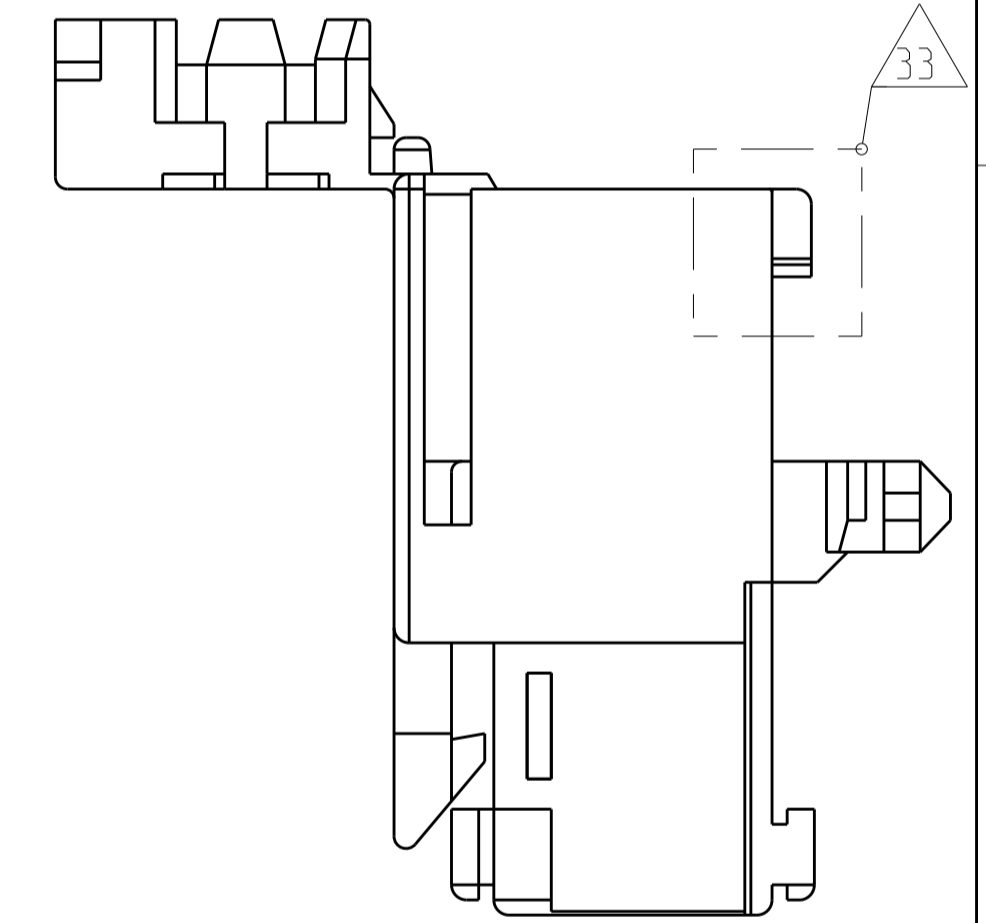
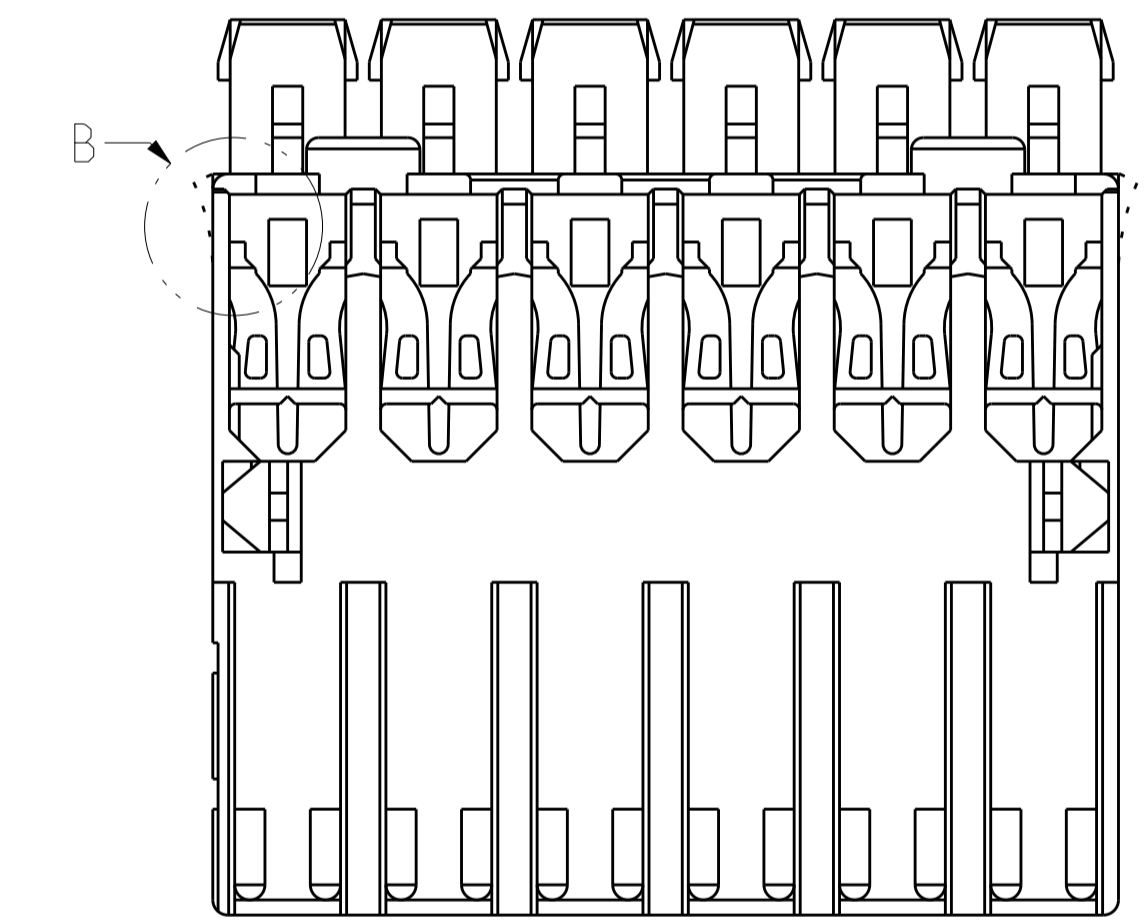
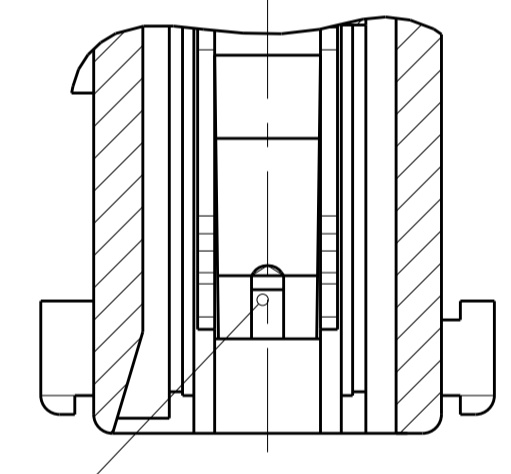
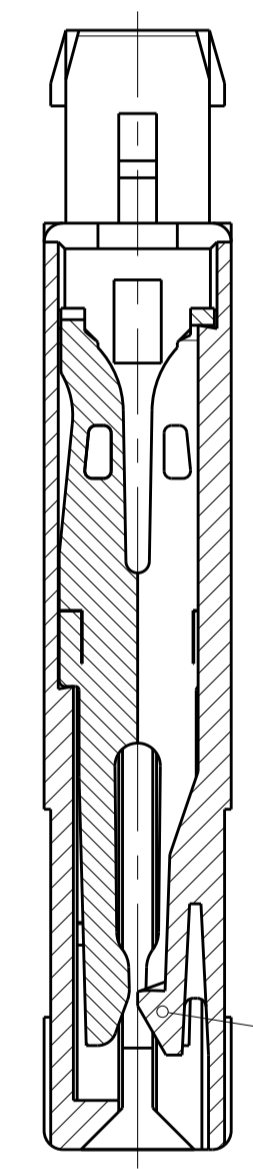
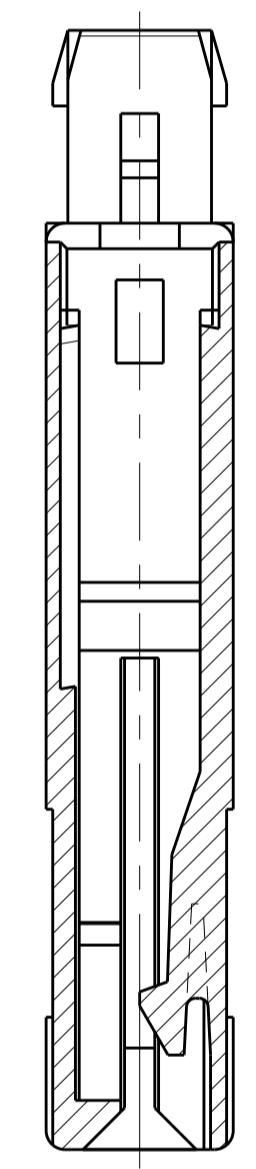
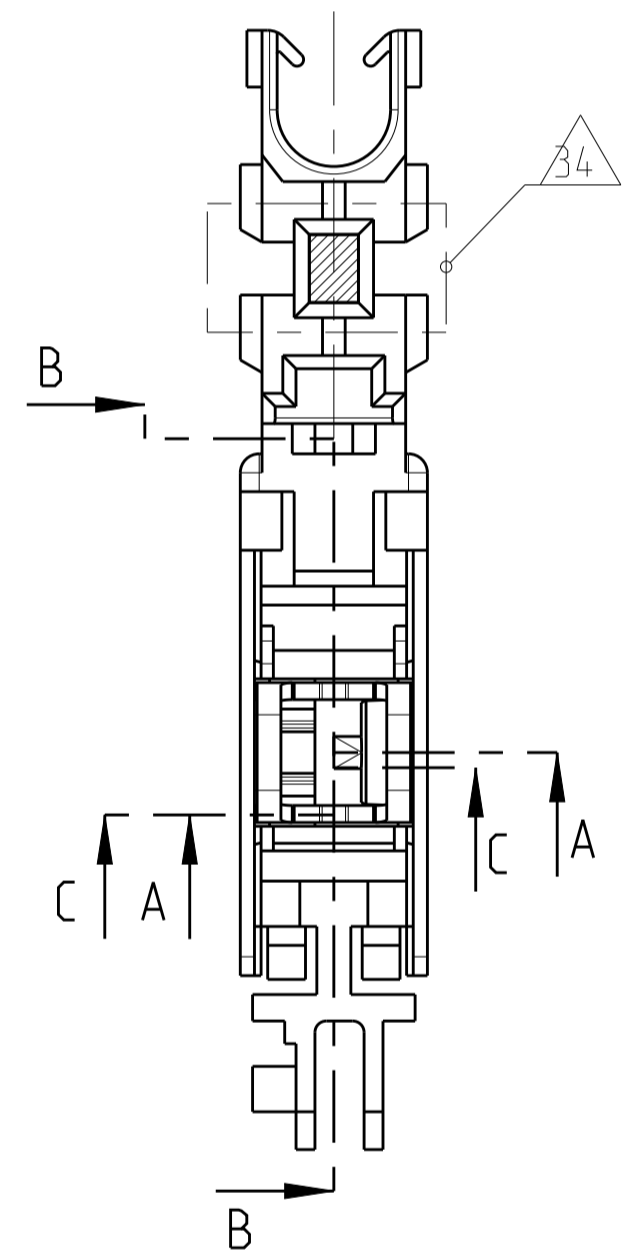
ALTERNATE GEOMETRY IN HOUSING CAVITY $\triangle 35$



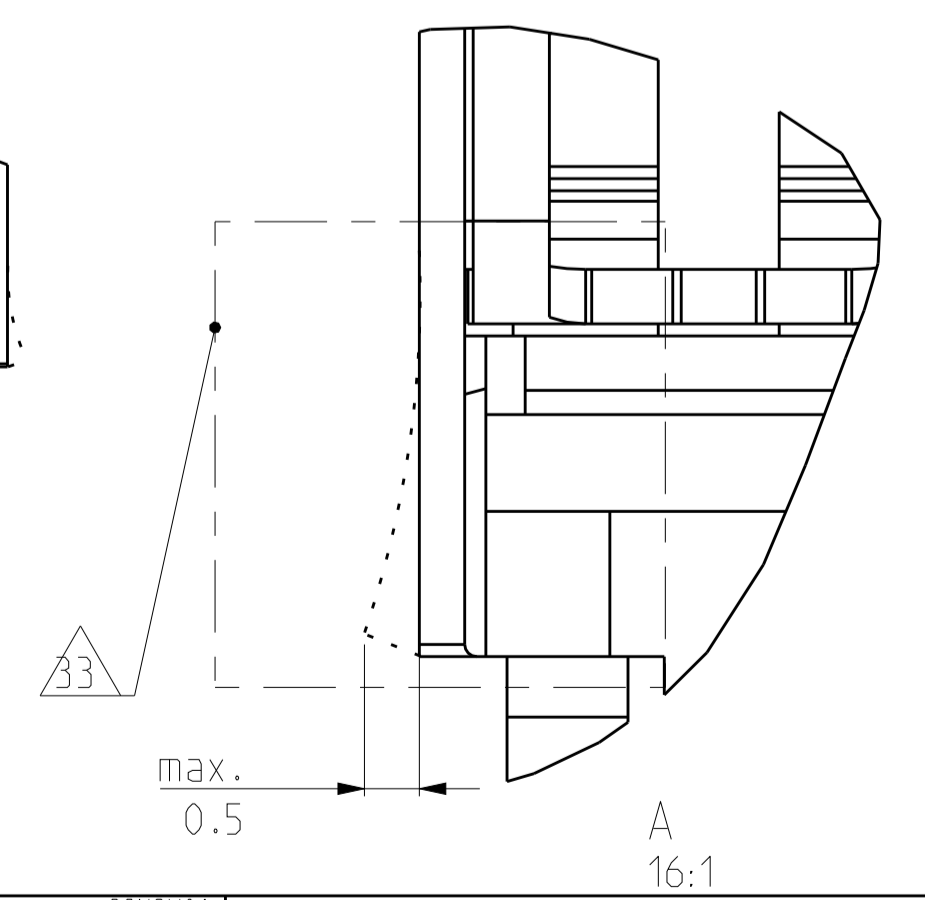
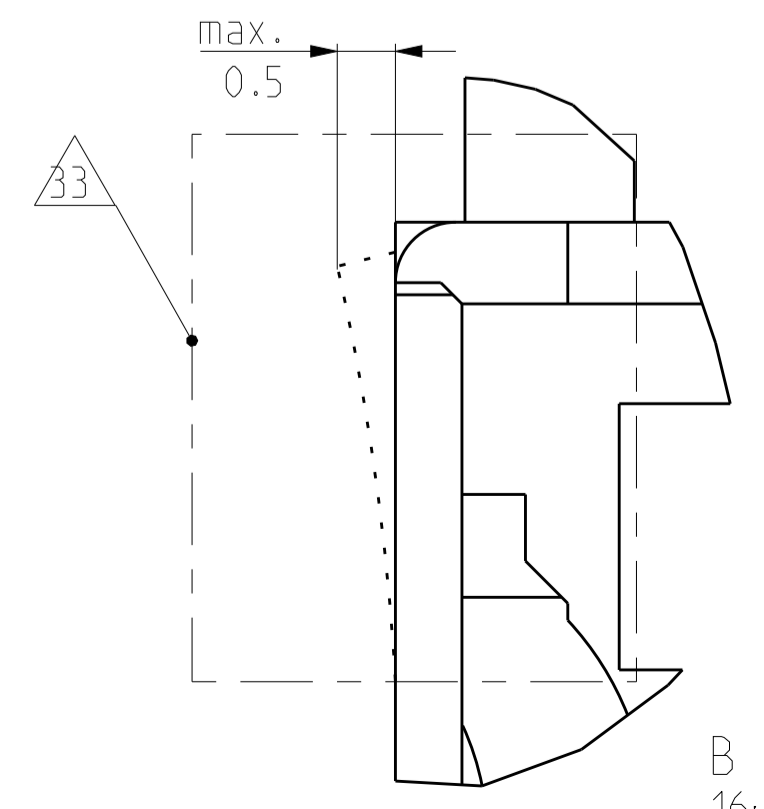
SECTION A-A
Schnitt

SECTION C-C
Schnitt

SECTION B-B
Schnitt



NOTES & TABLES, SEE SHEET 1
 Notizen & Tabellen, siehe Blatt 1



THIS DRAWING IS A CONTROLLED DOCUMENT. DIESER ZEICHNUNGSDRUCKER WIRD DURCH AMP REPRODUZIERT UND KONTROLLIERT. ANSONDERNEN, DIE SICH TECHNISCHE ANFORDERUNGEN BEZÜGLICH DER VERARBEITUNG ANFORDERN, SIND AN AMP ANZUGEBEN.		OWN: M. Ottenloch CHK: G. Bartosch APVD: In. Klenner	ZBNOV01 ZBNOV01 ZBNOV01	NAME: 1-10pos. AMP multifitting Mark II ASSEMBLY PITCH 5mm TAB VERSION	RESTRICTED TO NEW PUR.
DIMENSIONS: MILLIMETERS MASSENHEITEN: mm		TOLERANCES: UNLESS OTHERWISE SPECIFIED: ALL DIMENSIONS	PRODUCT SPEC: 108-10652 APPLICATION SPEC: 114-10200	SIZE: A1 CAGE CODE: 00779 DRAWING NO: 1534072	SCALE: 4:1 SHEET: 2 OF 2 REV: K14
MATERIAL: $\triangle 9$ $\triangle 27$ $\triangle 38$		FINISHES/SURFACE FINISHES: -	WEIGHT: - GEWICHT: -	CUSTOMER DRAWING: /KUNDENZEICHNUNG	

Mouser Electronics

Authorized Distributor

Click to View Pricing, Inventory, Delivery & Lifecycle Information:

[TE Connectivity:](#)

[1-1534072-5](#)