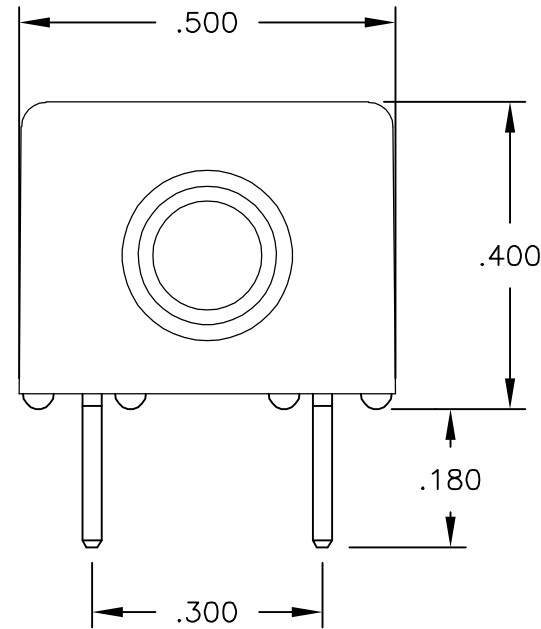
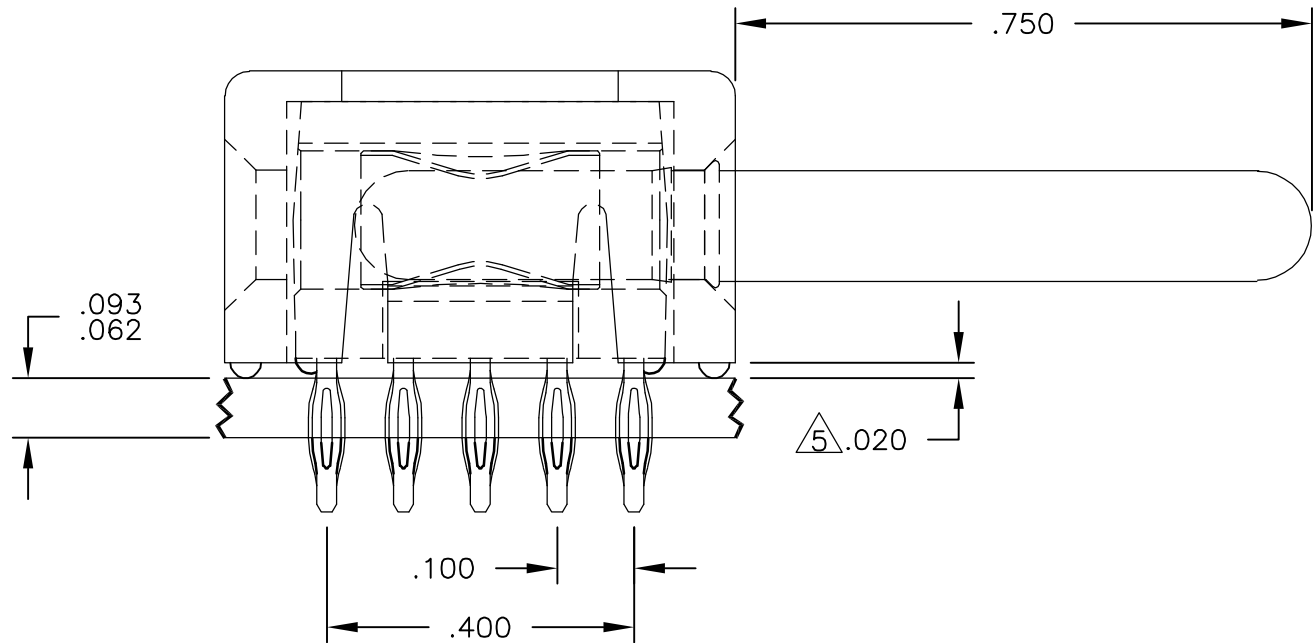


LOC	DIST	REVISIONS					
		P	LTR	DESCRIPTION	DATE	DWN	APVD
GP	00		A	RELEASED	06JAN06	RG	PD



6. REFERENCE TYCO ASSEMBLY PART NUMBER 6646258-1.

5 A FIVE-POUND (5lb) FORCES REQUIRED TO CORRECTLY SEAT THE CONNECTOR WITH PLATED THRU HOLES LESS THAN Ø.040 INCH.

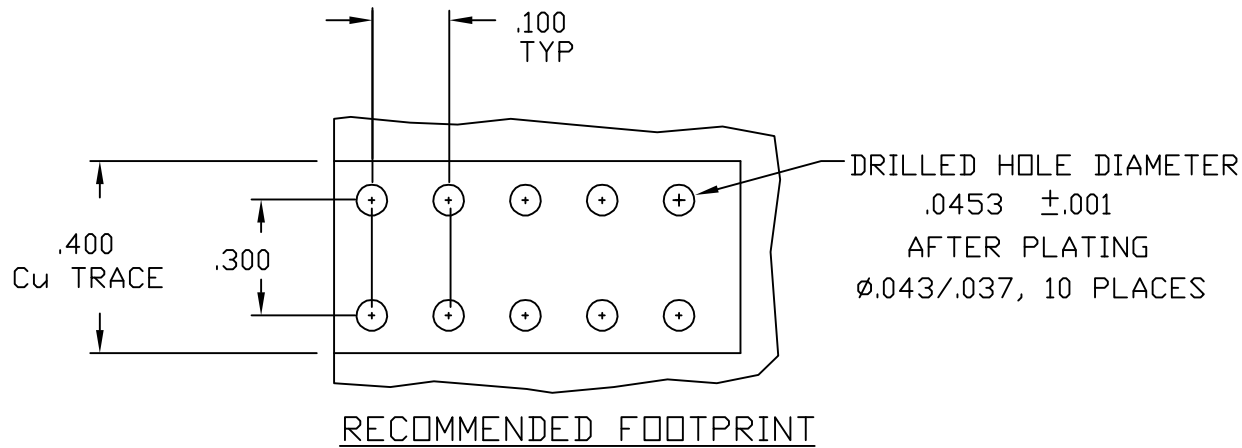
4. FINISH:
- INSULATOR - AS MOLDED COLOR BLACK
  - MODULE - SILVER PLATED
  - CROWN - GOLD PLATED
  - PIN CONTACT - GOLD PLATE
  - COMPLIANT PIN - SILVER PLATED

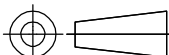
3. MATERIAL:
- INSULATOR - POLYESTER, GLASS FILLED, UL 94 V-0
  - MODULE - METAL CASTING
  - CROWN - BECU
  - PIN CONTACT - BRASS
  - COMPLIANT PIN - PHOSPHOR BRONZE

2. ITEMS PROVIDED TO THIS SPECIFICATION SHALL BE IDENTIFIED ON CONTAINER WITH THE FOLLOWING INFORMATION PART NUMBER AND DATE CODE OF MANUFACTURE.

1. PART NUMBER CHANGES AND/OR DESIGN CHANGES AFFECTING ITEM INTERCHANGEABILITY REQUIRE PRIOR TYCO APPROVAL AND AUTHORIZATION BY REVISION TO THIS DRAWING.

NOTES: UNLESS OTHERWISE SPECIFIED



THIS DRAWING IS A CONTROLLED DOCUMENT.		DWN R.GRZYBOWSKI 06JAN06		<div>tyco</div> <div>Electronics</div>		Tyco Electronics Corporation	
		CHK P.DAMATO 06JAN06				Harrisburg, PA 17105-3608	
DIMENSIONS: INCHES		TOLERANCES UNLESS OTHERWISE SPECIFIED:		APVD S.FLICKINGER 06JAN06		NAME	
		0 PLC ± -		ICCON PIN, PARALLEL, COMPLIANT TAIL NONLOCKING, 10 PIN FOOTPRINT WITH GOLD PINS			
		1 PLC ± -					
		2 PLC ± .02					
		3 PLC ± .010					
		4 PLC ± -					
		ANGLES ± .5					
MATERIAL		FINISH		PRODUCT SPEC		RESTRICTED TO	
				APPLICATION SPEC			
				WEIGHT		—	
				CUSTOMER DRAWING		SCALE 1:1	
				SIZE A3		CAGE CODE 00779	
				DRAWING NO C-6646258		SHEET 1 OF 1	
						REV A	

# Mouser Electronics

Authorized Distributor

Click to View Pricing, Inventory, Delivery & Lifecycle Information:

[TE Connectivity:](#)

[6646258-1](#)