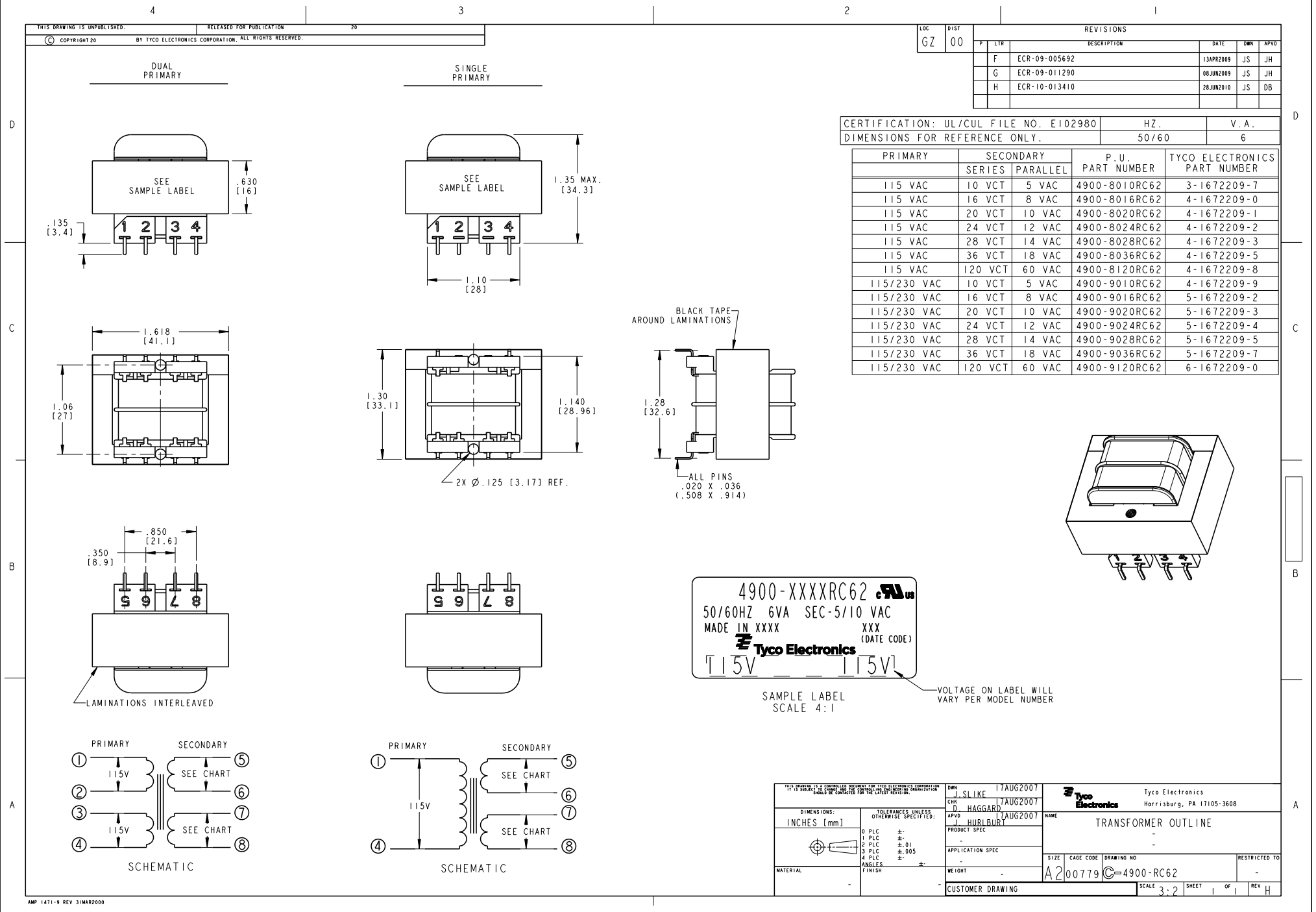


THIS DRAWING IS UNPUBLISHED. RELEASED FOR PUBLICATION
 © COPYRIGHT 20 BY TYCO ELECTRONICS CORPORATION. ALL RIGHTS RESERVED.

| LOC | DIST | REVISIONS | | | |
|-----|------|---------------|-----------|-----|------|
| P | LTR | DESCRIPTION | DATE | DNW | APVD |
| F | | ECR-09-005692 | 13APR2009 | JS | JH |
| G | | ECR-09-011290 | 08JUN2009 | JS | JH |
| H | | ECR-10-013410 | 28JUN2010 | JS | DB |

CERTIFICATION: UL/CUL FILE NO. E102980 HZ. 50/60 V. A. 6
 DIMENSIONS FOR REFERENCE ONLY.

| PRIMARY | SECONDARY SERIES | PARALLEL | P. U. PART NUMBER | TYCO ELECTRONICS PART NUMBER |
|-------------|------------------|----------|-------------------|------------------------------|
| 115 VAC | 10 VCT | 5 VAC | 4900-8010RC62 | 3-1672209-7 |
| 115 VAC | 16 VCT | 8 VAC | 4900-8016RC62 | 4-1672209-0 |
| 115 VAC | 20 VCT | 10 VAC | 4900-8020RC62 | 4-1672209-1 |
| 115 VAC | 24 VCT | 12 VAC | 4900-8024RC62 | 4-1672209-2 |
| 115 VAC | 28 VCT | 14 VAC | 4900-8028RC62 | 4-1672209-3 |
| 115 VAC | 36 VCT | 18 VAC | 4900-8036RC62 | 4-1672209-5 |
| 115 VAC | 120 VCT | 60 VAC | 4900-8120RC62 | 4-1672209-8 |
| 115/230 VAC | 10 VCT | 5 VAC | 4900-9010RC62 | 4-1672209-9 |
| 115/230 VAC | 16 VCT | 8 VAC | 4900-9016RC62 | 5-1672209-2 |
| 115/230 VAC | 20 VCT | 10 VAC | 4900-9020RC62 | 5-1672209-3 |
| 115/230 VAC | 24 VCT | 12 VAC | 4900-9024RC62 | 5-1672209-4 |
| 115/230 VAC | 28 VCT | 14 VAC | 4900-9028RC62 | 5-1672209-5 |
| 115/230 VAC | 36 VCT | 18 VAC | 4900-9036RC62 | 5-1672209-7 |
| 115/230 VAC | 120 VCT | 60 VAC | 4900-9120RC62 | 6-1672209-0 |



| | | | |
|--|--|--|---|
| <small>THIS DRAWING IS A CONTROLLED DOCUMENT OF TYCO ELECTRONICS CORPORATION. IT IS SUBJECT TO CHANGE AND THE USER SHALL BE CONTACTED FOR THE LATEST REVISION INFORMATION.</small> | | DNW J. SLIKE 17AUG2007 CHK D. HAGGARD 17AUG2007 APVD J. HURLBURY 17AUG2007 | Tyco Electronics Harrisburg, PA 17105-3608 |
| DIMENSIONS: INCHES [mm] | | PRODUCT SPEC: - APPLICATION SPEC: - WEIGHT: - CUSTOMER DRAWING: - | NAME: TRANSFORMER OUTLINE SIZE: A2 CAGE CODE: 00779 DRAWING NO: C=4900-RC62 RESTRICTED TO: - SCALE: 3:2 SHEET 1 OF 1 REV H |
| TOLERANCES UNLESS OTHERWISE SPECIFIED: 0 PLC ± 1 PLC ±.01 2 PLC ±.005 3 PLC ±.005 4 PLC ± ANGLES ± | | MATERIAL: - FINISH: - | |

Mouser Electronics

Authorized Distributor

Click to View Pricing, Inventory, Delivery & Lifecycle Information:

[TE Connectivity:](#)

[4900-9010RC62](#)