

THIS DRAWING IS UNPUBLISHED.

RELEASED FOR PUBLICATION

© COPYRIGHT - By -

ALL RIGHTS RESERVED.

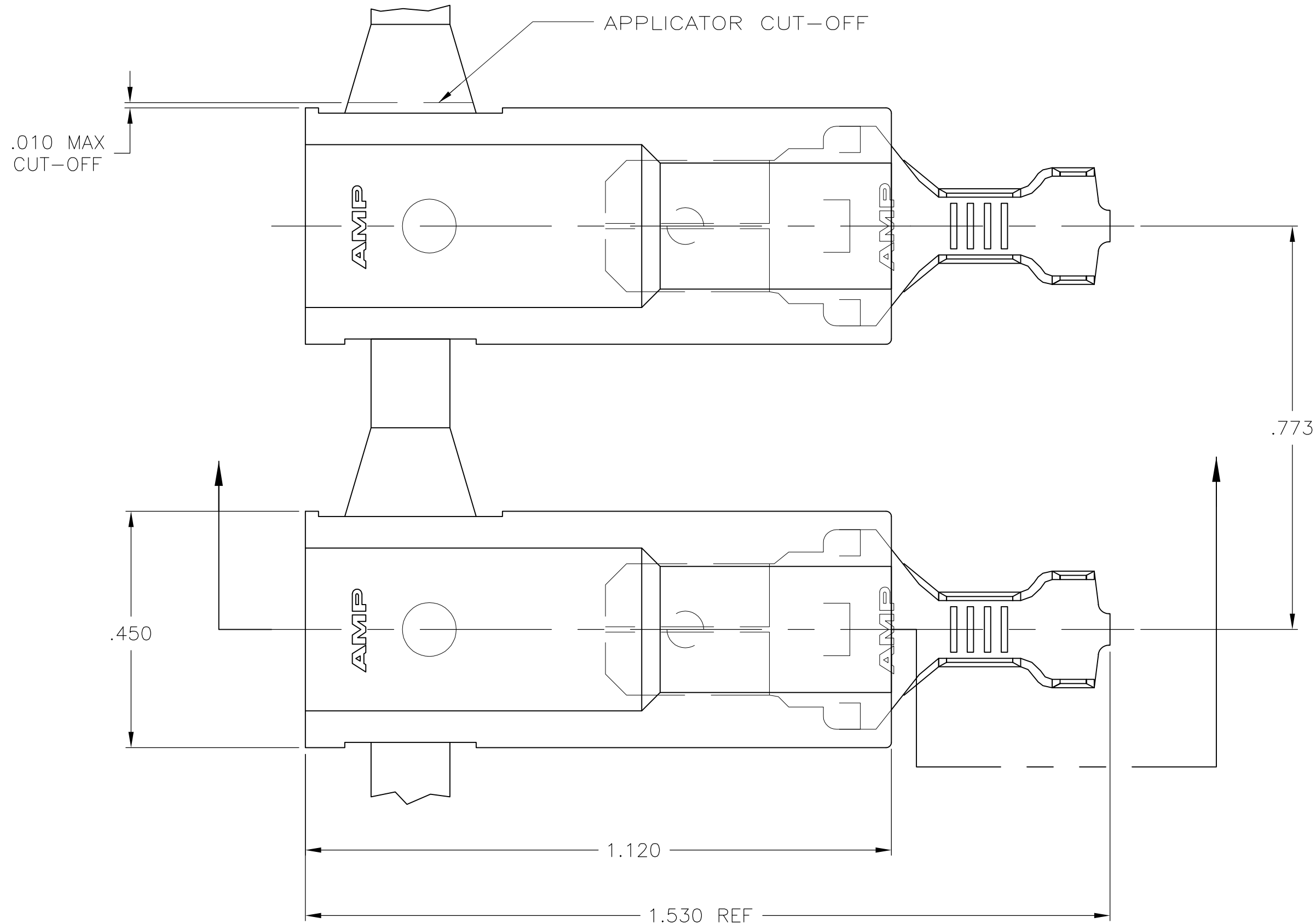
LOC	DIST	REVISIONS					
		P	LTR	DESCRIPTION	DATE	DWN	APVD
AF	50		B2	REL PER ECO 12-013167	18JUL12	JR	PD

D

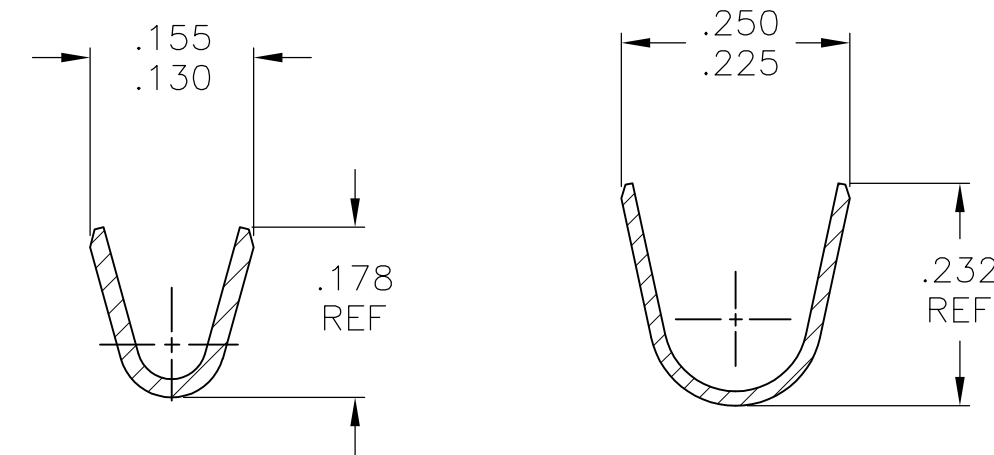
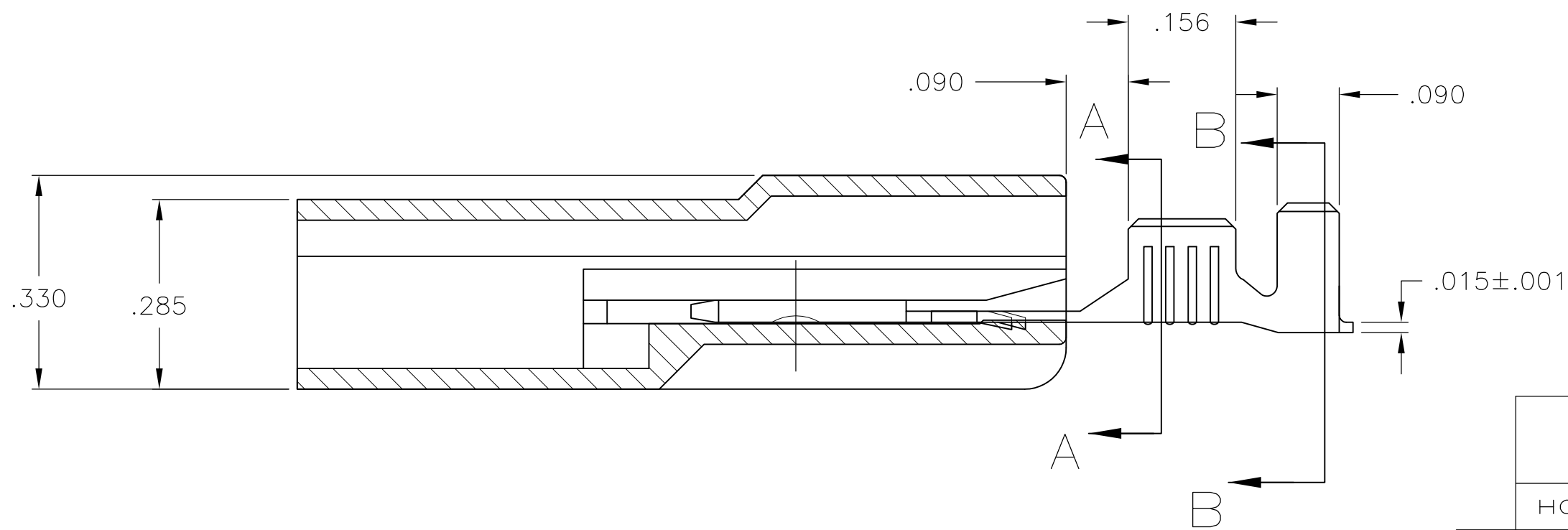
C

B

A





- 1 FASTON TAB BASE #1742150, ARE USED IN THIS PRODUCT.
- 2 WIRE SIZE IS #18-#14 AWG.
- 3 INSULATION RANGE IS .130-.180 DIA
- 4 MATES WITH A .250 X .032 RECEPTACLE



SECTION A-A

SECTION B-B

6/6 NYLON, NATURAL	082 BRASS , TIN PLATE	521747-2
	082 BRASS , PLAIN	521747-1
HOUSING: MATERIAL	TERMINAL: MATERIAL & FINISH	PART NO.

THIS DRAWING IS A CONTROLLED DOCUMENT.		DWN JR RUTH 07JUL04	 TE Connectivity						
		CHK FRISTY YI 07JUL04							
DIMENSIONS: INCHES <small>(SEE NOTE 1)</small>		TOLERANCES UNLESS OTHERWISE SPECIFIED:	APVD KRISTY YI 07JUL04	NAME ASSEMBLY, TAB, ULTRA-POD, .250 SERIES —					
	0 PLC ± —	PRODUCT SPEC	NAME						
	1 PLC ± —	108-1285							
	2 PLC ± .010	APPLICATION SPEC							
	3 PLC ± —	114-2124							
4 PLC ± —	ANGLES ± —	WEIGHT —	SIZE A2	CAGE CODE 00779	DRAWING NO C-521747	RESTRICTED TO —			
MATERIAL SEE TABLE		FINISH SEE TABLE	CUSTOMER DRAWING				SCALE 5:1	SHEET 1 OF 1	REV B2

Mouser Electronics

Authorized Distributor

Click to View Pricing, Inventory, Delivery & Lifecycle Information:

[TE Connectivity:](#)

[521747-1](#)