

SPECIFICATIONS:

ELECTRICAL:

INSULATOR RESISTANCE:	5 G OHMS Min.
DIELECTRIC WITHSTANDING:	1,000VAC r.m.s.
OPERATING TEMPERATURE:	-55° C ~ +125° C
POWER CONTACT RESISTANCE:	1.0 mOHMS Max.
SIGNAL CONTACT RESISTANCE:	2.7 mOHMS Max.
POWER PINS:	SEE PART NUMBER BELOW
SIGNAL PINS:	5 AMPS

MECHANICAL:

CONTACT INSERTION FORCE:	4.5 Kg Max.
CONTACT SEPARATOR FORCE:	0.3Kg Min.

MATERIALS:

CONTACTS:	COPPER ALLOY
INSULATOR:	PBT UL94V-0 RATED, BLK
	230°C PROCESS TEMP.
SHELL:	STEEL
SEAL:	F08 FLEXIBLE ADHESIVE

FINISH:

SHELL:	NICKEL
CONTACTS:	FULL GOLD FLASH

680S9W4103L YY1

2 = 20 AMP
 4 = 40 AMP
 0 = NO HARDWARE
 1 = 0.098" CN TERMINATION SIDE
 1 = GOLD FLASH
 *CONTACT NORCOMP FOR MORE OPTIONS

MEETS IP67 STANDARDS

(SEE PAGE 2 FOR SEALING DETAILS)

RoHS COMPLIANT



THESE DRAWINGS AND SPECIFICATIONS ARE THE PROPERTY OF NorComp AND SHALL NOT BE REPRODUCED, COPIED OR USED AS THE BASIS FOR THE MANUFACTURE OR SALE OF APPARATUS WITHOUT WRITTEN PERMISSION.

DRAWN:

M. SIGMON

DATE:

06/10/2013

UNITS = inch [mm]

DO NOT SCALE FROM DRAWING

NorComp

SCALE:

NTS

SHEET

OF

1

2

REV

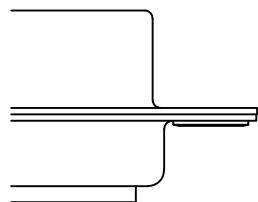
1

DWG NO.

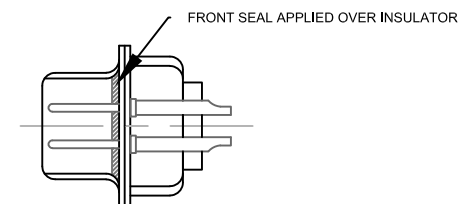
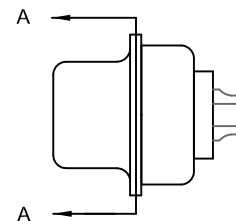
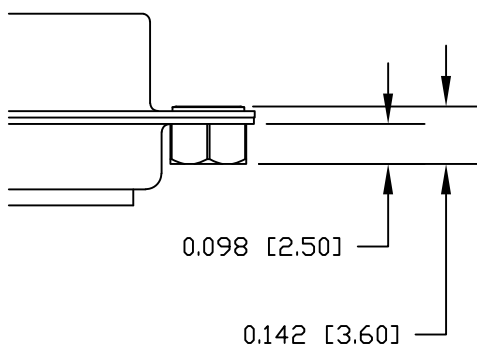
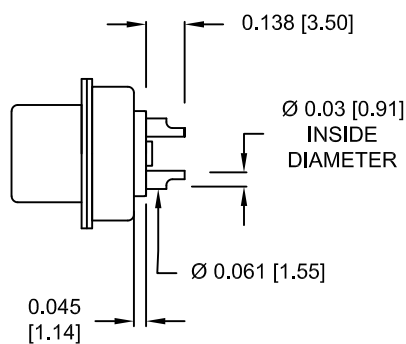
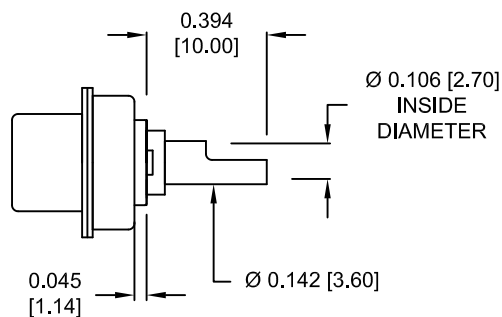
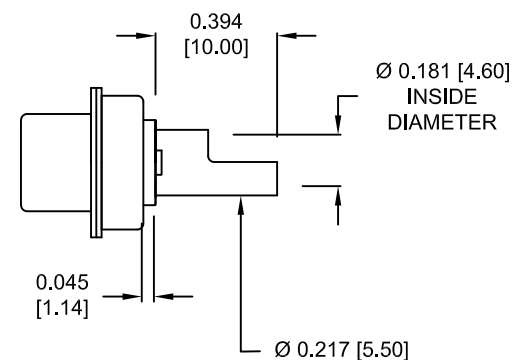
680S9W4103L YY1

HARDWARE OPTIONS

0 NO HARDWARE



1 0.098" TERMINATION SIDE

DETAIL A-A
SHOWN FOR REFERENCE ONLYNOTE:
SIGNAL AND POWER CONTACTS
COME PRE-LOADED INTO INSULATORSSIGNAL CONTACTS
ACCEPTS UP TO 20 AWG WIRE20 AMP POWER CONTACTS
ACCEPTS UP TO 12 AWG WIRE40 AMP POWER CONTACTS
ACCEPTS UP TO 8 AWG WIRE

RoHS COMPLIANT

THESE DRAWINGS AND SPECIFICATIONS ARE
THE PROPERTY OF NorComp AND SHALL NOT
BE REPRODUCED, COPIED OR USED AS THE
BASIS FOR THE MANUFACTURE OR SALE OF
APPARATUS WITHOUT WRITTEN PERMISSION.DRAWN:
M. SIGMON
DATE:
06/10/2013

UNITS = inch [mm]

NorComp

DO NOT SCALE FROM DRAWING

SCALE:
NTS

SHEET 2 OF 2

REV
1

DWG NO.

680S9W4103LYY1

Mouser Electronics

Authorized Distributor

Click to View Pricing, Inventory, Delivery & Lifecycle Information:

NorComp:

[680S9W4103L201](#) [680S9W4103L401](#)