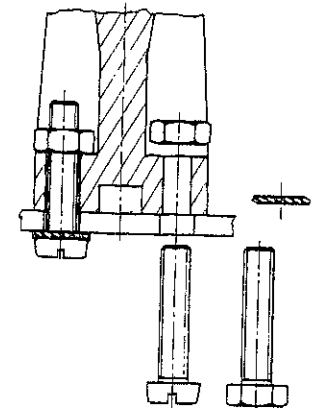
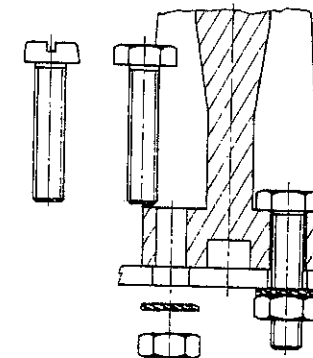
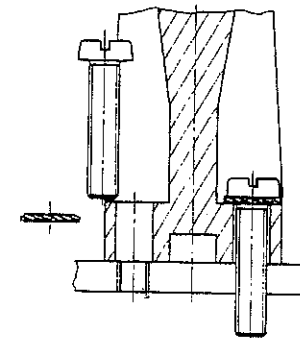
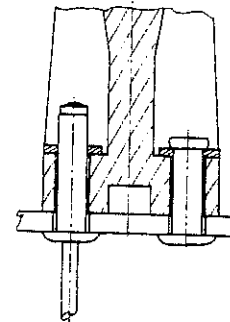
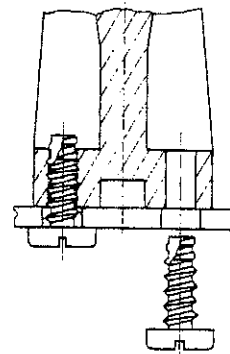
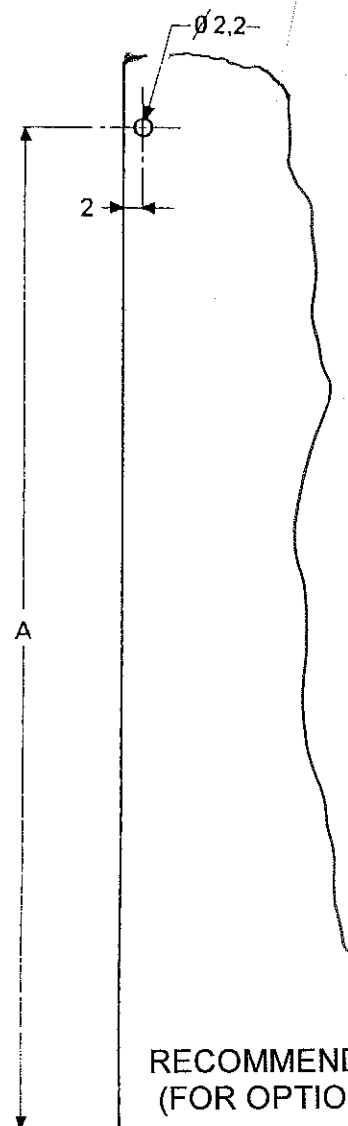
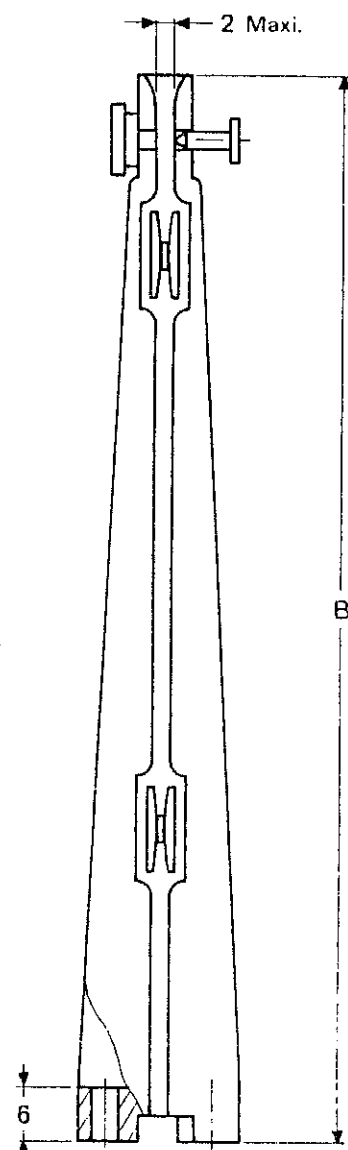
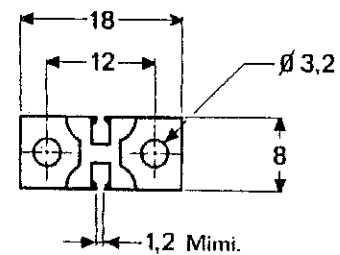


| LOC | DIST | REVISIONS | | | |
|-----|------|-----------|-----|-------------|------------------|
| | | P | LTR | DESCRIPTION | DATE |
| F | 00 | | | A RELEASE | FEB 07 Y.P. Y.P. |
| | | | | | |
| | | | | | |
| | | | | | |



MOUNTING OPTIONS (HARDWARE NOT SUPPLIED)

| | | | | |
|----------------|---------|---------|------------------------|---------------------------------|
| NO | 31,5 | 39 | GRS 6029 | 4-1437353-2 |
| YES | 31,5 | 39 | GRS 6029 VR | 4-1437353-3 |
| NO | 56,5 | 64 | GRS 6030 | 4-1437353-4 |
| YES | 56,5 | 64 | GRS 6030 VR | 4-1437353-5 |
| NO | 81,5 | 89 | GRS 6031 | 4-1437353-6 |
| YES | 81,5 | 89 | GRS 6031 VR | 4-1437353-7 |
| NO | 112,5 | 120 | GRS 6032 | 4-1437353-8 |
| YES | 112,5 | 120 | GRS 6032 VR | 4-1437353-9 |
| LOCKING DEVICE | DIM "A" | DIM "B" | OEC-T/B PART NUMBER | TYCO ELECTRONICS PART NUMBER |

NOTES:

1 MATERIALS:

- GLASS FILLED PBT UL 94V0
- NICKEL PLATED ZINC ALLOY (LOCKING DEVICE)

2 OPERATING TEMPERATURE: -55°C +125°C

| | | | | | |
|--|--|--|--|--|--|
| THIS DRAWING IS A CONTROLLED DOCUMENT FOR TYCO ELECTRONICS CORPORATION IT IS SUBJECT TO CHANGE AND THE CONTROLLING ENGINEERING ORGANIZATION SHOULD BE CONTACTED FOR THE LATEST REVISION. | | DWN JJ. DESPRETZ 12FEB2007 CHK G. ROBERT 12FEB2007 APVD Y. PETRONIN 12FEB2007 | | tyco Tyco Electronics France SAS Electronics 95300 Pontoise, France | |
| DIMENSIONS: mm | | TOLERANCES UNLESS OTHERWISE SPECIFIED: 0 PLC ± 1 PLC ± 0.3 2 PLC ± 0.15 3 PLC ± 4 PLC ± ANGLES ±5 | | NAME | |
| MATERIAL SEE NOTES | | FINISH | | PRODUCT SPEC | |
| | | | | APPLICATION SPEC | |
| | | | | WEIGHT | |
| | | | | CUSTOMER DRAWING | |
| | | | | SIZE CAGE CODE DRAWING NO RESTRICTED TO | |
| | | | | A300779C- 4-1437353-2 | |
| | | | | SCALE SHEET OF REV A | |

Mouser Electronics

Authorized Distributor

Click to View Pricing, Inventory, Delivery & Lifecycle Information:

[TE Connectivity:](#)

[4-1437353-5](#)