

4

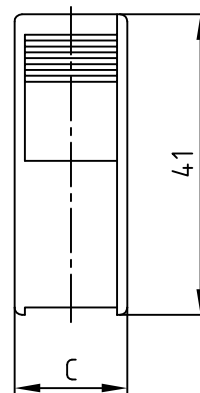
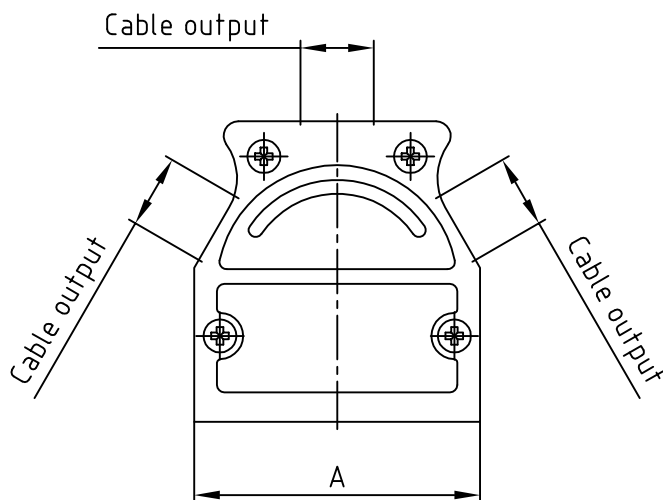
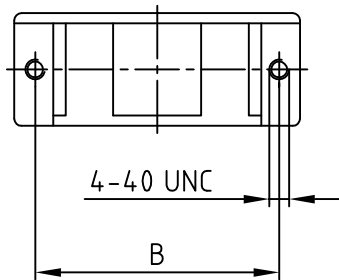
3

2

1

used for:

D-SUB

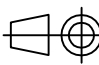



(b)

No. of pos.	A	B	C	Part No:
9	31.0	25.0	14.8	600X51109X
15	39.2	33.3	14.8	600X51115X
25	53.0	47.0	14.8	600X51125X
37	69.4	63.5	14.8	600X51137X
50	67.0	61.1	17.4	600X51150X

Directive 2002/95/EC RoHS compliant

THIS DRAWING MAY NOT BE COPIED OR  
REPRODUCED IN ANY WAY, AND MAY NOT  
BE PASSED ON TO A THIRD PARTY WITHOUT  
WRITTEN PERMISSION.  
OWNERSHIP AND COPYRIGHT OF CONEC GmbH  
DO NOT ALTER CAD DRAWING BY HAND

				tolerance		
				2002	date	name
				drawn	28.02.	Parei
				appd.	28.02.	E. Mickenbecker
				norm	DIN41652	
				d-old	KAT118QA	
1 x b	Ä4912	04.09.2013	K.H.			
a	Original					
rev.	description	date	name			

CONEC®

16K1A616

SEE TABLE

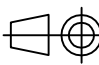

4

3

2

1

THIS DRAWING MAY NOT BE COPIED OR  
REPRODUCED IN ANY WAY, AND MAY NOT  
BE PASSED ON TO A THIRD PARTY WITHOUT  
WRITTEN PERMISSION.  
OWNERSHIP AND COPYRIGHT OF CONEC GmbH  
DO NOT ALTER CAD DRAWING BY HAND

				tolerance		
				2002	date	name
				drawn	28.02.	Parei
				appd.	28.02.	E. Mickenbecker
				norm	DIN41652	
				d-old	KAT118QA	
1 x b	Ä4912	04.09.2013	K.H.			
a	Original					
rev.	description	date	name			

CONEC®

16K1A616

SEE TABLE

# Mouser Electronics

Authorized Distributor

Click to View Pricing, Inventory, Delivery & Lifecycle Information:

[CONEC:](#)

[600X51109X](#)