

4

3

2

1

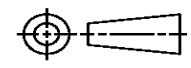
THIS DRAWING IS UNPUBLISHED. RELEASED FOR PUBLICATION
 © COPYRIGHT ALL RIGHTS RESERVED.

LOC	DIST	REVISIONS			
P	LTR	DESCRIPTION	DATE	DWN	APVD
	A1	ECR-14-018880	24DEC2014	GK	HMR

REPLACED BY OCEAN STYLE APPLICATOR PART NUMBER 2150490-1

FOR REPLACEMENT PARTS FOR APPLICATOR 1529093
 REFER TO ADDITIONAL PAGE(S). SPARE PARTS KIT (IF LISTED)
 WILL REMAIN AVAILABLE.

THE REPLACEMENT OCEAN STYLE APPLICATOR HAS THE
 SAME TERMINATOR/PRESS INTERFACE AS APPLICATOR
 1529093

THIS DRAWING IS A CONTROLLED DOCUMENT.		DWN	GOPALAKRISHNA HV		
DIMENSIONS:		CHK	RAGHAVENDRA		
		APVD	RAGHAVENDRA		
TOLERANCES UNLESS OTHERWISE SPECIFIED:		PRODUCT SPEC	NAME		
0 PLC	±	APPLICATION SPEC	FINE ADJ END FD HD-I APPL		
1 PLC	±		SIZE	CAGE CODE	DRAWING NO
2 PLC	±		A3		©- 1529093
3 PLC	±				RESTRICTED TO
4 PLC	±				
ANGLES	±	WEIGHT			
MATERIAL	FINISH	CUSTOMER DRAWING	SCALE	SHEET 1 OF 2	REV A1



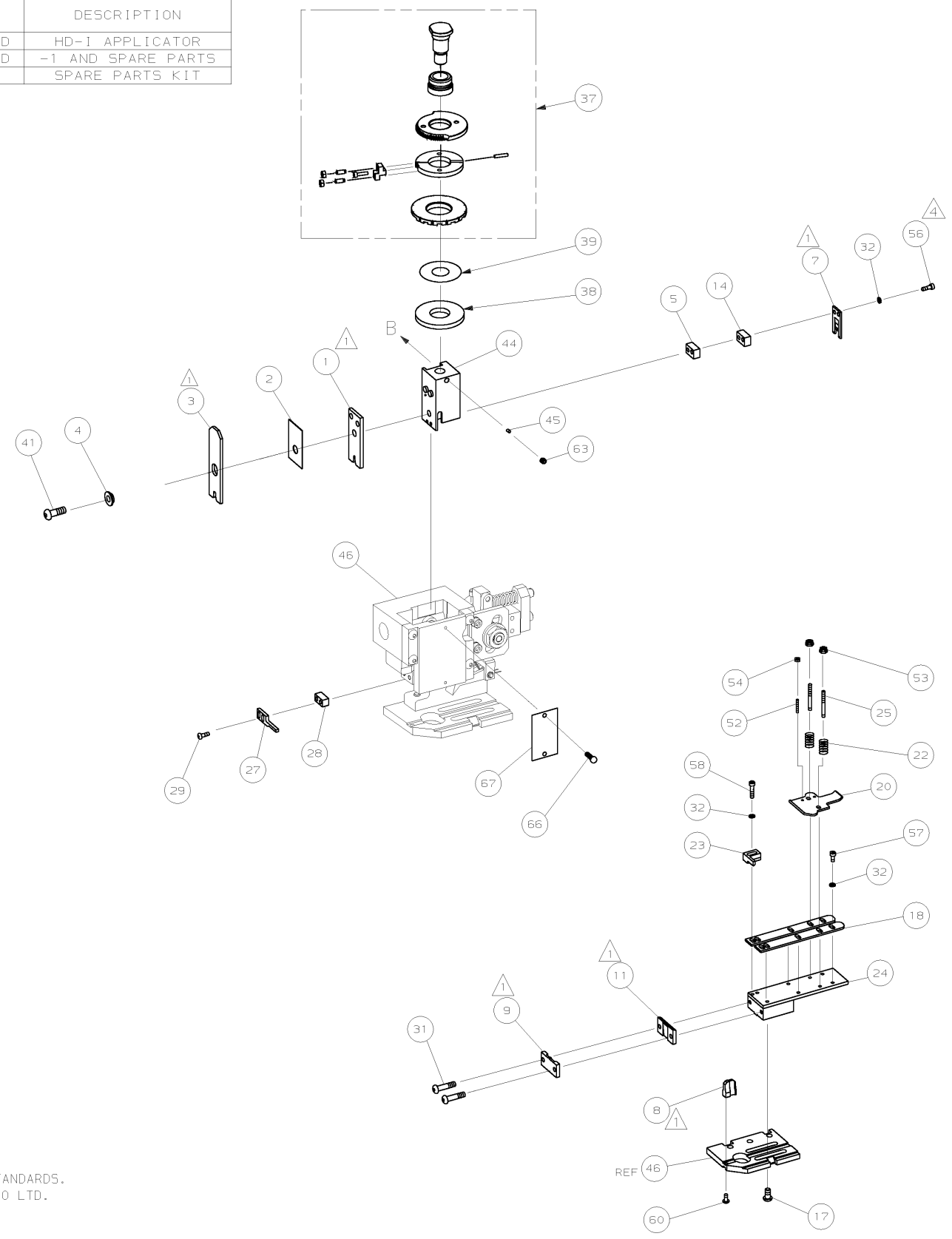
DRAWING MADE IN THIRD ANGLE PROJECTION

1529093 1529093

/home/eb003653/edmod

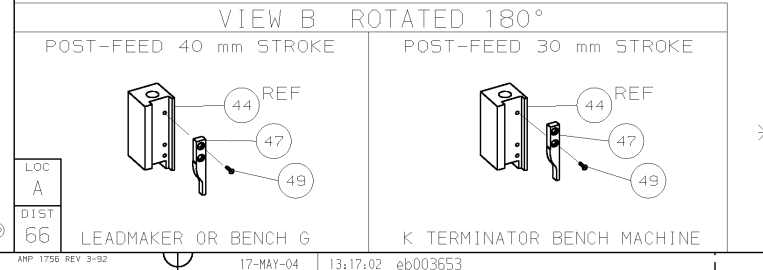
PART NUMBER	REV	FIRST USED	TERMINATOR	FEED TYPE	DESCRIPTION
1529093-1	A		- BENCH & LEADMAKER	MECH POST FEED	HD-1 APPLICATOR
7-1529093-1	A		- BENCH & LEADMAKER	MECH POST FEED	-1 AND SPARE PARTS
7-1529093-7	A		-	-	SPARE PARTS KIT

CRIMP DATA YAZAKI TERMINAL YAZAKI CRIMP SPECS			
TERMINAL NAME: YAZAKI 7116-2090 FAST-ON TYPE RECEPTACLE (.250)			
CRIMP	SIZE	TYPE	RANGE
WIRE	2.79 [.110 IN]	F	0.85mm ² - 2.00mm ²
INSUL	3.81 [.150 IN]	0V	1.60-3.00 [.063-.118 IN]
WIRE STRIP LENGTH		APPL INSTRUCTION	
5.00-5.50 [.197-.217 IN]		408-8323 & 408-8490	
TERMINAL APPL SPEC		FEED	
YPES 72-WT10-115-1		21.39 [.842 IN]	
TERMINALS APPLIED			
AMP PN	MFR PN		
1572413-1	7116-2090	-	-
-	-	-	-
-	-	-	-
-	-	-	-
-	-	-	-
-	-	-	-
-	-	-	-
-	-	-	-
-	-	-	-
WIRE SIZE	CRIMP HEIGHT	REF SETTING	
mm ² AWG			
2.00mm ²	1.45 ±0.05 [.057 ±.002 IN]	C 2	
1.25mm ²	1.35 ±0.05 [.053 ±.002 IN]	C 8	
0.5mm ² +0.5mm ²	1.30 ±0.05 [.051 ±.002 IN]	D 1	
0.85mm ²	1.20 ±0.05 [.047 ±.002 IN]	E 0	



QTY	REV	PART NO	DESCRIPTION	ITEM NO		
-	1	1	1529093	PRINT, APPLICATOR LOG SHEET	73	
-	1	1	1338705-4	DOCUMENTATION PACKAGE	72	
-	-	-	-	-	71	
-	-	-	-	-	70	
-	-	-	-	-	69	
-	-	-	-	-	68	
-	1	1	461264-5	PLATE, IDENTIFICATION	67	
-	2	2	21017-2	SCR,DRIVE (#2X.19) ID PLATE	66	
-	-	-	-	-	65	
-	-	-	-	-	64	
-	1	1	3-18031-0	SCR,SKT SET (M6X6) RAM	63	
-	-	-	-	-	62	
-	-	-	-	-	61	
-	1	1	18024-7	SCR,BHC (M4X10) ANVIL	60	
-	-	-	-	-	59	
-	2	2	1-18023-3	SCR,SHC (M4X16) HOLD DOWN	58	
-	5	5	18023-9	SCR,SHC (M4X6) STRIP GUIDE	57	
-	2	2	9-18023-6	SCR,SHC (M4X14) SLUG BLADE	56	
-	-	-	-	-	55	
-	2	2	18029-1	NUT,HEX (M3) DRAG	54	
-	2	2	986965-1	NUT,HEX SL (M4) DRAG STUD	53	
-	2	2	2-18032-2	SCR,SKT SET (M3X10) DRAG	52	
-	-	-	-	-	51	
-	-	-	-	-	50	
-	1	1	18024-3	SCR,BHC (M3X10) CAM	49	
-	-	-	-	-	48	
-	1	1	1338676-1	CAM, POST-FEED 30 & 40 mm ST	47	
-	1	1	1338662-1	APPLICATOR, BASIC (SUBASSY)	46	
-	1	1	690191-1	PLUG, NYLON	45	
-	1	1	1320998-1	RAM	44	
-	-	-	-	-	43	
-	-	-	-	-	42	
-	1	1	2-18024-6	SCREW,BHC (M8X25) CRIMPER	41	
-	-	-	-	-	40	
-	1	1	690125-1	SHIM SUBASSY	39	
-	1	1	469367-9	SPACER, FINE ADJUST	38	
-	1	1	879103-2	FINE ADJUST HEAD SUBASSY	37	
-	-	-	-	-	36	
-	-	-	-	-	35	
-	-	-	-	-	34	
-	-	-	-	-	33	
-	9	9	18025-2	WASHER,LOCK (M4) SHEAR BL	32	
-	2	2	1-18024-0	SCR,BHC (M4X20) SHEAR PL	31	
-	-	-	-	-	30	
-	2	2	18024-8	SCR,BHC (M4X12) STRIPPER	29	
-	1	1	3-690451-2	SPACER, STRIPPER	28	
-	1	1	240639-1	STRIPPER	27	
-	-	-	-	-	26	
-	2	2	1320906-1	DRAG, STUD	25	
-	1	1	1320995-1	PLATE, STRIP GUIDE	24	
-	1	1	240825-1	PLATE, STRIP HOLD DOWN	23	
-	2	2	4-22281-1	SPRING, DRAG	22	
-	-	-	-	-	21	
-	1	1	1338665-1	DRAG, STOCK	20	
-	-	-	-	-	19	
-	2	2	1338663-6	GUIDE, LOWER STRIP	18	
-	4	4	1-18024-8	SCR,BHC (M6X12) STRIP GD PL	17	
-	-	-	-	-	16	
-	-	-	-	-	15	
-	-	-	-	-	14	
-	1	1	2-240641-4	SPACER, SLUG BLADE	13	
-	-	-	-	-	12	
-	-	-	-	-	11	
-	1	1	240644-1	PLATE, REAR SHEAR	10	
-	1	1	690482-3	PLATE, FRONT SHEAR	9	
-	1	2	1	3-1333219-8	ANVIL	8
-	1	1	1	690474-3	BLADE, SLUG	7
-	-	-	-	-	6	
-	1	1	1-240641-6	SPACER, SLUG BLADE	5	
-	1	1	1	238009-1	SPACER, BLOCK CRIMPER	4
-	1	2	1	4-854830-7	CRIMPER, INSULATION	3
-	1	1	1	455888-9	SPACER, CRIMPER	2
-	1	2	1	1-456408-9	CRIMPER, WIRE	1

- 1. RECOMMENDED SPARE PARTS.
- 2. GREASE RAM, CAM, CAM FOLLOWER AND FEED ROD LIGHTLY.
- 3. LUBRICATE DAILY PER THE APPLICATOR INSTRUCTION SHEET SUPPLIED WITH THE APPLICATOR.
- 4. CUT TO LENGTH AT ASSEMBLY.
- 5. WIRE CRIMP DATA TO YAZAKI SPEC YPES 72-WT10-115-1. INSULATION CRIMP DATA CALCULATED BY TYCO.
- 6. WIRE CRIMP HEIGHTS CORRESPOND TO AVS WIRE TYPE.
- 7. 2.00mm² IS THE ONLY SIZE ACCEPTABLE TO TYCO CORPORATE STANDARDS. THEREFORE, SIZES 0.85 TO 1.25 ARE NOT RECOMMENDED BY TYCO LTD. ALL SIZES MEET YAZAKI APPLICATION SPECIFICATIONS.



*** WARNING:**
ON INSTALLATION, SET WIRE DISC TO LARGEST WIRE SIZE SETTING. USE OF SETTINGS BELOW MIN REQ'D CRIMP HEIGHT SETTING WILL CAUSE DAMAGE TO CRIMP TOOLING.

QTY REQD PER ASSY		PARTS LIST	
DR	24MAR04	APP	24MAR04
L.LOFTHOUSE	F.BACKHURST	REL	17MAY04
CHK	-	L.LOFTHOUSE	-
NAME		MACHINE REF	
FINE ADJ END FD HD-1 APPL		HD-1 APPL	
SCALE	D	DWG NO	1529093
SHEET	1 of 1	REV	A

THIS DRAWING IS A CONTROLLED DOCUMENT

LAYOUT L1529093
SET UP GAGE 458638-3

THIS DRAWING IS UNPUBLISHED.
BY AMP INCORPORATED. ALL RIGHTS RESERVED.
COPYRIGHT 20

AMP 1756 REV 3-92 8 17-MAY-04 13:17:02 eb003653 7

Mouser Electronics

Authorized Distributor

Click to View Pricing, Inventory, Delivery & Lifecycle Information:

[TE Connectivity:](#)

[1529093-1](#)