

# General Accessories

## General Accessories

**General Accessories**

**Installed**

### Drip Shield Kit

- Easily installed on Type 12, 4 and 4X wall-mount enclosures using stainless steel bolts and sealing washers (included).
- Designed not to interfere with door clamps.
- Protects door from dripping water and settling dust.
- Constructed in 14 gauge mild steel (painted) or 316 stainless steel
- Maintains enclosure rating



Painted Steel (Gray) Part Number	Painted Steel (Lt. Gray) Part Number	Stainless Steel Part Number	Fits Enclosure Width (inches)
DK12GY	DK12LG	DK12S16	12.00
DK16GY	DK16LG	DK16S16	16.00
DK20GY	DK20LG	DK20S16	20.00
DK24GY	DK24LG	DK24S16	24.00
DK30GY	DK30LG	DK30S16	30.00
DK36GY	DK36LG	DK36S16	36.00
DK42GY	DK42LG	-	42.00
DK48GY	DK48LG	-	48.00
DK60GY	DK60LG	-	60.00
DK72GY	-	-	72.00



### Ground Wire Kits

- Stranded #10 gauge copper wire with ring terminal .256 dia hole
- Includes mouting nuts both 1/4 20 and 10-32 ground studs
- Ground symbols (2 for each jumper)

Part No.	Description
GRDKIT01	Quantity 2
GRDKIT02	Quantity 6



### Door Support Guide

- Designed for use when heavy loads or uneven mounting surfaces changes door alignment
- Field installable kit
- Can be used on Hammond Eclipse and 1418 Series wall mount enclosures, all freestanding and floor mount enclosures - both painted and stainless steel
- Kit includes all necessary hardware and installation instructions
- Sealing washers included maintain enclosure integrity

Part No.	DSG1
----------	------



## General Accessories

### Light Kits



Magnet mount not included - must be ordered separately.



### Fluorescent Light Kit & Accessories

- Light kits are offered in 18", 24" and 48" widths.
- CSA and UL component recognized.
- Operating voltage 115 AC 60Hz
- Features a manually operated switch, 115V convenience outlet, durable plastic lens, and 6 foot power cord (without plug).
- Can mount into light mounting channel, bolt through enclosure or by using magnet strip (available separately - see chart below.)
- Magnet mount can be used with mild steel enclosures only.
- Remote door switch available separately for automatic activation.
- Finished in white.
- Use standard 18", 24" or 48" T8 fluorescent bulb (not included)

Part No.	Description
<b>FLK18T8<sup>1</sup></b>	18" Fluorescent Light Kit
<b>FLK24T8<sup>1</sup></b>	24" Fluorescent Light Kit
<b>FLK48T8<sup>1</sup></b>	48" Fluorescent Light Kit
<b>FLK18MM</b>	Magnet mount for 18" and 24" kit
<b>FLK48MM</b>	Magnet mount for 48" light kit

<sup>1</sup> T8 fluorescent bulb not included



### LED light kits

- Available in 9", 17.5", 26", 34.5" and 38.5" lengths
- Operating voltage 100/240V AC 50/60Hz Operating temperature -20 C to + 50 C
- Long lamp life 60,000 hours in warm white color temperature
- No remote power supplies as unit comes with its own integral LED drivers
- Hard wired via multiple knockouts in light weight extruded Aluminum frame finished white with manual operated switch
- Hinged glass diffuser allows easy access to replaceable LED module
- Remote door switch available separately for automatic activation

Part No.	Description	Number LED	
		Modules	Energy Use
<b>FLK5LED</b>	9" LED Light Kit	1.00	4.4 w
<b>FLK7LED</b>	17.5" LED Light Kit	2.00	7.2 w
<b>FLK10LED</b>	26" LED Light Kit	3.00	9.8 w
<b>FLK15LED</b>	34.5" LED Light Kit	4.00	15.0 w
<b>FLK17LED</b>	38.5" LED Light Kit	5.00	17.0 w



FDS1

FLKDS



### Remote Door Switch

- Permits convenient door activated on-off function of lights & air conditioners.
- Can be wired normally open or normally closed.
- 115/230 V AC

Part No.	For use with
<b>FLKDS</b>	1418, 1422, 1447, 2UD, UHD
<b>FDS1</b>	Eclipse, HME

# General Accessories

## General Accessories

General Accessories



### Touch-Up Spray Paint

- For use in matching standard Hammond colors.
- Provided in 12 oz. spray cans.

### Touch Up - Spray Can

Part No.	Color
1413BKLGS	Black - Low Gloss
1413BKS	Black
1413CGRALS	Beige RAL 7032
1413LRS	ANSI 61 Gray
1413NS	White
1413LGS	Light Gray RAL 7035
1413WH9003	White RAL 9003



### Casters

- Packaged in sets of four.
- 800 lb. load capacity per set.
- 4" swivel casters with brakes.
- Features zinc plated ball bearing pivot, composite wheels.

Part No. **1425D**



### 1425 Series Casters

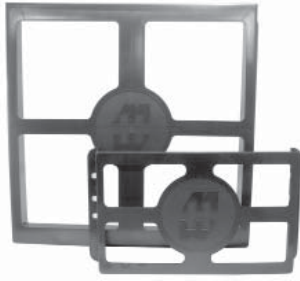
- Packaged in sets of four.
- Feature ball bearing, swivel and hard composition wheels.
- Available for 3 weight capacities.

Part No.	Mfg. Specified Capacity (Set of 4)	Wheel Diameter (inches)
1425B	360	3.0
1425BM	700	3.0
1425BH	1050	3.0



## General Accessories

### General Accessories



#### Literature Pocket Kit

- For use as additional or replacement literature pockets.
- Kit includes pocket, high strength two-sided adhesive tape and surface preparation swab.
- Plastic pocket is black.
- Packaged individually.

Part No.	Height	Width	Depth
<b>PKT66</b>	6	6	0.75
<b>PKT99</b>	6	9	0.75
<b>PKT1212</b>	12	12	2.50



#### Enclosure Stabilizers

- Prevents floor mounted enclosures from falling over while being worked on before they are bolted to the floor.
- Install by slipping under enclosure mounting foot and tightening two thumb screws.
- Finished in gray.

Part No.	Overall Dimensions
<b>1481ES (1 pair)</b>	8 x 30



#### Panel Lifting Handles

- Used for lifting, transporting and installing panel assemblies in enclosures that are positioned horizontally.

Part No.	1481H



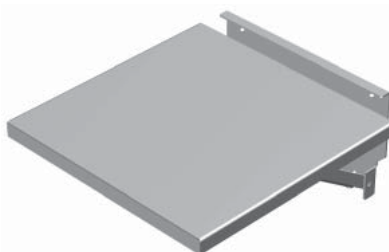
#### Neoprene Gasket Kit - NEMA 12 Enclosures

- Self-adhesive cellular neoprene gasket for NEMA 12 enclosures.
- Supplied in 10 foot rolls, 0.19" x 0.75".

#### Urethane Gasket Kit - NEMA 4, 4X Enclosures

- Self adhesive microcell urethane gasket for NEMA 4, 4X enclosures.
- Supplied in 10 foot rolls, 0.25" x 0.75".

Part No.	Material	For NEMA Type
<b>1481DJ10</b>	Neoprene	12
<b>1481DJN410</b>	Urethane	4, 4X



#### Fold Down Shelf

- Supports various equipment used temporarily to service/program switchgear inside enclosures.
- Mounts with bolts through doors or sides.
- Weight capacity 100 lbs.
- Finished in ANSI 61 Gray.

Part No	Work Surface (In.)	
	W	D
<b>FDS1212GY</b>	12	12
<b>FDS1818GY</b>	18	18

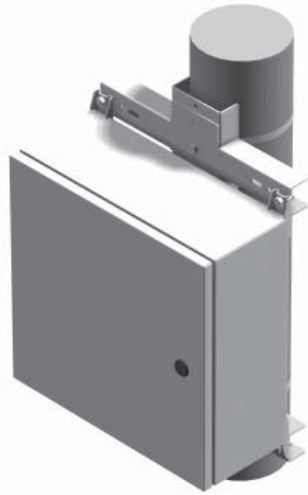


# General Accessories

## General Accessories

### Pole Mounting Kit

- Designed to mount outdoor rated enclosures - Hammond 1414N4, Eclipse, Eclipse Junior and 1418N4 Series
- Individual components allows user to choose mounting configuration and/or components to purchase
- Vertical channel can be lagged directly to pole or attached using optional stainless steel straps
- Vertical channel prevents enclosure from twisting
- Can be used on pole diameters from 4" and up
- Horizontal rails sold in pairs and comes with all hardware needed to secure the enclosure to the rails
- Stainless straps sold in quantities of 4
- PMSTRAP40 straps are rated for 450 lbs each and can be used for pole diameters up to 10"
- PMSTRAP55 straps are rated for 250 lbs each and can be used for pole diameters up to 15"



General Accessories



Vertical Steel Channel



Horizontal Steel Channel



Straps

Part No.	Description	Use with Hammond Series			
		1414N4	Eclipse Junior (EJ)	1418N4	Eclipse (EN4SD)
<b>PMV1216GY</b>	Vertical Steel Channel - Qty 1	12"-16" encl height	12"-16" encl height	12"-16" encl height	12"-16" encl height
<b>PMV2024GY</b>	Vertical Steel Channel - Qty 1	N/A	N/A	20"-24" encl height	20"-24" encl height
<b>PMV3036GY</b>	Vertical Steel Channel - Qty 1	N/A	N/A	30"-36" encl height	30"-36" encl height
<b>PMV4248GY</b>	Vertical Steel Channel - Qty 1	N/A	N/A	42"-48" encl height	42"-48" encl height
<b>PMH15GY</b>	Horizontal Steel Channel - Qty 2	12"-16" encl width	12"-16" encl width	12"-20" encl width	12"-20" encl width
<b>PMH25GY</b>	Horizontal Steel Channel - Qty 2	N/A	N/A	24"-30" encl width	24" encl width
<b>PMH35GY</b>	Horizontal Steel Channel - Qty 2	N/A	N/A	36" encl width	30"-36" encl width
<b>PMSTRAP40</b>	0.50" x 39" length 316 stainless strap - Qty 4				
<b>PMSTRAP55</b>	0.31" x 55" length 316 stainless strap - Qty 4				

## General Accessories

### General Accessories



### PJ Pole Mounting Kit

- Eight sizes cover PJU & PJ up to 30x24
- Adjustable steel band allows mounting on pole diameters up to 15"
- Adaptable pole mounting on round, square and rectangular shapes
- Minimal assembly with fewer parts for installation
- Corrosion protection for long outdoor life

Pole Mount Kit Part No.	Use with PJ Series (including all variations)	Use with PJU Series (including all variations)
<b>PJPOLEMNT8</b>	PJ864,PJ1084,PJ1086	PJU1084
<b>PJPOLEMNT10</b>	PJ1084,PJ1086, PJ12106	PJU12106
<b>PJPOLEMNT12</b>	PJ12106, PJ14126	PJ14126
<b>PJPOLEMNT14</b>	PJ14126, PJ16148	PJU16148
<b>PJPOLEMNT16</b>	PJ16148, PJ18168, PJ20168	PJU181610, PJU201610
<b>PJPOLEMNT20</b>	PJ242010	Not available
<b>PJPOLEMNT24</b>	PJ241010, PJ242410, PJ302410	Not available

# Mouser Electronics

Authorized Distributor

Click to View Pricing, Inventory, Delivery & Lifecycle Information:

## Hammond:

[1481S42K](#) [1481S48K](#) [1481S24K](#) [1481S20K](#) [1481S36K](#) [1481S30K](#) [FDS1818](#) [1481S12K](#) [1481S16K](#) [1481S72K](#)  
[1481DJN410](#) [1481S60K](#) [FDS1212](#)