

4

3

2

1

REVISIONS		
LTR	DESCRIPTION	DATE
F	REVISED PER ECO-11-021852	10/30/2011

## NOTES

- ALL DIMENSIONS ARE IN  $\frac{\text{INCHES}}{[\text{MILLIMETERS}]}$
- DIMENSIONS APPEARING IN TABLE ARE AS FOLLOWS:
  - AS SUPPLIED
  - AFTER UNRESTRICTED RECOVERY

3. COATING (ADHESIVE): IS OPTIONAL AS SUPPLIED DIMENSIONS APPEARING IN TABLE ARE FOR UNCOATED PARTS. WHEN COATING IS ADDED, ENTRY DIAMETER WILL BE REDUCED BY .06 [1.5] MAX.

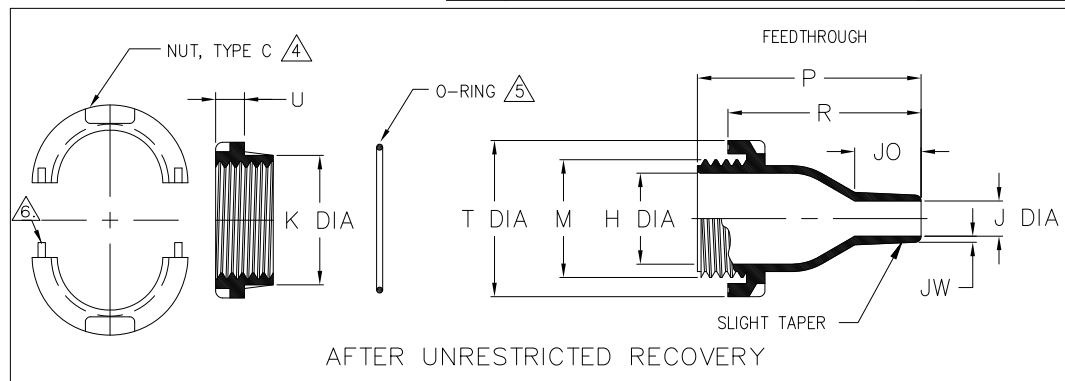
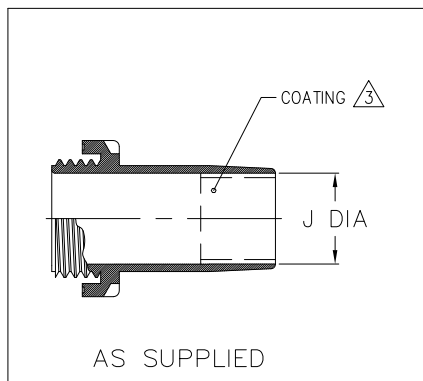
4. 207W223, 207W234 & 207W245 HAVE STAINLESS STEEL DOWEL PINS SECURED TYPE "C" NUT IS SUPPLIED WITH PART.

5. "O" RING IS SUPPLIED WITH PART.

6. IN PLACE WITH ADHESIVE.

## 7. ORDERING INFORMATION

BASE PART NUMBER 207W213 -3 -A16 /42  
 MATERIAL DASH NUMBER \_\_\_\_\_  
 -3 POLYOLEFIN, SEMI RIGID (RT-301)  
 MODIFICATION NUMBER \_\_\_\_\_  
 ADHESIVE SLASH NUMBER \_\_\_\_\_  
 SEE COMPATIBILITY CHART BELOW



## TABLE OF DIMENSIONS

PART DESCRIPTION	H	J		JO	K	M	P	R	T	U	JW	HOLE DIA
	REF b	MIN a	MAX b	MAX b	REF b	THREAD b	±10% b	±10% b	REF b	±10% b	±20% b	± .02 DIA
207W213-X-A16	.47 [11,9]	.39 [9,9]	.16 [4,1]	.60 [15,2]	.91 [23,1]	.79 [20,0]	2.44 [62,0]	1.93 [49,0]	1.26 [32,0]	.28 [7,1]	.04 [1,0]	.94 [23,9]
207W223-X-A16	.79 [20,0]	.71 [18,0]	.28 [7,0]	.77 [19,5]	1.30 [33,2]	1.18 [30,0]	2.84 [72,0]	2.32 [59,0]	1.65 [42,0]	.39 [9,9]	.07 [1,8]	1.34 [34]
207W234-X-A16	1.22 [31,0]	1.10 [28,0]	.47 [12,0]	1.06 [27,0]	1.80 [45,7]	1.65 [42,0]	3.43 [87,0]	2.91 [74,0]	2.28 [58,0]	.39 [9,9]	.08 [2,0]	1.85 [47,0]
207W245-X-A16	1.77 [44,9]	1.69 [42,9]	.71 [18,0]	1.26 [32,0]	2.34 [59,4]	2.20 [55,8]	4.42 [112,2]	3.85 [97,7]	2.80 [71,1]	.39 [9,9]	.12 [3,0]	2.07 [52,4]

If this document is printed it becomes uncontrolled. Check for the latest revision

## COMPATIBILITY CHART

MATERIAL DASH NO.	ADHESIVE (COATING) SLASH NUMBER	ADHESIVE (COATING) S NUMBER
-3	/42;	S-1017;

UNLESS OTHERWISE SPECIFIED  
 DIMENSIONS ARE INCHES. METRIC  
 DIMENSIONS ARE IN BRACKETS.

DECIMAL TOLERANCES

.XXX ± 0.005 [0.13 mm]  
 .XX ± 0.01 [0.25 mm]  
 .X ± 0.1 [0.50 mm]

ANGLE TOLERANCE  
 .X ± 1 DEG.

THIRD ANGLE PROJECTION

REVISED

UNGUYEN

APPROVED

DHURRELL

THIRD ANGLE PROJECTION

THIRD ANGLE PROJECTION



TE Connectivity

TITLE

FEEDTHROUGH, SEAL

SIZE  
B

CODE IDENT. NO.  
06090

DWG. NO.

207W2XX-X-A16

© 1997-2011 Tyco Electronics Corporation. All rights reserved.

DO NOT SCALE THIS DRAWING

SHEET 1 OF 1

# Mouser Electronics

Authorized Distributor

Click to View Pricing, Inventory, Delivery & Lifecycle Information:

[TE Connectivity:](#)

[207W213-3-A16-0](#)