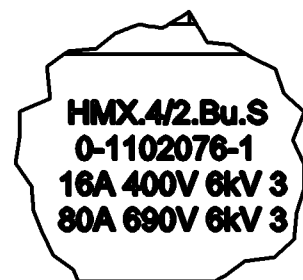
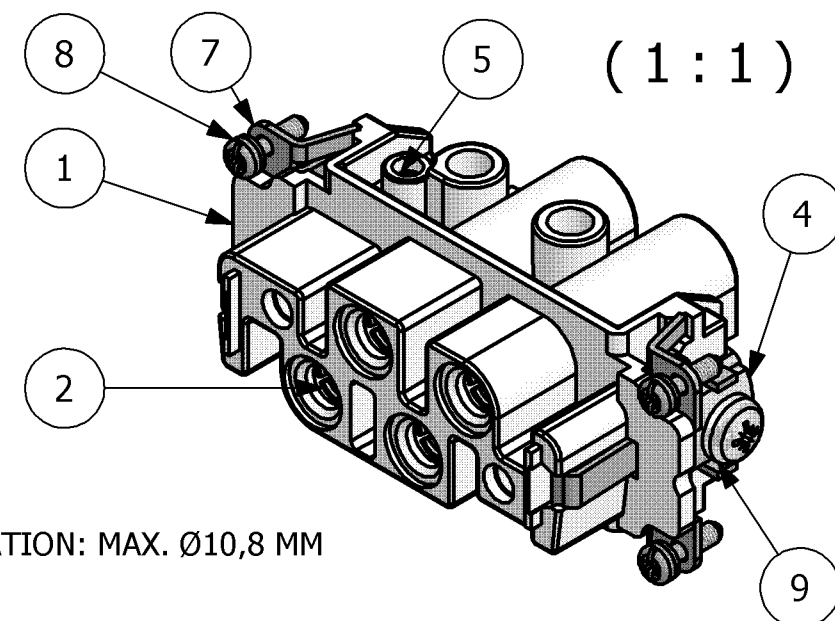



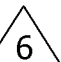
A (2 : 1)

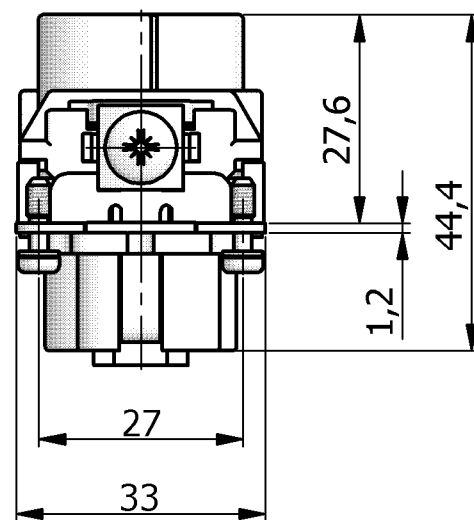
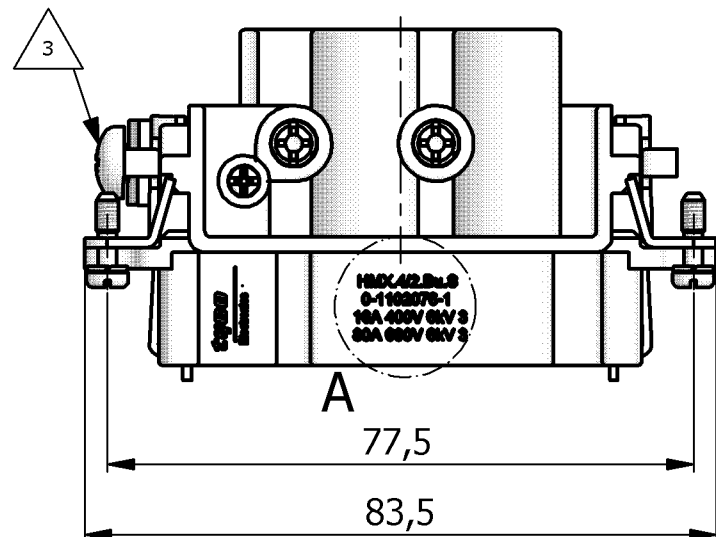


0-1 AS SHOWN
ORDERING TEXT: HMX.4/2.BU.S

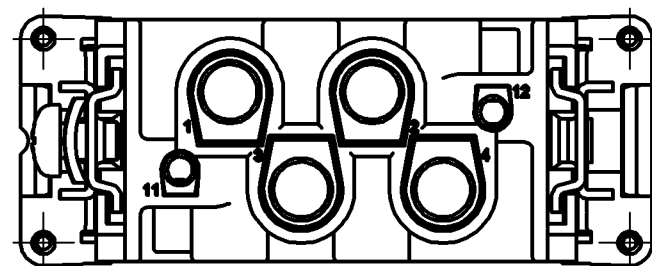


NOTES

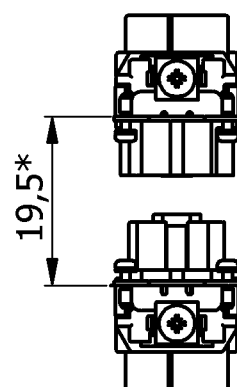
- 1 POWER CONTACT: 1 TO 4
OUTER DIMENSIONS OF INSULATION: MAX. Ø10,8 MM
- 2 SIGNAL CONTACT: 11 AND 12
OUTER DIMENSIONS OF INSULATION: MAX. Ø4,8 MM
-  3 GROUNDING CONTACT
- 4 SUITABLE HOOD SIZE 6: SERIES HB; HD; EMV AND HIP
- 5 STANDARDS:
DIN EN 61984; DIN EN 60664-1
-  6 UL; CSA AUTHORISATION
- 7 PACKAGING:
5 PIECES IN A CARTON



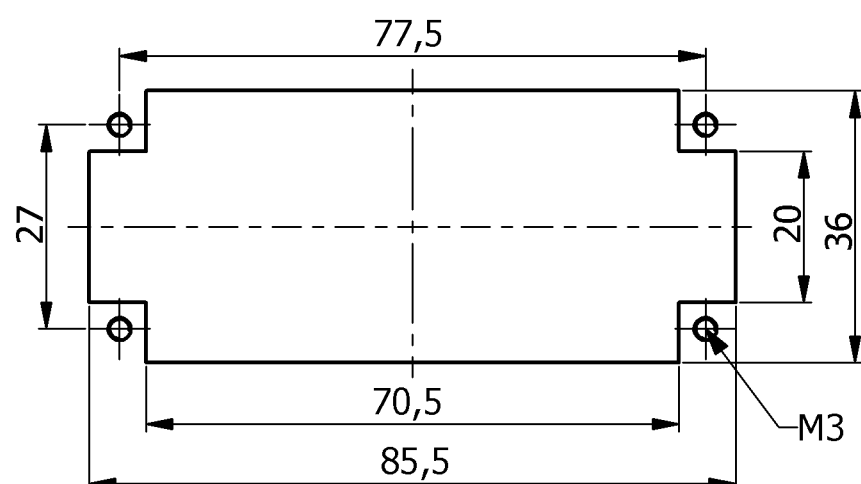
CONTACT ARRANGEMENT
VIEW FROM TERMINATION SIDE



* DISTANCE FOR GUARANTEED CONTACT MAX. 21 mm


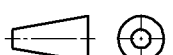



PANET CUT-OUT CONTACT INSERT WHEN USED WITHOUT HOUSING



1	SCREW	STEEL	NICKEL PLATED	BLUE	DIN EN ISO 1207-M5X8	9
4	FIXING SCREW	STEEL	NICKEL PLATED	BLUE	M3X10,5	8
2	SOCKET GROUNDING CONTACT	BRASS	NICKEL PLATED	BLUE	-	7
4	THREAD PIN	STEEL	NICKEL PLATED	BLUE		6
2	CONTACT SCREW	STEEL	NICKEL PLATED	BLUE	M3X5,7	5
1	CLAMP TAB	STEEL	NICKEL PLATED	BLUE	---	4
2	SOCKET CONTACT	BRASS	SILVER PLATED	BLUE	.	3
4	SOCKET CONTACT	BRASS	SILVER PLATED	BLUE	-	2
1	FEMALE INSERT	PBT-GF30	-	LIGHT GREY	-	1
QTY.	DESCRIPTION	MATERIAL	SURFACE	COLOR	NOTE	ITEM

PARTS LIST

THIS DRAWING IS A CONTROLLED DOCUMENT FOR AMP INCORPORATED. IT IS SUBJECT TO CHANGE AND THE CONTROLLING ENGINEERING ORGANIZATION SHOULD BE CONTACTED FOR THE LATEST REVISION. DIESES ZEICHNUNGSDOKUMENT WIRD DURCH AMP INCORPORATED KONTROLLIERT. ÄNDERUNGEN, DIE DEM TECHNISCHEN FORTSCHRITT DIENEN, SIND VORBEHALTEN. DEN JEWEILS LETZTGÜLTIGEN ÄNDERUNGSSTAND ERFÄHREN SIE AUF ANFRAGE.		DWN 12.07.2005 SCHNEIDER				Tyco / Electronics AMP GmbH D - 53819 Neunkirchen	
DIMENSIONS: DIMENSIONEN: mm		TOLERANCES UNLESS OTHERWISE SPECIFIED: ALLGEMEINTOLERANZEN n. ISO 8015 - n. ISO 2768 - mH-E n. DIN 16901- 140		CHK 12.07.2005 SCHNURPFEIL		Electronics	
		0 PLC # 1 PLC # 2 PLC # 3 PLC # ANGLES / WINKEL #		APVD - NAME		FEMALE INSERT HMX.4/2.BU.S	
MATERIAL		FINISH / OBERFLÄCHE / FARBE		PRODUCT SPEC. PRODUKTSPEZ. 108-74058		APPLICATION SPEC. VERARBEITUNGSSPEZ. 114-74058	
		WEIGHT GEWICHT 0,126 KG		SIZE A3	CAGE CODE 00779	DRAWING NO ZEICHNUNGS-NR.  1102076	RESTRICTED TO NUR FÜR
CUSTOMER DRAWING / KUNDENZEICHNUNG				SCALE MASSSTAB 1:1	SHEET BLATT 1	OF VON 1	REV. D1

Mouser Electronics

Authorized Distributor

Click to View Pricing, Inventory, Delivery & Lifecycle Information:

[TE Connectivity:](#)

[1102076-1](#)