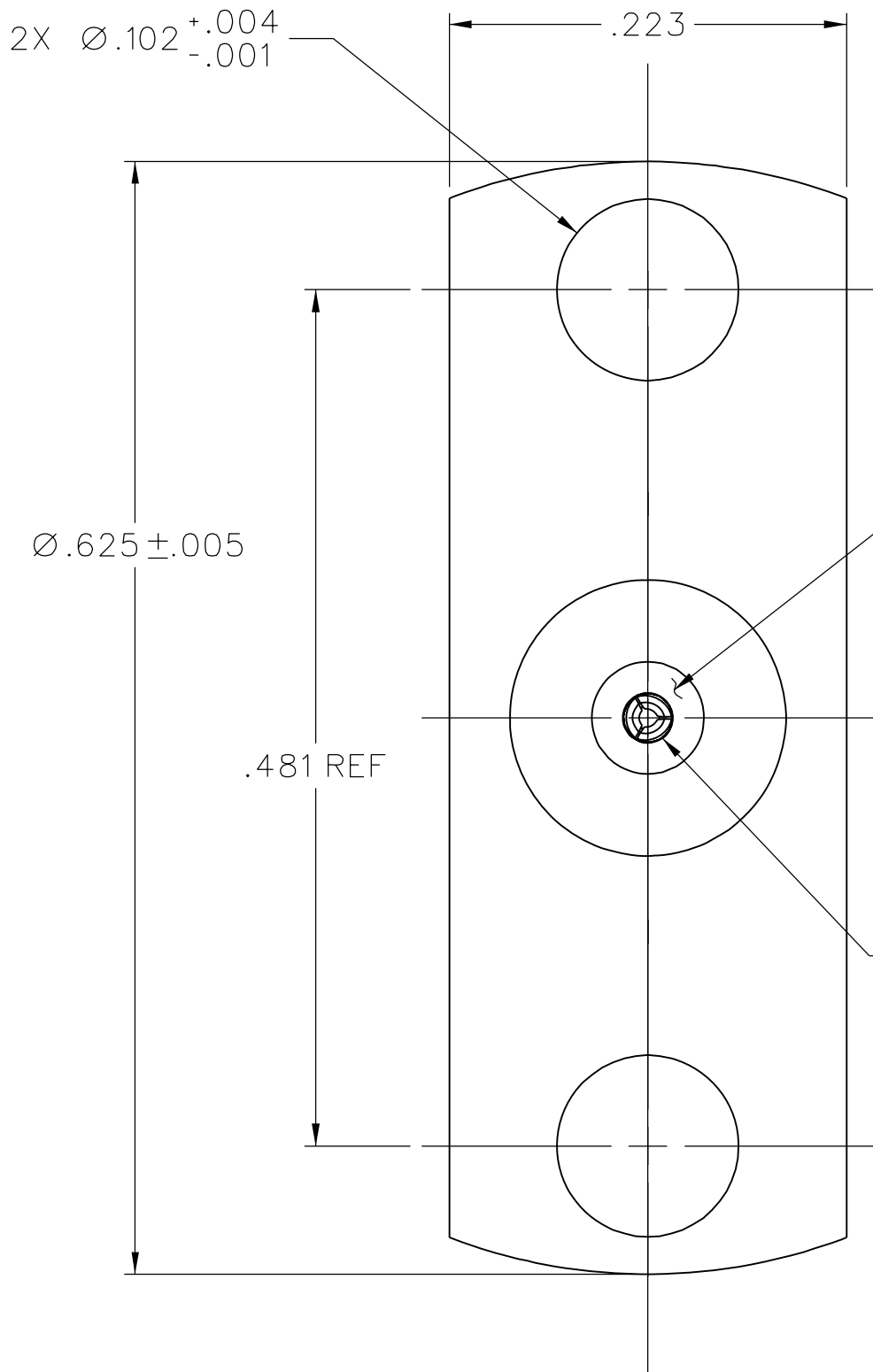
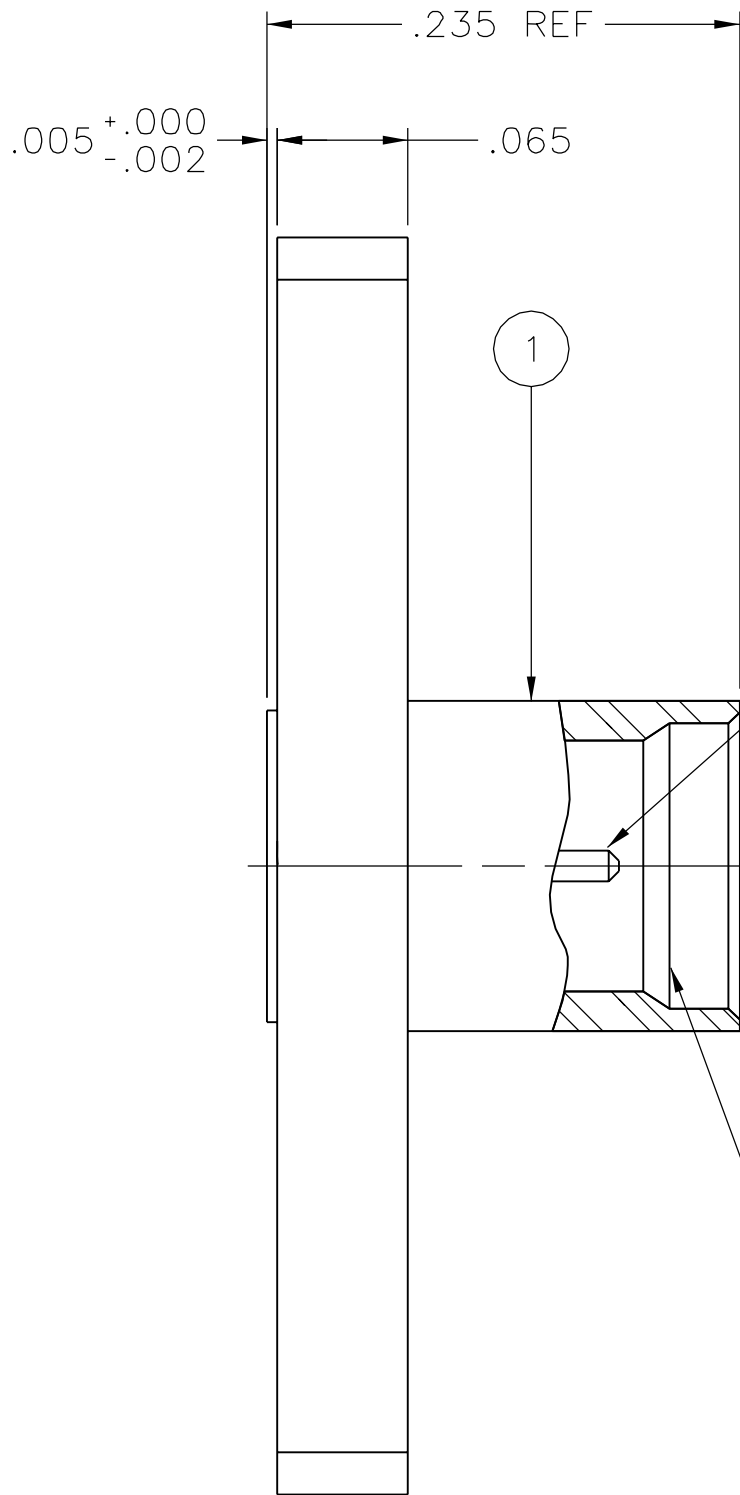


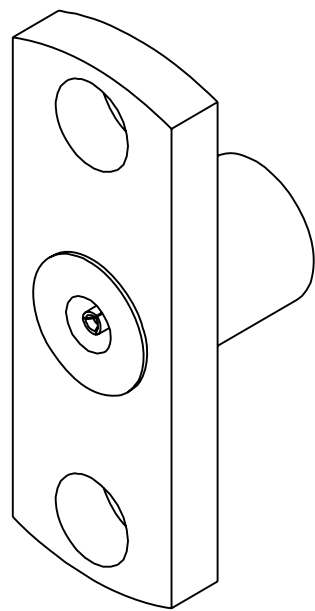
	ITEM ①	ITEM ②	ITEM ③
PART NUMBER	BODY	CONTACT	INSULATOR
127-2701-612	STAINLESS STEEL PASSIVATE	BERYLLIUM COPPER GOLD PL .00005 MIN OVER NICKEL PL .00005 MIN OVER COPPER PL .00005 MIN	TEFLON



SOCKET SHALL ACCEPT
.012±.001 DIA PIN
.075 MAX DEPTH



SMP SMOOTH BORE INTERFACE
PER MIL-STD-348A



5:1

NOTES:

1. SPECIFICATIONS:

IMPEDENCE: 50 OHMS NOMINAL
FREQUENCY RANGE: 0-18 GHz
VSWR: DEPENDANT UPON APPLICATION, TYPICALLY < 1.15
WORKING VOLTAGE: 335 VRMS MAX AT SEA LEVEL
DIELECTRIC WITHSTANDING VOLTAGE: 500 VRMS MIN AT SEA LEVEL
INSULATION RESISTANCE: 5000 MEGOHM MIN
CONTACT RESISTANCE:
 CENTER CONTACT - INITIAL 6.0 MILLIOHM MAX, AFTER ENVIRONMENTAL NOT APPLICABLE
 OUTER CONDUCTOR - INITIAL 2.0 MILLIOHM MAX, AFTER ENVIRONMENTAL NOT APPLICABLE
INSERTION LOSS: 0.10√F (GHz) dB MAX, TESTED AT 10 GHz
CORONA LEVEL: 190 VOLTS MIN AT 70,000 FEET
RF LEAKAGE: -80 dB TYPICAL, TESTED AT 2.5 GHz
RF HIGH POTENTIAL WITHSTANDING VOLTAGE: 325 VRMS MIN AT 4 AND 7 MHz

MECHANICAL:

INTERFACE DESIGN: IN ACCORDANCE WITH MIL-STD-348A, SERIES SMP
ENGAGEMENT FORCE: 2.0 LBS MAX
DISENGAGEMENT FORCE: 0.5 LBS MIN
CONTACT RETENTION: 1.5 LBS MIN AXIAL FORCE
DURABILITY: 1000 CYCLES MIN (SMP INTERFACE ONLY)

ENVIRONMENTAL:


(MEETS OR EXCEEDS THE APPLICABLE PARAGRAPH OF DSCC DWG NO. 94007)
OPERATING TEMPERATURE: -65°C TO 165°C
THERMAL SHOCK: MIL-STD-202, METHOD 107, CONDITION B, EXCEPT 165°C HIGH TEMP
MECHANICAL SHOCK: MIL-STD-202, METHOD 213, CONDITION I
CORROSION: MIL-STD-202, METHOD 101, CONDITION B
VIBRATION: MIL-STD-202, METHOD 204, CONDITION D
MOISTURE RESISTANCE: MIL-STD-202, METHOD 106, EXCEPT STEP 7B OMITTED

DRAWING NO.						
C - 127-2701-611/620						
0	REVISIONS					
ENGINEERING RELEASE						
1	6-20-07	PAT	JRK	MPDW	JCN	6-21-07 ECN 51096

THIS DRAWING TO BE INTERPRETED
PER ASME Y 14.5M - 1994

"μSTATION"

COMPANY CONFIDENTIAL

TOLERANCE UNLESS OTHERWISE SPECIFIED		DRAWN BY PAT	DATE 4-4-07	 Cinch CONNECTIVITY SOLUTIONS <small>a bel group</small> <div>Cinch Connectivity Solutions P.O. Box 1732 Waseca, MN 56093 1-800-247-8256</div>	TITLE SMP SMOOTH BORE FIELD REPLACEABLE
DECIMALS .XX	mm	CHECKED BY JRK	DATE 6-20-07		
.XXX ±.003		APPROVED BY PDW	DATE 6-21-07		
MATL		RELEASE DATE	6-21-07		
FINISH		U/M	INCH	SCALE	10:1
		SHEET 2 OF 2	DRAWING NO. C - 127-2701-611/620		

Mouser Electronics

Authorized Distributor

Click to View Pricing, Inventory, Delivery & Lifecycle Information:

[Cinch Connectivity Solutions:](#)

[127-2701-612](#)