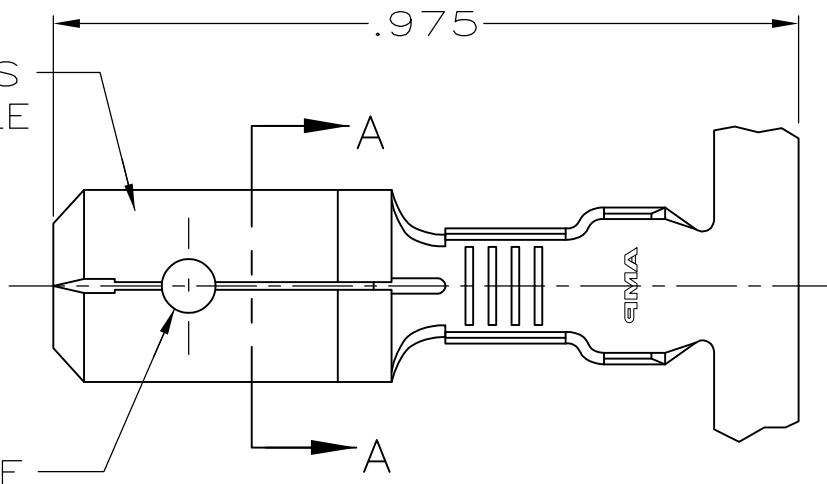


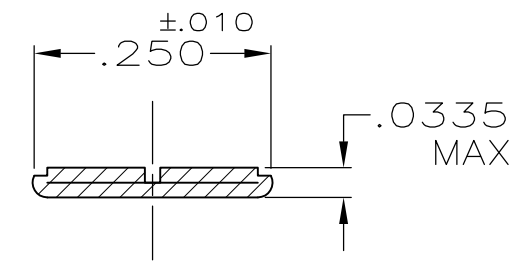
THIS DRAWING IS UNPUBLISHED. RELEASED FOR PUBLICATION
 © COPYRIGHT - By - ALL RIGHTS RESERVED.

LOC	DIST	REVISIONS			
P	LTR	DESCRIPTION	DATE	DWN	APVD
AF	50	J	REVISED PER ECR-13-011489	06DEC2013	KH PD

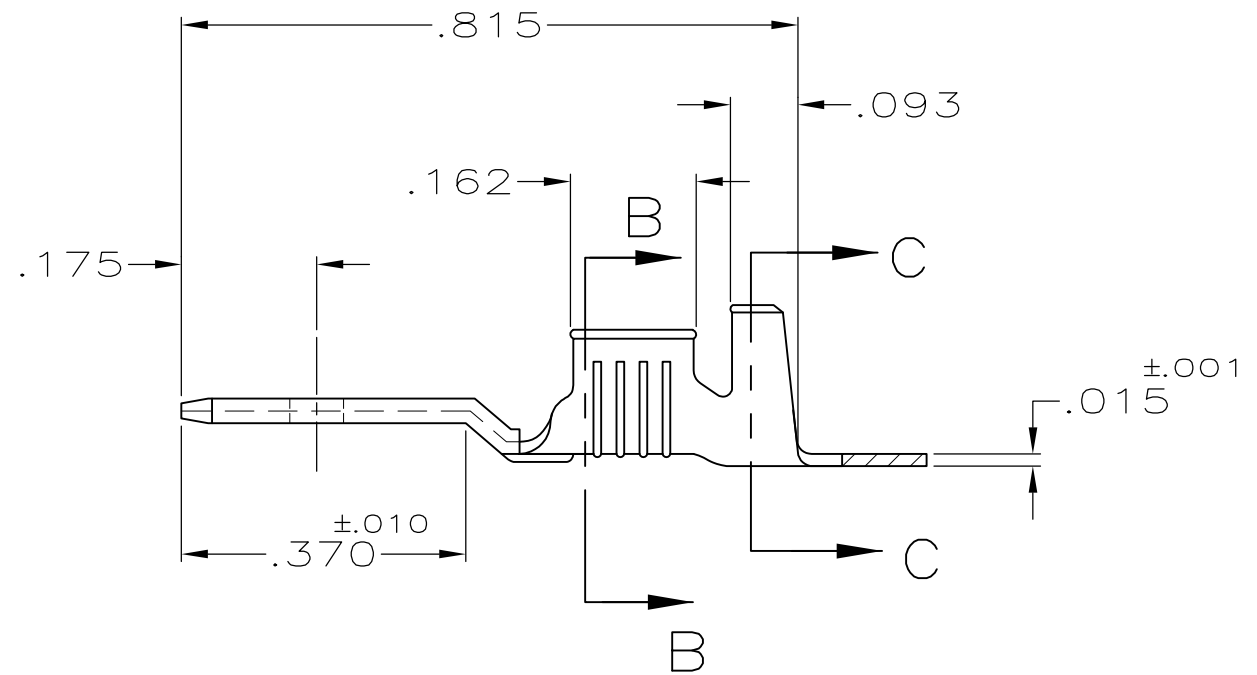
FITS .250 SERIES FASTON RECEPTACLE



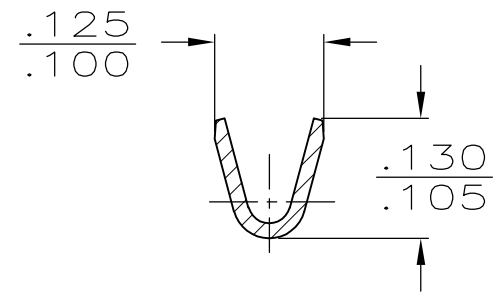
SECTION A-A
SCALE 5:1



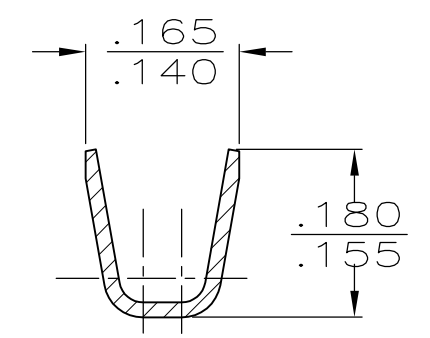
- 1 CONTINUOUS STRIP ON REELS.
- 2 FEED TO BE $.540 \pm .005$.
- 3 REVERSED REEL OF 42475-1.
- 4 REVERSED REEL OF 42475-2.
- 5 FOREIGN PRODUCTION ONLY.



SECTION B-B
SCALE 5:1



SECTION C-C
SCALE 5:1



FINISH	INSULATION RANGE	WIRE SIZE	PART NO
4 TIN	.080-.120 DIA	22-18 AWG	42475-4
3 -			42475-3
5 TIN			42475-2
5 -			42475-1

THIS DRAWING IS A CONTROLLED DOCUMENT.		DWN	JR RUTH	1/31/91	TE Connectivity				
DIMENSIONS: INCHES		CHK	MS FEHER	1/31/91					NAME TAB, FASTON, .250 SERIES
TOLERANCES UNLESS OTHERWISE SPECIFIED:		APVD	C MEYERS	1/31/91	SIZE	CAGE CODE	DRAWING NO	RESTRICTED TO	
0 PLC ± - 1 PLC ± - 2 PLC ± - 3 PLC ± .015 4 PLC ± - ANGLES ± -		PRODUCT SPEC	-		A3	00779	C-42475	-	
MATERIAL: BRASS		FINISH	SEE TABLE		CUSTOMER DRAWING		SCALE	4:1	
						SHEET		1 OF 1	
								REV	J