

A

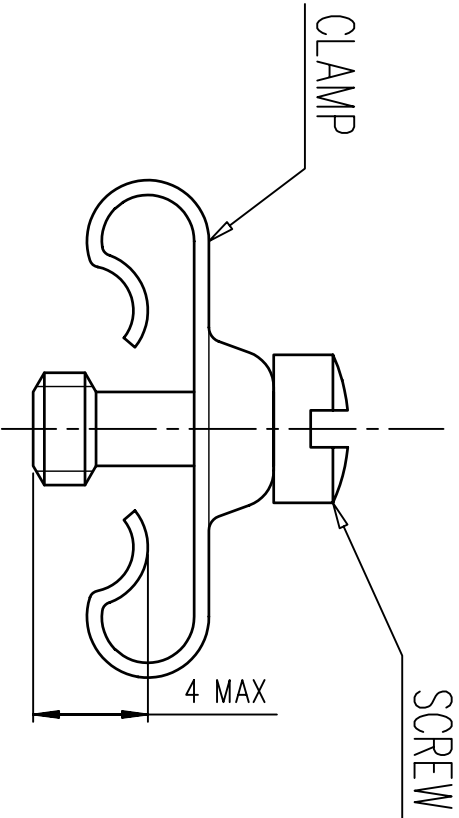
B

C

D

**NOTES**  
Pieces assembly  
Packaging : per 100 pieces  
Material : steel  
Plating : tin  
Thread : UNC 4.40

ASSEMBLY VIEW

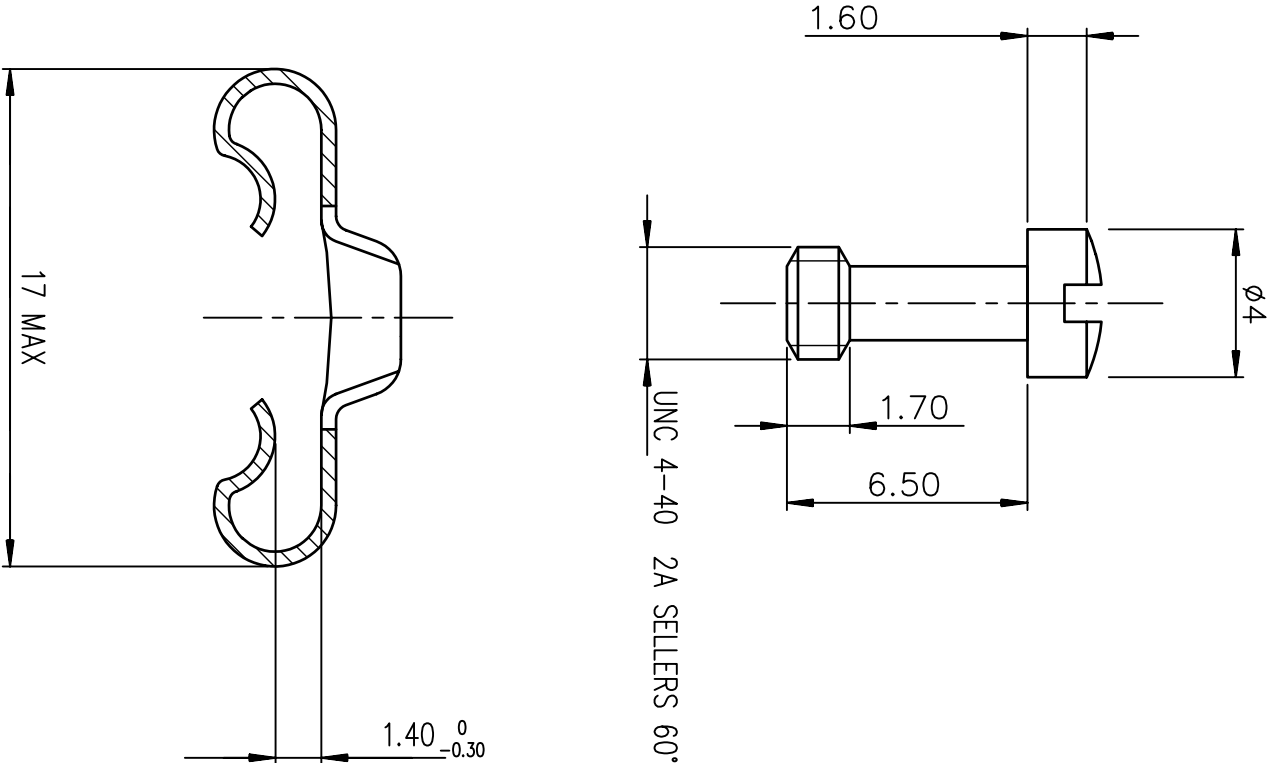


B

A

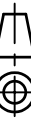
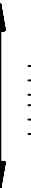
C

D



Part number 863015ATLF

European Views

www.fciconnect.com				surface ISO 1302		✓	tolerance std ISO 406 ISO 1101		projection 		mm 
				TOLERANCES UNLESS OTHERWISE SPECIFIED							
Dr	BART	2004/02/26	ANGULAR		LINEAR		0.X	±0.1	size	A3	Scale 5
Eng	PESSON	2004/02/26					0.XX	±0.1			
Chr	ABHILASH	2011/01/25	0.XX ± 2				0.XXX	±0.1	ECN	ELX-H-011686	
Appr	SUDHIR	2011/01/25	Product family				D-SUB		Spec ref -		
FCI			MALE SCREW LOCKS				no dwg		C01-8655-1588		Rev. G
catalog no			SHELL 50 D SUB ACCESSORIES						CUSTOMER		sheet 1 of 1
							-				

NOTE:ROHS INFORMATIONS

- The "LF" products meet European union Directives and other country regulations as described in GS-22-008.
- Plating Sn (pure bright ) over copper
- Packaging spec: see GS-14-920

rev	ecn no	dr	date
A	-	BAR	2004/02/26
B	LS05-0026	MPE	2005/07/08
C	LS06-0097	LGO	2006/07/28
D	LS09-0006	PCR	2009/01/08
E	111-0022	AMR	2011/01/25
F	ELX-H-011686	PK	2012/05/09
G	ELX-H-011686	PK	2012/05/21



# Mouser Electronics

Authorized Distributor

Click to View Pricing, Inventory, Delivery & Lifecycle Information:

[FCI / Amphenol:](#)

[863015ATLF](#)