

WR-MM IDC press

p/n = 600 690 282 801

Operator manual



First usage:

1- Remove the fasten tie with scissors



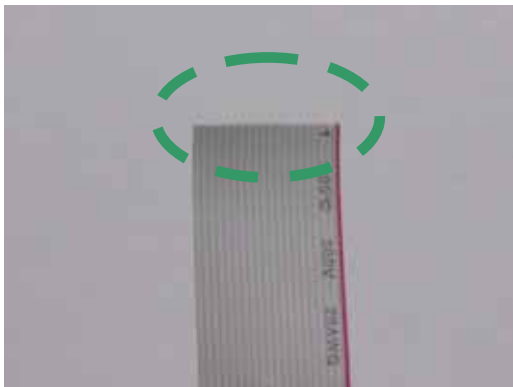
2- Put the handle in the right operating position and fasten it with the nut



Operator manual:

- 1) Cut the extremities of the cable vertically to the roll-up direction of the cable

Good



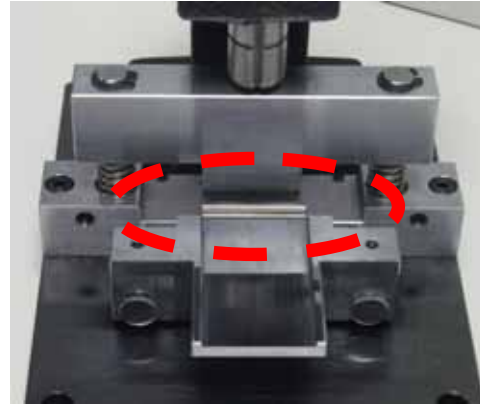
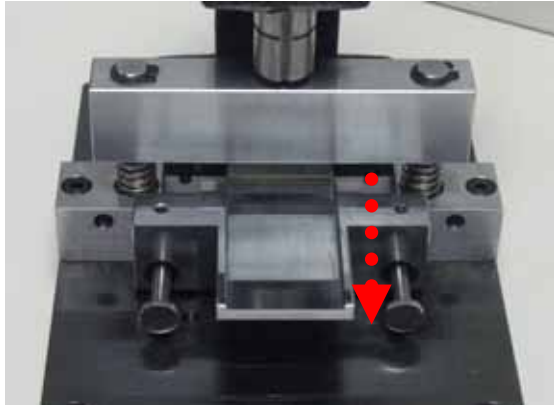
Wrong



- 2) Insert the flat cable between the pre-mounted cover and the connector



3) Pull the bottom metal plate to access the dedicated area of the connector

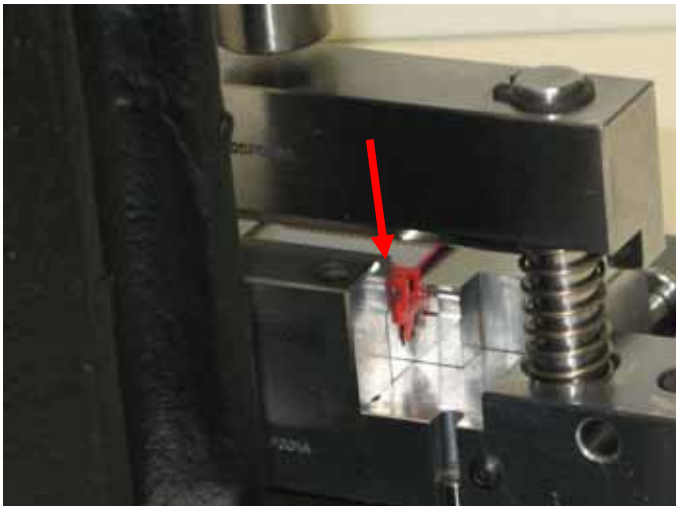


4) Insert the connector and fit its polarisation nose in the left or right dedicated crack depending on the cable assembly type (1 to red or not)

E.G. if left polarization nose..... →left crack alignment



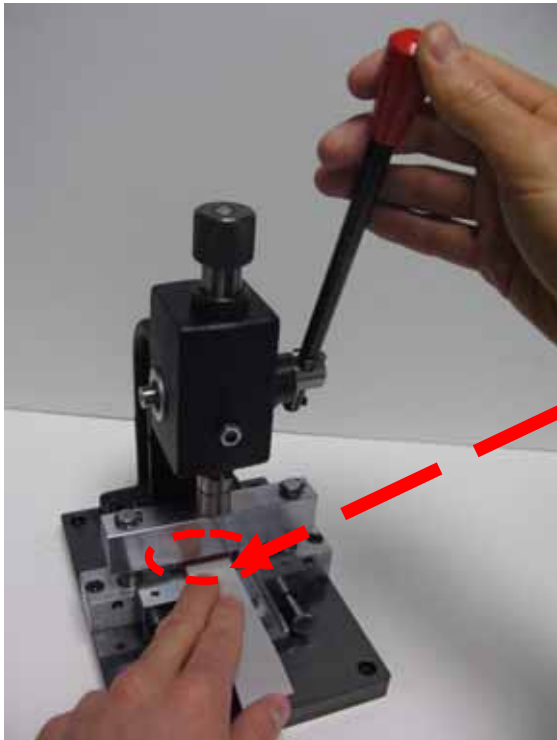
- 5) Move the bottom metal plate to the rear stop and make sure that the extremity of the cable fits with the end of the connector cover.



- 6) Make sure that cable is fully aligned against one side of the bottom metal plate and hold it as flat as possible with your fingers

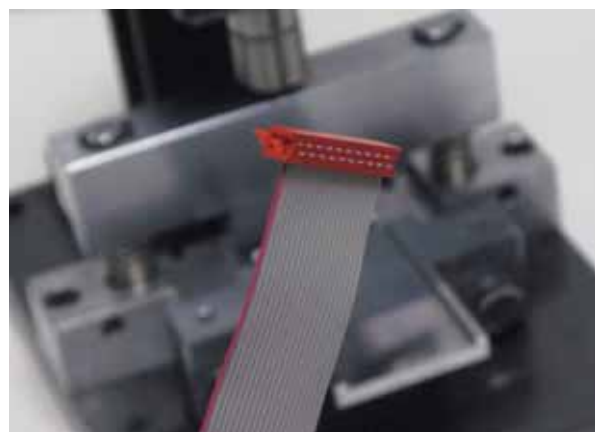
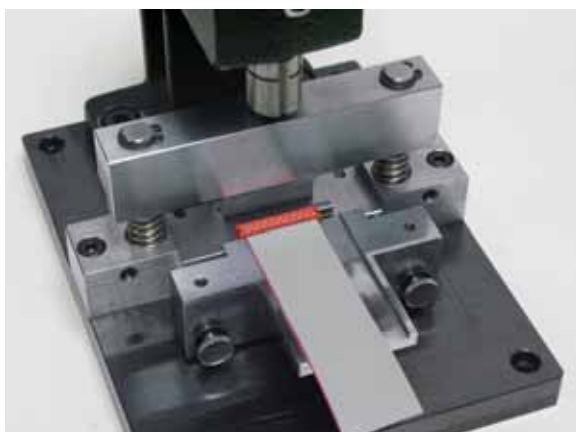


- 7) Pull down the handle slowly till the upper plate touches the bottom plate, you should hear a “click”



**Place your fingers
carefully
Don't place them
below the upper plate**

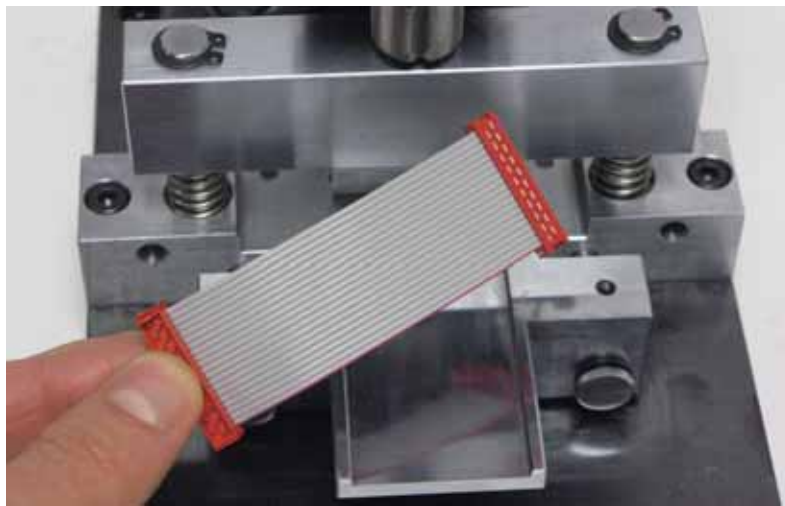
- 8) Remove the handle in its original position, slide back the bottom metal plate and remove the assembly.



9) Assemble the other side of the cable with the same process



Finished product



Mouser Electronics

Authorized Distributor

Click to View Pricing, Inventory, Delivery & Lifecycle Information:

[Wurth Electronics:](#)

[600690282801](#)