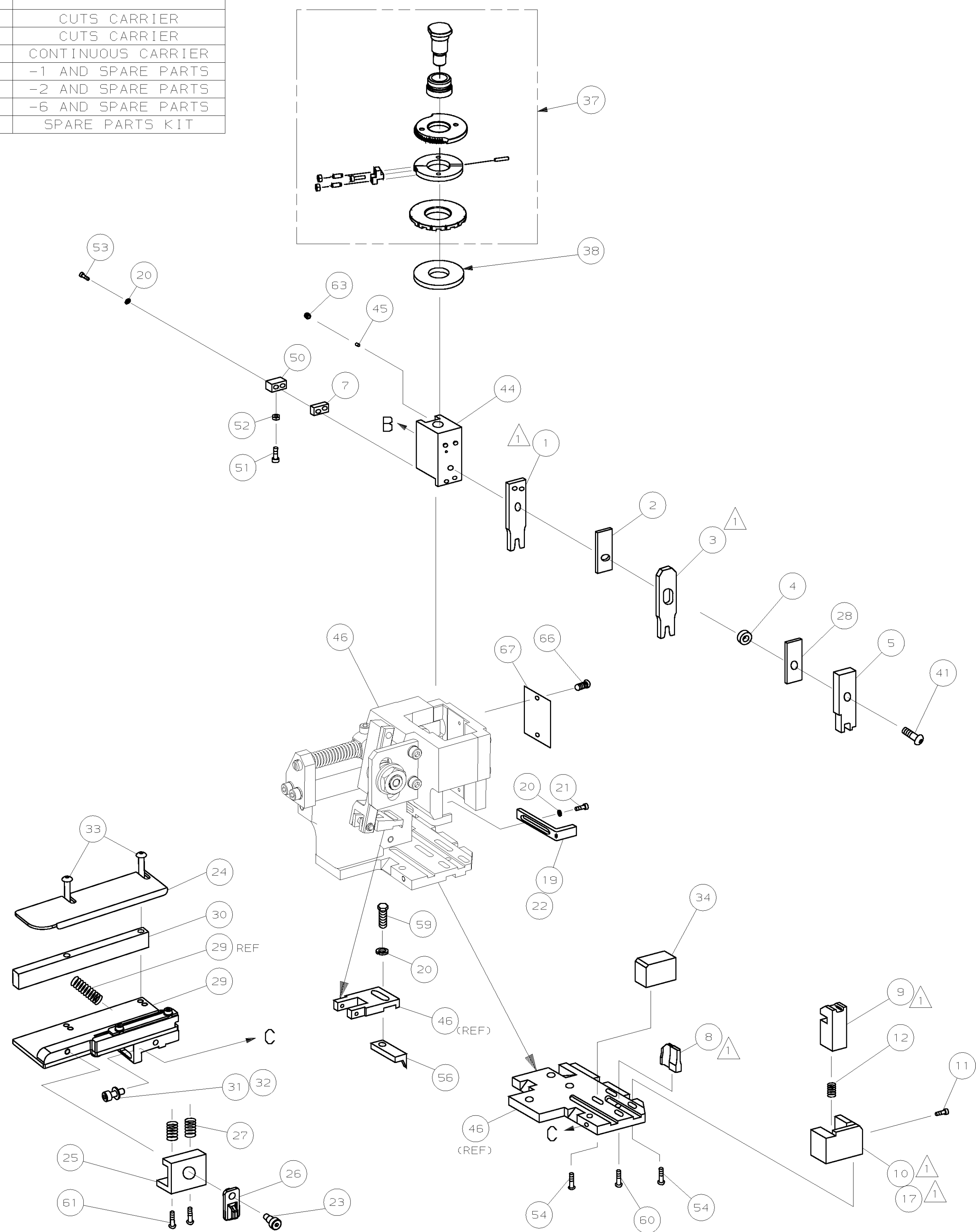
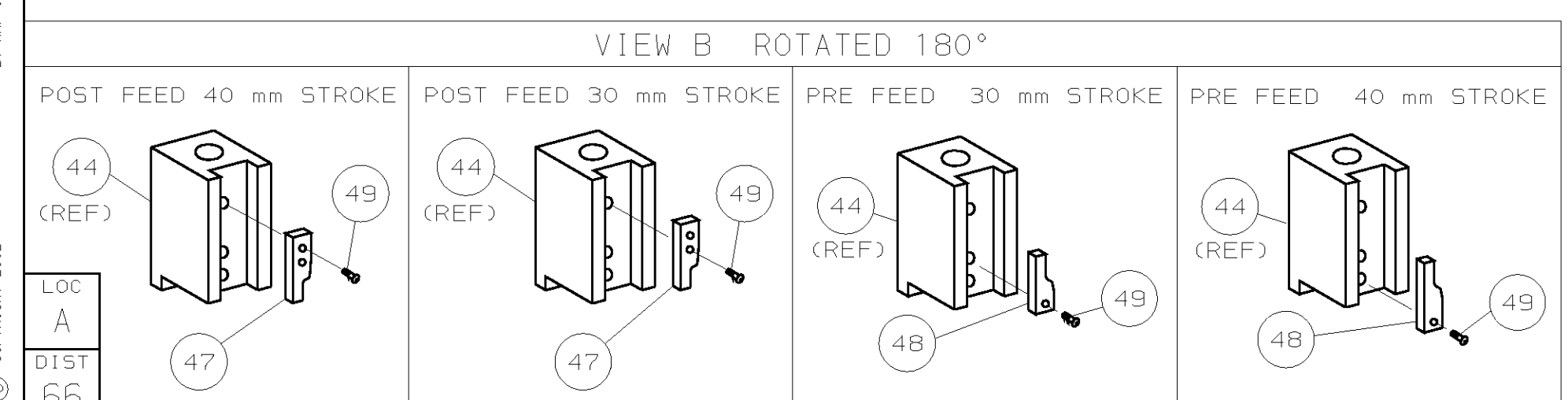


PART NUMBER	REV	FIRST USED	TERMINATOR	FEED TYPE	DESCRIPTION
1528106-1	B	-	LEADMAKER	MECH POST FEED	CUTS CARRIER
1528106-2	B	-	BENCH	MECH PRE FEED	CUTS CARRIER
1528106-6	B	-	LEADMAKER	MECH POST FEED	CONTINUOUS CARRIER
7-1528106-1	B	-	LEADMAKER	MECH POST FEED	-1 AND SPARE PARTS
7-1528106-2	B	-	BENCH	MECH PRE FEED	-2 AND SPARE PARTS
7-1528106-6	B	-	LEADMAKER	MECH POST FEED	-6 AND SPARE PARTS
7-1528106-7	A	-	-	-	SPARE PARTS KIT

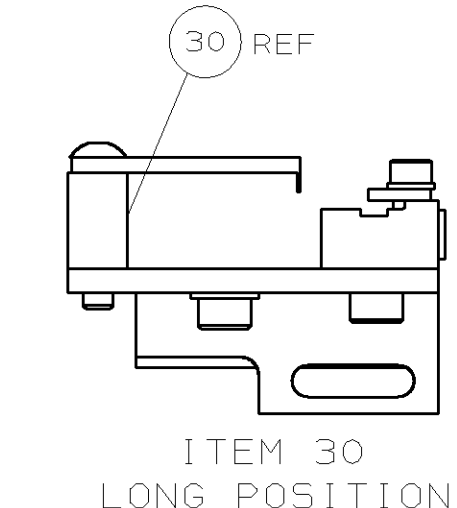
CRIMP DATA AMP TERMINAL AMP CRIMP SPECS			
TERMINAL NAME: REC. CONTACT "55" SIZE			
CRIMP	SIZE	TYPE	RANGE
WIRE	2.79 [.110 IN]	F	0.50-1.25mm ² or 20-16 AWG
INSUL	4.06 [.160 IN]	F	1.80-3.23 [.071-.127 IN]
WIRE STRIP LENGTH		APPL INSTRUCTION	
4.30-4.80 [.169-.189 IN]		408-8322 & 408-8490	
TERMINAL	-	-	FEED
APPL SPEC	114-5206	-	24.50 [.965 IN]
TERMINALS APPLIED			
1318985	-	-	-
-	-	-	-
-	-	-	-
-	-	-	-
-	-	-	-
-	-	-	-
-	-	-	-
-	-	-	-
-	-	-	-
WIRE SIZE	CRIMP HEIGHT	REF SETTING	
mm ² AWG	*		
1.25mm ² or 16 AWG	1.65 ±0.05 [.065 ±.002 IN]	B6	
0.85mm ² or 18 AWG	1.52 ±0.05 [.060 ±.002 IN]	C4	
0.50mm ² or 20 AWG	1.43 ±0.05 [.056 ±.002 IN]	D1	



- RECOMMENDED SPARE PARTS.
- GREASE RAM, CAM, CAM FOLLOWER AND FEED ROD LIGHTLY.
 - LUBRICATE DAILY PER THE APPLICATOR INSTRUCTION SHEET SUPPLIED WITH THE APPLICATOR.



*** WARNING:**
ON INSTALLATION, SET WIRE DISC TO LARGEST WIRE SIZE SETTING. USE OF SETTINGS BELOW MIN REQ'D CRIMP HEIGHT SETTING WILL CAUSE DAMAGE TO CRIMP TOOLING.



QTY	REQD	PER ASSY	PART NO	DESCRIPTION	ITEM NO			
-	1	1	1	1	1	1528106	PRINT, APPLICATOR LOG SHEET	73
-	1	1	1	1	1	1338705-3	DOCUMENTATION PACKAGE	71
-	-	-	-	-	-	-	-	70
-	-	-	-	-	-	-	-	69
-	-	-	-	-	-	-	-	68
-	1	1	1	1	1	461264-5	PLATE, IDENTIFICATION	67
-	2	2	2	2	2	21017-2	SCR,DRIVE (#2x.19) ID PLATE	66
-	-	-	-	-	-	-	-	65
-	-	-	-	-	-	-	-	64
-	1	1	1	1	1	3-18031-0	SCR,SKT SET (M6X6) RAM	63
-	-	-	-	-	-	-	-	62
-	2	2	2	2	2	1-18024-5	SCR,BHC (M5X25) DRAG	61
-	1	1	1	1	1	18024-7	SCR,BHC (M4X10) ANVIL	60
-	1	1	1	1	1	5-18022-2	SCR,HEX (M4X8) FEED FINGER	59
-	-	-	-	-	-	-	-	58
-	-	-	-	-	-	-	-	57
-	1	1	1	1	1	1338685-1	PAWL, FEED	56
-	-	-	-	-	-	-	-	55
-	4	4	4	4	4	18024-8	SCR,BHC (M4X12) SHEAR HOLDER	54
-	2	2	2	2	2	9-18023-6	SCR,SHC (M4X14) TERM HLD DWN	53
-	1	1	1	1	1	18030-1	NUT,HEX (M3) HOLD DOWN	52
-	1	1	1	1	1	811242-5	BUMPER, HOLDDOWN	51
-	1	1	1	1	1	690753-2	SPACER, TONKER	50
-	1	1	1	1	1	18024-3	SCR,BHC (M3X10) CAM	49
-	-	-	-	-	-	-	-	48
-	1	-	1	-	1	1338676-1	CAM, POST FEED 30 & 40 mm ST	47
-	1	1	1	1	1	1320999-4	APPLICATOR BASIC SUBASSY	46
-	1	1	1	1	1	690191-1	PLUG, NYLON	45
-	1	1	1	1	1	1338660-1	RAM	44
-	-	-	-	-	-	-	-	43
-	-	-	-	-	-	-	-	42
-	1	1	1	1	1	2-18024-6	SCR,BHC (M8X25) RAM	41
-	-	-	-	-	-	-	-	40
-	-	-	-	-	-	-	-	39
-	1	1	1	1	1	469367-9	SPACER, FINE ADJUST	38
-	1	1	1	1	1	879103-2	FINE ADJUST HEAD SUBASSY	37
-	-	-	-	-	-	-	-	36
-	-	-	-	-	-	-	-	35
-	1	1	1	1	1	1320934-1	SUPPORT, TERMINAL	34
-	2	2	2	2	2	1-18024-0	SCR,BHC (M4X20) STRIP GUIDE	33
-	1	1	1	1	1	18027-2	WASHER, FLAT (M4)	32
-	1	1	1	1	1	1-18023-2	SCR,SKT CAP (M4X12) MOUNT BLOCK	31
-	1	1	1	1	1	1-1320908-0	SPACER, STRIP GUIDE	30
-	1	1	1	1	1	1633073-1	STRIP GUIDE PLATE ASSY	29
-	1	1	1	1	1	455888-3	SPACER, FRONT SHEAR DEP	28
-	2	2	2	2	2	1-22284-0	SPRING, DRAG	27
-	1	1	1	1	1	356835-1	LEVER, DRAG RELEASE	26
-	1	1	1	1	1	240792-1	DRAG, TERMINAL	25
-	1	1	1	1	1	1320928-2	PLATE, STRIP GUIDE	24
-	1	1	1	1	1	980371-4	SCR,SHC SHLD	23
-	1	-	1	-	1	690472-2	STRIPPER	22
-	1	1	1	1	1	1-18023-1	SCR,SHC (M4X10) STRIPPER	21
-	4	4	4	4	4	18025-2	WASHER, LOCK (M4) STRIPPER	20
-	-	1	-	-	1	690472-1	STRIPPER	19
-	-	-	-	-	-	-	-	18
-	1	-	-	1	-	1338684-1	HOLDER, SHEAR, FRONT (NO-CUT)	17
-	-	-	-	-	-	-	-	16
-	-	-	-	-	-	-	-	15
-	-	-	-	-	-	-	-	14
-	1	1	1	1	1	5-22280-0	SPRING, SHEAR	13
-	1	1	1	1	1	356885-4	STOP, SHEAR	12
-	-	1	1	-	1	1320921-1	HOLDER, SHEAR, FRONT (CUT)	11
-	1	1	1	1	1	1-462006-6	SHEAR, FLOAT (FRONT)	10
1	2	2	2	1	1	2-1333207-1	ANVIL	9
-	1	1	1	1	1	240641-2	SPACER, DEPRESSOR (REAR)	8
-	-	-	-	-	-	-	-	7
-	1	1	1	1	1	2-455889-0	DEPRESSOR, SHEAR (FRONT)	6
-	1	1	1	1	1	238011-4	SPACER, BLOCK CRIMPER	5
1	2	2	2	1	1	7-456134-5	CRIMPER, INSULATION	4
-	1	1	1	1	1	1-455888-3	SPACER, CRIMPER	3
1	2	2	2	1	1	456408-2	CRIMPER, WIRE	2
-	-	-	-	-	-	-	-	1

DIMENSIONS: mm [INCHES]		MATL	HT TR	FIN
DO NOT SCALE PRINT.		-	-	-
TOLERANCES UNLESS OTHERWISE SPECIFIED:				
1	PLC DEC ±			
2	PLC DEC ±			
3	PLC DEC ±			
ANGLES ± -				
SURF TEXTURE: ✓				
REMOVE BURRS, BREAK SHARP EDGES RO.38 MAX				
DR M. CLIFFORD		29APR02	APP F. BACKHURST	29APR02
CHK -		REL 20-06-02	M. CLIFFORD	
NAME		FINE ADJ SIDE FD HD-I APPL		MACHINE REF
SCALE		DWG NO 1528106		HD-I APPL
CASE CODE 00779		CUSTOMER AND ASSEMBLY DRAWING		SHEET 1 OF 1
				REV B

THIS DRAWING IS A CONTROLLED DOCUMENT.

LAYOUT L1528106
SET UP GAGE 458637-3

2002
RELEASER FOR PUBLICATION
BY AMP INCORPORATED. ALL RIGHTS RESERVED.

Mouser Electronics

Authorized Distributor

Click to View Pricing, Inventory, Delivery & Lifecycle Information:

[TE Connectivity:](#)

[1528106-1](#)