

4

3

2

1

THIS DRAWING IS UNPUBLISHED.

RELEASED FOR PUBLICATION

© COPYRIGHT

ALL RIGHTS RESERVED.

LOC

DIST


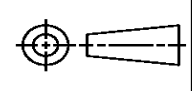
REVISIONS

| P | LTR | DESCRIPTION | DATE | DWN | APVD |
|---|-----|---------------|-----------|-----|------|
| | C1 | ECR-14-002336 | 18FEB2014 | GK | HMR |
| | | | | | |
| | | | | | |
| | | | | | |

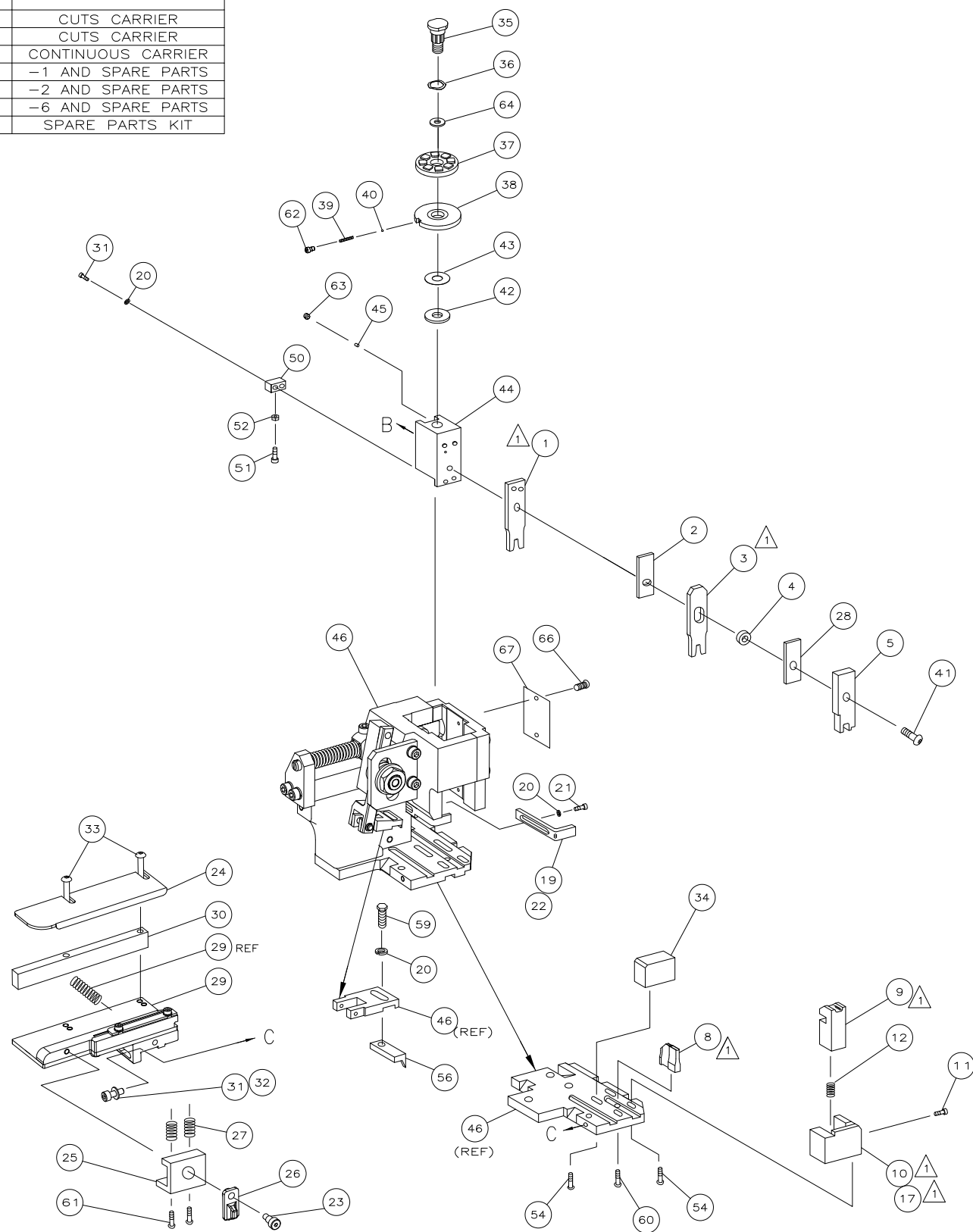
REPLACED BY OCEAN STYLE APPLICATOR PART
NUMBER 2151373-1

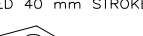


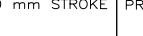
FOR REPLACEMENT PARTS FOR APPLICATOR 1426456
REFER TO ADDITIONAL PAGE(S). SPARE PARTS KIT (IF LISTED)
WILL REMAIN AVAILABLE.

THE REPLACEMENT OCEAN STYLE APPLICATOR HAS THE
SAME TERMINATOR/PRESS INTERFACE AS APPLICATOR
1426456

| | | | | | | | |
|---|--|----------------------|--|---|-----------|--------------------------|---------------|
| THIS DRAWING IS A CONTROLLED DOCUMENT. | | DWN GOPALAKRISHNA HV | |  TE Connectivity | | | |
| DIMENSIONS: | | CHK RAGHAVENDRA | | | | | |
|  | | APVD RAGHAVENDRA | | NAME SIDE FEED HD-I APPLICATOR | | | |
| | | PRODUCT SPEC | | | | | |
| | | APPLICATION SPEC | | | | | |
| MATERIAL | | WEIGHT | | SIZE A3 | CAGE CODE | DRAWING NO C- 1426456 | RESTRICTED TO |
| FINISH | | CUSTOMER DRAWING | | SCALE | | SHEET 1 OF 2 | REV C1 |

1. RECOMMENDED SPARE PARTS.
2. GREASE RAM, CAM, CAM FOLLOWER AND FEED ROD LIGHTLY.
3. LUBRICATE DAILY PER THE APPLICATOR INSTRUCTION SHEET SUPPLIED WITH THE APPLICATOR.



| | POST FEED 40 mm STROKE | POST FEED 30 mm STROKE | PRE FEED 30 mm STROKE | PRE FEED 40 mm STROKE |
|---|---|---|---|-----------------------|
|  |  |  |  | |
| LOC A | | | | |
| DIST 66 | | | | |

DRAWING NUMBER - 1426456 SHEET 2 OF 2 REV. C1

Mouser Electronics

Authorized Distributor

Click to View Pricing, Inventory, Delivery & Lifecycle Information:

[TE Connectivity:](#)

[1426456-1](#)