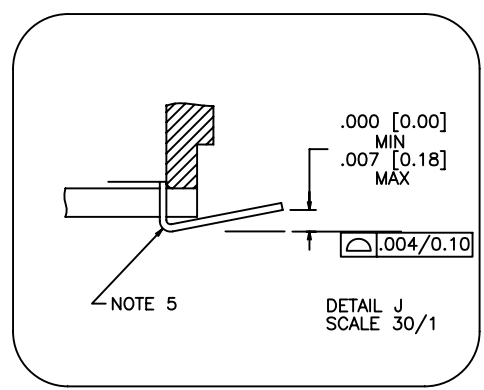
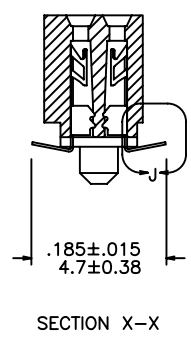
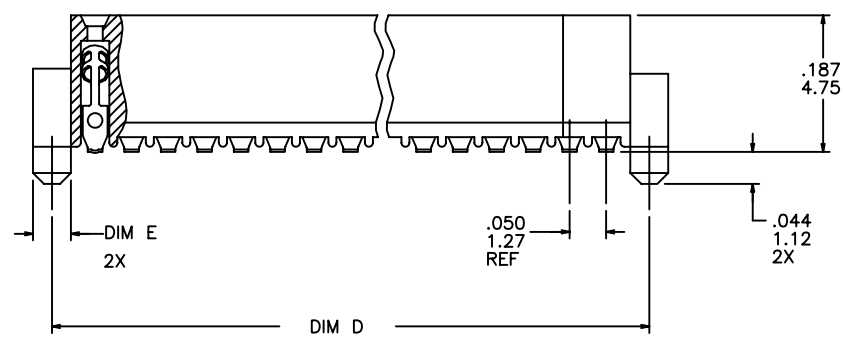
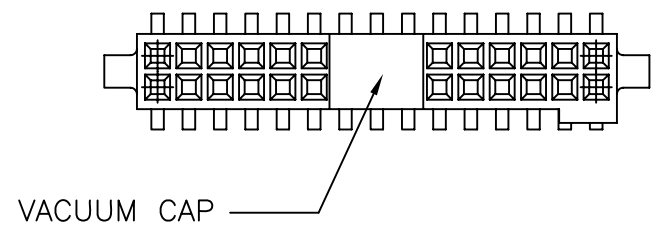
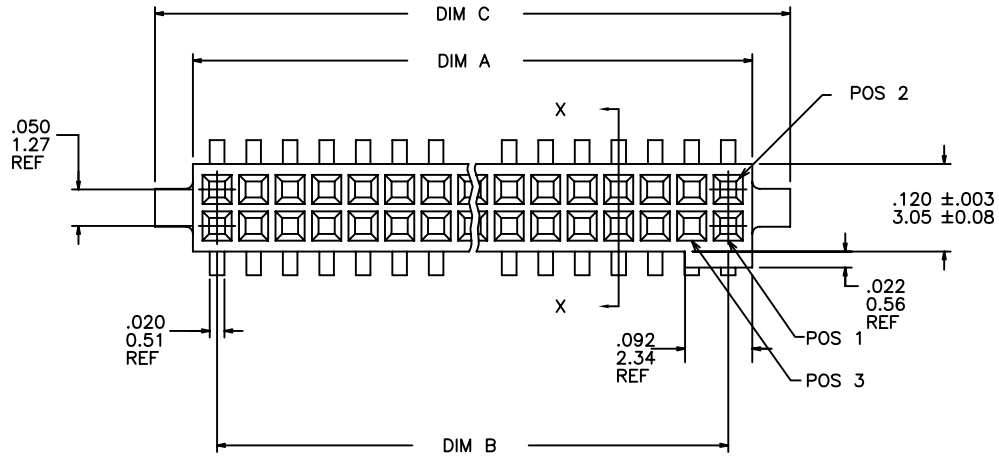


PRODUCT NUMBER
SEE TABLE



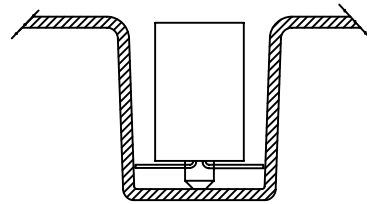
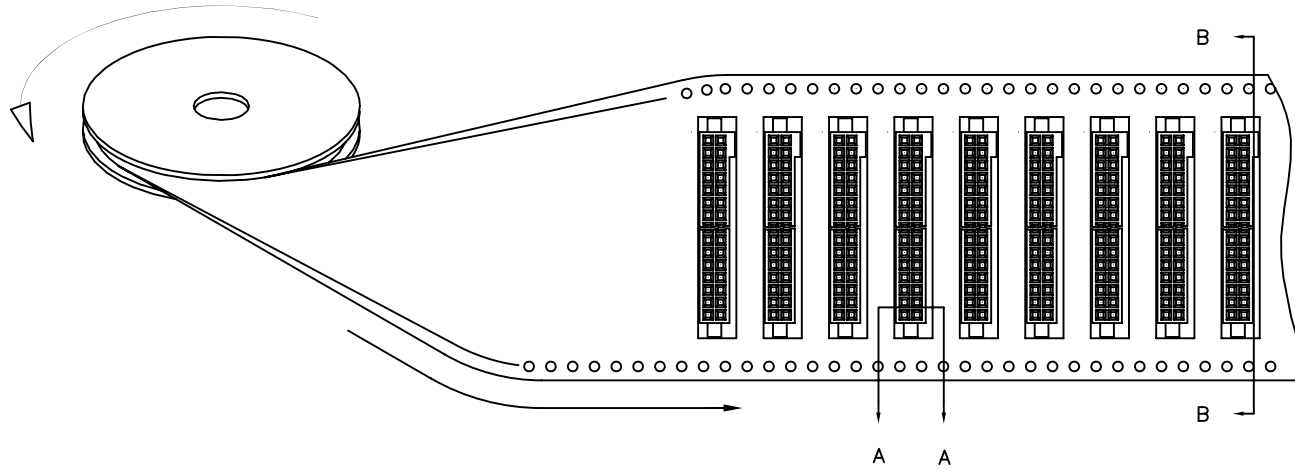
mat'l. code		-		surface		ISO 1302 ✓		tolerance		ISO 406		projection		product family	
ISO 1101		tolerances unless otherwise specified		linear		XX±.01/XX±0.3		INCH/MM		RIB CAGE		title			
angles		linear		XXX±.005/XXX±0.13		scale 1:1		.050cc VERT. SMT.		W/LOC. & POL. FEATURE		sheet 1 of 3		size	
σ±z'		XXXX±.0020/XXX±0.051		AD M09-0058		CMR 4/06/09		dr M. CLOUSER		6/26/91		dwg no		87024	
sheet		revision		AH AH AH		AE M09-0071		MHT 4/30/09		enr B. BARUFFALO		6/26/91		A3	
index		sheet		1 2 3		AF N10-0174		YOH 6/17/10		chr B. BARUFFALO		6/26/91		type	
						AG ELX-N-010202		YO 2/8/12		app B. BARUFFALO		6/26/91		Product Customer Drawing	

FCJ
 FCJconnect.com
 Copyright FCJ

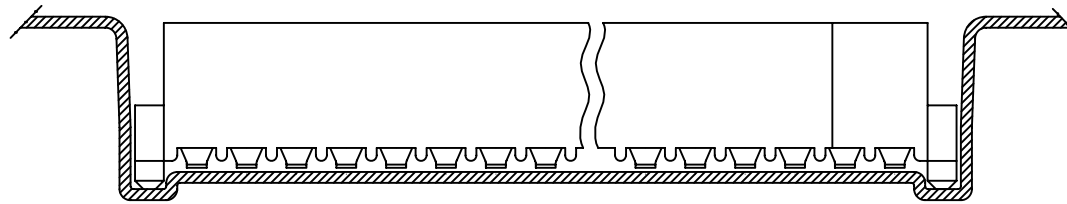
REFERENCE ONLY

TAPE WIDTH'S 32mm AND ABOVE HAS BOTH FEED TRACKS, BELOW 32mm HAS TOP FEED TRACK ONLY.

UNREELING DIRECTION



SECTION A-A



SECTION B-B



FCJconnect.com

Copyright FCI

mat'l. code		surface		tolerance		projection		product family	
-		ISO 1302 ✓		ISO 406		INCH/MM		RIB CAGE	
tolerances unless otherwise specified		angles		linear		scale 1:1		title	
		σ±z		XX±.01/XX±0.3				.050cc VERT. SMT.	
				XXX±.005/XXX±0.13				W/LOC. & POL. FEATURE	
				XXXX±.0020/XXX±0.051				dwg no	
		dr		M. CLOUSER		6/26/91		sheet 3 of 3	
		enr		B. BARUFFALO		6/26/91		size	
		chr		B. BARUFFALO		6/26/91		A3	
		app		B. BARUFFALO		6/26/91		type	
								Product Customer Drawing	
sheet index		revision sheet							

PRODUCT NO. NOTE 9	SIZE	DIM A	DIM B	DIM C	DIM D	DIM E	SPECIAL PACKAGING	TAPE WIDTH PITCH	PIECES PER REEL
87024-605	2 X 5	.266/6.756	.200/5.08	.370/9.398	.3200/8.128	ø.0520/1.321	NOTE 6	24mm 12mm	750
-610	2 X 10	.516/13.106	.450/11.43	.620/15.748	.5700/14.478	ø.0520/1.321	NOTE 6	24mm 12mm	750
-610P	2 X 10	.516/13.106	.450/11.43	.620/15.748	.5700/14.478	ø.0520/1.321	NOTE 8	24mm 16mm	400
-615	2 X 15	.766/19.456	.700/17.78	.870/22.098	.8200/20.828	ø.0520/1.321	NOTE 6	44mm 12mm	500
-620	2 X 20	1.016/25.806	.950/24.13	1.120/28.448	1.0700/27.178	ø.0520/1.321	NOTE 6 & 7	44mm 12mm	500
-625	2 X 25	1.266/32.156	1.200/30.48	1.370/34.798	1.3200/33.528	ø.0520/1.321	NOTE 6	56mm 12mm	500
-630	2 X 30	1.516/38.506	1.450/36.83	1.620/41.148	1.5700/39.878	ø.0520/1.321	NOTE 6 & 7	56mm 12mm	500
-635	2 X 35	1.766/44.856	1.700/43.18	1.870/47.498	1.8200/46.228	ø.0520/1.321	NOTE 6	72mm 12mm	500
-640	2 X 40	2.016/51.206	1.950/49.53	2.120/53.848	2.0700/52.578	ø.0520/1.321	NOTE 6 & 7	72mm 12mm	500
-645	2 X 45	2.266/57.556	2.200/55.88	2.370/60.198	2.3200/58.928	ø.0520/1.321	NOTE 6	72mm 12mm	500
-650	2 X 50	2.516/63.906	2.450/62.23	2.620/66.548	2.5700/65.278	ø.0520/1.321	NOTE 6 & 7	88mm 12mm	500
-625S	2 X 25	1.266/32.156	1.200/30.48	1.370/34.798	1.3200/33.528	ø.0394/1.00	NOTE 6	56mm 12mm	500

NOTES:

- HOUSING MATERIAL:
LCP GLASS FILLED FLAME RETARDANT PER UL 94V-0
COLOR: NATURAL
- TERMINAL MATERIAL: BeCu
- TERMINAL PLATING:
30u"/.76um MIN HARD GOLD OR GXT OVER Ni ON CONTACT ZONES,
100u"/2.54um MIN TIN OVER Ni IN SOLDERING ZONES,
OTHERWISE GOLD FLASH OR UNPLATED.
- APPLICATION INFORMATION:
A. RECOMMENDED MOUNTING PAD PATTERN IS
SHOWN IN FIGURE "A".
B. MATING PINS TO BE .0176/0.447 TO .0181/0.459 DIA.
C. MATING PIN TIPS TO BE IN TRUE POSITION TO MATING
GRID WITHIN .006/0.15 DIA.
D. SUGGESTED MATING PIN LENGTH .130/3.30
±.010/0.25.
- LEAD TIPS TO BE ABOVE HEEL, UP TO .007/0.18 MAX.
COPLANARITY TO BE MEASURED AT LOWEST POINT (HEEL).
- IF LF P/N THE PRODUCT MEETS EUROPEAN UNION DIRECTIVES AND OTHER
COUNTRY REGULATION AS DESCRIBED IN GS-22-008.
- THE HOUSING WILL WITHSTAND EXPOSURE TO 260°C PEAK TEMPERATURE
FOR 20 SECONDS IN A CONVECTION, INFRA-RED OR VAPOR PHASE REFLOW
OVEN. SEE APPLICATION NOTES/PROCEDURES IF THEY ARE AVAILABLE.
- PRODUCT SPEC PER BUS-12-087.
- PN DEFINE:

87024-605XXXLF

LEAD FREE

WITH "TR": TAPE AND REEL+CAP
WITHOUT "CT": TUPE+CAP

WITH "P": THE CARRIER'S PITCH IS 16MM
WITHOUT "P": THE CARRIER'S PITCH IS 12MM

WITH "S": THE POST'S DIAMETER IS 1.00MM, FOR FIGURE B
WITHOUT "S": THE POST'S DIAMETER IS 1.321MM, FOR FIGURE A

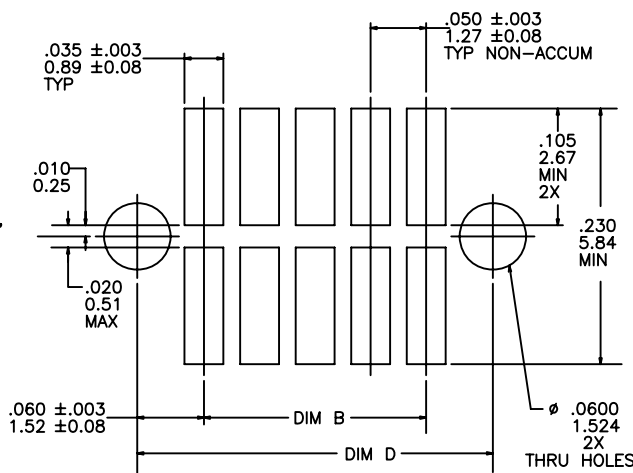


FIGURE A
RECOMMENDED
P.C.B. LAYOUT

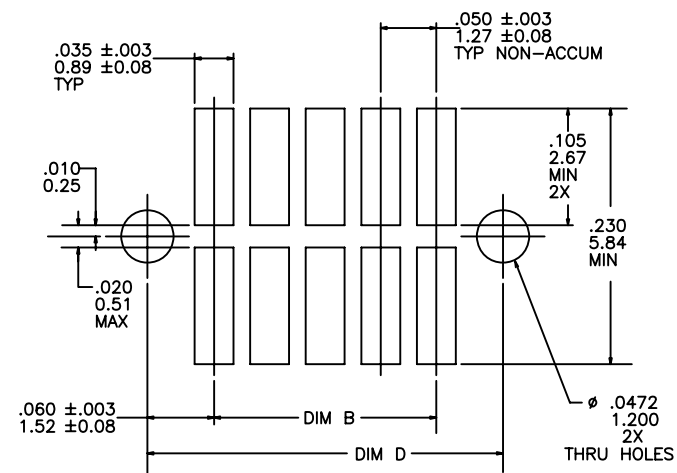


FIGURE B
RECOMMENDED
P.C.B. LAYOUT

mat'l. code		surface		tolerance		projection		product family	
-		ISO 1302		ISO 406		INCH/MM		RIB CAGE	
tr		ecn		no		dr		date	
AH									
		angles		linear		scale 1:1		title	
								.050cc VERT. SMT. W/LOC. & POL. FEATURE	
		dr		M. CLOUSER		6/26/91		dwg no	
		enr		B. BARUFFALO		6/26/91		sheet 2 of 3	
		chr		B. BARUFFALO		6/26/91		size	
		app		B. BARUFFALO		6/26/91		A3	
sheet		revision						type	
index		sheet						Product Customer Drawing	

Mouser Electronics

Authorized Distributor

Click to View Pricing, Inventory, Delivery & Lifecycle Information:

[FCI / Amphenol:](#)

[87022-605](#) [87022-605TR](#) [87022-620TR](#) [87024-610](#) [87024-650](#) [87024-630](#) [87024-620LF](#) [87024-605](#) [87022-615TR](#) [87022-615TRLF](#) [87022-625TRLF](#) [87024-605TRLF](#) [87024-610TRLF](#) [87024-615CTLF](#) [87024-615TR](#) [87024-615TRLF](#) [87024-620CTLF](#) [87024-620TRLF](#) [87024-625TRLF](#) [87024-630CTLF](#) [87024-630TR](#) [87024-630TRLF](#) [87024-640CTLF](#) [87024-650CTLF](#) [87022-625TR](#) [87024-610P](#) [87024-640TRLF](#) [87022-610TRLF](#) [87024-640LF](#) [87022-610](#) [87022-615](#) [87022-620](#) [87022-635](#) [87022-640](#) [87022-645](#) [87022-650](#) [87024-615](#) [87024-625](#) [87024-635](#) [87024-645](#) [87022-605LF](#) [87022-610LF](#) [87022-615LF](#) [87022-620LF](#) [87022-625LF](#) [87022-630LF](#) [87022-635LF](#) [87022-640LF](#) [87022-645LF](#) [87022-650LF](#) [87024-605LF](#) [87024-610LF](#) [87024-625LF](#) [87024-630LF](#) [87024-635LF](#) [87024-645LF](#) [87024-650LF](#) [87022-605TRLF](#) [87022-620TRLF](#) [87024-620](#) [87024-640](#) [87022-610TR](#) [87022-630TRLF](#) [87024-605CTLF](#) [87024-625CTLF](#) [87024-615LF](#) [87024-645TRLF](#) [87022-635TRLF](#) [87022-650TRLF](#) [87024-635TRLF](#) [87022-640TRLF](#) [87022-645TRLF](#) [87024-650TRLF](#) [87022-115LF](#) [87022-115](#)