

LOC		DIST		REVISIONS				
P	LYR	DESCRIPTION			DATE	DWN	APVD	
	A1	REVISED PER ECR-12-011660			24JAN2013	KH	TM	

1. PARTS COMPLY TO AMP SOLDERABILITY SPECIFICATION 109-11-3.

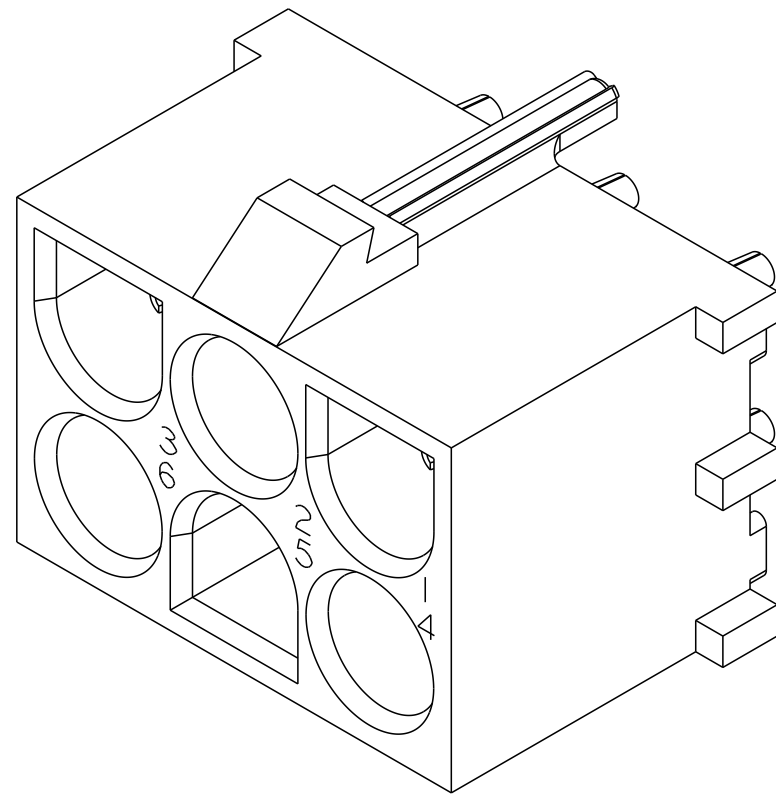
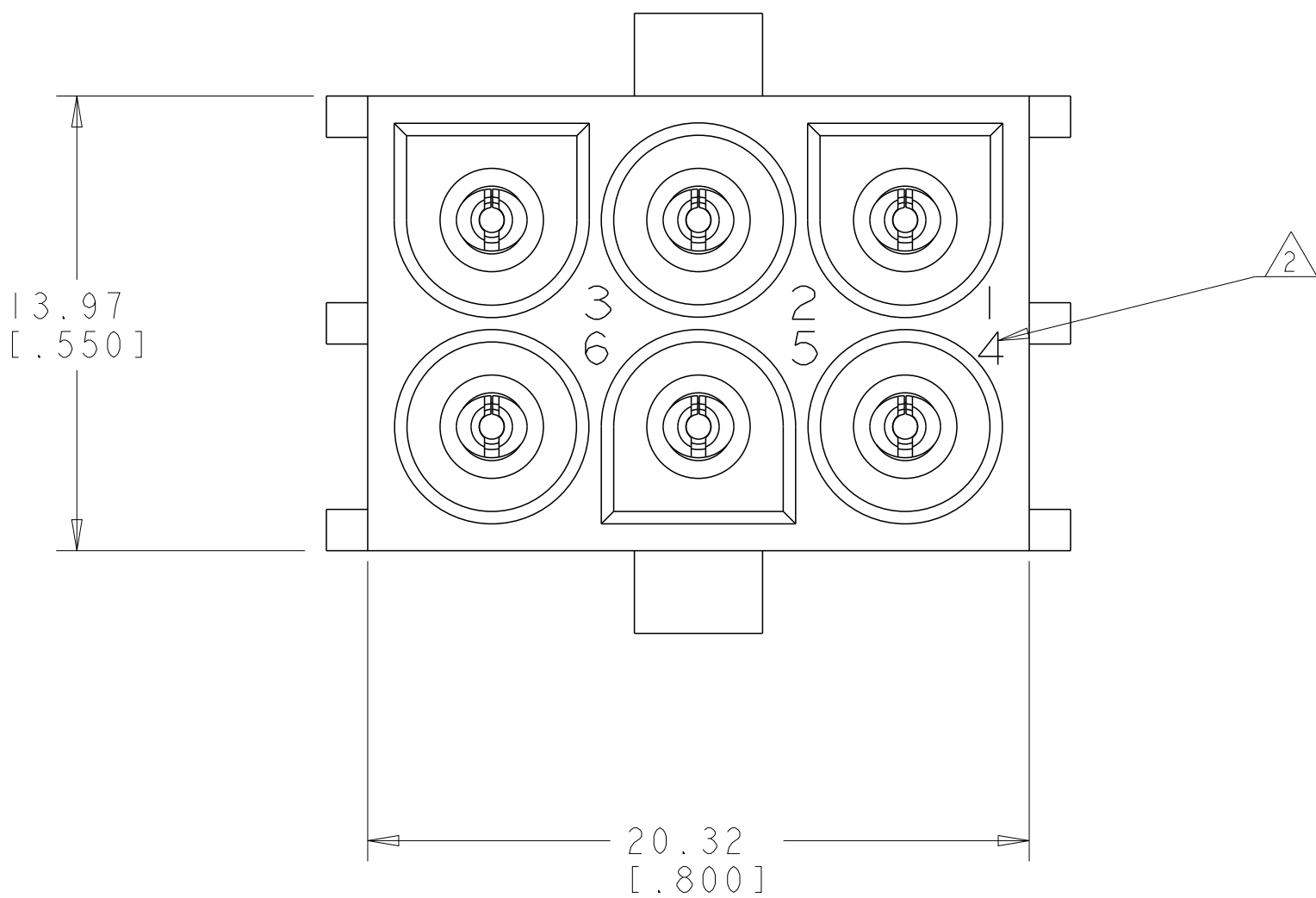
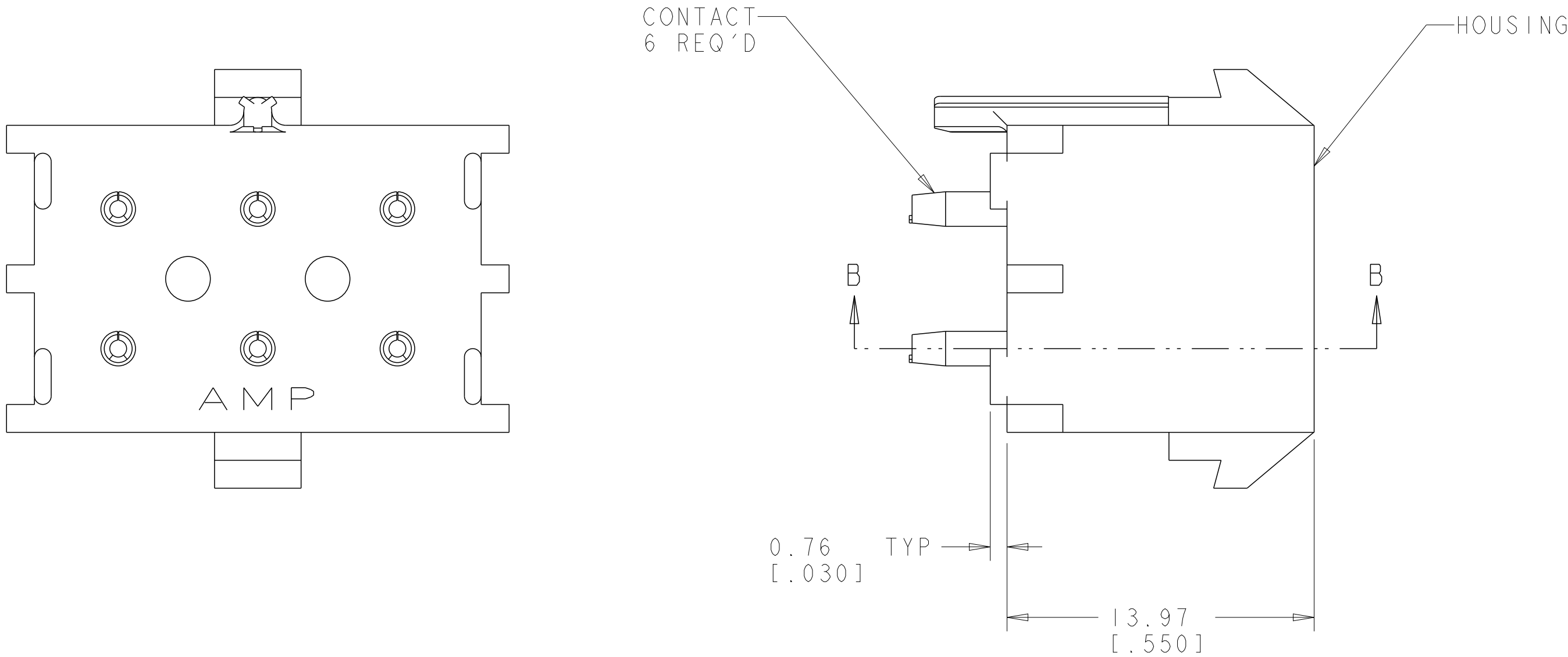
2. CIRCUIT IDENTIFICATION CHARACTERS ARE ADJACENT TO THE INDICATED CAVITIES, BUT LOCATION AND ORIENTATION MAY DIFFER FROM PRINT.

3. DIMENSIONS IN BRACKETS ARE IN INCHES.

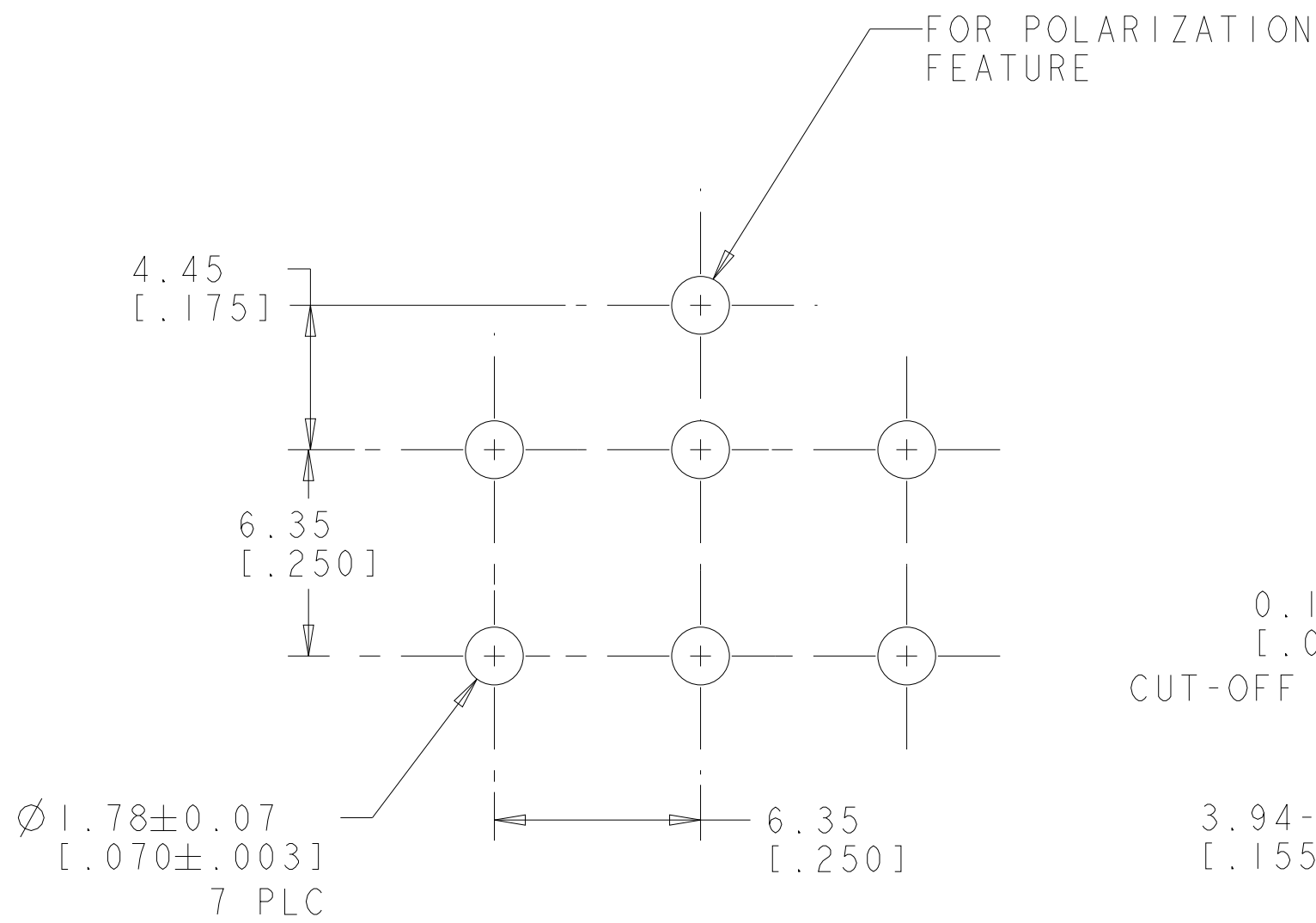
4. CONTACT IS PLATED OVERALL WITH 0.00127 [0.000050] NICKEL, THEN 0.00076 [0.000030] GOLD OVER CONTACT LENGTH INDICATED AND MATTE TIN LEAD ON SOLDER TAIL END.

5. CONTACT IS PLATED OVERALL WITH 0.00127 [0.000050] NICKEL, THEN 0.00076 [0.000030] GOLD OVER CONTACT LENGTH INDICATED AND MATTE TIN ON SOLDER TAIL END.

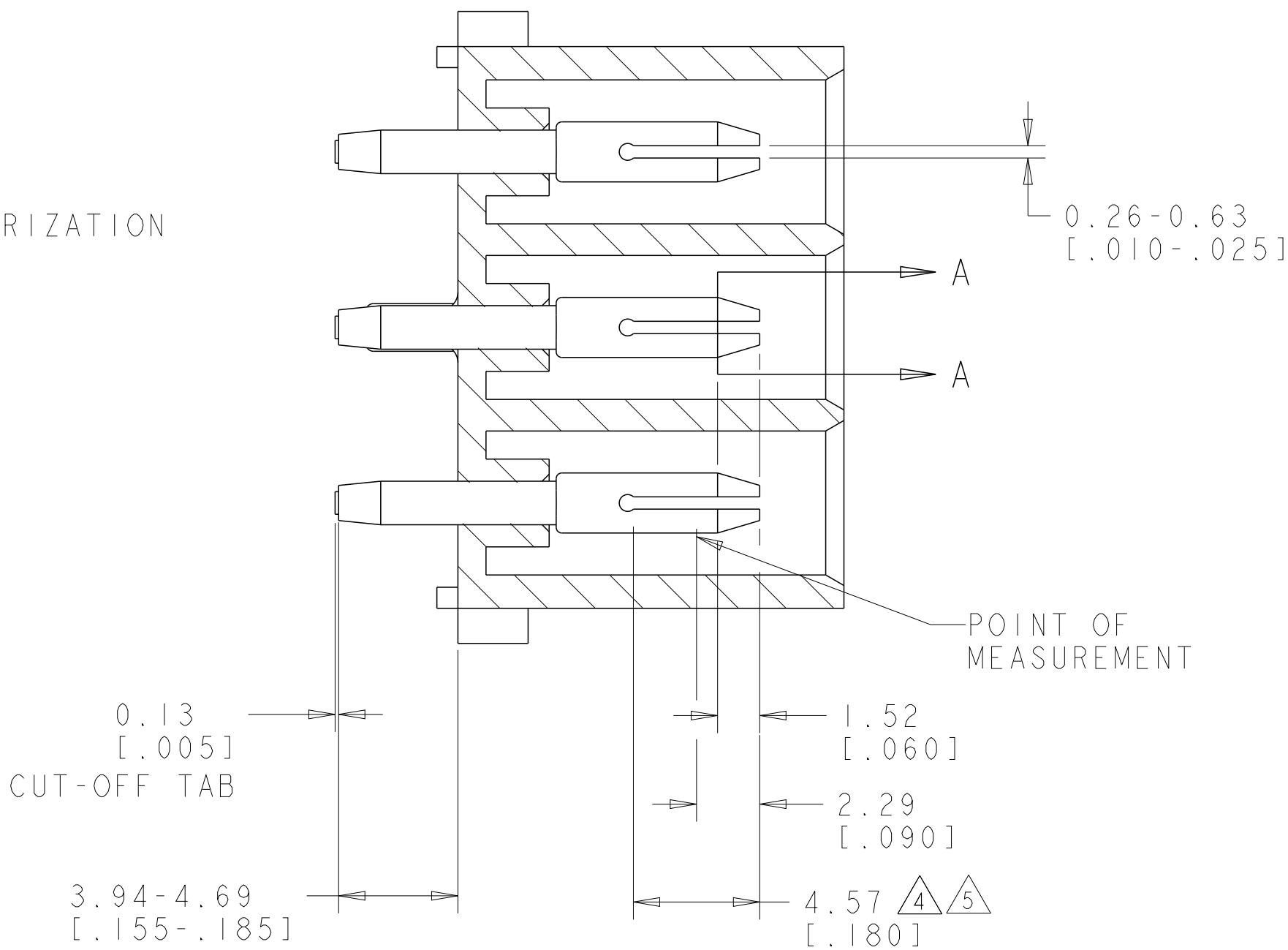
6. SUPERSEDED BY 1586090-3



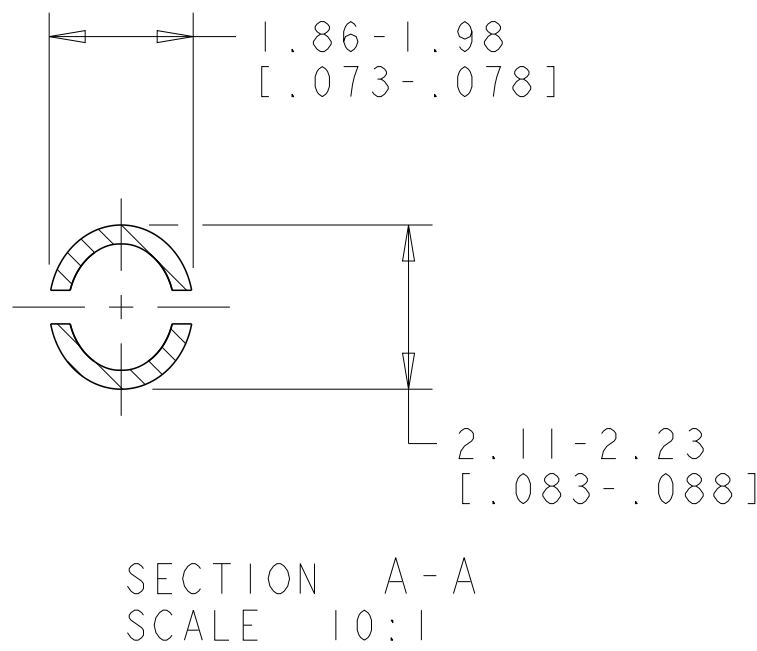
3 DIMENSIONAL MODEL
SCALE 4:1



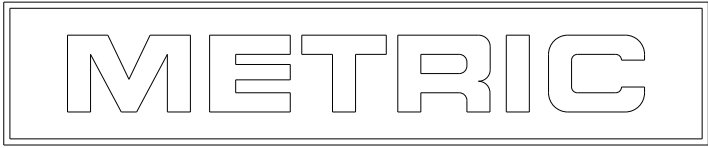
RECOMMENDED MOUNTING HOLE PATTERN
FOR 1.57 [0.062] THICK P.C. BOARD


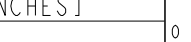


SECTION B-B



PHOSPOR BRONZE, GOLD 5	NYLON, UL94V-2, NATURAL	1586090-3
PHOSPOR BRONZE, GOLD 4	NYLON, UL94V-2, NATURAL	1586090-2
PHOSPOR BRONZE, PRE-TIN	NYLON, UL94V-2, NATURAL	1586090-1
PIN CONTACT MATERIAL AND FINISH	HOUSING MATERIAL AND COLOR	PART NUMBER



THIS DRAWING IS A CONTROLLED DOCUMENT.		DWN K. WHITAKER 24-MAR-2003	 TE Connectivity					
DIMENSIONS: mm[INCHES]		CHK S. RIDGILL 24-MAR-2003						
TOLERANCES UNLESS OTHERWISE SPECIFIED:		APVD S. RIDGILL 24-MAR-2003	NAME	PIN HEADER ASSEMBLY, POLARIZED, 6 CIRCUIT, UNIVERSAL MATE-N-LOK™				
0 PLC ± 1 PLC ± 2 PLC ± 3 PLC ± 4 PLC ± ANGLES FINISH		PRODUCT SPEC APPLICATION SPEC						
		WEIGHT	SIZE	CAGE CODE	DRAWING NO	RESTRICTED TO		
SEE TABLE		-	A1	100779	C=1586090	-		
CUSTOMER DRAWING		SCALE		5:1	SHEET	1 OF 1	REV	A1

Mouser Electronics

Authorized Distributor

Click to View Pricing, Inventory, Delivery & Lifecycle Information:

[TE Connectivity:](#)

[1586090-1](#)