

# CN Series

## Double Pole Power Rocker Switches

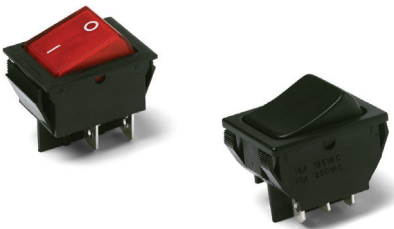
### Features/Benefits

- Illuminated versions available
- Multiple actuator and termination styles
- Robust design
- Custom version upon request
- RoHS compliant



### Typical Applications

- Appliances
- Office equipment
- Computers and peripherals
- Off-road vehicles
- Industrial machines
- HVAC units
- Transportation



### Specifications

#### CONTACT RATING:

See table for Q and QA ratings on the last page of this series.

ELECTRICAL LIFE: 10,000 make and break cycles at full load.

INSULATION RESISTANCE:  $10^8 \Omega$  min.

DIELECTRIC STRENGTH: 1,500 VRMS @ sea level.

OPERATING TEMPERATURE: -20°C to +85°C

HOUSING AND ACTUATOR: 6/6 nylon (UL94V-2), black, matte finish.

ILLUMINATED ACTUATOR: Polycarbonate, matte finish.

CENTER CONTACTS: Silver plated, copper alloy.

END CONTACTS: Silver plated  $\text{AgSuO}_2\text{InO}_3$ .

ALL TERMINALS: Silver plated, copper alloy.

**Note:** Specifications and materials listed above are for switches with standard options. For information on specific and custom switches, consult Customer Service Center.

### Materials

### Build-A-Switch

To order, simply select desired option from each category and place in the appropriate box. Available options are shown and described on pages G-99 through G-101. For additional options not shown in catalog, consult Customer Service Center.

<div>Switch Function</div> <div>CN201 DPDT On-None-On</div> <div>CN202 DPST On-None-Off</div> <div>CN22 * DPST On-None-Off</div>	<div>Actuator</div> <div>J1 Rocker</div> <div>J3 Illuminated rocker</div> <div>J6 Rocker</div> <div>J8 Illuminated rocker</div>	<div>Actuator Color</div> <div>2 Black</div> <div>1 White</div> <div>3 Red</div> <div>R Red, illuminated</div> <div>A Amber, illuminated</div> <div>G Green, illuminated</div>	<div>Mounting Style/Color</div> <div>S2 Snap-in, black</div> <div>S4 Snap-in, black</div> <div>S1 Snap-in, white</div> <div>S3 Snap-in, white</div>	<div>Termination</div> <div>15 .187" quick connect</div> <div>05 .250" quick connect</div>	<div>Actuator Marking</div> <div>(NONE) No marking</div> <div>D ON-OFF</div> <div>H "O I" - international ON-OFF</div> <div>P "O -" international ON-OFF</div>	<div>Contact Rating</div> <div>Q Silver</div> <div>QA Silver (with HP rating)</div>	<div>Lamp Rating</div> <div>(NONE) No lamp</div> <div>7 125 VAC neon</div> <div>8 250 VAC neon</div>
--	---	--	---	--	--	---	--

\* CN22 - for switches with both marking and illumination

Rocker



Dimensions are shown: Inches (mm)  
Specifications and dimensions subject to change

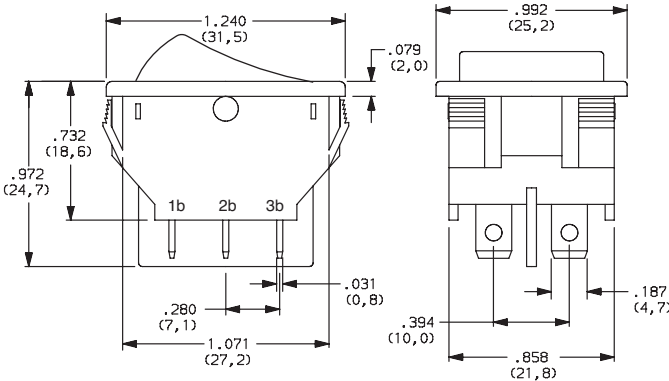


# CN Series Double Pole Power Rocker Switches

## SWITCH FUNCTION

NO. POLES	MODEL NO.	SWITCH FUNCTION			CONNECTED TERMINALS			SCHEMATIC
		Pos. 1	Pos. 2	Pos. 3	Pos. 1	Pos. 2	Pos. 3	
		C&K marking on opposite side			C&K marking on opposite side			
DP	CN201	ON	NONE	ON	2-1 4-5	N/A	2-3 6-5	
	CN202	ON	NONE	OFF			OPEN	
	CN22 *	ON	NONE	OFF				 For Illuminated Version

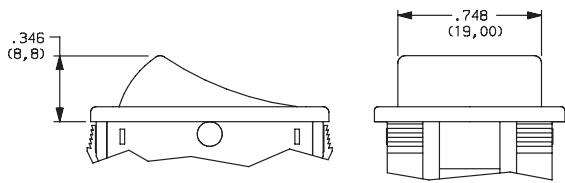
\* CN22 - for switches with both marking and illumination



Shown in Pos. 1

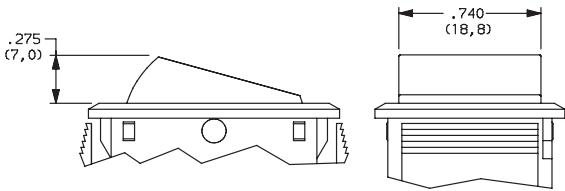
## ACTUATOR

- J1 ROCKER
- J3 ILLUMINATED ROCKER



**NOTE:** J1 & J3 actuators available with Q contact rating only.  
J3 actuator available with CN202 & CN22 switch function only.

- J6 ROCKER
- J8 ILLUMINATED ROCKER



**NOTE:** J6 & J8 actuators available with QA contact rating only.  
J6 actuator available with CN201 & CN202 switch functions,  
J8 actuator available with CN202 & CN22 switch function only.

Rocker



G



Dimensions are shown: Inches (mm)  
Specifications and dimensions subject to change

# CN Series Double Pole Power Rocker Switches

## ACTUATOR COLOR

OPTION CODE	ACTUATOR COLOR
<b>2</b>	BLACK
<b>1</b>	WHITE
<b>3</b>	RED
<b>R</b>	RED, ILLUMINATED
<b>A</b>	AMBER, ILLUMINATED
<b>G</b>	GREEN, ILLUMINATED

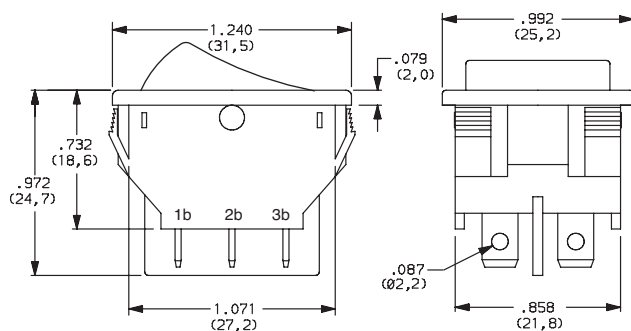
## MOUNTING STYLE/COLOR

**S2** SNAP-IN, BLACK

**S1** SNAP-IN, WHITE

**S4** SNAP-IN, BLACK

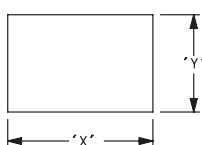
**S3** SNAP-IN, WHITE



**NOTE:** Available with 15 termination and Q contact rating only.

Shown in Pos. 1

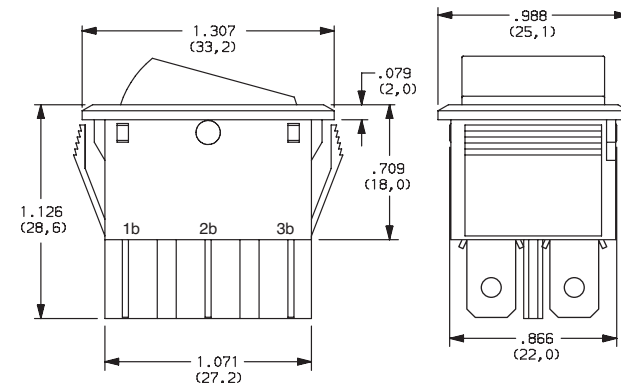
### PANEL MOUNTING



PANEL THICKNESS	"X"	"Y"
0.030-0.049 (0,75-1,25)	1.190-.004 (30,2-0,1)	0.874+.004 (22,2+0,1)
0.049-0.079 (1,25-2,0)	1.197-.004 (30,4-0,1)	0.874+.004 (22,2+0,1)
0.079-0.118 (2,0-3,0)	1.213-.004 (30,8-0,1)	0.874+.004 (22,2+0,1)

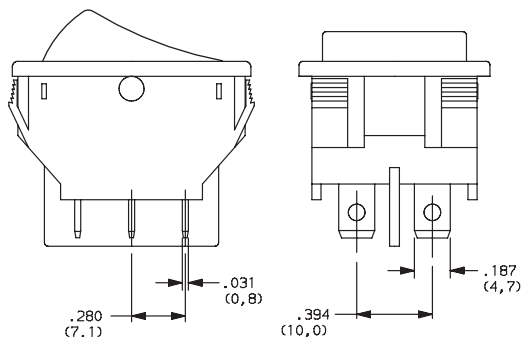
**NOTE:** Available with 05 termination and QA contact rating only.

Shown in Pos. 1



## TERMINATION

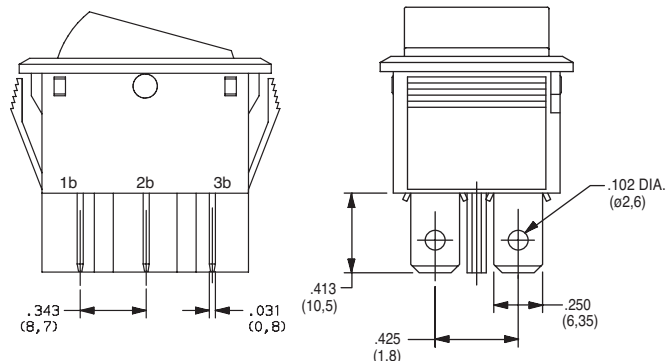
**15** .187" QUICK CONNECT



**NOTE:** Available with S1 & S2 mounting style and Q contact rating only.

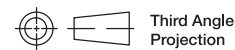
Shown in Pos. 1

**05** .250" QUICK CONNECT



**NOTE:** Available with S3 & S4 mounting styles and QA contact rating, CN201 & CN202 switch functions only.

Shown in Pos. 1



Third Angle Projection

Dimensions are shown: Inches (mm)  
Specifications and dimensions subject to change

**C&K**

# CN Series

## Double Pole Power Rocker Switches

### ACTUATOR MARKING

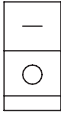
**NONE** NO MARKING



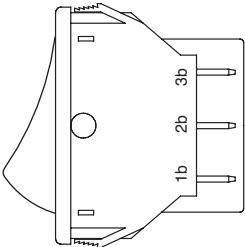
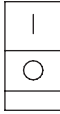
**D** ON-OFF



**H** O I



**P** O -



**NOTE:** Orientation of actuator marking and terminals.  
Shown in Pos. 1

### CONTACT MATERIAL

OPTION CODE	CONTACT AND TERMINAL MATERIAL	RATINGS	
<b>Q</b>	SILVER	POWER	16A @ 125C 1/3 HP @ 125 V AC 10A @ 250 V AC 1/2HP @ 250 V AC
<b>QA</b>			16A @ 125 VAC, 1/8 HP @ 125 V AC; 10 A @ 250 VAC, 1/3 HP @ 250 V AC

\* Note: See Technical Data section of this catalog for RoHS compliant and compatible definitions and specifications.



### LAMP RATING

**(NONE)** NO LAMP

**7** 125 VAC 33kΩ NEON

**8** 250 VAC 150kΩ NEON

**NOTE:** Lamp rating for J3 & J8 actuator options.



Dimensions are shown: Inches (mm)  
Specifications and dimensions subject to change

Rocker



G



# Mouser Electronics

Authorized Distributor

Click to View Pricing, Inventory, Delivery & Lifecycle Information:

## C&K Switches:

[CN201J12S215Q](#) [CN201J11S215Q](#) [CN201J11S115Q](#) [CN202J3GS215Q8](#) [CN202J12S215HQ](#) [CN202J3AS215Q8](#)  
[CN202J12S215Q](#) [CN202J11S215Q](#) [CN202J12S215PQ](#) [CN202J3AS215Q7](#) [CN202J3RS215Q7](#) [CN202J12S215DQ](#)  
[CN202J3RS215Q8](#) [CN202J11S215PQ](#) [CN202J3GS215Q7](#) [CN202J62S405QA](#) [CN22J8GS405PQA7](#)  
[CN22J8RS405PQA7](#) [CN201J62S405QA](#) [CN202J11S115PQ](#) [CN202J61S305PQA](#) [CN22J3RS215HQ8](#)  
[CN22J3RS215PQ8](#) [CN22J8AS405HQA8](#) [CN22J8GS305HQA7](#) [CN22J8GS305HQA8](#) [CN22J8GS405HQA8](#)  
[CN22J8GS405PQA8](#) [CN202J62S405PQA](#) [CN22J8GS405HQA7](#) [CN22J3AS215PQ8](#) [CN22J3GS215PQ8](#)  
[CN22J3RS215PQ7](#)