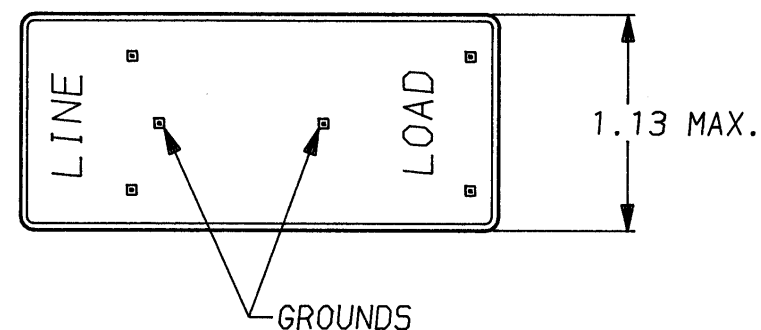
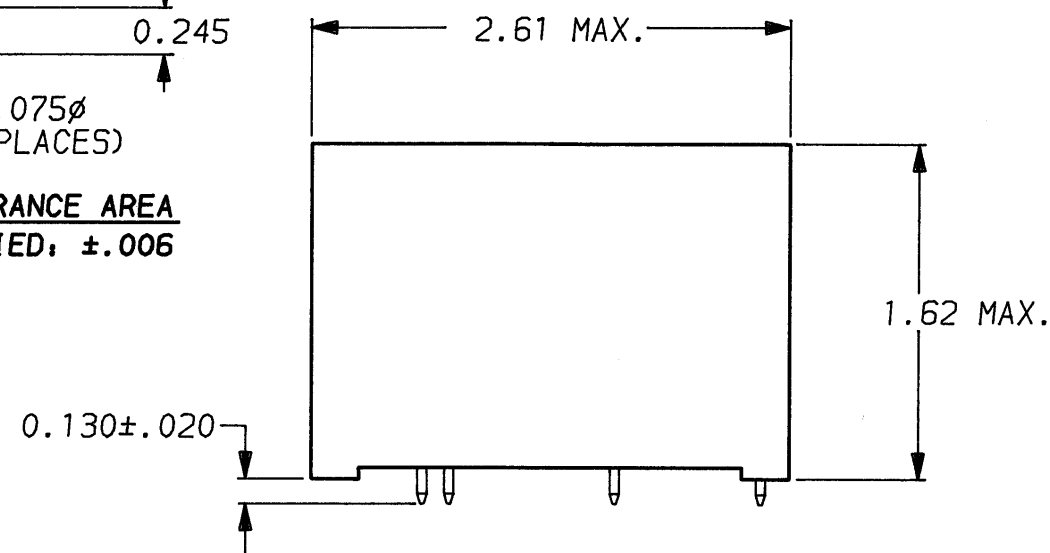
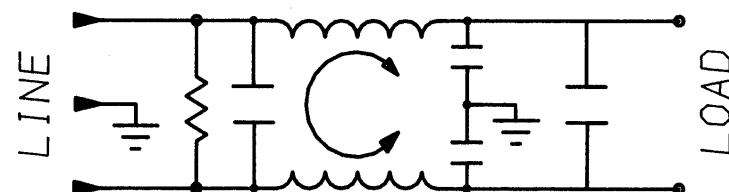


RECOMMENDED MOUNTING HOLES & CLEARANCE AREA  
TOLERANCE UNLESS OTHERWISE SPECIFIED:  $\pm 0.006$



PINS: .065 MAX. DIAGONAL  
(6 PLACES)



6609061-2  
1609061-2 OBSOLETE

⚠ OBSOLETE PARTS: OBSOLETE CIS STREAMLINING PER  
D.RENAUD/D.SINISI

50Ω - 50Ω (MINIMUM) INSERTION LOSS									
FREQUENCY MHz	.01	.05	.07	.15	.50	1	5	10	30
COMMON dB	8	21	24	31	49	44	40	40	40
DIFF. dB	—	10	19	40	70	75	70	60	55

This document is proprietary to CORCOM INC. and is not  
to be reproduced nor used for manufacturing purposes  
except on CORCOM's order or prior written consent.

TOLERANCE EXCEPT AS NOTED  
DECIMAL: .XXX .XX .X ANGLES  
ENGLISH:  $\pm .025$   $\pm 1^\circ$   
METRIC:  $\pm$  —  
MATERIAL: AS SUPPLIED

FINISH:

DESCRIPTION	APPROVED BY	DATE:	REV
	C. Westaby	7-10-90	2
ECO-09-026495	AEG	07DEC09	3

# SAFETY ORGANIZATION(S):

THIS FILTER HAS BEEN FORMALLY RECOGNIZED, CERTIFIED OR APPROVED  
BY THE LISTED AGENCY. THEREFORE, ALL TEST/REQUIREMENTS SPECIFIED  
IN THE LATEST REVISION OF THE FOLLOWING AGENCY STANDARDS  
HAVE BEEN MET:

UL RECOGNIZED  
CSA CERTIFIED  
VDE APPROVED

UL 1283  
CSA 22.2, NO.0,0.4,8  
VDE 565-3

## OPERATING SPECIFICATIONS:

LINE VOLTAGE/CURRENT:

2 AMP., 120/250 VAC  
1.5 AMP./40°C. 250 VAC

LINE FREQUENCY:

50-60Hz

MAX. LEAKAGE CURRENT, EACH

.3mA @ 120V 60Hz

LINE TO GROUND

.5mA @ 250V 50Hz

OPERATING AMBIENT TEMP. RANGE:

-10°C TO +60°C @ RATED CURRENT,  $I_r$

IN AN AMBIENT,  $T_a$ , HIGHER THAN 60°C, THE MAXIMUM OPERATING  
CURRENT,  $I_o$ , IS AS FOLLOWS:

$$I_o = I_r \sqrt{\frac{85 - T_a}{25}}$$

## RELIABILITY SPECIFICATIONS:

STORAGE TEMPERATURE:

-40°C TO +85°C

HUMIDITY:

21 DAYS @ 40°C 95% RH

CURRENT OVERLOAD TEST:

6 TIMES RATED CURRENT FOR 8 SECONDS

## TEST SPECIFICATIONS:

INDUCTANCE:

5.7mH NOMINAL

CAPACITANCE: (MEASURED @ 1 KHz, 0.25 VAC MAX., 25°C  $\pm 1^\circ$ )

LINE TO GROUND:

8000pF  $\pm 20\%$

LINE TO LINE:

0.37μF  $\pm 20\%$

DISCHARGE RESISTOR:

820 KΩ

LINE/GROUND AND LINE/LINE

6000 MΩ (MIN) AT 100 VDC

INSULATION RESISTANCE

20°C AND 50% RH

(WITHOUT DISCHARGE RESISTOR)

## RECOMMENDED RECEIVING INSPECTION HIPOT:

LINE TO GROUND:

2250 VDC FOR 1 MINUTE

LINE TO LINE:

1450 VDC FOR 1 MINUTE

## FILTER APPROVAL:

THE BEST WAY TO SELECT AND QUALIFY A FILTER IS FOR YOUR ENGINEERING  
TO TEST THE UNIT IN YOUR EQUIPMENT.

**corcom**  
LIBERTYVILLE, IL 60048

POWER LINE FILTER

SCALE	DATE	DRG. NO.	REV.
NTS	2-8-87	2EYP.	03
DRW. BY LJD	ORIGINATOR CFW		

# Mouser Electronics

Authorized Distributor

Click to View Pricing, Inventory, Delivery & Lifecycle Information:

[TE Connectivity:](#)

[2EYP](#)