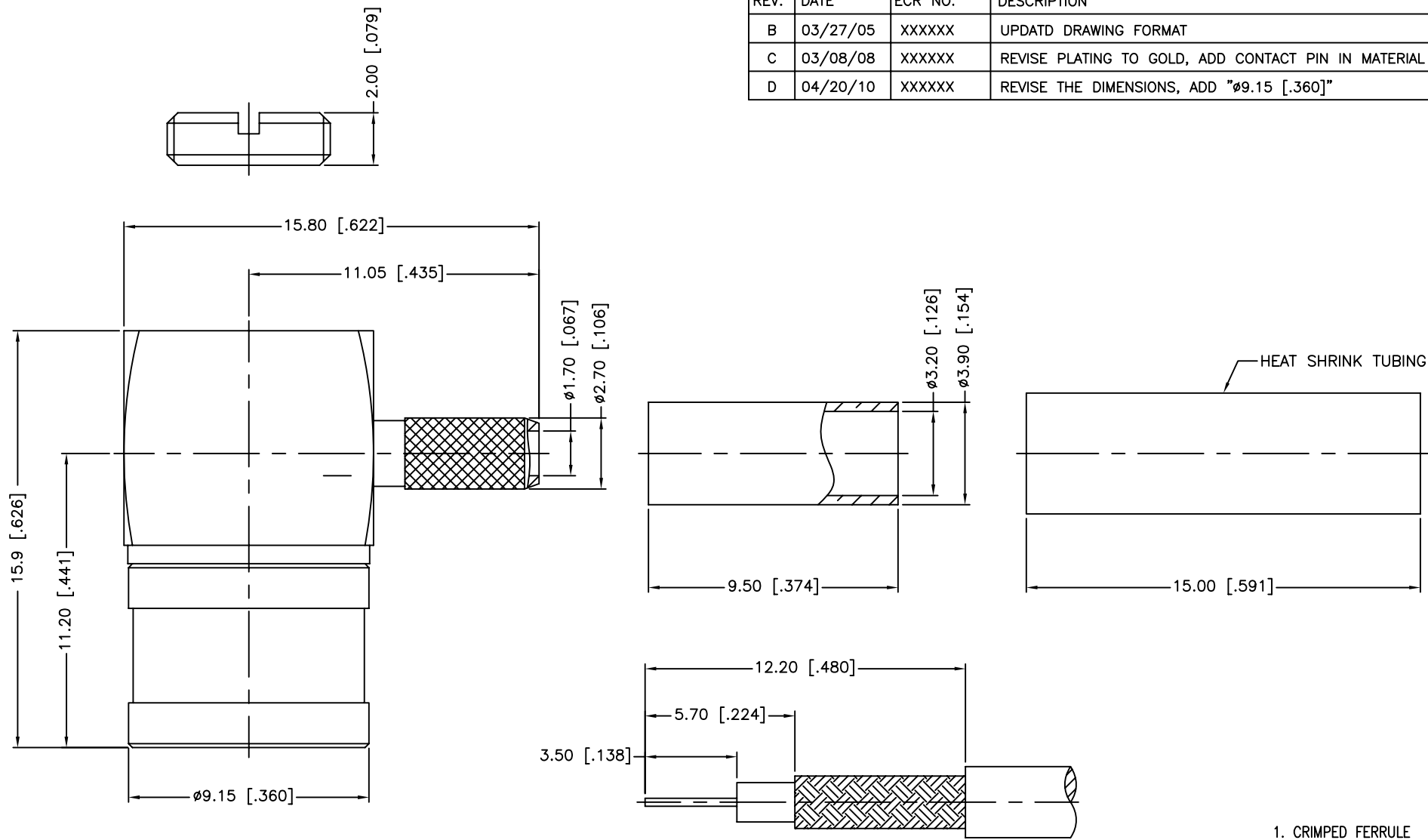


REV.	DATE	ECR NO.	DESCRIPTION
B	03/27/05	XXXXXX	UPDATD DRAWING FORMAT
C	03/08/08	XXXXXX	REVISE PLATING TO GOLD, ADD CONTACT PIN IN MATERIAL CALLOUT
D	04/20/10	XXXXXX	REVISE THE DIMENSIONS, ADD "ø9.15 [.360]"



RECOMMENDED  
CABLE STRIPPING DIM'S

1. CRIMPED FERRULE  
HEX CRIMP SIZE .128"
2. CONTACT PIN TO SOLDER

DESCRIPTION	MATERIAL	FINISH	QTY	DO NOT SCALE DRAWING	APPROVALS	DATE	PART DESCRIPTION			
9	HEAT SHRINK TUBING		BLACK	1			<h1 style="text-align: center;">Amphenol Connex</h1> <p style="text-align: center;"><b>SMB R/A CRIMP PLUG (FOR RG-179/U, 187A/U - 75 OHM)</b></p>			
8	FERRULE	BRASS	GOLD	1						
7	NUT	BRASS	GOLD	1						
6	RETAINER RING	BURYLLIUM COPPER	NATURAL	1						
5	CONTACT PIN	BURYLLIUM COPPER	GOLD	1						
4	INSULATOR	PTFE	NATURAL	1						
3	BARREL	BRASS	GOLD	1						
2	BODY	BRASS	GOLD	1						
1	SHELL	BRASS	GOLD	1						
					UNLESS OTHERWISE SPECIFIED DIMENSIONS ARE IN MILLIMETERS. DIMENSIONS IN [ ] ARE IN INCHES AND FOR CUSTOMER REFERENCE ONLY.	DRAWN	M.ZHANG	04/20/10	PART NO.	142115
					UNLESS OTHERWISE SPECIFIED TOLERANCES FOR MILLIMETERS ARE: 0.5 - 8mm ± 0.20mm 8 - 30mm ± 0.40mm 30 - 120mm ± 0.50mm	CHECKED			DWG. NO.	142115.DWG
					UNLESS OTHERWISE SPECIFIED TOLERANCES FOR INCHES ARE: .020 - .315 ± 0.007" .315 - 1.180 ± 0.015" 1.180 - 4.724 ± 0.020"	ISSUED			REV.	D
					RECOMMENDED CABLE STRIPPING DIM'S	SHEET	1 OF 1		SIZE	A
					DO NOT SCALE DRAWING	CAD FILE	C:/CONNEX/142115.DWG		SCALE	NA

# Mouser Electronics

Authorized Distributor

Click to View Pricing, Inventory, Delivery & Lifecycle Information:

[Amphenol:](#)

[142115](#)