

100

BB-CD-805-02

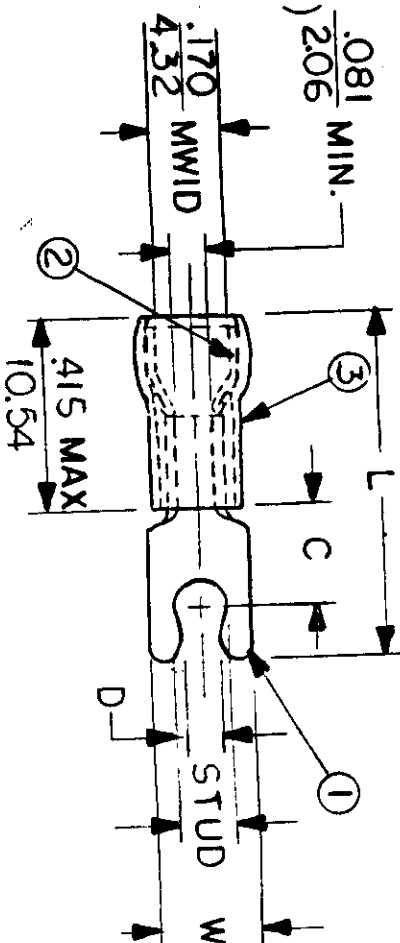
- MIN**  
.081  
2.06

STUD SIZES: ( $\alpha=.005$ )

02 =	.094
04 =	.119
06 =	.146
08 =	.173
10 =	.198
14 =	.265
56 =	.328
38 =	.390

"UL" LISTING #E32244  
"CSA" LISTING #18689

WIRE SIZE: 16 - 14 AWG  
1.0 - 2.5 MM<sup>2</sup>



ALL DIMENSIONS =  $\frac{\text{INCHES}}{\text{MM}}$  (MWID) = DENOTES MAXIMUM WIRE INSULATION DIAMETER

PART NUMBER	"W" ±.010	"C" MIN.	"L" MAX.	"D" ±.005	AVAILABLE STUD SIZES
BB-8707	$\frac{.250}{6.35}$	$\frac{.230}{5.84}$	$\frac{.825}{20.96}$	$\frac{1.05}{2.67}$	05 ( $\frac{.127 \pm .005}{3.23}$ )
BB-8707-	$\frac{.250}{6.35}$	$\frac{.230}{5.84}$	$\frac{.825}{20.96}$	$\frac{.114}{2.90}$	06

[illegible]

# Mouser Electronics

Authorized Distributor

Click to View Pricing, Inventory, Delivery & Lifecycle Information:

Molex:

19115-0090