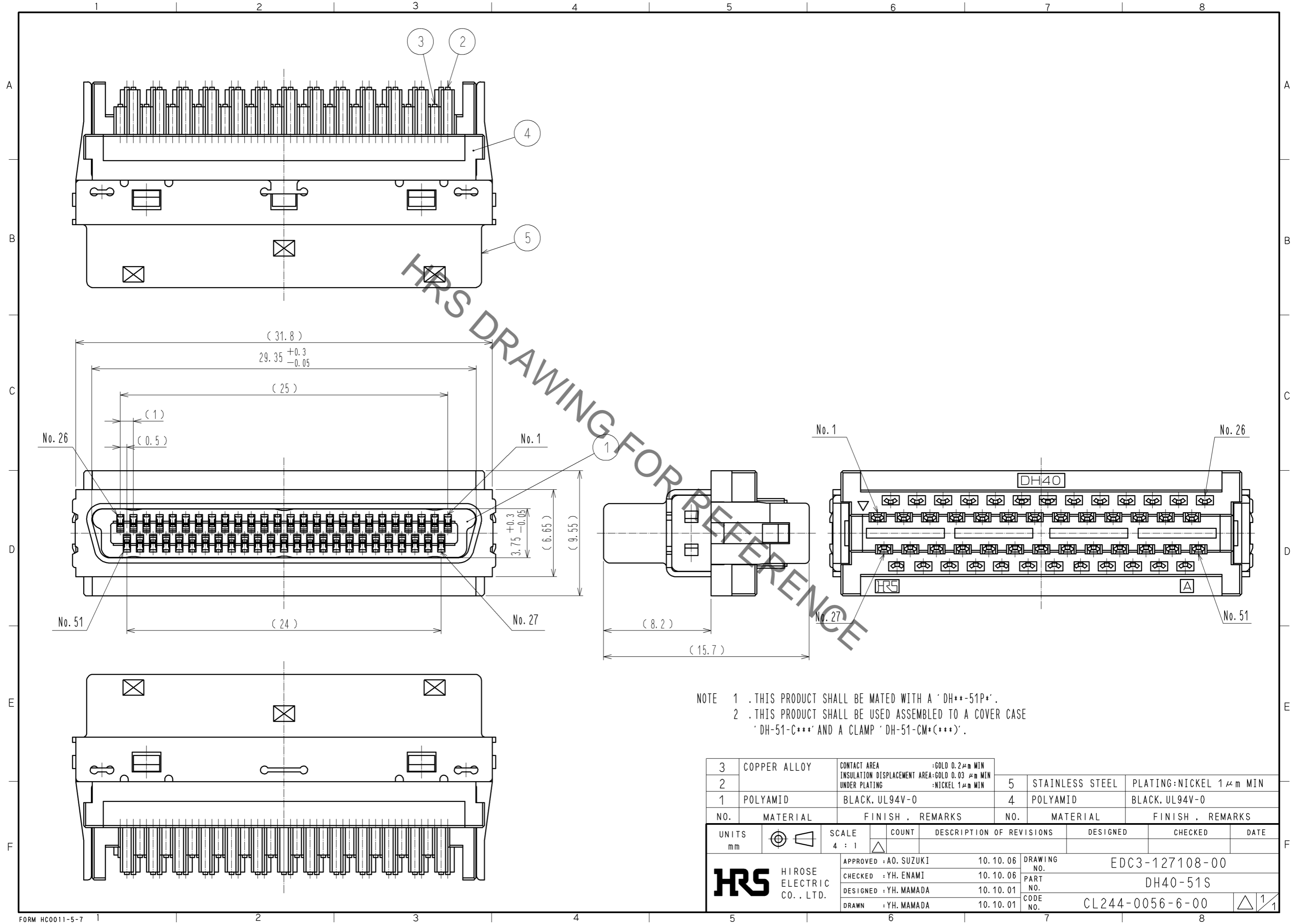


Sep.1.2020 Copyright 2020 HIROSE ELECTRIC CO., LTD. All Rights Reserved.  
 In case of consideration for using Automotive equipment / device which demand high reliability, kindly contact our sales window correspondents.



NOTE 1 . THIS PRODUCT SHALL BE MATED WITH A 'DH\*\*-51P\*'.  
 2 . THIS PRODUCT SHALL BE USED ASSEMBLED TO A COVER CASE 'DH-51-C\*\*\*' AND A CLAMP 'DH-51-CM\*(\*\*\*)'.

3	COPPER ALLOY	CONTACT AREA :GOLD 0.2μm MIN INSULATION DISPLACEMENT AREA:GOLD 0.03 μm MIN UNDER PLATING :NICKEL 1μm MIN	5	STAINLESS STEEL	PLATING:NICKEL 1μm MIN
2			4	POLYAMID	BLACK, UL94V-0
1	POLYAMID	BLACK, UL94V-0			
NO.	MATERIAL	FINISH . REMARKS	NO.	MATERIAL	FINISH . REMARKS
UNITS mm		SCALE 4 : 1	COUNT △	DESCRIPTION OF REVISIONS	
DESIGNED		CHECKED		DATE	
APPROVED : A0. SUZUKI		10.10.06		DRAWING NO. EDC3-127108-00	
CHECKED : YH. ENAMI		10.10.06		PART NO. DH40-51S	
DESIGNED : YH. MAMADA		10.10.01		CODE NO. CL244-0056-6-00	
DRAWN : YH. MAMADA		10.10.01		△ 1/1	