

4

3

2

1

THIS DRAWING IS UNPUBLISHED.

RELEASED FOR PUBLICATION

© COPYRIGHT

ALL RIGHTS RESERVED.

LOC


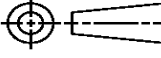
DIST

REVISIONS

P	LTR	DESCRIPTION	DATE	DWN	APVD
	F1	ECR-16-002691	2MAR2016	RS	UG

THIS PART NUMBER IS OBSOLETE (NO LONGER ACTIVE OR PRODUCED).  
THE CUSTOMER SHOULD CONTACT THEIR SALES REPRESENTATIVE OR TAC  
TO IDENTIFY THE APPLICATOR THAT WILL PROCESS THE TERMINAL TO BE APPLIED.  
IF ONE DOES NOT EXIST, A REQUEST TO QUOTE A NEW APPLICATOR WILL NEED TO  
BE PROCESSED.

FOR REPLACEMENT PARTS FOR APPLICATOR 680516  
REFER TO ADDITIONAL PAGE(S). SPARE PARTS KIT (IF LISTED)  
WILL REMAIN AVAILABLE.

THIS DRAWING IS A CONTROLLED DOCUMENT.		DWN R.SHEN		 TE Connectivity			
DIMENSIONS:		CHK LJ.ZHANG					
		APVD U.GUO		NAME SIDE FEED HDM APPLICATOR			
		PRODUCT SPEC					
		APPLICATION SPEC					
MATERIAL		WEIGHT		SIZE A3	CAGE CODE	DRAWING NO C- 680516	RESTRICTED TO
FINISH		CUSTOMER ACCESSIBLE PRODUCTION DRAWING		SCALE	SHEET 1 OF 3	REV F1	

THIS INFORMATION IS CONFIDENTIAL AND PROPRIETARY TO TYCO ELECTRONICS CORPORATION AND ITS WORLDWIDE SUBSIDIARIES AND AFFILIATES. IT MAY NOT BE DISCLOSED TO ANYONE, OTHER THAN TYCO ELECTRONICS PERSONNEL, WITHOUT WRITTEN AUTHORIZATION FROM TYCO ELECTRONICS CORPORATION.

04NOV2009 1:53pm

PART NUMBER	REV	FIRST USED	TERMINATOR	FEED	CARRIER STRIP
680516-1	F	122500-1	LEADMAKER	MECH POST FEED	CUT
680516-2	F	565435-5	BENCH MODEL K	MECH PRE FEED	CUT
680516-3	F	354500-1	BENCH MODEL G	MECH PRE FEED	CUT
680516-4	F	122500-1	LEADMAKER	MECH POST FEED	NO CUT
680516-5	F	565435-5	BENCH MODEL K	MECH PRE FEED	NO CUT
680516-6	F	354500-1	BENCH MODEL G	MECH PRE FEED	NO CUT

TERMINAL NAME: TERMINAL, MALE, METRI PACK									
AMP		MFR		CRIMPING DATA					
286618		12034047		PAD LTR		CRIMP HEIGHT		WIRE SIZE	
286804		12020119				A .059 ±.002 [1.50 ±.05mm]		1.00mm <sup>2</sup>	
						B .049 ±.002 [1.25 ±.05mm]		0.8 OR 0.5mm <sup>2</sup>	
						C NOT		USED	
						D NOT		USED	
				CRIMP		SIZE		TYPE	
				WIRE		.090 [2.29mm]		F	
				INSUL		.130 [3.30mm]		F	
								Ø.079-.106	
WIRE STRIP LENGTH		TERM APPL		SPEC		FED. 490		APPL INSTRUCTION	
.219-.250		NONE		△.625		408-8040		SET UP GAGE	
								LAYOUT	
								L1977	


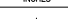
[illegible]

REF	REF	REF	REF	REF	REF	—	22594-8	NUT, HEX (1/2-20)	70
REF	REF	REF	REF	REF	REF	—	240628-1	PLATE, ADJUSTMENT	69
REF	REF	REF	REF	REF	REF	—	240626-1	SHAFT, PIVOT	68
REF	REF	REF	REF	REF	REF	—	240633-1	BUSHING	67
REF	REF	REF	REF	REF	REF	—	455680-1	LEVER, INTERMEDIATE	66
REF	REF	REF	REF	REF	REF	—	240629-1	BLOCK, PIVOT	65
REF	REF	REF	REF	REF	REF	—	240632-2	SCREW, ADJ FEED ROD	64
REF	REF	REF	REF	REF	REF	—	240659-3	PIN, CAM ROLLER	63
REF	REF	REF	REF	REF	REF	—	240658-1	ROLLER, CAM	62
REF	REF	REF	REF	REF	REF	—	454398-2	ROD, FEED	61
REF	REF	REF	REF	REF	REF	—	454178-1	GUIDE, FEED ROD	60
REF	REF	REF	REF	REF	REF	—	454220-1	CAP, RAM	59
REF	REF	REF	REF	REF	REF	—	454485-1	HOUSING	58

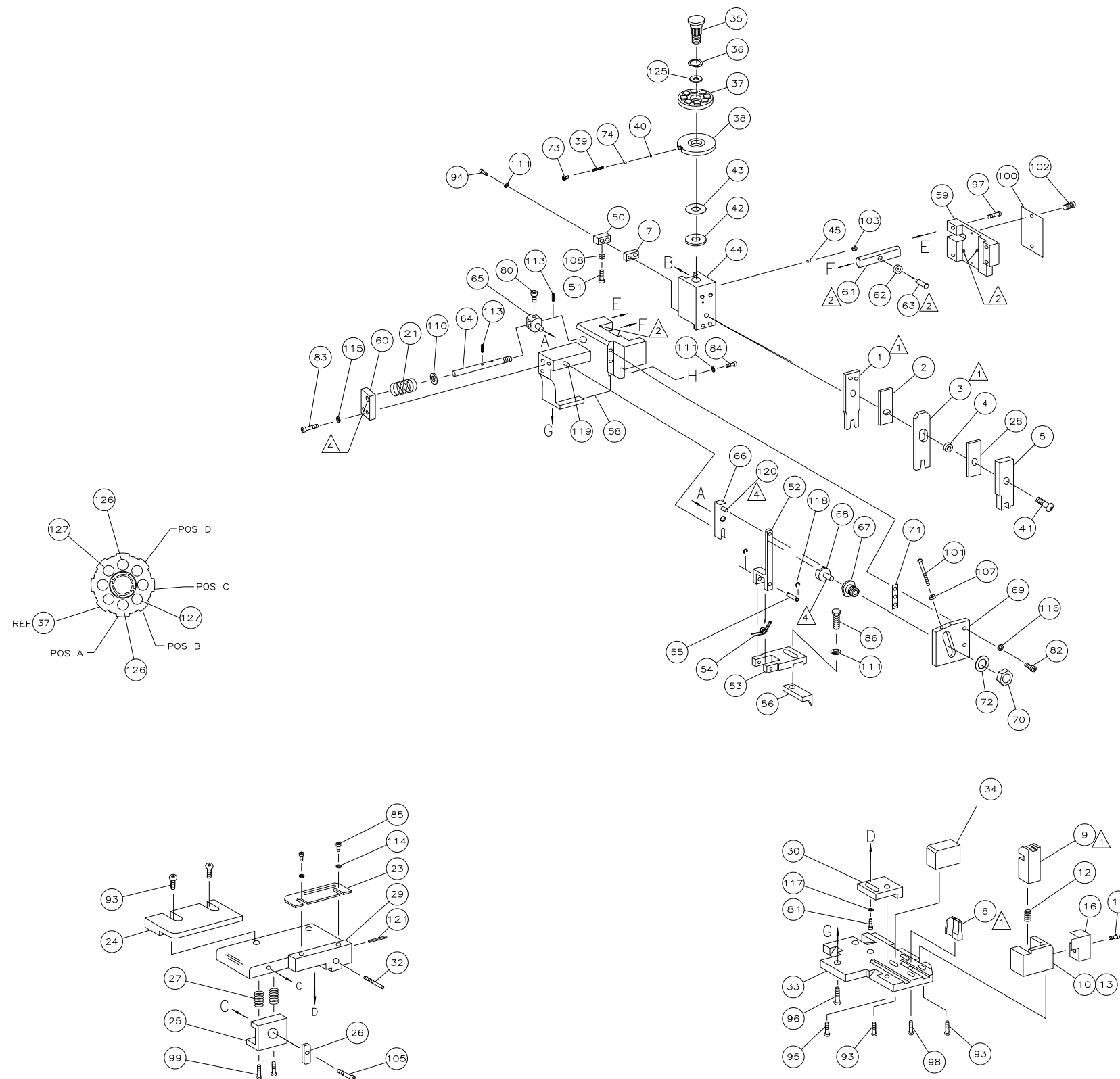
1	1	1	1	1	1	—	458537-2	PAWL, FEED	56
REF	REF	REF	REF	REF	REF	—	240624-1	PIN, FEED FINGER	55
REF	REF	REF	REF	REF	REF	—	691499-1	SPRING, FEED FINGER	54
REF	REF	REF	REF	REF	REF	—	690541-1	HOLDER, FEED FINGER	53
REF	REF	REF	REF	REF	REF	—	455679-2	LEVER, TERMINAL FEED ARM	52
1	1	1	1	1	1	—	811242-2	BUMPER, HOLDDOWN	51
1	1	1	1	1	1	—	690753-1	SPACER, TONKER	50
1	—	—	1	—	—	—	690602-6	CAM, PRE-FEED 1 5/8 ST	49
—	1	—	—	1	—	—	690602-5	CAM, PRE-FEED 1 1/8 ST	48
—	—	1	—	—	1	—	690501-4	CAM, POST-FEED 1 5/8 ST	47
1	1	1	1	1	1	—	459456-2	APPLICATOR, BASIC (SUBASSY)	46
1	1	1	1	1	1	—	690191-1	PLUG, NYLON	45
1	1	1	1	1	1	—	455673-1	RAM	44
1	1	1	1	1	1	—	690125-1	WASHER, LAMINATED	43
1	1	1	1	1	1	—	690124-1	WASHER, RAM	42
1	1	1	1	1	1	—	690686-1	BOLT, CRIMPER(5/16x1.00)	41
1	1	1	1	1	1	—	23241-6	BALL, STEEL	40
1	1	1	1	1	1	—	690170-1	SPRING, COMPRESSION	39
1	1	1	1	1	1	—	690142-1	DISC, INSULATION	38
1	1	1	1	1	1	—	354777-1	WIRE DISC, PLASTIC	37
1	1	1	1	1	1	—	22480-5	WASHER, SPRING	36
1	1	1	1	1	1	—	690212-1	POST, RAM	35
1	1	1	1	1	1	—	690786-5	SUPPORT, TERMINAL	34
REF	REF	REF	REF	REF	REF	—	455675-1	PLATE, BASE	33
1	1	1	1	1	1	—	690432-3	SCREW, ADJUSTMENT	32




REF	REF	REF	REF	REF	REF	—			
1	1	1	1	1	1	—	455689-1	BLOCK, STRIP GUIDE ADJ	30
1	1	1	1	1	1	—	3-458144-3	PLATE, STRIP GUIDE	29
1	1	1	1	1	1	—	1-455888-5	SPACER, FRONT SHEAR DEP	28
2	2	2	2	2	2	—	1-22284-0	SPRING, DRAG	27
1	1	1	1	1	1	—	240793-1	LEVER, DRAG RELEASE	26
1	1	1	1	1	1	—	240792-1	DRAG, TERMINAL	25
1	1	1	1	1	1	—	6-690504-1	GUIDE, STRIP (REAR)	24
1	1	1	1	1	1	—	690438-1	GUIDE, STRIP (FRONT)	23
—	—	1	—	—	1	—	690472-2	STRIPPER	22
REF	REF	REF	REF	REF	REF	—	4-22284-9	SPRING, FEED RETURN	21
1	1	—	1	1	—	—	679218-1	STRIPPER WIRE STOP ASSY	20
1	1	—	1	1	—	—	458949-1	STRIPPER	19

										18
1	1	1	1	1	1	—	318563-1	GUARD, CHIP, FRONT		17
										16
										15
										14
1	1	1	—	—	—	—	679625-1	HOLDER, SHEAR NO-CUT		13
1	1	1	1	1	1	—	3-22280-3	SPRING, SHEAR		12
1	1	1	1	1	1	—	690461-1	STOP, SHEAR		11
—	—	—	1	1	1	—	690459-1	HOLDER, SHEAR (FRONT)		10
1	1	1	1	1	1	—	1-454276-9	SHEAR, FLOAT (FRONT)		9
1	1	1	1	1	1	—	1-662187-5	ANVIL		8
1	1	1	1	1	1	—	240641-2	SPACER, DEPRESSOR (REAR)		7
										6
1	1	1	1	1	1	—	1-455889-4	DEPRESSOR, SHEAR (FRONT)		5
1	1	1	1	1	1	—	238011-2	SPACER, BLOCK CRIMPER		4
1	1	1	1	1	1	—	8-456134-0	CRIMPER, INSULATION		3
1	1	1	1	1	1	—	1-455888-5	SPACER, CRIMPER		2
1	1	1	1	1	1	—	1-456406-6	CRIMPER, WIRE		1

										QTY REQD PER ASSY										PARTS LIST																																																	
										DIN 184UG97										MATERIAL -										HEAT TREAT -																																							
										L.COLLINS										03AUG97										CRK																																							
										C.ERISMAN										03AUG97										 TE Connectivity Harrisburg, PA 17105-3608																																							
										APVD										03AUG97																																																	
										T.LBLIN																																																											
										NAME										SIDE FEED HDM APPLICATOR																																																	
08-2012										XZ										TE																																																	
DATE										DIN										APVD										SURFACE TEXTURE																																							
																				TOLERANCES UNLESS OTHERWISE SPECIFIED: 0 P.L.C. ± 1 P.L.C. ± 2 P.L.C. ± 3 P.L.C. ± 4 P.L.C. ±																																																	
																				SCALE 1:1										SIZE A1										DRAWING NO 680516										SHEET 1 of 2										REV F									
CUSTOMER ACCESSIBLE PRODUCTION DRAWING																																																																					

DRAWING NUMBER - 680516 SHEET 2 OF 3 REV. F1



										DWN		19AUG97		MATERIAL		HEAT TREAT			
										L COLLINS		30AUG97		-		-			
										DNE		30AUG97		 TE Connectivity Harrisburg, PA 17105-3608					
										C.ERISMAN									
										APVD		30AUG97							
										T.ELBIN									
										WAVE		SIDE FEED HDM APPLICATOR							
DIMENSIONS: INCHES										TOLERANCES UNLESS OTHERWISE SPECIFIED: 0 PLC ± . 1 PLC ± . 2 PLC ± . 3 PLC ± . 4 PLC ± .									
																			
ANGLES±										-									
SURFACE TEXTURE																			
P LTR										REVISION RECORD		DATE		DWN		APVD			
SEE SHEET 1																			
3										CUSTOMER ACCESSIBLE PRODUCTION DRAWING									

# Mouser Electronics

Authorized Distributor

Click to View Pricing, Inventory, Delivery & Lifecycle Information:

[TE Connectivity:](#)

[680516-3](#)