

Fuseholders

For Micro™ Fuse or Pico® II Fuses

“Push-On” Retaining Nut Chassis Mount Type

QPL

Fuseholder will accept Littelfuse MICRO™ fuses and PICO® II fuses (rated to 5 amperes) with .025" diameter leads.

SPECIFICATIONS:

Electrical: Rated at 5 amperes for any voltage up to 125 volts.

Mounting: Maximum panel thickness is .09".

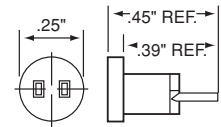
Molded Parts: Black Thermoset.

Terminals: Beryllium Copper, Silver-plated.

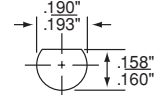
Ambient Temperature: -40°C to +125°C.

Hardware: “Push-On” retaining nut.

* Please refer to Fuseology section for information on proper fuseholder de-rating.



MOUNTING HOLE



FOR MICRO™ FUSE OR PICO® II FUSES

Vertical/Horizontal

P.C. Board Mount Type



Fuseholder will accept Littelfuse MICRO™ fuses and PICO® II fuses (rated to 5 amperes) with .025" diameter leads.

SPECIFICATIONS:

Electrical: Rated at 5 amperes for any voltage up to 125 volts.

Molded Parts: White Thermoplastic.

Terminals: Copper Alloy.

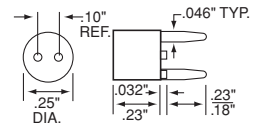
Ambient Temperature: -40°C to +100°C.

ORDERING INFORMATION:

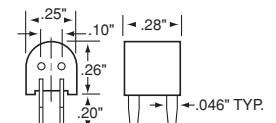
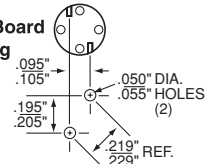
Catalog Number	Terminal Plating	Mounting
281 005	Silver ¹	Vertical
281 008	Tin	Vertical
281 007	Silver ¹	Horizontal
281 010	Tin	Horizontal

¹ UL Recognized.

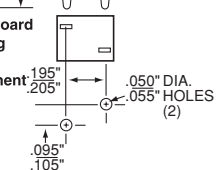
* Please refer to Fuseology section for information on proper fuseholder de-rating.



Circuit Board Mounting Detail



Circuit Board Mounting Detail (Component Side)



For LT-5™ and TR5® Fuses

P.C. Board Mount Type

Fuse holder will accept Littelfuse LT-5™ and TR5® fuses up to 5 amperes.

SPECIFICATIONS:

Electrical: Rated at 5 amperes for any voltage up to 250 volts.

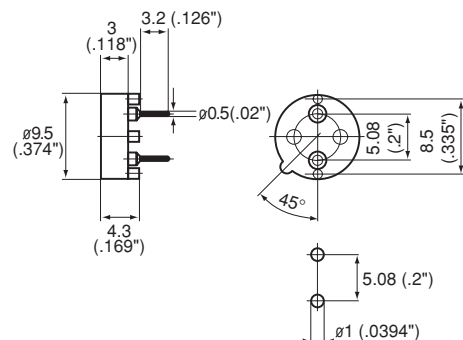
Molded Parts: Black Thermoplastic (UL94 V-O).

Terminals: Tin-plated brass, gold inside.

ORDERING INFORMATION:

Catalog Number: 02800050

* Please refer to Fuseology section for information on proper fuseholder de-rating.



13

FUSEHOLDERS

Mouser Electronics

Authorized Distributor

Click to View Pricing, Inventory, Delivery & Lifecycle Information:

Littelfuse:

[281005](#) [281007](#) [281008](#) [281001](#)