

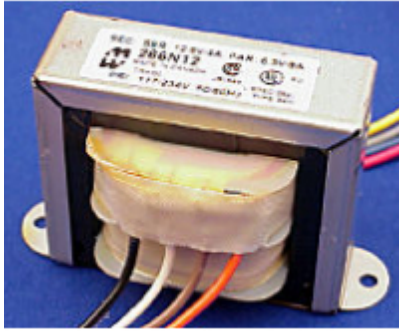


Quality Products. Service Excellence.

Low Voltage/Filament, Dual Primary & Secondary 266 Series

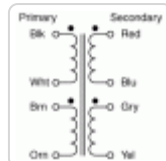
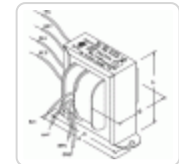
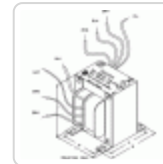
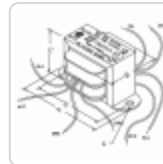
Open Style, Chassis Mount - 117/234 V Primary

Features



- Primary 117/234 VAC, 50/60 Hz.
- All units have dual secondaries except 266LA25 (C.T. secondary only). If you only require a single primary & secondary check out our more economical **166 Series**.
- Secondaries can be used as; a center tapped secondary, parallel connected or used individually (except **266LA25**).
- Units are designed for use with all windings engaged.
- Open style.
- Minimum 6" long leads.
- Dual bobbin design - no electrostatic shield required.
- We use Class B insulation (130 degrees, C) for extra protection - UL listed as a Class A (105 degree, C) design
- Hi-Pot test of 2,000V RMS.
- UL listed (# E207860) Type 3AH
- CSA certified (209651)

Gallery



| Part No. | VA | Secondary VAC (R.M.S.) | | Mounting Style | Dimensions | | | | | Mounting Hole | | Weight (Lbs) |
|----------|------|------------------------|--------------|----------------|------------|------|------|------|------|---------------|-------|--------------|
| | | Series (C.T.) | Parallel | | A | B | C | D | E | Height | Width | |
| 266M2 | 7.5 | 2.5V @ 3A | 1.25V @ 6A | A | 2.82 | 1.69 | 1.69 | 2.38 | - | | 0.19 | 0.76 |
| 266M5 | 15 | 5V @ 3A | 2.5V @ 6A | A | 3.25 | 2.06 | 2.00 | 2.81 | - | | 0.19 | 1.06 |
| 266F6 | 1.89 | 6.3V @ 0.3A | 3.15V @ 0.6A | A | 2.06 | 1.38 | 1.25 | 1.75 | - | | 0.19 | 0.2 |
| 266GB6 | 3.78 | 6.3V @ 0.6A | 3.15V @ 1.2A | A | 2.38 | 1.48 | 1.43 | 2.00 | - | | 0.19 | 0.4 |
| 266J6 | 6.3 | 6.3V @ 1A | 3.15V @ 2A | A | 2.82 | 1.60 | 1.69 | 2.38 | - | | 0.19 | 0.7 |
| 266JB6 | 7.6 | 6.3V @ 1.2A | 3.15V @ 2.4A | A | 2.82 | 1.69 | 1.69 | 2.38 | - | | 0.19 | 0.7 |
| 266L6 | 12.6 | 6.3V @ 2A | 3.15V @ 4A | A | 3.25 | 2.06 | 2.00 | 2.81 | - | | 0.19 | 0.87 |
| 266M6 | 18.9 | 6.3V @ 3A | 3.15V @ 6A | A | 3.25 | 2.06 | 2.00 | 2.81 | - | | 0.19 | 1.15 |
| 266PA6 | 37.8 | 6.3V @ 6A | 3.15V @ 12A | A | 4.00 | 2.25 | 2.62 | 3.56 | - | | 0.19 | 1.04 |
| 266S6 | 63 | 6.3V @ 10A | 3.15V @ 20A | A | 4.00 | 2.47 | 2.62 | 3.56 | - | | 0.19 | 2.6 |
| 266V6B | 126 | 6.3V @ 20A | 3.15V @ 40A | B | 3.13 | 3.56 | 3.81 | 2.50 | 3.00 | 0.20 | 0.38 | 6.4 |
| 266G9 | 4.5 | 9V @ 0.5A | 4.5V @ 1A | A | 2.38 | 1.48 | 1.43 | 2.00 | - | | 0.19 | 0.4 |
| 266E12 | 1.8 | 12V @ 0.15A | 6V @ 0.3A | A | 2.06 | 1.22 | 1.25 | 1.75 | - | | 0.19 | 0.28 |
| 266F12B | 3.6 | 12V @ 0.3A | 6V @ 0.6A | A | 2.38 | 1.48 | 1.43 | 2.00 | - | | 0.19 | 0.4 |

| Part No. | VA | Secondary VAC (R.M.S.) | | Mounting Style | Dimensions | | | | | Mounting Hole | | Weight (Lbs) |
|----------|-------|------------------------|--------------|----------------|------------|------|------|------|------|---------------|-------|--------------|
| | | Series (C.T.) | Parallel | | A | B | C | D | E | Height | Width | |
| 266F12C | 4.2 | 12V @ 0.35A | 6V @ 0.7A | A | 2.38 | 1.48 | 1.43 | 2.00 | - | | 0.19 | 0.4 |
| 266GD12 | 8.4 | 12V @ 0.7A | 6V @ 1.4A | A | 2.82 | 1.69 | 1.69 | 2.38 | - | | 0.19 | 0.76 |
| 266JA12 | 12 | 12V @ 1A | 6V @ 2A | V | 2.88 | 1.73 | 2.37 | 2.38 | - | | 0.19 | 1 |
| 266JB12 | 14.4 | 12V @ 1.2A | 6V @ 2.4A | A | 3.25 | 2.06 | 2.00 | 2.81 | - | | 0.19 | 1 |
| 266LA12 | 24 | 12V @ 2A | 6V @ 4A | V | 3.13 | 1.97 | 2.75 | 2.81 | - | | 0.19 | 1.6 |
| 266N12B | 48 | 12V @ 4A | 6V @ 8A | A | 4.03 | 2.21 | 2.62 | 3.56 | - | | 0.19 | 2.5 |
| 266PA12 | 72 | 12V @ 6A | 6V @ 12A | A | 4.03 | 2.50 | 2.63 | 3.56 | - | | 0.19 | 2.63 |
| 266F12 | 3.78 | 12.6V @ 0.3A | 6.3V @ 0.6A | A | 2.38 | 1.50 | 1.45 | 2.00 | - | | 0.19 | 0.4 |
| 266G12 | 6.3 | 12.6V @ 0.5A | 6.3V @ 1A | A | 2.81 | 1.60 | 1.68 | 2.38 | - | | 0.19 | 0.6 |
| 266J12 | 12.6 | 12.6V @ 1A | 6.3V @ 2A | A | 3.25 | 1.75 | 2.00 | 2.81 | - | | 0.19 | 1 |
| 266K12 | 18.9 | 12.6V @ 1.5A | 6.3V @ 3A | A | 3.25 | 2.06 | 2.00 | 2.81 | - | | 0.19 | 1.15 |
| 266L12B | 25.2 | 12.6V @ 2A | 6.3V @ 4A | V | 3.13 | 1.97 | 2.75 | 2.81 | - | | 0.19 | 1.6 |
| 266L12 | 31.5 | 12.6V @ 2.5A | 6.3V @ 5A | A | 3.69 | 2.20 | 2.31 | 3.13 | - | | 0.19 | 1 |
| 266M12 | 38 | 12.6V @ 3A | 6.3V @ 6A | A | 3.69 | 2.31 | 2.31 | 3.13 | - | | 0.19 | 1.6 |
| 266N12 | 50.4 | 12.6V @ 4A | 6.3V @ 8A | A | 4.00 | 2.40 | 2.62 | 3.56 | - | | 0.19 | 2.69 |
| 266G14 | 7 | 14V @ 0.5A | 7V @ 1A | A | 2.81 | 1.60 | 1.68 | 2.38 | - | | 0.19 | 0.6 |
| 266J14 | 14 | 14V @ 1A | 7V @ 2A | A | 3.25 | 2.06 | 2.00 | 2.81 | - | | 0.19 | 1.2 |
| 266L14 | 28 | 14V @ 2A | 7V @ 4A | A | 3.69 | 2.00 | 2.31 | 3.13 | - | | 0.19 | 1.63 |
| 266PA14 | 84 | 14V @ 6A | 7V @ 12A | B | 2.81 | 2.85 | 3.44 | 2.25 | 2.38 | 0.20 | 0.38 | 4 |
| 266G16 | 8 | 16V @ 0.5A | 8V @ 1A | A | 2.81 | 1.60 | 1.68 | 2.38 | - | | 0.19 | 0.78 |
| 266J16 | 16 | 16V @ 1A | 8V @ 2A | A | 3.25 | 1.90 | 2.00 | 2.81 | - | | 0.19 | 1.2 |
| 266L16 | 35.2 | 16V @ 2.2A | 8V @ 4.4A | A | 3.69 | 2.20 | 2.35 | 3.13 | - | | 0.19 | 1.9 |
| 266M16 | 48 | 16V @ 3A | 8V @ 6A | A | 4.00 | 2.30 | 2.62 | 3.56 | - | | 0.19 | 2.5 |
| 266K18 | 27 | 18V @ 1.5A | 9V @ 3A | A | 3.69 | 1.97 | 2.31 | 3.13 | - | | 0.19 | 1.58 |
| 266M18 | 54 | 18V @ 3A | 9V @ 6A | A | 4.03 | 2.50 | 2.63 | 3.56 | - | | 0.19 | 2.68 |
| 266P18 | 90 | 18V @ 5A | 9V @ 10A | B | 2.81 | 3.06 | 3.41 | 2.25 | 2.50 | 0.20 | 0.38 | 3.9 |
| 266F20 | 6 | 20V @ 0.3A | 10V @ 0.6A | A | 2.81 | 1.60 | 1.68 | 2.38 | - | | 0.19 | 0.6 |
| 266G20 | 10 | 20V @ 0.5A | 10V @ 1A | V | 2.88 | 1.90 | 2.37 | 2.38 | - | | 0.19 | 1 |
| 266L20 | 40 | 20V @ 2A | 10V @ 4A | A | 4.00 | 2.25 | 2.62 | 3.56 | - | | 0.19 | 2.63 |
| 266M20 | 60 | 20V @ 3A | 10V @ 6A | A | 4.03 | 2.50 | 2.63 | 3.26 | - | | 0.19 | 2.68 |
| 266C24 | 2 | 24V @ 0.085A | 12V @ 0.17A | A | 2.06 | 1.38 | 1.19 | 1.75 | - | | 0.19 | 0.28 |
| 266EA24 | 4.8 | 24V @ 0.2A | 12V @ 0.4A | A | 2.38 | 1.60 | 1.45 | 2.00 | - | | 0.19 | 0.45 |
| 266F24 | 7.2 | 24V @ 0.3A | 12V @ 0.6A | A | 2.81 | 1.60 | 1.68 | 2.38 | - | | 0.19 | 0.6 |
| 266FB24 | 9.6 | 24V @ 0.4A | 12V @ 0.8A | A | 2.82 | 1.69 | 1.69 | 2.38 | - | | 0.19 | 0.75 |
| 266G24 | 12 | 24V @ 0.5A | 12V @ 1A | V | 2.88 | 1.90 | 2.37 | 2.38 | - | | 0.19 | 1 |
| 266GD24 | 16.8 | 24V @ 0.7A | 12V @ 1.4A | A | 3.25 | 2.06 | 2.00 | 2.81 | - | | 0.19 | 1.15 |
| 266J24 | 24 | 24V @ 1A | 12V @ 2A | V | 3.13 | 2.00 | 2.75 | 2.81 | - | | 0.19 | 1.6 |
| 266J24B | 24 | 24V C.T. @ 1A | - | A | 3.25 | 2.00 | 2.00 | 2.81 | - | | 0.19 | 1.6 |
| 266L24 | 48 | 24V @ 2A | 12V @ 4A | V | 3.56 | 2.25 | 3.12 | 3.13 | - | | 0.19 | 2.25 |
| 266M24 | 72 | 24 V @ 3A | 12V @ 6A | A | 4.03 | 2.50 | 2.63 | 3.56 | - | | 0.19 | 2.68 |
| 266N24 | 96 | 24V @ 4A | 12V @ 8A | B | 2.81 | 3.06 | 3.38 | 2.25 | 2.50 | 0.20 | 0.38 | 4.4 |
| 266P24 | 120 | 24V @ 5A | 12V @ 10A | B | 3.13 | 2.86 | 3.81 | 2.50 | 2.50 | 0.20 | 0.38 | 5.2 |
| 266PA24 | 144 | 24V @ 6A | 12V @ 12A | B | 3.13 | 3.75 | 3.81 | 2.50 | 2.88 | 0.20 | 0.38 | 6 |
| 266R24 | 192 | 24V @ 8A | 12V @ 16A | B | 3.44 | 3.56 | 4.13 | 2.94 | 3.00 | 0.20 | 0.38 | 8.6 |
| 266S24 | 240 | 24V @ 10A | 12V @ 20A | B | 3.44 | 3.60 | 4.30 | 2.75 | 3.00 | 0.20 | 0.38 | 8.6 |
| 266J25 | 25.2 | 25.2V @ 1A | 12.6V @ 2A | A | 3.25 | 2.06 | 2.00 | 2.81 | - | | 0.19 | 1.25 |
| 266L25 | 50.4 | 25.2V @ 2A | 12.6V @ 4A | A | 4.00 | 2.25 | 2.62 | 3.56 | - | | 0.19 | 2.69 |
| 266LA25 | 50.4 | 25.2V C.T. @ 2A | - | A | 3.69 | 2.13 | 2.31 | 3.13 | - | | 0.19 | 2.69 |
| 266LH25 | 70.56 | 25.2V @ 2.8A | 12.6V @ 5.6A | A | 4.00 | 2.25 | 2.62 | 3.56 | - | | 0.19 | 2.63 |
| 266M25 | 75 | 25V @ 3A | 12.5V @ 6A | A | 4.50 | 2.50 | 2.90 | 4.00 | - | | 0.19 | 3.25 |
| 266J26 | 26.5 | 26.8V @ 1A | 13.4V @ 2A | A | 3.25 | 2.06 | 2.00 | 2.81 | - | | 0.19 | 1.3 |
| 266L28 | 56 | 28V @ 2A | 14V @ 4A | B | 2.50 | 2.50 | 3.06 | 2.00 | 2.25 | 0.20 | 0.38 | 2.75 |
| 266K35 | 52.5 | 35V @ 1.5A | 17.5V @ 3A | A | 4.00 | 2.25 | 2.62 | 3.56 | - | | 0.19 | 2.25 |
| 266G36 | 18 | 36V @ 0.5A | 18V @ 1A | A | 3.25 | 2.06 | 2.00 | 2.81 | - | | 0.19 | 1.07 |
| 266J36 | 36 | 36V @ 1A | 18V @ 2A | A | 3.69 | 1.97 | 2.31 | 3.13 | - | | 0.19 | 1.78 |

| Part No. | VA | Secondary VAC (R.M.S.) | | Mounting Style | Dimensions | | | | | Mounting Hole | | Weight (Lbs) |
|----------|-----|------------------------|------------|-------------------|------------|------|------|------|------|---------------|-------|-----------------|
| | | Series (C.T.) | Parallel | | A | B | C | D | E | Height | Width | |
| 266F48 | 12 | 48V @ 0.25A | 24V @ 0.5A | V | 2.88 | 1.75 | 2.37 | 2.38 | - | | 0.19 | 1 |
| 266G48 | 24 | 48V @ 0.5A | 24V @ 1A | V | 3.25 | 2.00 | 2.00 | 2.81 | - | | 0.19 | 1.5 |
| 266J48 | 48 | 48V @ 1A | 24V @ 2A | V | 3.56 | 2.20 | 3.12 | 3.13 | - | | 0.19 | 2.5 |
| 266L48 | 96 | 48V @ 2A | 24V @ 4A | B | 2.81 | 3.06 | 3.38 | 2.25 | 2.50 | 0.20 | 0.38 | 4.5 |
| 266M48 | 144 | 48V @ 3A | 24V @ 6A | B | 3.13 | 3.06 | 3.84 | 2.50 | 2.50 | 0.20 | 0.38 | 6 |
| 266N48 | 192 | 48V @ 4A | 24V @ 8A | B | 3.44 | 3.62 | 4.22 | 2.75 | 3.00 | 0.20 | 0.38 | 8 |

Data subject to change without notice

© 2019. Hammond Manufacturing Ltd. All rights reserved.

Mouser Electronics

Authorized Distributor

Click to View Pricing, Inventory, Delivery & Lifecycle Information:

Hammond:

[266C24](#) [266JB12](#) [266GD24](#) [266EA24](#) [266J48](#) [266G20](#) [266GB6](#) [266G24](#) [266G36](#) [266N12](#) [266N24](#) [266N48](#)
[266PA6](#) [266K12](#) [266K35](#) [266LH25](#) [266M48](#) [266J14](#) [266J12](#) [266J25](#) [266J16](#) [266J36](#) [266J24](#) [266J26](#) [266JB6](#)
[266FB24](#) [266PA14](#) [266M12](#) [266M16](#) [266GD12](#) [266L28](#) [266L24](#) [266L16](#) [266L48](#) [266L12](#) [266L20](#) [266L14](#)
[266F12](#) [266F6](#) [266M5](#) [266M6](#) [266PA24](#) [266S24](#) [266R24](#) [266G16](#) [266M18](#) [266P18](#) [266P24](#) [266G48](#) [266F20](#)
[266G9](#) [266K18](#) [266M2](#) [266M20](#) [266M24](#) [266E12](#) [266F12B](#) [266F12C](#) [266JA12](#) [266LA12](#) [266F48](#) [266J24B](#)
[266LA25](#) [266G12](#) [266L25](#) [266L6](#) [266S6](#) [266F24](#) [266V6B](#) [266PA12](#) [266N12B](#) [266L12B](#) [266M25](#) [266G14](#) [266J6](#)