

4

3

2

1

THIS DRAWING IS UNPUBLISHED.

RELEASED FOR PUBLICATION

© COPYRIGHT

ALL RIGHTS RESERVED.

LOC

DIST

REVISIONS

P	LTR	DESCRIPTION	DATE	DWN	APVD

D

C

B

A

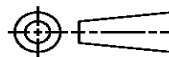
REPLACED BY OCEAN STYLE APPLICATOR PART NUMBER

FOR REPLACEMENT PARTS FOR APPLICATOR REFER TO ADDITIONAL PAGE(S). SPARE PARTS KIT (IF LISTED) WILL REMAIN AVAILABLE.

THE REPLACEMENT OCEAN STYLE APPLICATOR HAS THE SAME TERMINATOR/PRESS INTERFACE AS APPLICATOR

THIS DRAWING IS A CONTROLLED DOCUMENT.

DIMENSIONS:



TOLERANCES UNLESS OTHERWISE SPECIFIED:

0 PLC	±
1 PLC	±
2 PLC	±
3 PLC	±
4 PLC	±
ANGLES	±

MATERIAL

FINISH

DWN

CHK

APVD

PRODUCT SPEC

APPLICATION SPEC

WEIGHT

TE Connectivity

NAME

SIZE

CAGE CODE

DRAWING NO

RESTRICTED TO

A3

C-

SCALE

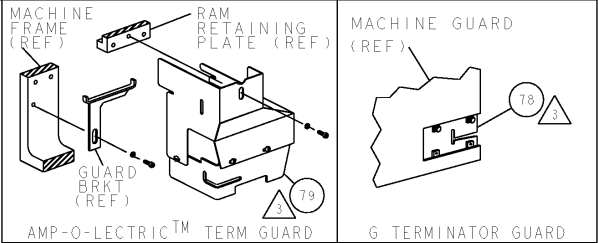
SHEET OF

REV

1470-19 (3/11)

Pro/ENGINEER DRAWING

8				7							
THIS DRAWING IS UNPUBLISHED				RELEASED FOR PUBLICATION				20			
(C) COPYRIGHT 20				BY TYCO ELECTRONICS CORPORATION. ALL RIGHTS RESERVED.							
PART NUMBER		REV	FIRST USED	POWER UNIT				FEED TYPE			
1855422-1		A	122500-1	LEADMAKER & BENCH MODEL G				POST FEED			
1855422-2		A	565435-5	BENCH MODEL K				POST FEED			
7-1855422-7		A	-	SPARE PARTS				-			

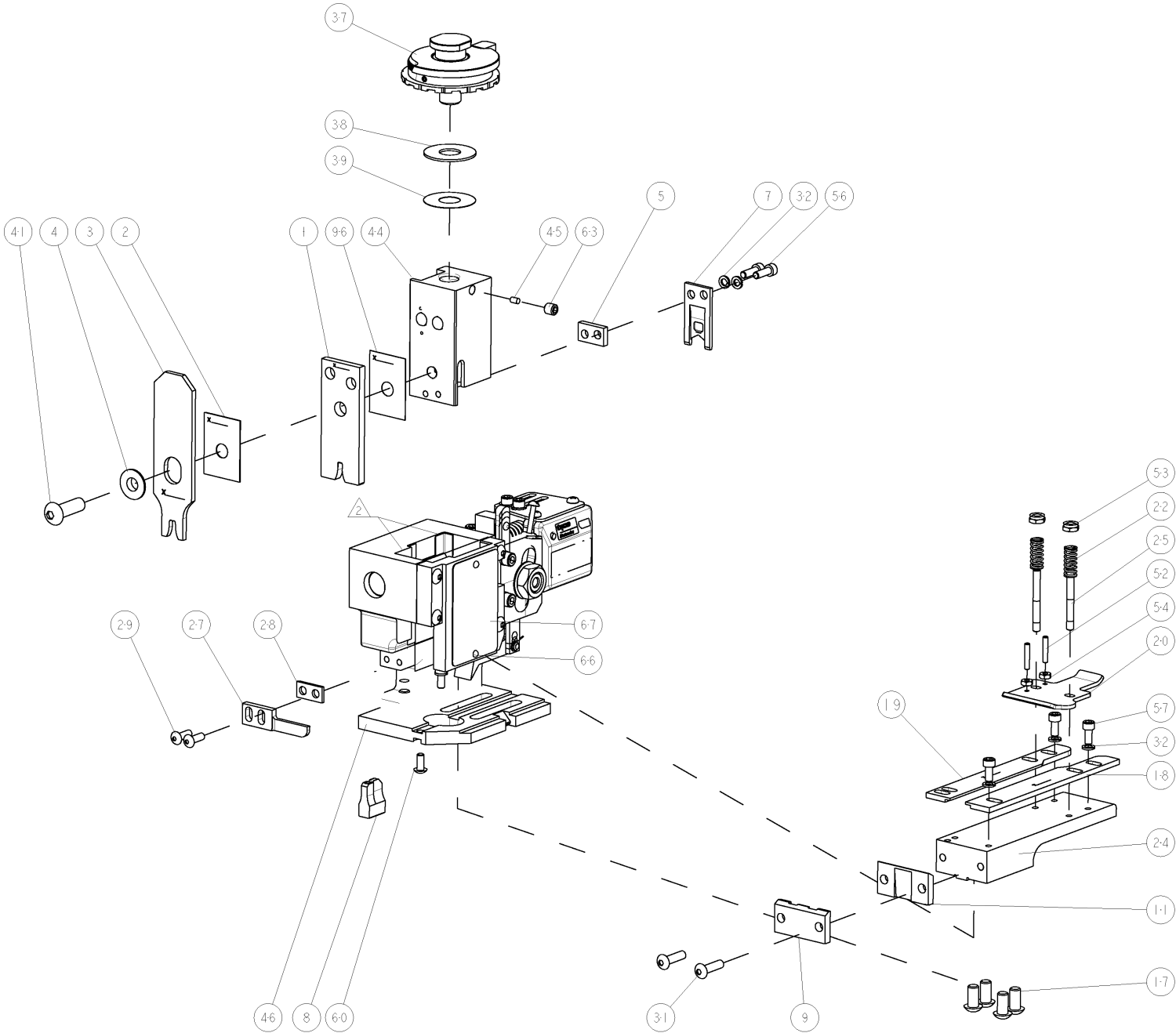


TERMINAL NAME: RING					
SOCKET	-	TE TERMINAL - TE CRIMP SPECS			REF SETTING*
63482	-				
-	-	CRIMP HEIGHT		WIRE SIZE	
-	-	2.31±0.05mm [.091±.002]		14AWG	A8
-	-	2.11±0.05mm [.083±.002]		16AWG	C4
-	-	1.98±0.05mm [.078±.002]		18AWG	D4
-	-			-	-
-	-	CRIMP	SIZE	TYPE	RANGE
-	-	WIRE	3.05mm [.120]	F	14-18 AWG
-	-	INSUL	4.57mm [.180]	F	0.105-0.145
WIRE STRIP LENGTH .207 - .222		TERM APPL SPEC 114-2084	FEED .826	APPL INSTRUCTIONS 408-8039	SET UP GAGE 458638-1

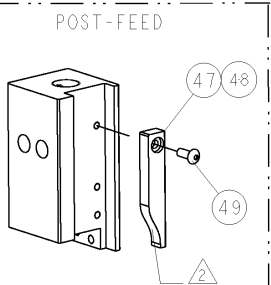
LOC	DIST	REVISEMENTS			
A	66	REV	DESCRIPTION	DATE	OWN
		1	DEVELOPMENT	19AUG2008	X.Z
		A	RELEASED	15SEP2008	MEH


- 1 RECOMMENDED SPARE PARTS  
2 GREASE LIGHTLY  
3 GUARD MUST BE IN PLACE WHEN OPERATING APPLICATOR IN A BENCH MACHINE

**\*WARNING:**  
ON INSTALLATION, SET WIRE DISC TO LARGEST WIRE SIZE SETTING. USE OF SETTINGS BELOW MIN REQUIRED CRIMP HEIGHT SETTING WILL CAUSE DAMAGE TO CRIMP TOOLING.



-	1	1	-	455888-1	SPACER, CRIMPER	96
-	REF	-	-	455745-1	GUARD WINDOW	79
-	-	REF	-	679532-1	INSERT, GUARD	78
-	1	1	-	217238-1	GENERAL INSTRUCTION PKG	72
-	1	1	-	4088039	EF APPL INST 408-8039	71
-	1	1	-	461264-5	PLATE, IDENTIFICATION	67
-	2	2	-	21017-2	SCREW, DRIVE	66
-	1	1	-	21009-2	SCR, SET, SELF LOCKING 1/4-20 X .250	63
-	1	1	-	22733-8	SCR, BHSC, SELF-LOCKING, 8-32 X .375	60
-	4	4	-	2-21000-6	SCR, SKT HD CAP 8-32 X .375	57
-	2	2	-	2-21000-7	SCR, SKT HD CAP 8-32 X .500	56
-	2	2	-	21018-4	NUT, HEX, REG 4-40	54
-	2	2	-	21022-2	NUT, LOCK, HEX, TORQUE, 8-32	53
-	2	2	-	2-21006-6	SCR, SET, CUP POINT 4-40 X .625	52
-	1	1	-	1-21002-7	SCR, BTN SKT CAP 6-32 X .375	49
-	1	-	-	690501-3	CAM, POST FEED, 1 1/8	48
-	-	1	-	690501-4	CAM, POST-FEED 1 5/8	47
-	1	1	-	458980-2	SUB ASSY, APPLICATOR FRAME	46
-	1	1	-	690191-1	PLUG, NYLON	45
-	1	1	-	1-455674-3	RAM	44
-	1	1	-	7-21002-9	SCR, BTN SKT HD CAP 5/16-24 X 1.00	41
-	1	1	-	690125-1	SHIM SUB-ASSY	39
-	1	1	-	1-469367-1	SHIM	38
-	1	1	-	879103-2	FINE ADJUST HEAD ASSEMBLY	37
-	6	6	-	21024-4	WASHER, SPRG LOCK, REG NO 8	32
-	2	2	-	2-21002-9	SCR, BTN SKT HD CAP 10-32 X .750	31
-	2	2	-	2-21002-2	SCR, BTN SKT HD CAP 8-32 X .500	29
-	1	1	-	3-690451-2	SPACER, STRIPPER	28
-	1	1	-	240639-1	STRIPPER (MACHINING)	27
-	2	2	-	22354-8	STUD, THREADED	25
-	1	1	-	455678-2	PLATE, STRIP GUIDE	24
-	2	2	-	4-22281-1	SPRING, DRAG	22
-	1	1	-	454177-1	DRAG	20
-	1	1	-	1-458030-5	STRIP GUIDE, REAR	19
-	1	1	-	1-458031-5	STRIP GUIDE, FRONT	18
-	4	4	-	3-21002-3	SCR, BTN SKT HD CAP 1/4-20 X .500	17
-	1	1	-	240833-7	PLATE, REAR SHEAR	11
-	-	-	-	-	-	10
-	1	1	-	1-690496-5	PLATE, FRONT SHEAR	9
-	1	1	-	463797-3	ANVIL	8
-	1	1	-	463788-1	SHEAR BLADE	7
-	-	-	-	-	-	6
-	1	1	-	2-240641-4	SPACER	5
-	1	1	-	238009-1	BLOCK, FL CRIMPER SPACER	4
-	1	1	-	3-1424909-0	CRIMPER, INSULATION F	3
-	1	1	-	455888-4	SPACER, CRIMPER	2
-	1	1	-	456423-5	CRIMPER, WIRE PREMIUM	1
-77	-2	-1	U/M	PART NO	DESCRIPTION	ITEM NO



THIS DRAWING IS THE PROPERTY OF TYCO ELECTRONICS CORPORATION IT IS TO BE USED FOR THE MANUFACTURE OF THE PART IDENTIFIED HEREON AND IS NOT TO BE REPRODUCED OR COPIED IN ANY MANNER WITHOUT THE WRITTEN CONSENT OF TYCO ELECTRONICS CORPORATION				DWN X.L. ZHAO 25AUG2008		Tyco Electronics Tyco Electronics Harrisburg, PA 17105-3608	
DIMENSIONS: INCHES		TOLERANCES UNLESS OTHERWISE SPECIFIED:		CNC M. HERR 25AUG2008		NAME	
		0 PLC ±.01 1 PLC ±.01 2 PLC ±.01 3 PLC ±.01 4 PLC ±.0001 ANGLES		PRODUCT SPEC APPLICATION SPEC		FINE ADJUST END FEED HDM APPLICATOR -	
MATERIAL		FINISH		WEIGHT		SIZE A	
-		-		-		CASE CODE 00779	
						DRAWING NO C=1855422	
						RESTRICTED TO -	
CUSTOMER DRAWING				SCALE 3:5		SHEET 1 OF 1 REV A	

# Mouser Electronics

Authorized Distributor

Click to View Pricing, Inventory, Delivery & Lifecycle Information:

[TE Connectivity:](#)

[1855422-2](#)