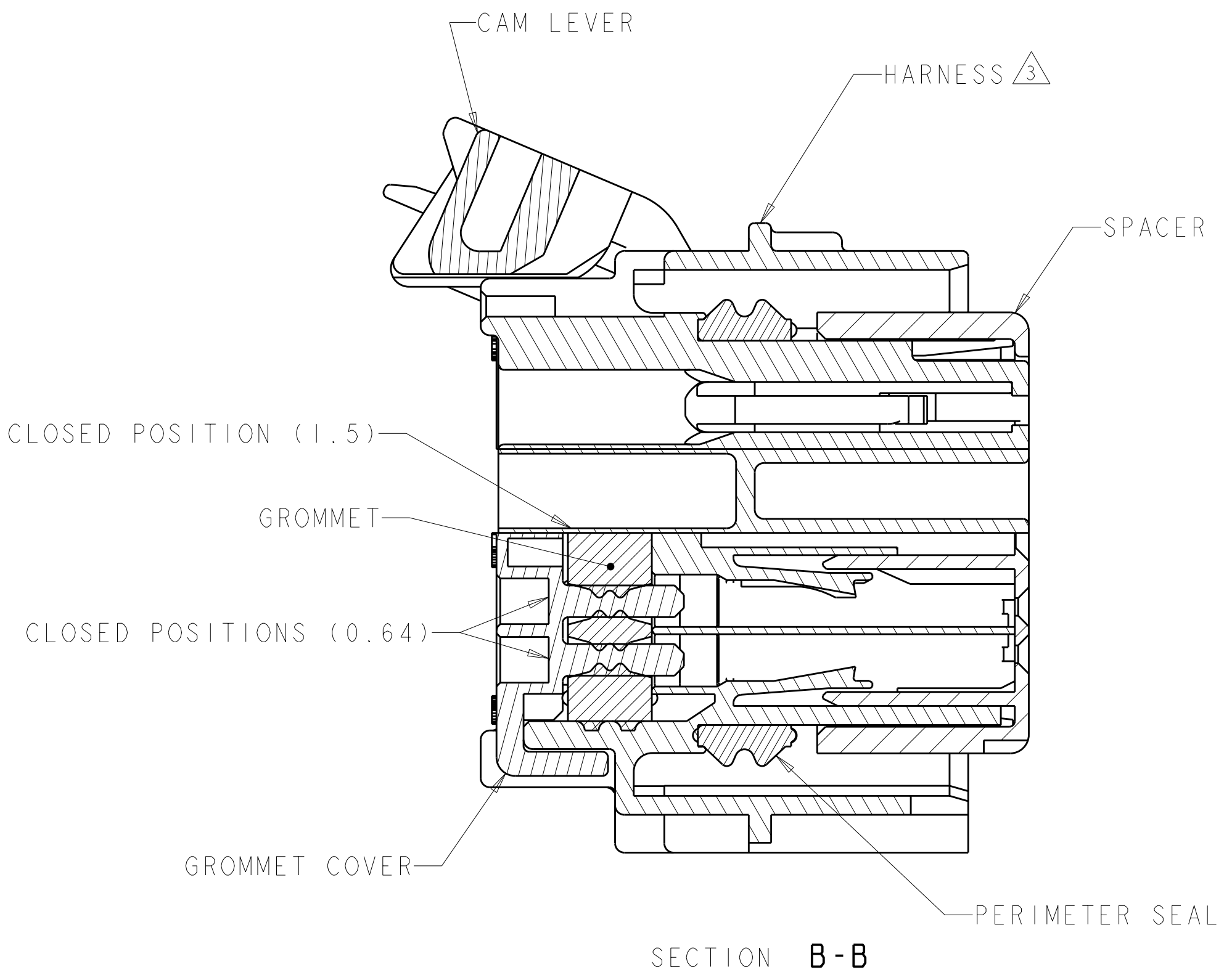
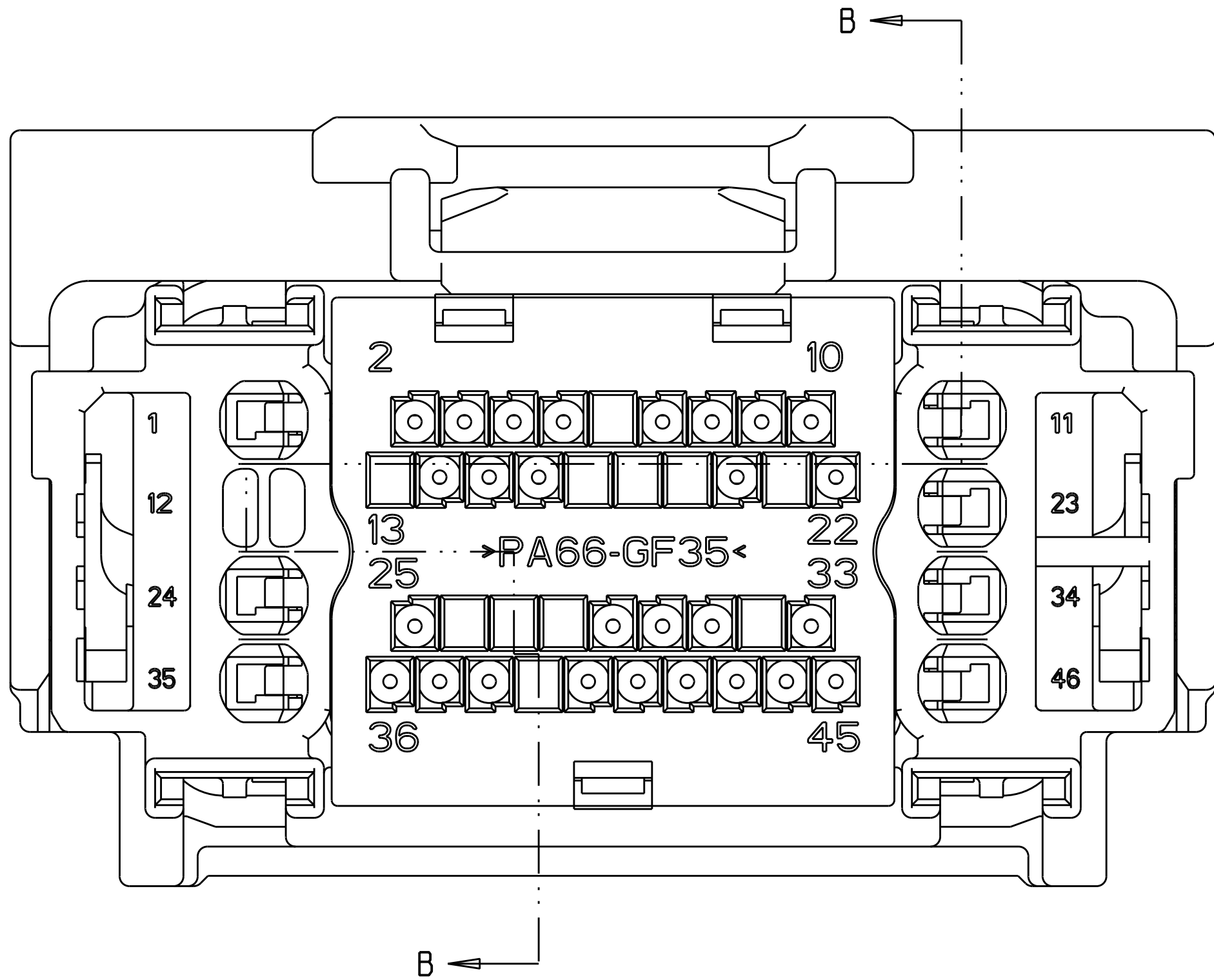
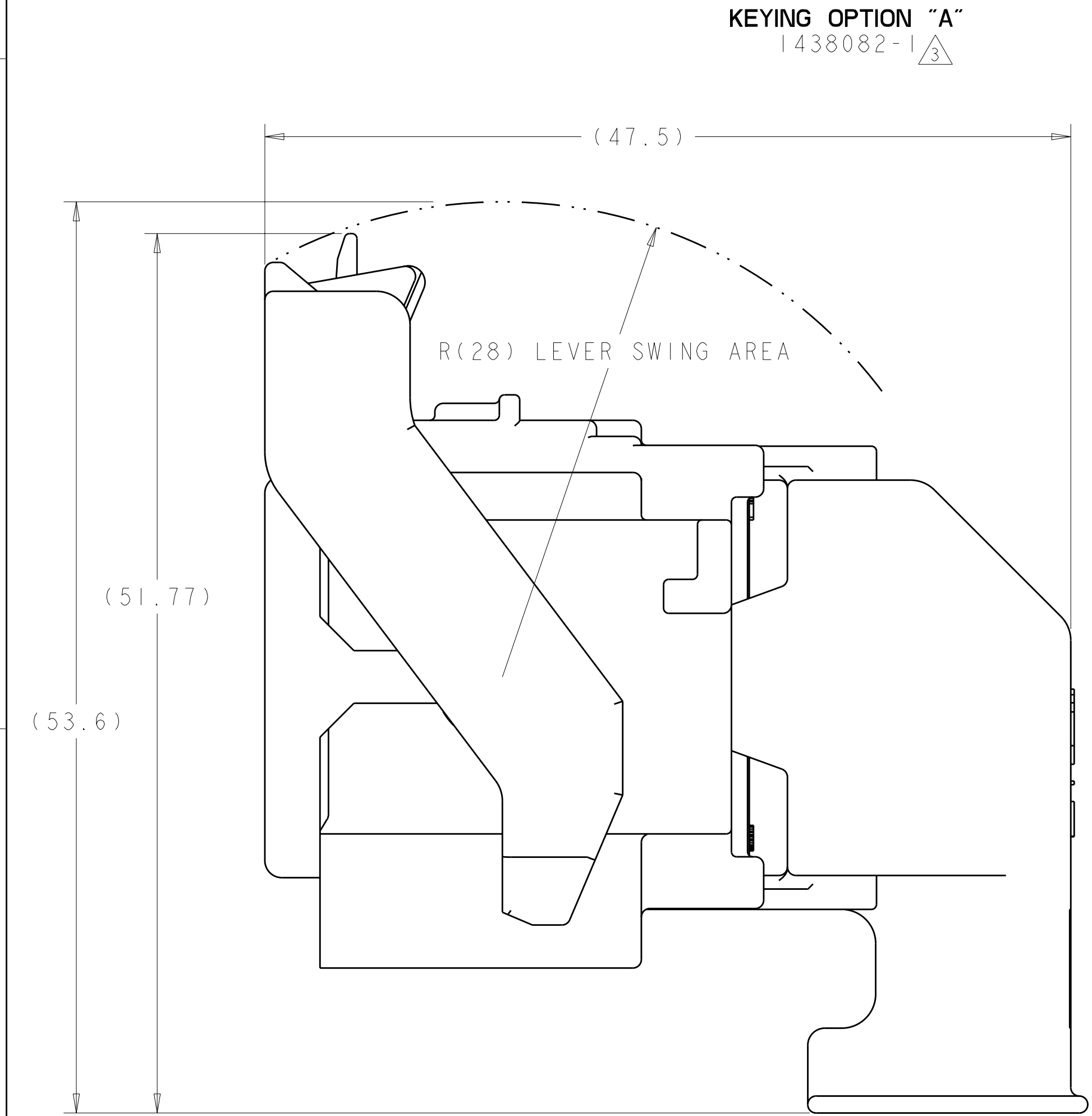


SCALE 1 : 1

KEYING OPTION "B"  
1438082-2  $\triangle_3$




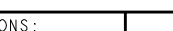
△ MATERIAL:  
HARNES - 35% GLASS FILLED PA66, BLACK  
ALT MAT'L: HARNES - 30% GLASS FILLED sPS, BLACK  
SPACER - 40% GLASS FILLED PPS+PA66, RED  
ALT MAT'L: 30% GLASS FILLED sPS, RED  
ALT MAT'L: 35% GLASS FILLED PA66, RED  
COVER - 35% GLASS FILLED PA66, BLACK  
ALT MAT'L: COVER - 30% GLASS FILLED LCP, BLACK  
CAM LEVER - 35% GLASS FILLED NYLON, GRAY  
GROMMET - SILICONE, BROWN  
PERIMETER SEAL - SILICONE, GREEN

2. CAM LEVER AND SPACER ARE SHIPPED IN PRE-LATCH POSITION.

③ SEE PINOUT CHART ON SHEETS 2, 3 AND 4 FOR CLOSED CIRCUIT CONFIGURATIONS.

④ CAVITIES WITH A NUMERIC SYMBOL INDICATES CLOSED TERMINAL LOCATIONS.  
BLANK CAVITIES INDICATE OPEN TERMINAL HOLE LOCATIONS.

SHOWN WITH CAM LEVER AND SPACER  
IN LOADED POSITION WITH  
OPTIONAL WIRESHIELD

<small>1. THIS DRAWING IS THE PROPERTY OF TYCO ELECTRONICS CORPORATION. IT IS TO BE USED FOR THE MANUFACTURE OF THE PARTS SPECIFIED HEREON. IT IS NOT TO BE REPRODUCED OR COPIED FOR ANY OTHER PURPOSE. IT IS TO BE KEPT IN THE COMPANY'S FILES FOR THE LIFE OF THE PARTS SPECIFIED HEREON.</small>		<small>DWG NO.</small> 01AUG2003 <small>CHKD BY</small> D. VESTAL <small>APP'D BY</small> D. STRAUSSER <small>DATE</small> 01AUG2003		 Tyco Electronics Harrisburg, PA 17105-3608	
<small>DIMENSIONS:</small> mm		<small>TOLERANCES UNLESS OTHERWISE SPECIFIED:</small> 0 PLOC ±.01 2 PLOC ±.03 3 PLOC ±.10 4 PLOC ±.10 ANGLES ±.5°		<small>NAME</small> 46 WAY PCM CONNECTOR HARNESS ASSEMBLY	
		<small>PRODUCT SPEC</small> <small>APPLICATION SPEC</small>		<small>SIZE</small> A   <small>CAGE CODE</small> 00779   <small>DRAWING NO.</small> C-1438082   <small>RESTRICTED TO</small>	
<small>MATERIAL</small> SEE TABLE		<small>FINISH</small> SEE TABLE		<small>WEIGHT</small> -   <small>CUSTOMER DRAWING</small>	
				<small>SCALE</small> 4:1   <small>SHEET</small> 1 OF 5   <small>REV</small>	



LOC	DIST	REVISIONS					
FX	00	P	LTR	DESCRIPTION	DATE	DWN	APVD
		-		SEE SHEET 1	-	-	-

		44								35		32							22								12		9	7	6				1	6-1438735-7	2LIT-14A464-SD-086															
		44								35		32															12		9	7	6				1	6-1438735-3	2LIT-14A464-SD-085															
										35																											6-1438735-2	2LIT-14A464-SD-084														
			43	42		40	39	37					29						20	18			15	14		11	10	9	8	7			4	3	1	6-1438735-1	2LIT-14A464-SD-083															
45	45	43						38	36			31					25	24					18	17	16	14	12				7	6		2	1	5-1438735-0	2LIT-14A464-SD-082															
45	45	43						38	36			31					25	24							16	14	12				7	6		2	1	4-1438735-9	2LIT-14A464-SD-081															
45	45	43						38	36			32	31				25	24		21	19	18	17	16	14	12				7	6			1	4-1438735-8	2LIT-14A464-SD-080																
45	45	43						39	38	37	36			31			25	24					18	17	16	14	13	12		9	7	6		2	1	4-1438735-7	2LIT-14A464-SD-079															
				42																20	18					13	11	10						2	1	3-1438735-8	2LIT-14A464-SD-078															
				42																20	18					13	11	10						1	3-1438735-7	2LIT-14A464-SD-077																
45	45	43						39	38	37	36			31			25	24		21	20	19	18	17		14	13	12		9				2	1	3-1438735-6	2LIT-14A464-SD-076															
45	45	43							38	36			31				25	24		21	20	19	18	17		14	12							2	1	3-1438735-5	2LIT-14A464-SD-075															
			43	42		40	39	37					29							20	18			15	14		11	10	9	8	7			4	3	2	1	3-1438735-3	2LIT-14A464-SD-074													
45	45	43						39	38	37	36			31			25	24			20	19	18	17		14	13	12		9				2	1	3-1438735-2	2LIT-14A464-SD-073															
45	45	43							38	36			31				25	24		21	20	19	18	17	16	14	12				7			2	1	3-1438735-1	2LIT-14A464-SD-072															
45	45	43						39	38	37	36			31			25	24		21	20	19	18	17	16	14	13	12		9	7			2	1	3-1438735-0	2LIT-14A464-SD-071															
45	45	43							38	36			31				25	24		21	20	19			16	14	12				7			2	1	2-1438735-9	2LIT-14A464-SD-070															
45	45	43						39	38	37	36			31			25	24		21	20	19			16	14	13	12		9	7			2	1	2-1438735-8	2LIT-14A464-SD-069															
45	45	43							38	36			31				25	24			20	19	18	17		14	12							2	1	2-1438735-6	2LIT-14A464-SD-068															
											33																13							6	5			2-1438735-5	2LIT-14A464-SD-067													
45	45	44	43	42		40		38	37	36		33	31				24	22	21	20		18	17	16	15				9	8				2	2-1438735-4	2LIT-14A464-SD-066																
			43										31		29							18								8					2	2-1438735-1	2LIT-14A464-SD-065															
45	45	43						38		36	35		31				25	24		21					16	14	12				7	6		2	1	2-1438735-0	2LIT-14A464-SD-064															
45	45	43						39	38	37	36	35		31			25	24					18	17	16	14	13	12		9	7	6		2	1	1-1438735-9	2LIT-14A464-SD-063															
45	45	43						38		36	35		32	31			25	24		21	19	18	17	16	14	12				7	6			1	1-1438735-8	2LIT-14A464-SD-062																
45	45	43						38		36	35		31				25	24							16	14	12				7	6		2	1	1-1438735-7	2LIT-14A464-SD-061															
45	45	43						38		36	35		31				25	24		21	19			16	14	12				7	6		2	1	1-1438735-6	2LIT-14A464-SD-060																
45	45	43						38		36	35		31				25	24					18	17	16	14	12			7	6		2	1	1-1438735-5	2LIT-14A464-SD-059																
45	45	43						39	38	37	36	35		31			25	24		21	19	18	17	16	14	13	12		9	7	6		2	1	1-1438735-4	2LIT-14A464-SD-058																
45	45	43						38		36	35		31				25	24		21	19	18	17	16	14	12				7	6		2	1	1-1438735-3	2LIT-14A464-SD-057																
				42					37											20	18			15	14		11	10	9	8	7		4	3	2	1	1-1438735-2	2LIT-14A464-SD-056														
45	45	43								36	35		31				24	21	19			16	14	12					7	6			1	1-1438735-1	2LIT-14A464-SD-055																	
									35							27																		3			1-1438735-0	2LIT-14A464-SD-054														
				43								31		29									18							9	8				2		1438735-9	2LIT-14A464-SD-053														
									35							27															7						1438735-8	2LIT-14A464-SD-052														
46	45	44	43	42	41	40	39	38	37	36	35	34	33	32	31	30	29	28	27	26	25	24	23	22	21	20	19	18	17	16	15	14	13	12	11	10	9	8	7	6	5	4	3	2	1		PART NUMBER	FORD PART NUMBER				
TERMINAL HOLE POSITION																																																				
PIN-OUT CHART KEYING OPTION "A"																																																				

THIS DRAWING IS UNPUBLISHED. RELEASED FOR PUBLICATION 20		DWN R. VESTAL 01AUG2003		Tyco Electronics Harrisburg, PA 17105-3608	
CHK D. STRAUSSER 01AUG2003		NAME		46 WAY PCM CONNECTOR HARNESS ASSEMBLY	
APVD D. STRAUSSER 01AUG2003		PRODUCT SPEC		SIZE CAGE CODE DRAWING NO RESTRICTED TO	
APPLICATION SPEC		WEIGHT		A 00779 C=1438082 -	
CUSTOMER DRAWING		SCALE 4:1		SHEET 3 OF 5 REV 1	

DIMENSIONS:

mm

TOLERANCES UNLESS OTHERWISE SPECIFIED:

9 PLC ±.3

1 PLC ±0.10

5 PLC ±

4 PLC ±

ANGLES ±°

FINISH -

MATERIAL -

-





# Mouser Electronics

Authorized Distributor

Click to View Pricing, Inventory, Delivery & Lifecycle Information:

[TE Connectivity:](#)

[5-1438082-2](#)